

Excellent Integrated System Limited

Stocking Distributor

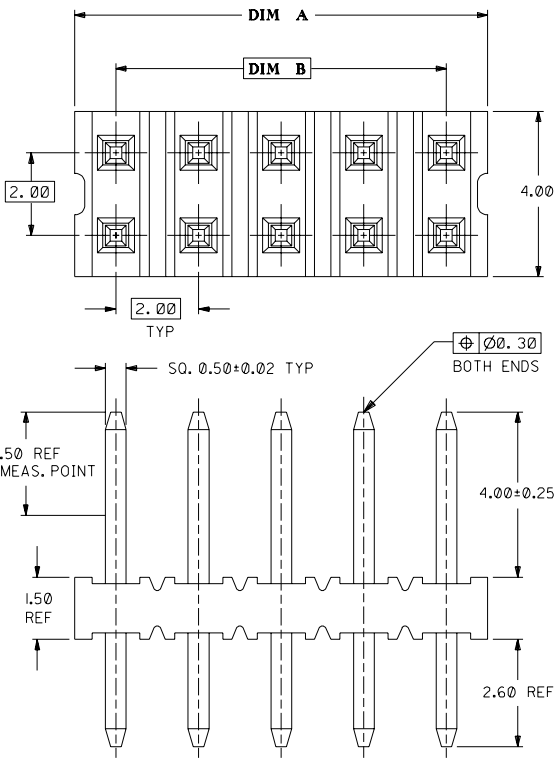
Click to view price, real time Inventory, Delivery & Lifecycle Information:

[Molex Connector Corporation](#)
[87089-4016](#)

For any questions, you can email us directly:

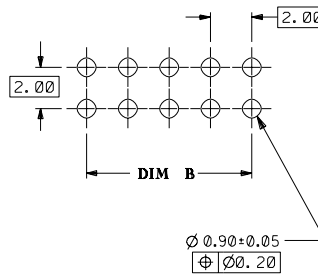
sales@integrated-circuit.com

DWG. NO. SD 87089-***16
CAD FILE S8708916.DGN



RECOMMENDED PCB PATTERN

(SCALE 5:1)



PART NO.	CKT SIZE	DIM A	DIM B
87089-02**	2	NA	NA
87089-04**	4	3.90	2.00
87089-06**	6	5.90	4.00
87089-08**	8	7.90	6.00
87089-10**	10	9.90	8.00
87089-12**	12	11.90	10.00
87089-14**	14	13.90	12.00
87089-16**	16	15.90	14.00
87089-18**	18	17.90	16.00
87089-20**	20	19.90	18.00
87089-22**	22	21.90	20.00
87089-24**	24	23.90	22.00
87089-26**	26	25.90	24.00
87089-28**	28	27.90	26.00
87089-30**	30	29.90	28.00
87089-32**	32	31.90	30.00
87089-34**	34	33.90	32.00
87089-36**	36	35.90	34.00
87089-38**	38	37.90	36.00
87089-40**	40	39.90	38.00
87089-42**	42	41.90	40.00
87089-44**	44	43.90	42.00
87089-46**	46	45.90	44.00
87089-48**	48	47.90	46.00
87089-50**	50	49.90	48.00

NOTES:

- 4 & 6 CKT SIZE ARE MADE BY BREAKING ASSEMBLY P/N 87089-08** AND P/N 87089-12** INTO HALVES RESPECTIVELY. BREAK-AWAY PROFILES ARE EXPECTED TO BE IRREGULAR.
- 2 CKT SIZE ARE MADE BY BREAKING LARGER ASSEMBLY P/N, THE CUT PROFILES ARE IRREGULAR AND UNDEFINED.
- 10 CIRCUIT SIZE SHOWN FOR ILLUSTRATION ONLY. SEE CHART FOR AVAILABLE PART SIZES.
- PLATING FINISH :
 - 16 - 0.38um/15uin MIN. GOLD SELECTIVE AREA 1.90um/75uin MIN. TIN/LEAD IN SELECTED AREA OVER 1.27um/50uin MIN. NICKEL OVERALL
 - 17 - 0.76um/30uin MIN. GOLD SELECTIVE AREA 1.90um/75uin MIN. TIN/LEAD IN SELECTED AREA OVER 1.27um/50uin MIN. NICKEL OVERALL
- PRODUCT SPECIFICATION PS-87049 APPLIES
- RECOMMENDED PC BOARD THICKNESS IS 1.60 ± 0.10mm.

mm

PART NUMBER LEGEND

87089 - * * * *
 CKT SIZE PLATING
 16 (SEE NOTE 4)
 17

SHT	1	2
REV	E3	E3

E3	ADD T/R OPT. ISHT 21 AS PER 97-01-0142 FOR MOLEX INC.	S70422	SEC	970224					
E2	ADD 2 CKT SIZE	S60168	SEC	950929					
E1	REVISED HOUSING MAT'L	S40030	SEC	930814					
LTR	REVISION RECORD	ECN	DR	CHK	DATE				

MATERIAL :
 HOUSING: 30% G.F. NYLON 46,
 94V-0 ,COLOR-BLACK
 PIN: 0.50mm SQ. PHOSPHOR
 BRONZE 5/0

FINISH :
 SEE NOTE 3

DRAWN BY SUSAN KOH 890801
 APPR'D BY R. WONG 890803

CHK'D BY J. KACHLIC 890802
 SCALE 10 : 1

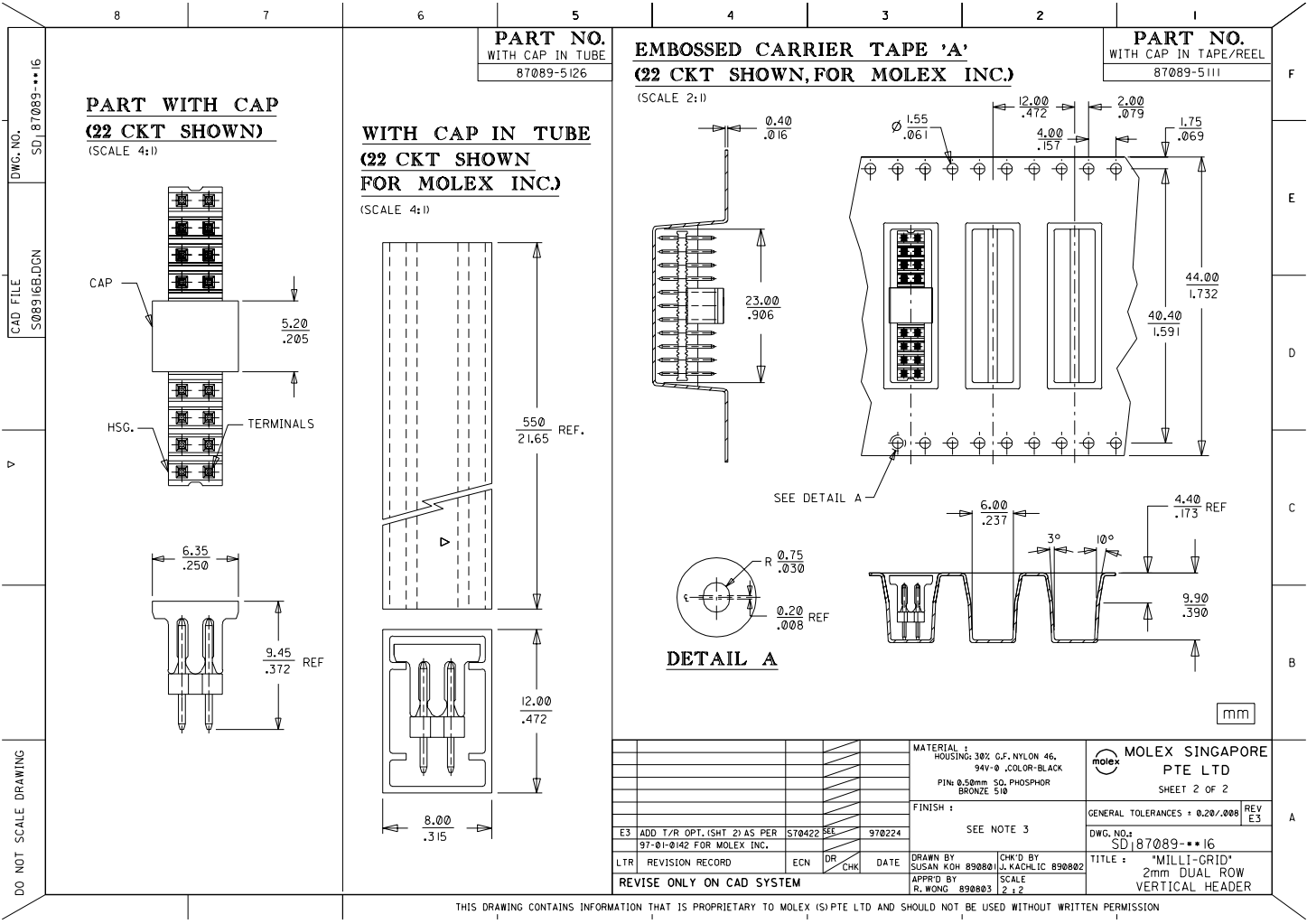
MOLEX SINGAPORE PTE LTD
 SHEET 1 OF 2

GENERAL TOLERANCES ± 0.20/0.08
 REV E3

DWG. NO. SD 87089-***16

TITLE : 'MILLI-GRID'
 2mm DUAL ROW
 VERTICAL HEADER

DO NOT SCALE DRAWING



THIS DRAWING CONTAINS INFORMATION THAT IS PROPRIETARY TO MOLEX (S) PTE LTD AND SHOULD NOT BE USED WITHOUT WRITTEN PERMISSION

DWG. NO. SD 87089-16
 CAD FILE S08916B.DGN
 DO NOT SCALE DRAWING