

Excellent Integrated System Limited

Stocking Distributor

Click to view price, real time Inventory, Delivery & Lifecycle Information:

[Embedded Artists](#)

[EA-EDU-011](#)

For any questions, you can email us directly:

sales@integrated-circuit.com



About Us

Products

Services

Support

Projects

Web Shop

Products

> Board Comparison Chart

» Developer's Kits

» OEM Boards

» QuickStart Boards

↓ Education Boards

> LPC2103 Edu board

> LPC2138 Edu board

> LPC2148 (v3) Edu board

> **Experiment board**

> LPC2148 (v2) Edu board

> Expansion - Ethernet

> Expansion - Prototype

> Expansion - MP3

> Expansion - UART

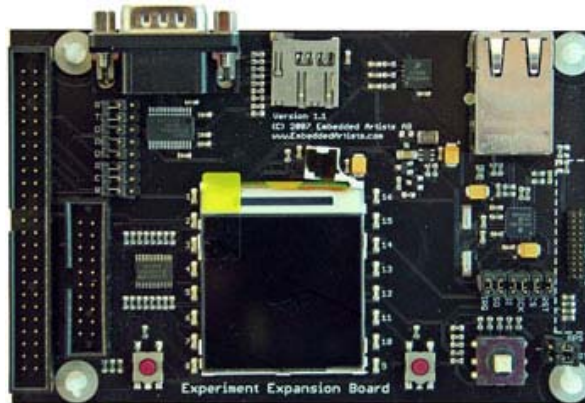
» LPCXpresso & mbed

» Displays

» Tools

» Accessories

Experiment Expansion Board



If you would like to have even more experiments added to your LPC2103, LPC2138 or LPC2148 Education Board the Embedded Artists' **Experiment Expansion Board** is the choice for you.

Price Information

Volume discount available for 25 boards, or more, see web shop

Art.no: **EA-EDU-011** **Buy**

Note that this product is NOT compatible with LPC2148 Education Board v2.

Overview **Specification** Related Products Resources FAQ

Experiment Expansion Board

<i>Expansion Interface</i>	<ul style="list-style-type: none"> LPC2103 Education Board - via the 20 pos expansion connector LPC2138 Education Board - via the 50 pos expansion connector LPC2148 Education Board - via the 50 pos expansion connector
<i>On-board Peripherals</i>	<ul style="list-style-type: none"> 128x128 color LCD (interface via SPI bus) with backlight control 3-axis accelerometer (MMA7260 from Freescale) 10M Ethernet interface (ENC28J60 from Microchip, interface via SPI bus) Joystick switch 2 push buttons 16 LEDs controlled via I2C (PCA9532) uSD/transflash connector (interface via SPI bus) Full-signal RS232 modem Interface to GPS module (A1035-C from Tyco Electronics). Note that GPS module is not included.
<i>Dimensions</i>	122 x 78 mm
<i>Power</i>	Powered with +3.3V from expansion connectors (either 20- or 50-pos connector). Needs at least 200 mA.
<i>Connectors</i>	<ul style="list-style-type: none"> 9-pos male DSUB (RS232 interface) RJ45 connector (Ethernet interface) uSD/transflash memory card connector interface to GPS module () 20 pin input expansion connector 50 pin input expansion connector
<i>Other</i>	<ul style="list-style-type: none"> Four layer PCB (FR-4 material) for best noise immunity

© Embedded Artists

Legal Information

Privacy Statement

The Art of Embedded Systems Development - made Easy™