



**Distributor of Molex Connector Corporation: Excellent Integrated System Limited**  
Datasheet of 5023861170 - Connector Receptacle 11 Position 0.049" (1.25mm) Tin Surface  
Mount, Right Angle

Contact us: [sales@integrated-circuit.com](mailto:sales@integrated-circuit.com) Website: [www.integrated-circuit.com](http://www.integrated-circuit.com)

---

## **Excellent Integrated System Limited**

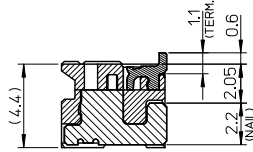
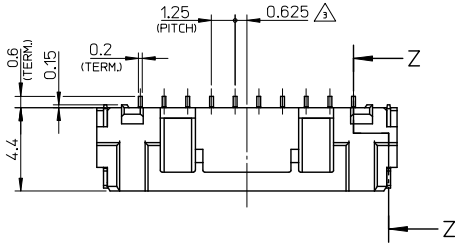
Stocking Distributor

Click to view price, real time Inventory, Delivery & Lifecycle Information:

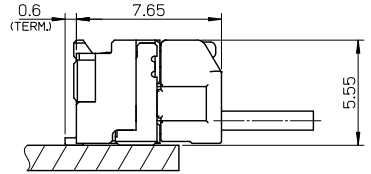
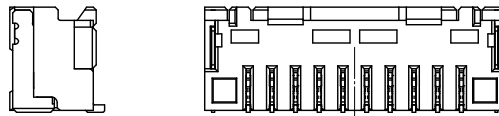
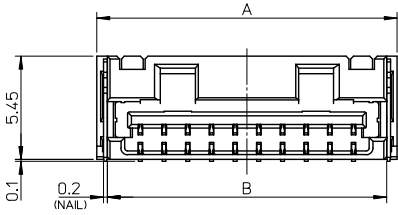
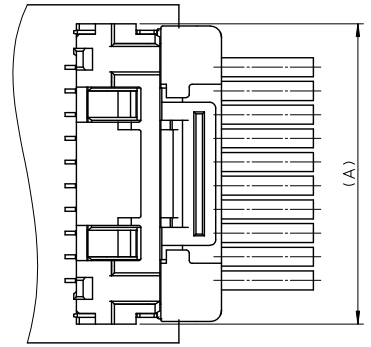
[Molex Connector Corporation](#)  
[5023861170](#)

For any questions, you can email us directly:  
[sales@integrated-circuit.com](mailto:sales@integrated-circuit.com)

Contact us: sales@integrated-circuit.com Website: www.integrated-circuit.com



SECTION Z-Z



嵌合部  
MATED CONNECTORS

NOTES

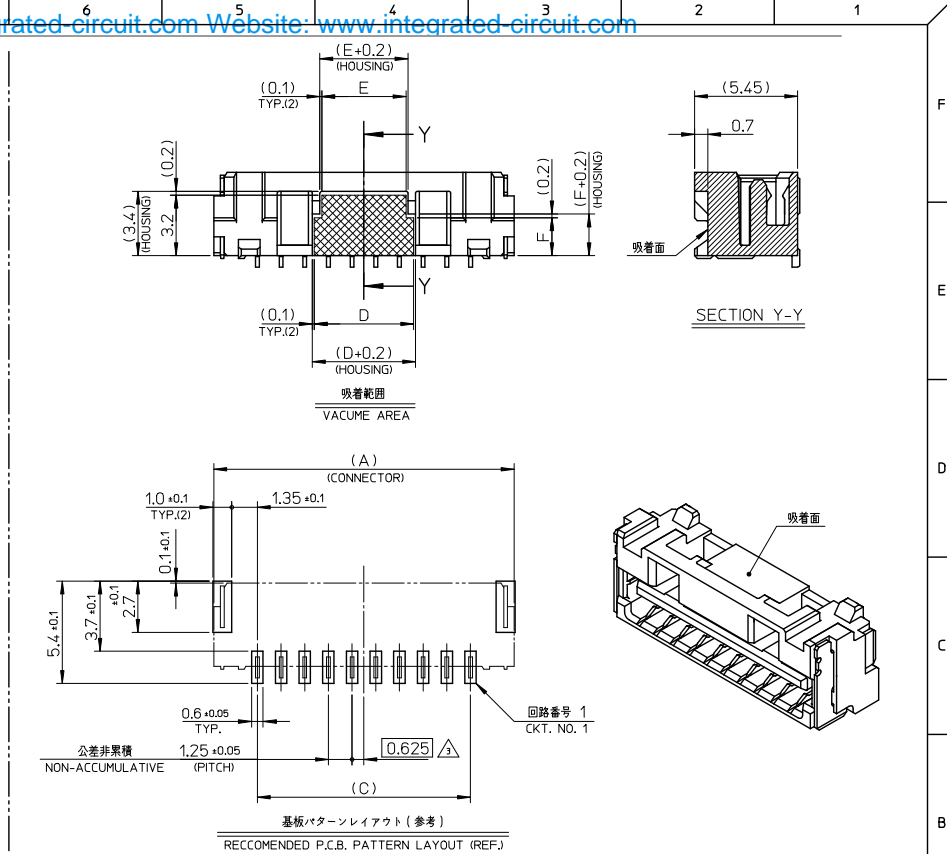
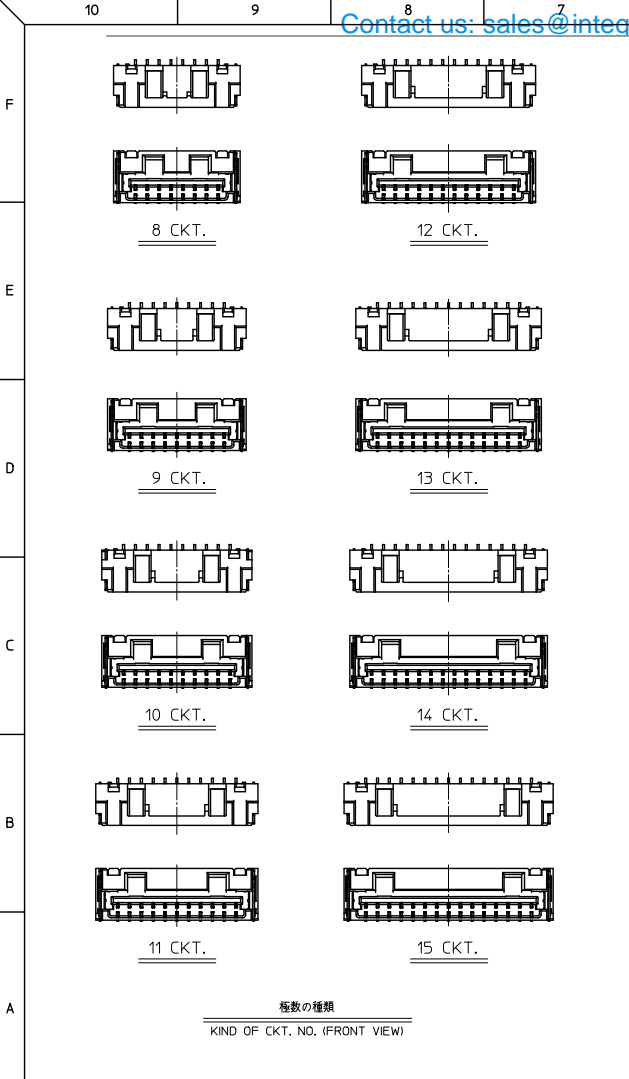
1. 嵌合相手: 502380-\*\*\*\*  
MATE WITH: 502380-\*\*\*\*
2. 端子テール部 及び ネイルの平坦度: 0.1MAX.  
TAIL AND NAIL COPLANARITY TO BE 0.1 MAX.
3. 極数/2=偶数に適用。  
APPLY FOR CKT. SIZE / 2 = EVEN.
4. 端子テール部 及び ネイルに錫めっきを使用しているため、  
外観に摺動痕が付く場合が御座います。  
THE WOUND OF FRICTION MIGHT ADHERE TO EXTERNALS  
BECAUSE THE TIN PLATING IS USED FOR THE TAIL AND NAIL.
5. 本製品のプラスチック部に黒点等が確認される場合や  
色合いが異なる場合がありますが、製品性能に影響はありません。  
THERE IS NO INFLUENCE IN THE PRODUCT PERFORMANCE THOUGH  
THE BLACK SPOT ETC. MIGHT BE CONFIRMED TO THE PLASTIC PART  
OF THIS PRODUCT AND THE SHADE MIGHT BE DIFFERENT.

2	10.7	11.5	17.5	21	22.1	502386-15**	15
2	9.45	10.25	16.25	19.75	20.85	502386-14**	14
2	8.2	9	15	18.5	19.6	502386-13**	13
2	6.95	7.75	13.75	17.25	18.35	502386-12**	12
2	5.7	6.5	12.5	16	17.1	502386-11**	11
2	4.45	5.25	11.25	14.75	15.85	502386-10**	10
2	3.2	4	10	13.5	14.6	502386-09**	9
2,6	1.95	2.75	8.75	12.25	13.35	502386-08**	8
F	E	D	C	B	A	EMBOSSED TAPE PACKAGE 極数 オーダー番号 ORDER No. (KT. NO.)	

番号 NO.	部品 PART	材質 MATERIAL
①	ハウジング HOUSING	耐熱性樹脂 UL94V-0 色: SHEET 3 参照 HEATPROOF RESIN UL94V-0 COLOR: SEE SHEET 3
②	ターミナル TERMINAL	銅合金 COPPER ALLOY 錫めっき: 1.0 micro-meter MIN. TIN (TAIL AREA) ニッケルめっき(下地): 1.0 micro-meter MIN. NICKEL (UNDER PLATING)
③	ネイル NAIL	銅合金 COPPER ALLOY 錫めっき: 1.0 micro-meter MIN. TIN ニッケルめっき(下地): 1.0 micro-meter MIN. NICKEL (UNDER PLATING)

REVISED DEC. NO. J2013-0870 DRAWN BY T.MIYAZAKI CHECKED BY K.ASAKAWA APPROVED BY Y.O.ITO	GENERAL TOLERANCES (UNLESS SPECIFIED)		DIMENSION STYLE MM ONLY		SCALE 5:1	DESIGN UNITS METRIC	THIRD ANGLE PROJECTION
	10 UNDER	± 0.2	DRAWN BY T.MIYAZAKI	DATE 2006/08/28	TITLE 1.25 W/B CONN. SINGLE R/A REC. ASS'Y 8-15CKT. -LEAD FREE-		
	10 OVER 30 UNDER	± 0.25	CHECKED BY K.ASAKAWA	DATE 2006/08/28			
	30 OVER	± 0.3	APPROVED BY Y.O.ITO	DATE 2006/08/28			
REV	ANGULAR ± 3 ° DRAFT WHERE APPLICABLE MUST REMAIN WITHIN DIMENSIONS		MATERIAL NO. SEE TABLE		DOCUMENT NO. SD-502386-002	SHEET NO. 1 OF 3	
SIZE A3 THIS DRAWING CONTAINS INFORMATION THAT IS PROPRIETARY TO MOLEX INCORPORATED AND SHOULD NOT BE USED WITHOUT WRITTEN PERMISSION							

Contact us: [sales@integrated-circuit.com](mailto:sales@integrated-circuit.com) Website: [www.integrated-circuit.com](http://www.integrated-circuit.com)



REVISED EC NO. J2013-0870 DRAWN: WASHIO CHKD: ASAKAWA APPR: ITO REV	GENERAL TOLERANCES (UNLESS SPECIFIED)		DIMENSION STYLE MM ONLY		SCALE 5:1	DESIGN UNITS METRIC	THIRD ANGLE PROJECTION
	10 UNDER	± 0.2	DRAWN BY T. MIYAZAKI	DATE 2006/08/28	TITLE 1.25 W/B CONN. SINGLE R/A REC. ASS'Y 8-15CKT. -LEAD FREE-		
	10 OVER 30 UNDER	± 0.25	CHECKED BY K. ASAKAWA	DATE 2006/08/28	MATERIAL NO. SEE TABLE		
	30 OVER	± 0.3	APPROVED BY YO. ITO	DATE 2006/08/28	DOCUMENT NO. SD-502386-002	SHEET NO. 2 OF 3	
ANGULAR ± 3 °		DRAFT WHERE APPLICABLE MUST REMAIN WITHIN DIMENSIONS		THIS DRAWING CONTAINS INFORMATION THAT IS PROPRIETARY TO MOLEX INCORPORATED AND SHOULD NOT BE USED WITHOUT WRITTEN PERMISSION			



**Distributor of Molex Connector Corporation: Excellent Integrated System Limited**  
 Datasheet of 5023861170 - Connector Receptacle 11 Position 0.049" (1.25mm) Tin Surface  
 Mount, Right Angle

Contact us: sales@integrated-circuit.com Website: www.integrated-circuit.com

HSG COLOR : ORANGE		
—//—	502386-**28	15
—//—		14
—//—		13
—//—		12
—//—		11
—//—		10
—//—		9
—//—		8
EMBOSSED TAPE PACKAGE オーダー番号ORDER No.	コネクタ シリズ CONNECTOR SERIES	極数 (XT. NO.)

HSG COLOR : GREEN		HSG COLOR : BLUE		HSG COLOR : YELLOW		HSG COLOR : RED		HSG COLOR : BLACK		HSG COLOR : NATURAL	
502386-1546	502386-**26	502386-1544	502386-**24	—//—	502386-**23	502386-1542	502386-**22	502386-1541	502386-**21	502386-1570	502386-**09
502386-1446		502386-1444		—//—		502386-1442		502386-1441		502386-1470	
502386-1346		502386-1344		—//—		502386-1342		502386-1341		502386-1370	
502386-1246		502386-1244		—//—		502386-1242		502386-1241		502386-1270	
502386-1146		502386-1144		—//—		502386-1142		502386-1141		502386-1170	
502386-1046		502386-1044		—//—		502386-1042		502386-1041		502386-1070	
502386-0946		502386-0944		—//—		502386-0942		502386-0941		502386-0970	
502386-0846		502386-0844		—//—		502386-0842		502386-0841		502386-0870	
EMBOSSED TAPE PACKAGE オーダー番号ORDER No.	コネクタ シリズ CONNECTOR SERIES	EMBOSSED TAPE PACKAGE オーダー番号ORDER No.	コネクタ シリズ CONNECTOR SERIES	EMBOSSED TAPE PACKAGE オーダー番号ORDER No.	コネクタ シリズ CONNECTOR SERIES	EMBOSSED TAPE PACKAGE オーダー番号ORDER No.	コネクタ シリズ CONNECTOR SERIES	EMBOSSED TAPE PACKAGE オーダー番号ORDER No.	コネクタ シリズ CONNECTOR SERIES	EMBOSSED TAPE PACKAGE オーダー番号ORDER No.	コネクタ シリズ CONNECTOR SERIES

REVISED IEC NO. J2013-0870 DRAWN BY CHIKIDAKAKAWA APPR. Y. ITO 2013/02/07 2013/02/13 2013/02/13 DESCRIPTION REV	GENERAL TOLERANCES (UNLESS SPECIFIED)		DIMENSION STYLE MM ONLY		SCALE -----	DESIGN UNITS METRIC	THIRD ANGLE PROJECTION
	10 UNDER	±0.2	DRAWN BY T. MIYAZAKI		DATE 2006/08/28	TITLE 1.25 W/B CONN. SINGLE R/A REC. ASS'Y 8-15CKT. -LEAD FREE-	
	10 OVER 30 UNDER	±0.25	CHECKED BY K. ASAKAWA		DATE 2006/08/28		
	30 OVER	±0.3	APPROVED BY Y. ITO		DATE 2006/08/28		
ANGULAR ±3 °		DRAFT WHERE APPLICABLE MUST REMAIN WITHIN DIMENSIONS		MATERIAL NO. SEE TABLE		DOCUMENT NO. SD-502386-002	SHEET NO. 3 OF 3
THIS DRAWING CONTAINS INFORMATION THAT IS PROPRIETARY TO MOLEX INCORPORATED AND SHOULD NOT BE USED WITHOUT WRITTEN PERMISSION							



Contact us: sales@integrated-circuit.com Website: www.integrated-circuit.com

WITHOUT CAPTON TAPE			WITH CAPTON TAPE										
HSG COLOR : ORANGE			HSG COLOR : GREEN		HSG COLOR : BLUE		HSG COLOR : RED		HSG COLOR : BLACK		HSG COLOR : NATURAL		
502386-**28	---	15	---	---	---	---	---	---	---	---	---	15	
	---	14	---	---	---	---	---	---	---	---	---	14	
	---	13	---	---	---	---	---	---	---	---	---	13	
	---	12	---	---	---	---	---	---	---	---	---	12	
	---	11	---	---	---	---	---	---	---	---	---	11	
	---	10	---	---	---	---	---	---	---	---	---	10	
	502386-0948	9	---	---	---	---	---	---	---	---	---	9	
	---	8	---	---	---	---	---	---	---	---	---	8	
	---	7	---	---	---	---	---	---	---	---	---	7	
	---	6	---	---	---	---	---	---	---	---	---	6	
---	5	---	---	---	---	---	---	---	---	---	5		
---	4	---	---	---	---	---	---	---	---	---	4		
---	3	---	---	---	---	---	---	---	---	---	3		
---	2	---	---	---	---	---	---	---	---	---	2		
コネクタ シリーズ CONNECTOR SERIES	製品番号 MATERIAL NO.	極数 (XT. NO.)	コネクタ シリーズ CONNECTOR SERIES	製品番号 MATERIAL NO.	コネクタ シリーズ CONNECTOR SERIES	製品番号 MATERIAL NO.	コネクタ シリーズ CONNECTOR SERIES	製品番号 MATERIAL NO.	コネクタ シリーズ CONNECTOR SERIES	製品番号 MATERIAL NO.	コネクタ シリーズ CONNECTOR SERIES	製品番号 MATERIAL NO.	極数 (XT. NO.)

WITHOUT CAPTON TAPE												
HSG COLOR : GREEN		HSG COLOR : BLUE		HSG COLOR : YELLOW		HSG COLOR : RED		HSG COLOR : BLACK		HSG COLOR : NATURAL		
502386-**26	502386-1546	502386-**24	502386-1544	502386-**23	---	502386-**22	502386-1542	502386-**21	502386-1541	502386-**09	502386-1570	
	502386-1446		502386-1444		---		502386-1442		502386-1441		502386-1470	
	502386-1346		502386-1344		---		502386-1342		502386-1341		502386-1370	
	502386-1246		502386-1244		---		502386-1242		502386-1241		502386-1270	
	502386-1146		502386-1144		---		502386-1142		502386-1141		502386-1170	
	502386-1046		502386-1044		---		502386-1042		502386-1041		502386-1070	
	502386-0946		502386-0944		502386-0943		502386-0942		502386-0941		502386-0970	
	502386-0846		502386-0844		---		502386-0842		502386-0841		502386-0870	
	502386-0746		502386-0744		---		502386-0742		502386-0741		502386-0770	
	502386-0646		502386-0644		---		502386-0642		502386-0641		502386-0670	
	502386-0546		502386-0544		---		502386-0542		502386-0541		502386-0570	
	502386-0446		502386-0444		---		502386-0442		502386-0441		502386-0470	
	502386-0346		502386-0344		---		502386-0342		502386-0341		502386-0370	
	502386-0246		502386-0244		---		502386-0242		502386-0241		502386-0270	
	コネクタ シリーズ CONNECTOR SERIES		製品番号 MATERIAL NO.		コネクタ シリーズ CONNECTOR SERIES		製品番号 MATERIAL NO.		コネクタ シリーズ CONNECTOR SERIES		製品番号 MATERIAL NO.	コネクタ シリーズ CONNECTOR SERIES

REVISED EC NO. J2013-0870 DRAWN BY T. MIYAZAKI 2013/02/07 CHECKED BY K. ASAKAWA 2013/02/13 APPROVED BY YO. ITO 2013/02/13	GENERAL TOLERANCES (UNLESS SPECIFIED)		DIMENSION STYLE MM ONLY		SCALE ---	DESIGN UNITS METRIC	THIRD ANGLE PROJECTION
	10 UNDER	± 0.2	DRAWN BY	DATE	TITLE		
	10 OVER 30 UNDER	± 0.25	T. MIYAZAKI	2006/10/16	1.25 W/B CONN. SINGLE R/A REC. EMBTP PKG		
	30 OVER	± 0.3	CHECKED BY	DATE			
	ANGULAR	± 3 °	K. ASAKAWA	2006/10/16			
DRAFT WHERE APPLICABLE MUST REMAIN WITHIN DIMENSIONS		SEE TABLE		MATERIAL NO.	DOCUMENT NO.	SHEET NO.	
		SIZE		THIS DRAWING CONTAINS INFORMATION THAT IS PROPRIETARY TO MOLEX INCORPORATED AND SHOULD NOT BE USED WITHOUT WRITTEN PERMISSION		2 OF 2	