



Distributor of Molex Connector Corporation: Excellent Integrated System Limited
Datasheet of 0391000807 - Connector Eurostyle Terminal Strip Strip 7 Circuit 0.315" (8.00mm)

Contact us: sales@integrated-circuit.com Website: www.integrated-circuit.com

Excellent Integrated System Limited

Stocking Distributor

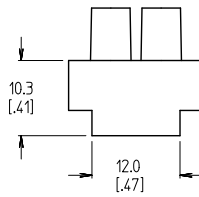
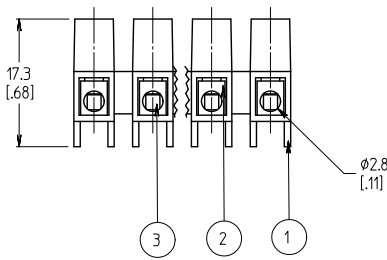
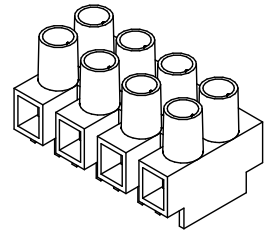
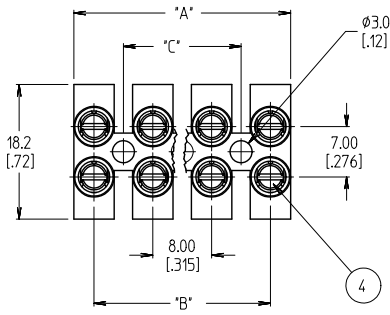
Click to view price, real time Inventory, Delivery & Lifecycle Information:

[Molex Connector Corporation](#)
[0391000807](#)

For any questions, you can email us directly:

sales@integrated-circuit.com

10 9 8 7 6 5 4 3 2 39100



NUMBER OF CIRCUITS	"A" DIM.	"B" DIM.	"C" DIM.	MATERIAL NUMBER
01	5.46 [215]	N/A	N/A	391000801
02	13.46 [530]	8.00 [315]	N/A	391000802
03	21.46 [845]	16.00 [630]	8.00 [315]	391000803
04	29.46 [1160]	24.00 [945]	16.00 [630]	391000804
05	37.47 [1475]	32.00 [1260]	24.00 [945]	391000805
06	45.47 [1790]	40.01 [1575]	32.00 [1260]	391000806
07	53.47 [2105]	48.01 [1890]	40.00 [1575]	391000807
08	61.47 [2420]	56.01 [2205]	48.00 [1890]	391000808
09	69.47 [2735]	64.01 [2520]	56.00 [2205]	391000809
10	77.47 [3050]	72.01 [2835]	64.00 [2520]	391000810
11	85.47 [3365]	80.01 [3150]	72.00 [2835]	391000811
12	93.47 [3680]	88.01 [3465]	80.00 [3150]	391000812

NOTES:

1. MATERIAL: SEE TABLE
2. FINISHES: SEE TABLE
3. 'XX' REFERS TO THE NUMBER OF CIRCUITS
4. ASSEMBLY IS ROHS COMPLIANT BY EXEMPTION. COMPONENTS MARKED WITH AN ASTERISK (*) ARE ROHS COMPLIANT BY EXEMPTION. ALL OTHERS ARE ROHS COMPLIANT.

ITEM	QTY.	DESCRIPTION	MATERIAL	FINISH
4	XX*2	CLAMPING SCREWS, M2.6 (B)	STEEL	ZINC
3	XX	WIRE PROTECTOR	BRASS	NICKEL
2	XX	TERMINAL (*)	BRASS	NICKEL
1	1	INSULATOR	NYLON 6	CLEAR

REVISED & REDRAWN EC NO: WNA2010-0649 2010/04/26 CLYORK 2010/04/26 CHKDOTIUS 2010/04/26 APPRODOTIUS 2010/04/26	QUALITY SYMBOLS ▽=0 ▽=0	GENERAL TOLERANCES (UNLESS SPECIFIED)		DIMENSION STYLE MM/IN		SCALE 2:1	DESIGN UNITS INCH	THIRD ANGLE PROJECTION	
		4 PLACES ± --- ± --- 3 PLACES ± --- ± .005 2 PLACES ± 0.13 ± .010 1 PLACE ± 0.3 ± ---	mm INCH	DRAWN BY CLYORK DATE 2010/04/26	TITLE 8MM PITCH HIGH PROFILE WITH WIRE PROTECTORS				
		ANGULAR ± 2°		CHECKED BY DTITUS DATE 2010/04/26	APPROVED BY DTITUS DATE 2010/04/27				
		DRAFT WHERE APPLICABLE MUST REMAIN WITHIN DIMENSIONS		MATERIAL NO. SEE CHART	MOLEX INCORPORATED		DOCUMENT NO. SD-39100-002	SHEET NO. 1 OF 1	

9 8 7 6 5 4 3 2 1