

## **Excellent Integrated System Limited**

Stocking Distributor

Click to view price, real time Inventory, Delivery & Lifecycle Information:

[Capital Advanced Technologies, Inc.](#)  
[33008](#)

For any questions, you can email us directly:

[sales@integrated-circuit.com](mailto:sales@integrated-circuit.com)

# SURFBOARDS®



THE BREADBOARDING MEDIUM FOR **SURFACE MOUNT™**

## 33000 SERIES APPLICATION SPECIFIC ADAPTERS

IDS33008  
REV 1-2012

# MODEL 33008

8 PIN .95 mm PITCH DEVICES

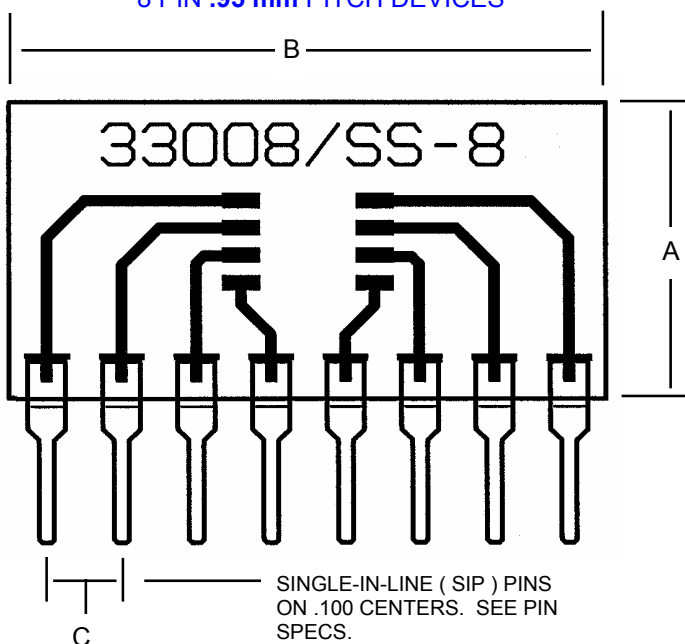


FIG.	INCHES	MM	NOTE:
A	.400	10.16	BOARD HEIGHT $\pm .5\text{mm}$ .020in.
B	.800	20.32	BOARD WIDTH $\pm .5\text{mm}$ .020in.
C	.100	2.54	SIP PIN SPACE $\pm .20\text{mm}$ .008in.
D	.180	4.57	PAD CENTERLINE
E	.0375	.95	DEVICE LEAD PITCH
F	.050	1.27	PAD LENGTH
G	.020	.508	PAD WIDTH
H	.130	3.30	GAP
I	.230	5.84	MAX PIN WIDTH

FOR FAIRCHILD SEMICONDUCTOR

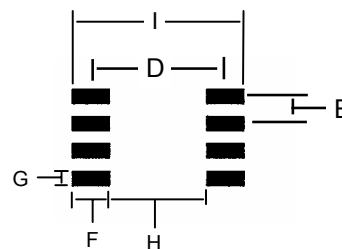
## SuperSOT™-8\*

\* A TRADEMARK OF FAIRCHILD SEMICONDUCTOR

### NATIONAL SEMI PKG CODE 34

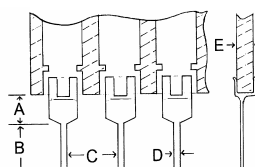
ALWAYS CONSULT DEVICE DATA SHEET TO INSURE PROPER FIT

PINS ON .100 CENTERS OFFER COMPATIBILITY WITH BREADBOARDS AND SOCKETS. USE FOR BREADBOARDING AND DEVICE EVALUATION.



DEVICE FOOTPRINT

### PIN SPECIFICATIONS / TOLERANCES



In Inches  
 A = .062  $\pm$  .006  
 B = .130  $\pm$  .010  
 C = .100  $\pm$  .005  
 D = .020  $\pm$  .004  
 E = .031  $\pm$  .005



### BOARD SPECIFICATIONS

**BOARD MATERIAL:** .8mm,  $\pm .13\text{mm}$  .031in  $\pm$  .005 in.

Thick G-10 FR-4 Glass Epoxy or equivalent.

**CIRCUITS:** 1 oz. Copper with RoHS compliant Lead Free solder coating. Patten Position on board  $\pm .5\text{mm}$  .020in.

**TOLERANCES:** If not noted are  $\pm 20\%$ . Nominal values are given. Controlling unit is Millimeters. Values rounded to nearest decimal. Slight Variations due to manufacturing process can occur.

Copyright 1997-2012 by Capital Advanced Technologies, Inc. All rights reserved. Surfboards is a registered trademark of Capital Advanced Technologies, Inc. The Breadboarding medium for surface mount, and the Leaf Circuit Logo are trademarks of Capital Advanced Technologies, Inc. All other trademarks are the property of their respective owners. Specifications, availability, and price is subject to change without notice. All information given is believed to be accurate but is not guaranteed. The user of information given or products represented by such information is responsible for determining the suitability of said information or products for a given purpose. No inducement is intended or permission granted for infringement of any patent or unauthorized use of any intellectual property of Capital Advanced Technologies or others.

## CAPITAL ADVANCED TECHNOLOGIES, INC.

CAROL STREAM, ILLINOIS . USA.

PHONE 630-690-1696

WWW.CapitalAdvanced.Com

FAX 630-690-2498