

Excellent Integrated System Limited

Stocking Distributor

Click to view price, real time Inventory, Delivery & Lifecycle Information:

[Capital Advanced Technologies, Inc.](#)
[33117](#)

For any questions, you can email us directly:

sales@integrated-circuit.com

SURFBOARDS®



THE BREADBOARDING MEDIUM FOR **SURFACE MOUNT**™

33000 SERIES APPLICATION SPECIFIC ADAPTERS

IDS33117
REV 1-2012

MODEL **33117**

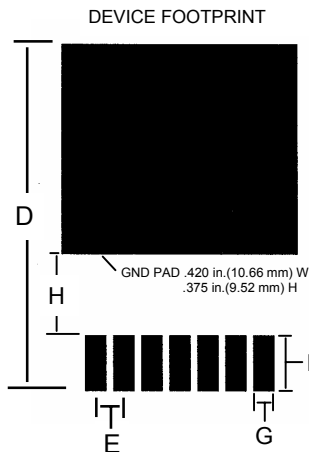
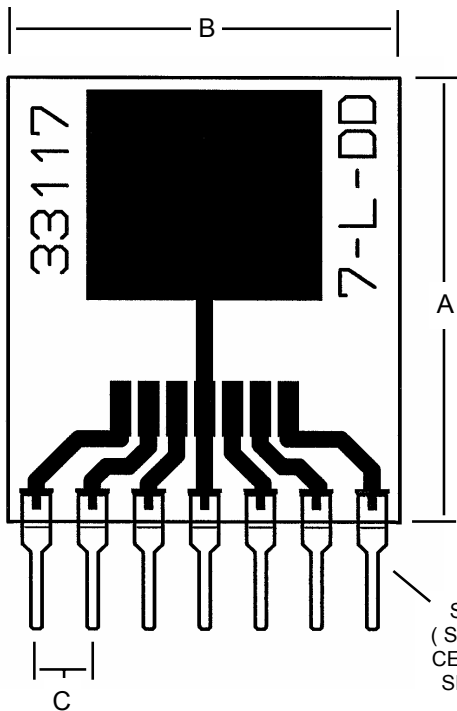
ACCEPTS
THESE
DEVICES



**TO-263 7 LEAD
7- LEAD DD PKG.
MICREL SPAK-07L
ON SEMI D2PAK 7 LEAD**

PARTIAL
LISTING

ALWAYS CONSULT DEVICE DATA SHEET TO INSURE PROPER FIT



PINS ON .1 in. CENTERS
PROVIDE COMPATIBILITY
WITH BREADBOARDS AND
SOCKETS.

USE FOR PROTOTYPING,
DEVICE EVALUATION OR
TEST, SMD TO THROUGH
HOLE CONVERSION.

**NOTE: CIRCUIT FOILS AND
OUTPUT PINS MAY NOT BE
SUITABLE FOR OPERATION
AT HIGHER RATED DEVICE
CURRENTS. EXTREME
TEMPERATURE RISE MAY
CAUSE FAILURE.**

SINGLE-IN-LINE
(SIP) PINS ON .1 in
CENTERS. SEE PIN
SPECIFICATIONS

PIN SPECIFICATIONS / TOLERANCES

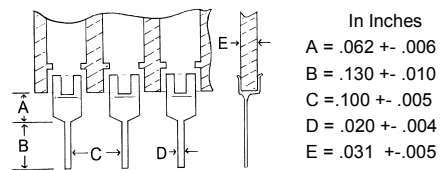


FIG.	INCHES	MM	NOTE:
A	.800	20.32	BOARD HEIGHT +/- .5mm .020in.
B	.700	17.78	BOARD WIDTH +/- .5mm .020in.
C	.100	2.54	SIP PIN SPACE +/- .20mm .008in.
D	.625	15.87	PAD (DEVICE) MAX
E	.050	1.27	DEVICE LEAD PITCH
F	.100	2.54	PAD LENGTH
G	.035	.889	PAD WIDTH
H	.150	3.81	GAP



BOARD SPECIFICATIONS

BOARD MATERIAL: .8mm, +/- .13mm .031in +/- .005 in.
Thick G-10 FR-4 Glass Epoxy or equivalent.
CIRCUITS: 1 oz. Copper with RoHS compliant Lead Free solder coating. Patten Position on board +/- .5mm .020in.

TOLERANCES: If not noted are +/- 20%. Nominal values are given.
Controlling unit is Millimeters. Values rounded to nearest decimal. Slight Variations due to manufacturing process can occur.

Copyright 1997-2012 by Capital Advanced Technologies, Inc. All rights reserved. Surfboards is a registered trademark of Capital Advanced Technologies, Inc. The Breadboarding medium for surface mount, and the Leaf Circuit Logo are trademarks of Capital Advanced Technologies, Inc. All other trademarks are the property of their respective owners. Specifications, availability, and price is subject to change without notice. All information given is believed to be accurate but is not guaranteed. The user of information given or products represented by such information is responsible for determining the suitability of said information or products for a given purpose. No inducement is intended or permission granted for infringement of any patent or unauthorized use of any intellectual property of Capital Advanced Technologies or others.

CAPITAL ADVANCED TECHNOLOGIES, INC.

CAROL STREAM, ILLINOIS. USA.

PHONE 630-690-1696

WWW.CapitalAdvanced.Com

FAX 630-690-2498