

Excellent Integrated System Limited

Stocking Distributor

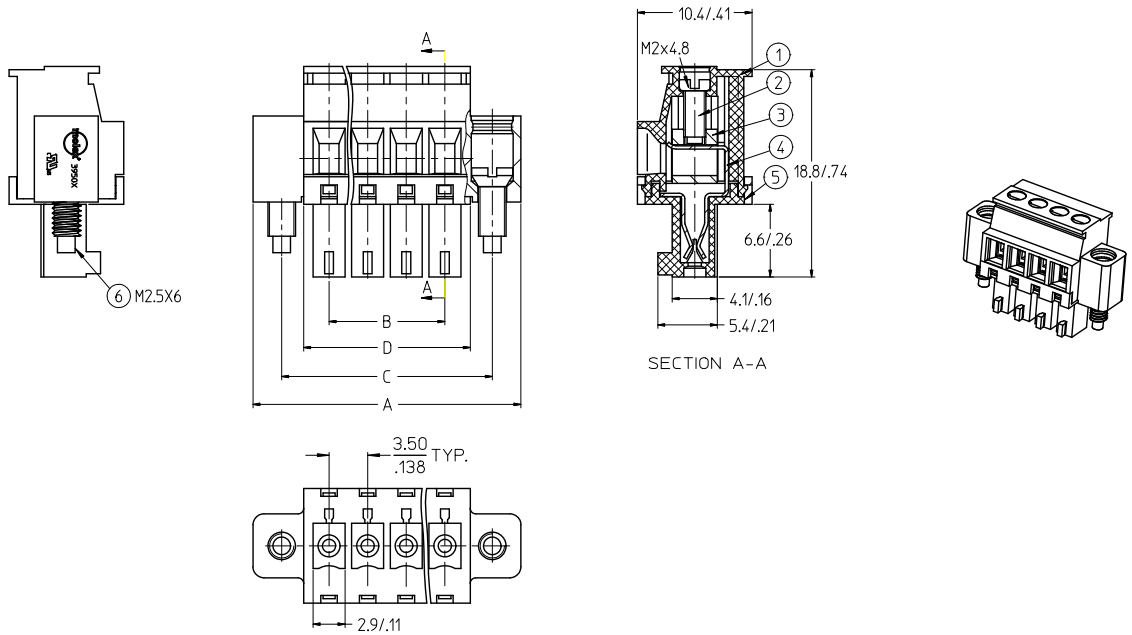
Click to view price, real time Inventory, Delivery & Lifecycle Information:

[Molex Connector Corporation](#)
[0395078013](#)

For any questions, you can email us directly:

sales@integrated-circuit.com

10 9 8 7 6 5 4 3 2 39507



SPECIFICATIONS:

1. MATERIAL:

(1). BODY: NYLON 66 (PA 66).

(2). SCREW: STEEL.

(3). CAGE (*): BRASS

(4). TERMINAL: PHOSPHOR BRONZE (C)

(5). COVER: NYLON 66 (PA 66).

(6). SCREW: STEEL

(C) 2. PRODUCT SPECIFICATION: PS-39500-001.

3. WIRE RANGE: 30 - 16AWG.

4. TORQUE: 2 in-lbs.

5. WIRE STRIP LENGTH: 6.50/.256.

6. NUMBER OF CIRCUIT POSITIONS AVAILABLE = 2 THROUGH 20.

(C) 7. ASSEMBLY IS ROHS COMPLIANT BY EXEMPTION.

COMPONENTS MARKED WITH AN ASTERISK (*) ARE ROHS COMPLIANT BY EXEMPTION, ALL OTHERS ARE ROHS COMPLIANT.

| | | | | | | | | | | | |
|-------------------------|------------|-----------------|-----|--|------|--------------------|------|---|--------------|--|--|
| FIX TYP-O-TERM MATERIAL | | QUALITY SYMBOLS | | GENERAL TOLERANCES (UNLESS SPECIFIED) | | DIMENSION STYLE | | SCALE | DESIGN UNITS | THIRD ANGLE PROJECTION | |
| EC NO: WNA 2010-0708 | 2010/06/29 | DESCRIPTION | REV | mm | INCH | MM/IN | DATE | 3:1 | INCH | 3.50MM, EURO PLUG, VERTICAL, FRONT WIRE ENTRY, MOUNTING ENDS | |
| DRWNL00000 | 2010/03/17 | | | DRAWN BY | DATE | TITLE | | | | | |
| CHYK0011111 | 2010/07/09 | | | CHECKED BY | DATE | | | | | | |
| CHYK0011111 | 2010/07/09 | | | APPROVED BY | DATE | | | | | | |
| CHYK0011111 | 2010/07/09 | | | APPROVED BY | DATE | | | | | | |
| | | | | 4 PLACES ± .005 ± .005 | | EHILE 2006/03/17 | | MOLEX INCORPORATED | | | |
| | | | | 3 PLACES ± .01 ± .01 | | EHILE 2006/03/17 | | | | | |
| | | | | 2 PLACES ± 0.13 ± .01 | | EHILE 2006/03/17 | | SD-39507-001 | | | |
| | | | | 1 PLACE ± 0.3 ± .01 | | RDEROSS 2006/03/17 | | | | | |
| | | | | ANGULAR ± 2 ° | | MATERIAL NO. | | DOCUMENT NO. | | SHEET NO. | |
| | | | | DRAFT WHERE APPLICABLE MUST REMAIN WITHIN DIMENSIONS | | SEE CHART | | SD-39507-001 | | 1 OF 2 | |
| | | | | | | SIZE B | | THIS DRAWING CONTAINS INFORMATION THAT IS PROPRIETARY TO MOLEX INCORPORATED AND SHOULD NOT BE USED WITHOUT WRITTEN PERMISSION | | | |
| | | | | | | | | | | | |

9 8 7 6 5 4 3 2 1

10 9 8 7 6 5 4 3 2 39507

| Circuit size | Material Numbers | | | | | | | | | | | | Dimensional Information | | | | | | | | | | | |
|--------------|------------------|-----------|-----------|------------------|-----------|-----------|------------------|-----------|-----------|------------------|-----------|-----------|-------------------------|------|------|------|------|------|------|------|--|--|--|--|
| | Black | | | | | | Green | | | | | | | | | | | | | | | | | |
| | 100% Tin | | | 30 u" Gold | | | 100% Tin | | | 30 u" Gold | | | | | | | | | | | | | | |
| | Printing Options | | | Printing Options | | | Printing Options | | | Printing Options | | | | | | | | | | | | | | |
| | None | 10AV | 11AV | None | 10AV | 11AV | None | 10AV | 11AV | None | 10AV | 11AV | mm | inch | mm | inch | mm | inch | mm | inch | | | | |
| 2 | 395073002 | 395073302 | 395073402 | 395073502 | 395073802 | 395073902 | 395078002 | 395078302 | 395078402 | 395078502 | 395078802 | 395078902 | 17.3 | .68 | 3.5 | .14 | 12.1 | .48 | 8.1 | .32 | | | | |
| 3 | 395073003 | 395073303 | 395073403 | 395073503 | 395073803 | 395073903 | 395078003 | 395078303 | 395078403 | 395078503 | 395078803 | 395078903 | 20.8 | .82 | 7.0 | .28 | 15.6 | .61 | 11.6 | .46 | | | | |
| 4 | 395073004 | 395073304 | 395073404 | 395073504 | 395073804 | 395073904 | 395078004 | 395078304 | 395078404 | 395078504 | 395078804 | 395078904 | 24.3 | .96 | 10.5 | .41 | 19.1 | .75 | 15.1 | .59 | | | | |
| 5 | 395073005 | 395073305 | 395073405 | 395073505 | 395073805 | 395073905 | 395078005 | 395078305 | 395078405 | 395078505 | 395078805 | 395078905 | 27.8 | 1.09 | 14.0 | .55 | 22.6 | .89 | 18.6 | .73 | | | | |
| 6 | 395073006 | 395073306 | 395073406 | 395073506 | 395073806 | 395073906 | 395078006 | 395078306 | 395078406 | 395078506 | 395078806 | 395078906 | 31.3 | 1.23 | 17.5 | .69 | 26.1 | 1.03 | 22.1 | .87 | | | | |
| 7 | 395073007 | 395073307 | 395073407 | 395073507 | 395073807 | 395073907 | 395078007 | 395078307 | 395078407 | 395078507 | 395078807 | 395078907 | 34.8 | 1.37 | 21.0 | .83 | 29.6 | 1.17 | 25.6 | 1.01 | | | | |
| 8 | 395073008 | 395073308 | 395073408 | 395073508 | 395073808 | 395073908 | 395078008 | 395078308 | 395078408 | 395078508 | 395078808 | 395078908 | 38.3 | 1.51 | 24.5 | .97 | 33.1 | 1.30 | 29.1 | 1.15 | | | | |
| 9 | 395073009 | 395073309 | 395073409 | 395073509 | 395073809 | 395073909 | 395078009 | 395078309 | 395078409 | 395078509 | 395078809 | 395078909 | 41.8 | 1.65 | 28.0 | 1.10 | 36.6 | 1.44 | 32.6 | 1.28 | | | | |
| 10 | 395073010 | 395073310 | 395073410 | 395073510 | 395073810 | 395073910 | 395078010 | 395078310 | 395078410 | 395078510 | 395078810 | 395078910 | 45.3 | 1.78 | 31.5 | 1.24 | 40.1 | 1.58 | 36.1 | 1.42 | | | | |
| 11 | 395073011 | 395073311 | 395073411 | 395073511 | 395073811 | 395073911 | 395078011 | 395078311 | 395078411 | 395078511 | 395078811 | 395078911 | 48.8 | 1.92 | 35.0 | 1.38 | 43.6 | 1.72 | 39.6 | 1.56 | | | | |
| 12 | 395073012 | 395073312 | 395073412 | 395073512 | 395073812 | 395073912 | 395078012 | 395078312 | 395078412 | 395078512 | 395078812 | 395078912 | 52.3 | 2.06 | 38.5 | 1.52 | 47.1 | 1.85 | 43.1 | 1.70 | | | | |
| 13 | 395073013 | 395073313 | 395073413 | 395073513 | 395073813 | 395073913 | 395078013 | 395078313 | 395078413 | 395078513 | 395078813 | 395078913 | 55.8 | 2.20 | 42.0 | 1.65 | 50.6 | 1.99 | 46.6 | 1.83 | | | | |
| 14 | 395073014 | 395073314 | 395073414 | 395073514 | 395073814 | 395073914 | 395078014 | 395078314 | 395078414 | 395078514 | 395078814 | 395078914 | 59.3 | 2.34 | 45.5 | 1.79 | 54.1 | 2.13 | 50.1 | 1.97 | | | | |
| 15 | 395073015 | 395073315 | 395073415 | 395073515 | 395073815 | 395073915 | 395078015 | 395078315 | 395078415 | 395078515 | 395078815 | 395078915 | 62.8 | 2.47 | 49.0 | 1.93 | 57.6 | 2.27 | 53.6 | 2.11 | | | | |
| 16 | 395073016 | 395073316 | 395073416 | 395073516 | 395073816 | 395073916 | 395078016 | 395078316 | 395078416 | 395078516 | 395078816 | 395078916 | 66.3 | 2.61 | 52.5 | 2.07 | 61.1 | 2.41 | 57.1 | 2.25 | | | | |
| 17 | 395073017 | 395073317 | 395073417 | 395073517 | 395073817 | 395073917 | 395078017 | 395078317 | 395078417 | 395078517 | 395078817 | 395078917 | 69.8 | 2.75 | 56.0 | 2.21 | 64.6 | 2.54 | 60.6 | 2.39 | | | | |
| 18 | 395073018 | 395073318 | 395073418 | 395073518 | 395073818 | 395073918 | 395078018 | 395078318 | 395078418 | 395078518 | 395078818 | 395078918 | 73.3 | 2.89 | 59.5 | 2.34 | 68.1 | 2.68 | 64.1 | 2.52 | | | | |
| 19 | 395073019 | 395073319 | 395073419 | 395073519 | 395073819 | 395073919 | 395078019 | 395078319 | 395078419 | 395078519 | 395078819 | 395078919 | 76.8 | 3.02 | 63.0 | 2.48 | 71.6 | 2.82 | 67.6 | 2.66 | | | | |
| 20 | 395073020 | 395073320 | 395073420 | 395073520 | 395073820 | 395073920 | 395078020 | 395078320 | 395078420 | 395078520 | 395078820 | 395078920 | 80.3 | 3.16 | 66.5 | 2.62 | 75.1 | 2.96 | 71.1 | 2.80 | | | | |

| | | | | | | | | | | | | |
|---|---------------------------|--|---------------------------------------|--------|-----------------|---|--------------|--|------------------------|--|-----------|--|
| SEE SHEET ONE EC NO: WNA2010-0708 C DRWNL YORK CHKDDITUS APPROBITUS | DESCRIPTION ▽=0 ▽=0 | QUALITY SYMBOLS | GENERAL TOLERANCES (UNLESS SPECIFIED) | | DIMENSION STYLE | | SCALE | DESIGN UNITS | THIRD ANGLE PROJECTION | | | |
| | | | | | MM/IN | | 3:1 | INCH | | | | |
| | | | | | DRAWN BY | | DATE | TITLE | | | | |
| | | | 4 PLACES ± --- ± --- | | EHILE | | 2006/03/17 | 3.50MM, EURO PLUG, VERTICAL, FRONT WIRE ENTRY, MOUNTING ENDS | | | | |
| | | | 3 PLACES ± --- ± .005 | | CHECKED BY | | DATE | | | | | |
| | | | 2 PLACES ± 0.13 ± .01 | | EHILE | | 2006/03/17 | | | | | |
| | | | 1 PLACE ± 0.3 ± .01 | | APPROVED BY | | DATE | | | | | |
| | | | ANGULAR ± 2 ° | | RDEROSS | | 2006/03/17 | MOLEX INCORPORATED | | | | |
| | | | | | MATERIAL NO. | | DOCUMENT NO. | | | | SHEET NO. | |
| | | | | | SEE CHART | | SD-39507-001 | | | | 2 OF 2 | |
| | | DRAFT WHERE APPLICABLE MUST REMAIN WITHIN DIMENSIONS | | SIZE B | | THIS DRAWING CONTAINS INFORMATION THAT IS PROPRIETARY TO MOLEX INCORPORATED AND SHOULD NOT BE USED WITHOUT WRITTEN PERMISSION | | | | | | |

9 8 7 6 5 4 3 2 1