

## Excellent Integrated System Limited

Stocking Distributor

Click to view price, real time Inventory, Delivery & Lifecycle Information:

[Honeywell Sensing and Productivity Solutions](#)  
[10BS210](#)

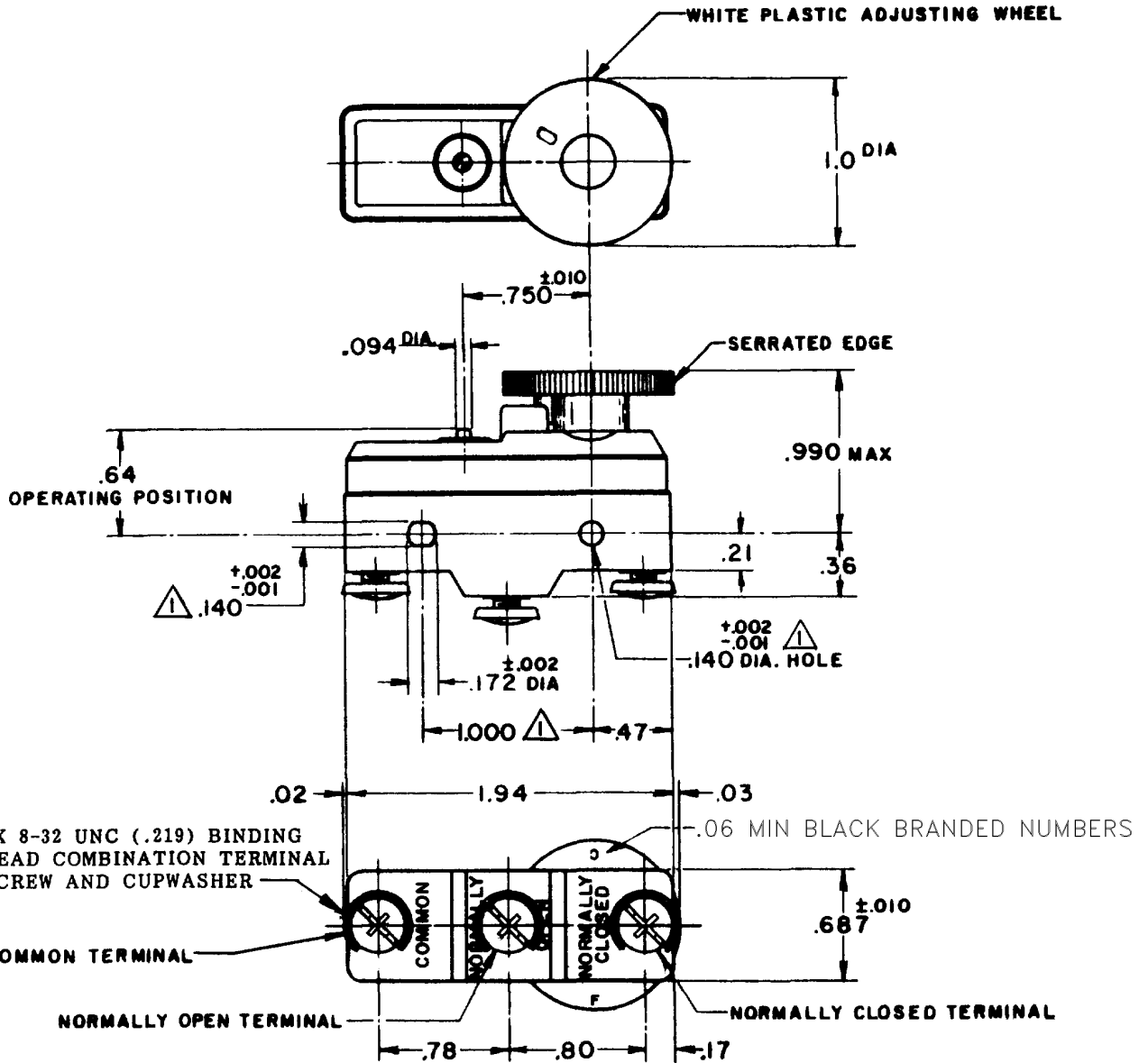
For any questions, you can email us directly:

[sales@integrated-circuit.com](mailto:sales@integrated-circuit.com)

**MICRO SWITCH**  
 A DIVISION OF MINNEAPOLIS-HONEYWELL REGULATOR COMPANY  
 MINNEAPOLIS, MINN.  
 FED. MFR. CODE 91929

**SWITCH-BASIC**

CATALOG LISTING  
**10BS210**



NOTE:  
 1- MOUNTING HOLES WILL ACCEPT PINS OR SCREWS OF .139 MAX. DIA. ON 1.000 $\pm .002$  CENTERS,  
 2- DIAL WHEEL IS SHOWN AT THE MAX SETTING OF BREAK DISTANCE.  
 3- DIAL WHEEL ROTATION 300°

THIS DRAWING COVERS A PROPRIETARY ITEM AND IS THE PROPERTY OF MICRO SWITCH, A DIVISION OF MINNEAPOLIS-HONEYWELL REGULATOR CO. THIS DRAWING IS NOT TO BE COPIED OR USED WITHOUT THE APPROVAL OF MICRO SWITCH.

**CHARACTERISTICS (AT MIN SETTING)**

AT MIN SETTING  
 OPERATING FORCE ----- 11-20 OZ  
 RELEASE FORCE ----- 10 OZ MIN  
 DIFFERENTIAL TRAVEL ----- .0015-.0025

AT MAX SETTING  
 DIFFERENTIAL TRAVEL ----- .007 MIN  
 OVERTRAVEL ----- .010 MIN

**ELECTRICAL DATA**

CONTACT ARRANGEMENT  
 S P D T

L17

20A 125, 250 OR 480 VAC  
 3/4 HP 125 VAC, 1 1/2 HP 250 VAC



SCALE FULL

DO NOT SCALE PRINT

UNLESS OTHERWISE SPECIFIED  
 DIMENSIONS ARE IN INCHES

**TOLERANCES ARE:**

ONE PLACE (.0)  $\pm .005$   
 TWO PLACE (.00)  $\pm .015$   
 THREE PLACE (.000)  $\pm .005$   
 ANGLES  $\pm 10^\circ$

WEIGHT

10BS210

M

DRAWING NUMBER

ISSUE

9

REVISIONS

A C080053  
 JALA  
 5 APR 95

REPLACES

RELEASE NO. SR 9212

CHECK

CHECK

31 AUG 60  
 GCH  
 31 AUG 60

31 AUG 60  
 MBF

FORMTEK  
 DRAWN