

Excellent Integrated System Limited

Stocking Distributor

Click to view price, real time Inventory, Delivery & Lifecycle Information:

[Honeywell Sensing and Productivity Solutions
7VP34](#)

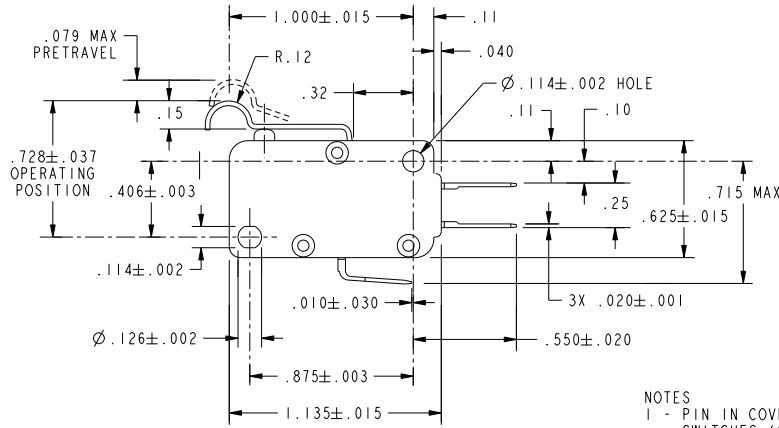
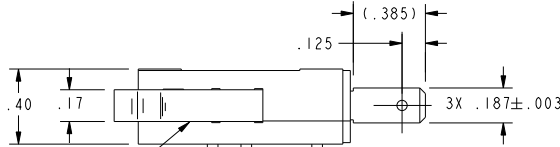
For any questions, you can email us directly:

sales@integrated-circuit.com

FO-50360-L

WM-B4334

REV	DOCUMENT	CHANGED BY	CHECK
3	0041196	JA 01JUL08	ASD



CHARACTERISTICS
OPERATING FORCE----- 127 GRAMS MAX
RELEASE FORCE----- 14 GRAMS MIN
DIFFERENTIAL TRAVEL----- .018 MAX
OVERTRAVEL----- .046 MIN
RELEASE TRAVEL----- .011 MIN

ELECTRICAL DATA
CONTACT ARRANGEMENT S P D T
L215
15.1A 1/2HP 125, 250 OR 277 VAC
1/2 125VDC
1/4A 250 VDC; 5A 125 VAC "L"

UNLESS OTHERWISE SPECIFIED TOLERANCES ARE:	US INCH CUSTOMARY	SI METRIC
NO PLACE	±.040	±1
ONE PLACE	.X ±.030	±0.4
TWO PLACE	.XX ±.015	±0.15
THREE PLACE	.XXX ±.005	±
ANGLES	±	±
RAW MATERIAL-COMMERCIAL STANDARD	±	±

THIRD ANGLE PROJECTION

DRAWN	TSM	02MAR00
CHECK	SAV	02MAR00
THIS DRAWING COVERS A PROPRIETARY ITEM AND IS THE PROPERTY OF HONEYWELL. THIS DRAWING IS NOT TO BE COPIED OR USED WITHOUT THE PERMISSION OF HONEYWELL.		
DIMENSIONS ARE TO BE MET BEFORE PROTECTIVE COATINGS ARE APPLIED		
PTC 2D	ASME Y14.5M-1994	

Honeywell			
TITLE SWITCH, BASIC			
SIZE	DWG TYPE	DRAWING NAME	REV
B	I	7VP34	3
SCALE	2:1	WEIGHT	SHEET 1 OF 1