

Excellent Integrated System Limited

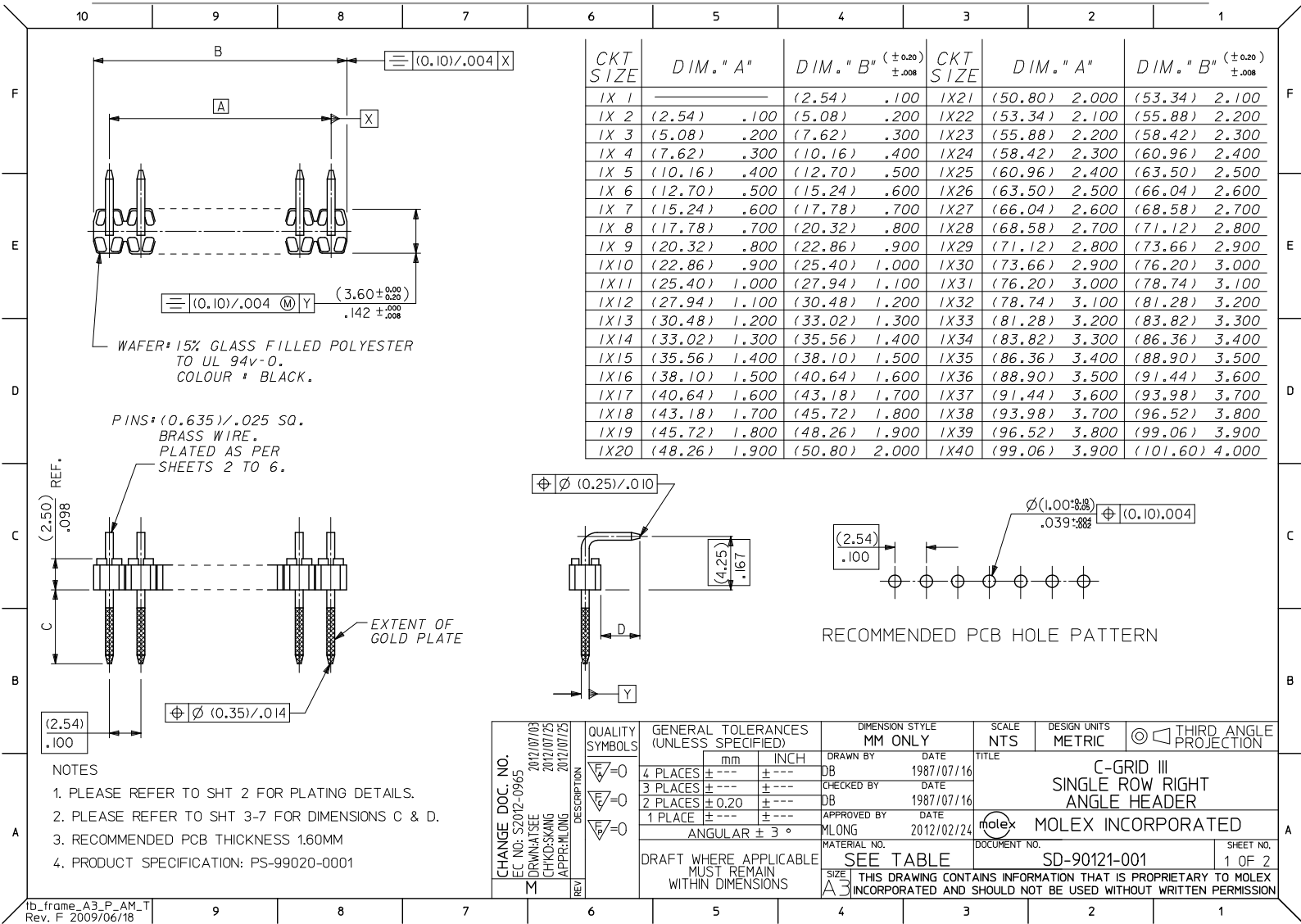
Stocking Distributor

Click to view price, real time Inventory, Delivery & Lifecycle Information:

[Molex Connector Corporation](#)
[90121-0160](#)

For any questions, you can email us directly:

sales@integrated-circuit.com





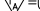



PLATING OPTIONS

PLATING	PLATING DESCRIPTION
A	3.00µm MIN TIN OVER 1.27MIN NICKEL OVERALL
E	0.38µm MIN GOLD IN SELECTED AREA (2 SIDES) AND 3.00µm MIN TIN IN SELECTED AREA AND 1.30µm MIN NICKEL OVERALL
F	0.76µm MIN GOLD IN SELECTED AREA (2 SIDES) AND 3.00µm MIN TIN IN SELECTED AREA AND 1.30µm MIN NICKEL OVERALL
G	0.05-0.10µm GOLD FLASH IN SELECTED AREA (2 SIDES) AND 3.00µm MIN TIN IN SELECTED AREA AND 1.30µm MIN NICKEL OVERALL

CIRCUIT SIZE	PLATING TYPE A		PLATING TYPE E		PLATING TYPE F		PLATING TYPE G	
	PART NO.		PART NO.		PART NO.		PART NO.	
I X 1	90121-0121	-0122	90121-0761	-0762	90121-0921	-0922	90121-1081	-1082
I X 2		-0123		-0763		-0923		-1083
I X 3		-0124		-0764		-0924		-1084
I X 4		-0125		-0765		-0925		-1085
I X 5		-0126		-0766		-0926		-1086
I X 6		-0127		-0767		-0927		-1087
I X 7		-0128		-0768		-0928		-1088
I X 8		-0129		-0769		-0929		-1089
I X 9		-0130		-0770		-0930		-1090
I X 10		-0131		-0771		-0931		-1091
I X 11		-0132		-0772		-0932		-1092
I X 12		-0133		-0773		-0933		-1093
I X 13		-0134		-0774		-0934		-1094
I X 14		-0135		-0775		-0935		-1095
I X 15		-0136		-0776		-0936		-1096
I X 16		-0137		-0777		-0937		-1097
I X 17		-0138		-0778		-0938		-1098
I X 18		-0139		-0779		-0939		-1099
I X 19		-0140		-0780		-0940		-1100
I X 20		-0141		-0781		-0941		-1101
I X 21		-0142		-0782		-0942		-1102
I X 22		-0143		-0783		-0943		-1103
I X 23		-0144		-0784		-0944		-1104
I X 24		-0145		-0785		-0945		-1105
I X 25		-0146		-0786		-0946		-1106
I X 26		-0147		-0787		-0947		-1107
I X 27		-0148		-0788		-0948		-1108
I X 28		-0149		-0789		-0949		-1109
I X 29		-0150		-0790		-0950		-1110
I X 30		-0151		-0791		-0951		-1111
I X 31		-0152		-0792		-0952		-1112
I X 32		-0153		-0793		-0953		-1113
I X 33		-0154		-0794		-0954		-1114
I X 34		-0155		-0795		-0955		-1115
I X 35		-0156		-0796		-0956		-1116
I X 36		-0157		-0797		-0957		-1117
I X 37		-0158		-0798		-0958		-1118
I X 38		-0159		-0799		-0959		-1119
I X 39		-0160		-0800		-0960		-1120
I X 40								

DIM C
(±0.25)
±.008
(6.75)
.266

DIM D
(±0.25)
±.010
(2.90)
.114

CHANGE DOC. NO. EC NO: S2012-0965 M DRAWN BY: DRW:ATSEE CHKD:SKANG APPR:HLONG	2017/07/03	DESCRIPTION	QUALITY SYMBOLS	GENERAL TOLERANCES (UNLESS SPECIFIED)			DIMENSION STYLE MM ONLY		SCALE NTS	DESIGN UNITS METRIC	 THIRD ANGLE PROJECTION		
	2017/07/25												
	2017/07/25												
	2017/07/25												
	2017/07/25												
	2017/07/25												
	2017/07/25												
	2017/07/25												
	2017/07/25												
	2017/07/25												
				 =0	4 PLACES	± ---	± ---	DB	1987/07/16	C-GRID III SINGLE ROW RIGHT ANGLE HEADER			
				 =0	3 PLACES	± ---	± ---	DB	1987/07/16				
				 =0	2 PLACES	± 0.20	± ---	DB	1987/07/16				
				 =0	1 PLACE	± ---	± ---	APPROVED BY MLONG	DATE 2012/02/24	 MOLEX INCORPORATED	MOLEX INCORPORATED		
				ANGULAR ± 3 °									
				DRAFT WHERE APPLICABLE MUST REMAIN WITHIN DIMENSIONS									
							MATERIAL NO. SEE TABLE		DOCUMENT NO. SD-90121-001		SHEET NO. 2 OF 2		
							SIZE A3		THIS DRAWING CONTAINS INFORMATION THAT IS PROPRIETARY TO MOLEX INCORPORATED AND SHOULD NOT BE USED WITHOUT WRITTEN PERMISSION				