

Excellent Integrated System Limited

Stocking Distributor

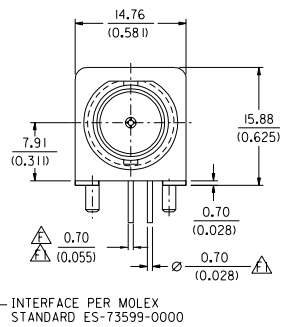
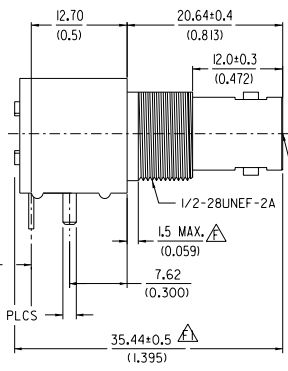
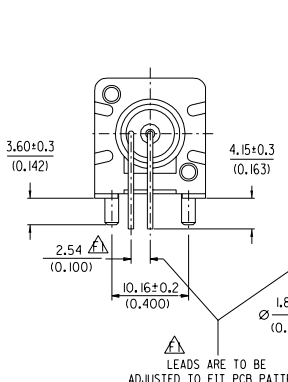
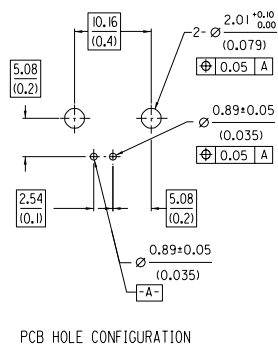
Click to view price, real time Inventory, Delivery & Lifecycle Information:

[Molex Connector Corporation](#)
[0731385013](#)

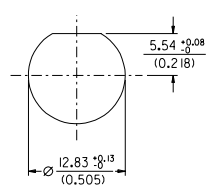
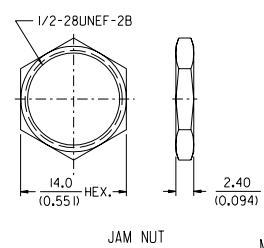
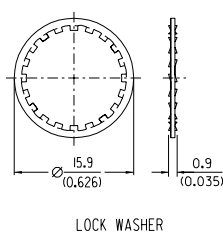
For any questions, you can email us directly:

sales@integrated-circuit.com

ENG. NO.
EDP NO.
SIMILAR ITEM
CADFILE NO.
DO NOT SCALE DRAWING



- CONSTRUCTION:**
 BODY-----ZINC ALLOY
 HOUSING-----POLYESTER BUTYLENE TEREPHTHALATE (WHITE)
 CENTER CONTACT----PHOSPHOR BRONZE
 DIELECTRIC-----POLYPROPYLENE (94V2)
 MOUNTING POST-----BRASS
 SOLDER TAIL-----COPPER OVER STEEL WIRE
 LOCK WASHER -----PHOSPHOR BRONZE
 NUT-----BRASS
- FINISH:**
 BODY-----NICKEL PLATING
 CENTER CONTACT----GOLD FLASH
 SOLDER TAIL-----TIN PLATING
 MOUNTING POST-----TIN PLATING
 LOCK WASHER -----NICKEL PLATING
 NUT-----NICKEL PLATING



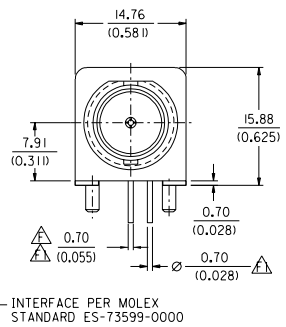
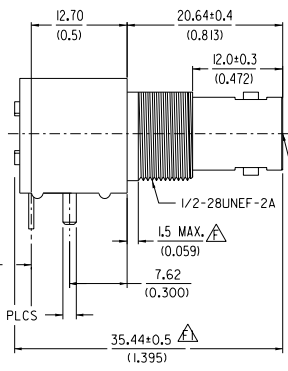
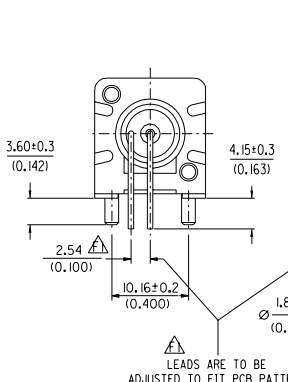
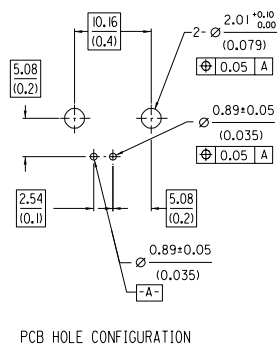
MECHANICAL & ELECTRICAL CHARACTERISTICS:
 PER PRODUCT SPECIFICATION: PS-73598-0050

MATERIAL & FINISH CHARACTERISTICS:
 PER PRODUCT SPECIFICATION: PS-73598-0050

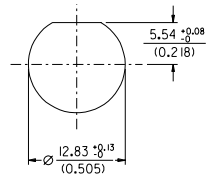
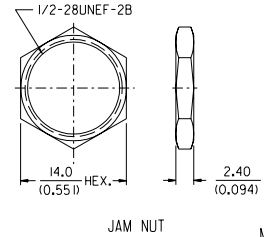
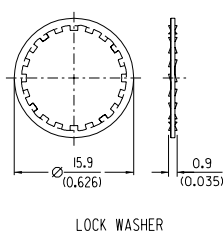
PACKAGING:
 TRAY PACKAGING

				MATERIAL : SEE NOTES		MOLEX TAIWAN LTD. (R.F. DIVISION)	
				FINISH : SEE NOTES			
				SCALE : 2:1		UNIT : mm(INCH)	
				DRAWN BY : Lilly		92/01/23	
				CHK'D BY :		GENERAL TOLERANCES ANGLE : ± 3° DIM. ± 0.25 (±.01)	
				APPR'D BY :		DRW. NO.: SDA-73138-5013 REV F1	
				STANDARD ITEM <input type="checkbox"/> YES <input checked="" type="checkbox"/> NO		TITLE : 50 OHMS BNC R/A PCB RECEPTACLE (MOLDED)	
				SHEET OF			

ENG. NO.
EDP NO.
SIMILAR ITEM
CADFILE NO.
DO NOT SCALE DRAWING



- CONSTRUCTION:**
 BODY-----ZINC ALLOY
 HOUSING-----POLYESTER BUTYLENE TEREPHTHALATE (WHITE)
 CENTER CONTACT----PHOSPHOR BRONZE
 DIELECTRIC-----POLYPROPYLENE (94V2)
 MOUNTING POST-----BRASS
 SOLDER TAIL-----COPPER OVER STEEL WIRE
 LOCK WASHER -----PHOSPHOR BRONZE
 NUT-----BRASS
- FINISH:**
 BODY-----NICKEL PLATING
 CENTER CONTACT----GOLD FLASH
 SOLDER TAIL-----TIN PLATING
 MOUNTING POST-----TIN PLATING
 LOCK WASHER -----NICKEL PLATING
 NUT-----NICKEL PLATING



MECHANICAL & ELECTRICAL CHARACTERISTICS:
 PER PRODUCT SPECIFICATION: PS-73598-0050

MATERIAL & FINISH CHARACTERISTICS:
 PER PRODUCT SPECIFICATION: PS-73598-0050

PACKAGING:
 TRAY PACKAGING

				MATERIAL : SEE NOTES		MOLEX TAIWAN LTD. (R.F. DIVISION)	
				FINISH : SEE NOTES			
				SCALE : 2:1		GENERAL TOLERANCES	
				UNIT : mm(INCH)		ANGLE : ± 3° DIM. ± 0.25 (±.01)	
				DRAWN BY : Lilly 92/01/23		DRW. NO.: SDA-73138-5013 REV F1	
				CHK'D BY :		TITLE : 50 OHMS BNC R/A PCB RECEPTACLE (MOLDED)	
				APPR'D BY :			
				STANDARD ITEM <input type="checkbox"/> YES <input checked="" type="checkbox"/> NO		SHEET OF	