

## Excellent Integrated System Limited

Stocking Distributor

Click to view price, real time Inventory, Delivery & Lifecycle Information:

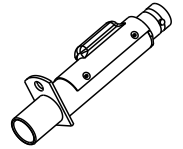
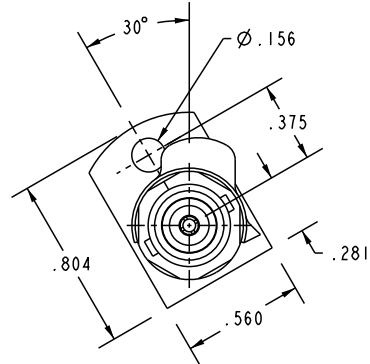
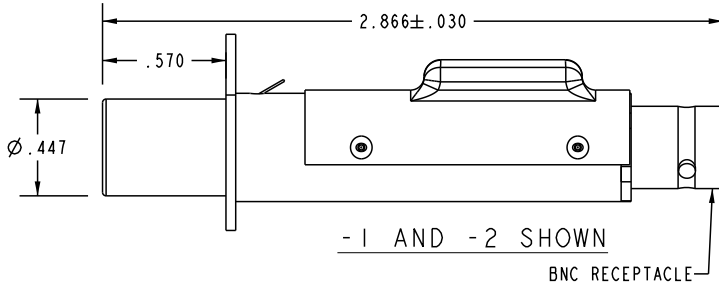
[Bel Fuse Inc.](#)  
[J13-50](#)

For any questions, you can email us directly:  
[sales@integrated-circuit.com](mailto:sales@integrated-circuit.com)

MODEL NO.	ACCEPTS PIN DIA.	RECEPTACLE TYPE
J13- $\triangle$	.070 (RCA)	BNC
J13W- $\triangle$	.090 (W.E.CO.)	
J13H- $\triangle$	.070 (RCA)	TNC
J13WH- $\triangle$	.090 (W.E.CO.)	

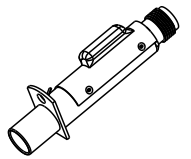
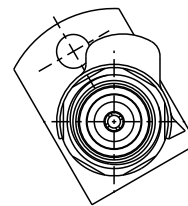
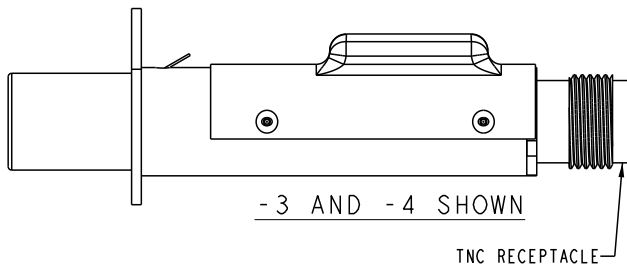
DATA CONTAINED IN THIS DOCUMENT IS PROPRIETARY TO EMERSON CONNECTIVITY SOLUTIONS AND SHALL NOT BE DISCLOSED, COPIED OR USED FOR PROCUREMENT OR MANUFACTURE WITHOUT EXPRESS WRITTEN PERMISSION

REVISIONS			
REV	DESCRIPTIONS	DATE	APPROVED
A	ECO 52227	3/24/10	C. MONAHAN



SCALE 1/2

DIMENSIONS APPLY TO ALL DASH NUMBERS



SCALE 1/2

4. EXAMPLE OF COMPLETE MODEL NUMBER:

J13- $\triangle$

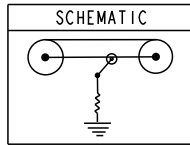
BASIC MODEL NUMBER(SEE TABLE)

3. 50 & 75  $\Omega$  SELF-TERMINATING COAXIAL PATCH JACK WITH BNC OR TNC RECEPTACLE

$\triangle$  RESISTANCE VALUE IN  $\Omega$  (1/2 W 1%)

1. TFS-1A (NICKEL)

NOTES: UNLESS OTHERWISE SPECIFIED.



INTERPRET DRAWING PER MIL-STD-100. DIMENSIONS ARE IN INCHES AND INCLUDE FINISH THICKNESS UNLESS OTHERWISE SPECIFIED.

TOL: UNLESS SPECIFIED.  
.XX ± .02  
.XXX ± .010  
ANGLE ± 1°



Cinch Connectivity Solutions  
299 Johnson Ave. Ste. 100  
Waseca, MN 56093  
1-800-247-8256

DRN	C. WALLACE	5/10/10
CHK		
QUALITY		
MANUF		
APPROVED		
PROJ FILE NO.	1-0124	
SURFACE AREA		

MATERIAL:	
FINISH:	
DO NOT SCALE DWG	

TITLE: J13/J13W/J13H/J13WH			
SIZE	CAGE CODE	DRAWING NO.	REV.
A	14949	1-0124	X
SCALE	DATE	SHEET	
1/1	10/19/67	1 OF 2	