

Excellent Integrated System Limited

Stocking Distributor

Click to view price, real time Inventory, Delivery & Lifecycle Information:

[Honeywell Sensing and Productivity Solutions
V3L-2226](#)

For any questions, you can email us directly:

sales@integrated-circuit.com



MICRO SWITCH

FREEPORT ILLINOIS, U.S.A
 A DIVISION OF HONEYWELL
 FED. MFG. CODE 91929

SWITCH - BASIC

CATALOG LISTING

V3L-2226

CQ-X1507

5

V3L-2226

M

DRAWING NUMBER

2

ISSUE 3

REPLACES X68576-V3L

RELEASE NO. PR-7488

CHECK

REVISIONS

A CO 82921
 SMA 29 SEPT 86
 B CO 76417
 JAL 20 OCT 93

CHECK

2 NOV 78

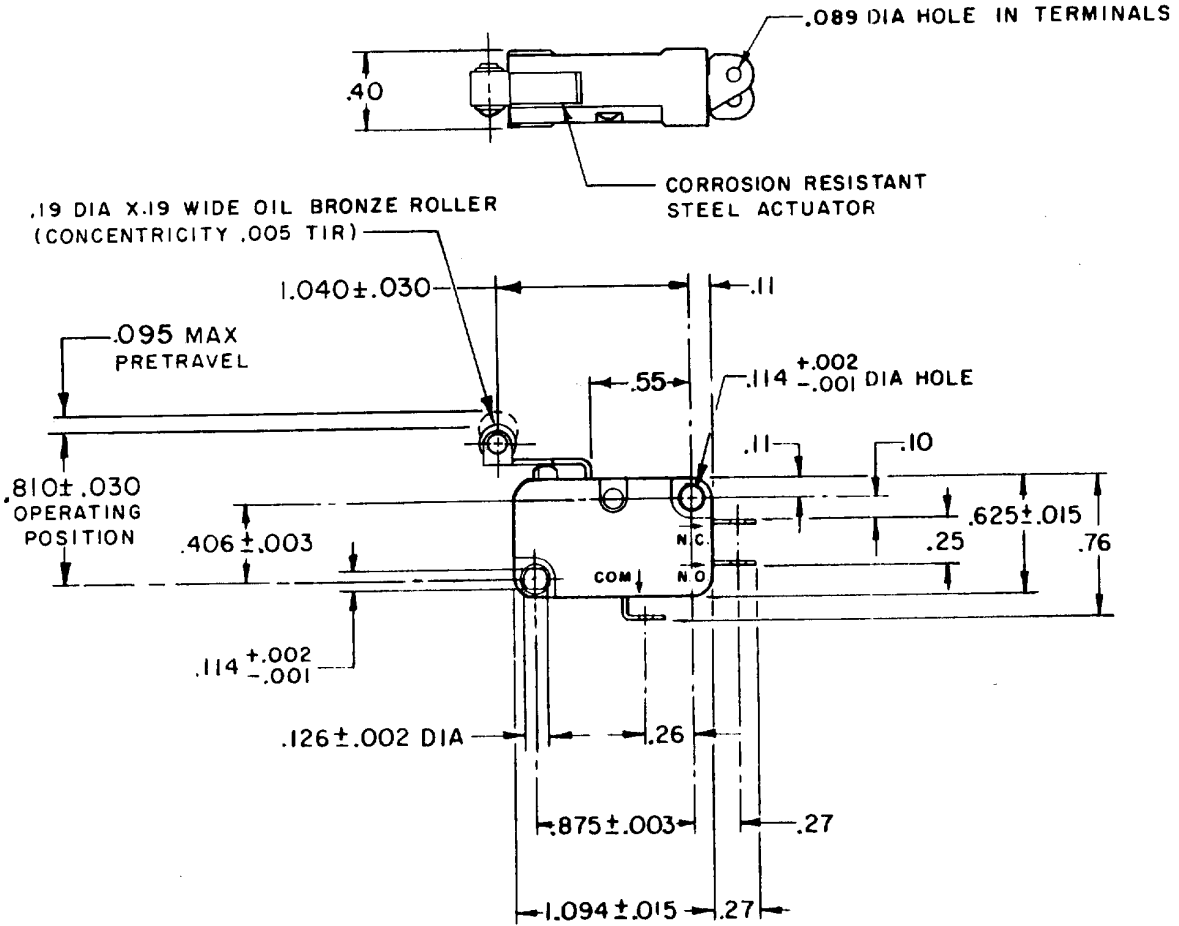
CHECK C E B

CHECK

31 OCT 78

WJM

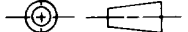
FO-52848-A



NOTE -
 1 - TERMINALS ARE PLATED FOR SOLDERING

THIS DRAWING COVERS A PROPRIETARY ITEM AND IS THE PROPERTY OF MICRO SWITCH, A DIVISION OF HONEYWELL. THIS DRAWING IS NOT TO BE COPIED OR USED WITHOUT THE APPROVAL OF MICRO SWITCH.

THIRD ANGLE PROJECTION



CHARACTERISTICS

OPERATING FORCE---- 40 GRAM MAX
 RELEASE FORCE----- 2 GRAM MIN
 DIFFERENTIAL TRAVEL----- .028 MAX
 OVERTRAVEL----- .050 MIN
 RELEASE TRAVEL----- .014 MIN

ELECTRICAL DATA

CONTACT ARRANGEMENT
 S P D T

L131 10A-1/4HP-125 OR 250 VAC
 1/2A-125 VDC; 1/4A-250 VDC
 3A-125 VAC "L"



SCALE FULL

DO NOT SCALE PRINT

TOLERANCES

APPLY TO DESIGN UNITS. CONVERSIONS ARE ONLY FOR REFERENCE. UNLESS NOTED, TOLERANCES ARE ±

DIM.	TOL.	DIM.	TOL.
mm	mm/in	in	mm/in
NO PLACES	X	1/04	0.07/03
ONE PLACE	X,X	0.4/016	X,X 0.387/015
TWO PLACES	X,XX	0.15/.006	X,XXX 0.13/.005
THREE PLACES	X,XXX		
ANGLES			

DESIGN UNITS SI METRIC US CUSTOMARY

WEIGHT