

Excellent Integrated System Limited

Stocking Distributor

Click to view price, real time Inventory, Delivery & Lifecycle Information:

[Honeywell Sensing and Productivity Solutions](#)
[V3L-2436](#)

For any questions, you can email us directly:

sales@integrated-circuit.com

MICRO SWITCH

FREEPORT ILLINOIS, U.S.A
 A DIVISION OF HONEYWELL
 FED. MFG. CODE 91929

SWITCH - BASIC

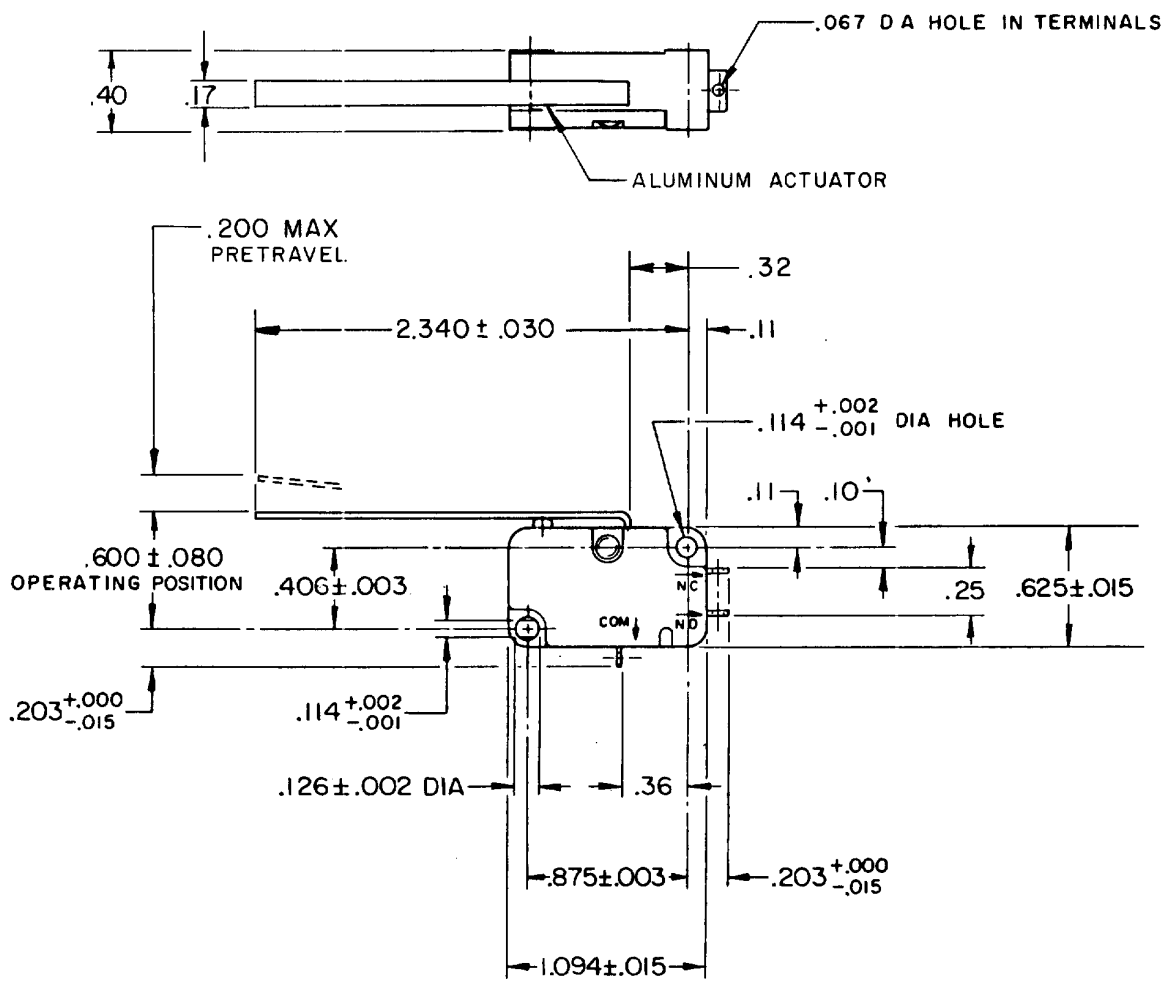
CATALOG LISTING

V3L-2436

CQ-XI552

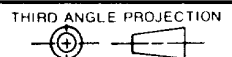
S

V3L-2436
 DRAWING NUMBER
 ISSUE 4
 REVISIONS
 A PR-7605
 C E B
 20 JAN 79
 CO
 59921
 BMA
 29 SEPT 86
 CO
 76448
 DCS
 28 JAN 94
 CHECK
 20 JAN 79
 CHECK
 C E B
 17 JAN 79
 CHECK
 C J H
 DRAWN
 FO-52848-A



NOTE -
 FORCE CHARACTERISTICS CHECKED WITH SWITCH LYING ON SIDE

THIS DRAWING COVERS A PROPRIETARY ITEM AND IS THE PROPERTY OF MICRO SWITCH, A DIVISION OF HONEYWELL. THIS DRAWING IS NOT TO BE COPIED OR USED WITHOUT THE APPROVAL OF MICRO SWITCH.



CHARACTERISTICS	
OPERATING FORCE	--- 7 GRAMS, MAX
RELEASE TRAVEL	----- .030 MIN
DIFFERENTIAL TRAVEL	----- .055 MAX
OVERTRAVEL	----- .160 MIN

ELECTRICAL DATA	
CONTACT ARRANGEMENT S P D T	
L162 5A-125, 250, 277VAC 1/10HP-250VAC 	

SCALE FULL			
DO NOT SCALE PRINT			
TOLERANCES APPLY TO DESIGN UNITS. CONVERSIONS ARE ONLY FOR REFERENCE. UNLESS NOTED, TOLERANCES ARE ±			
DIM.	TOL.	DIM.	TOL.
mm	mm/in	in	mm/in
NO PLACES	X	1/04	
ONE PLACE	X,X	0.4/018	X X 0.8/03
TWO PLACES	X,XX	0.15/006	X XX 0.38/015
THREE PLACES	X,XXX		X XXX 0.13/005
ANGLES			
SI METRIC		US CUSTOMARY	
DESIGN UNITS <input type="checkbox"/>		DESIGN UNITS <input checked="" type="checkbox"/>	
WEIGHT			