

Excellent Integrated System Limited

Stocking Distributor

Click to view price, real time Inventory, Delivery & Lifecycle Information:

[Honeywell Sensing and Productivity Solutions](#)
[V3L-2905](#)

For any questions, you can email us directly:

sales@integrated-circuit.com



MICRO SWITCH
 a Honeywell Division
 FED. MFG. CODE 91929

SWITCH - BASIC

CATALOG LISTING
V3L-2905
CQ-X1636

REPLACES X101188-V3L

RELEASE NO. PR-22425

CATALOG LISTING
V3L-2905
 PAGE 1 OF 1

ISSUE
M
 1

CHECK

REVISIONS

CHECK

CHECK

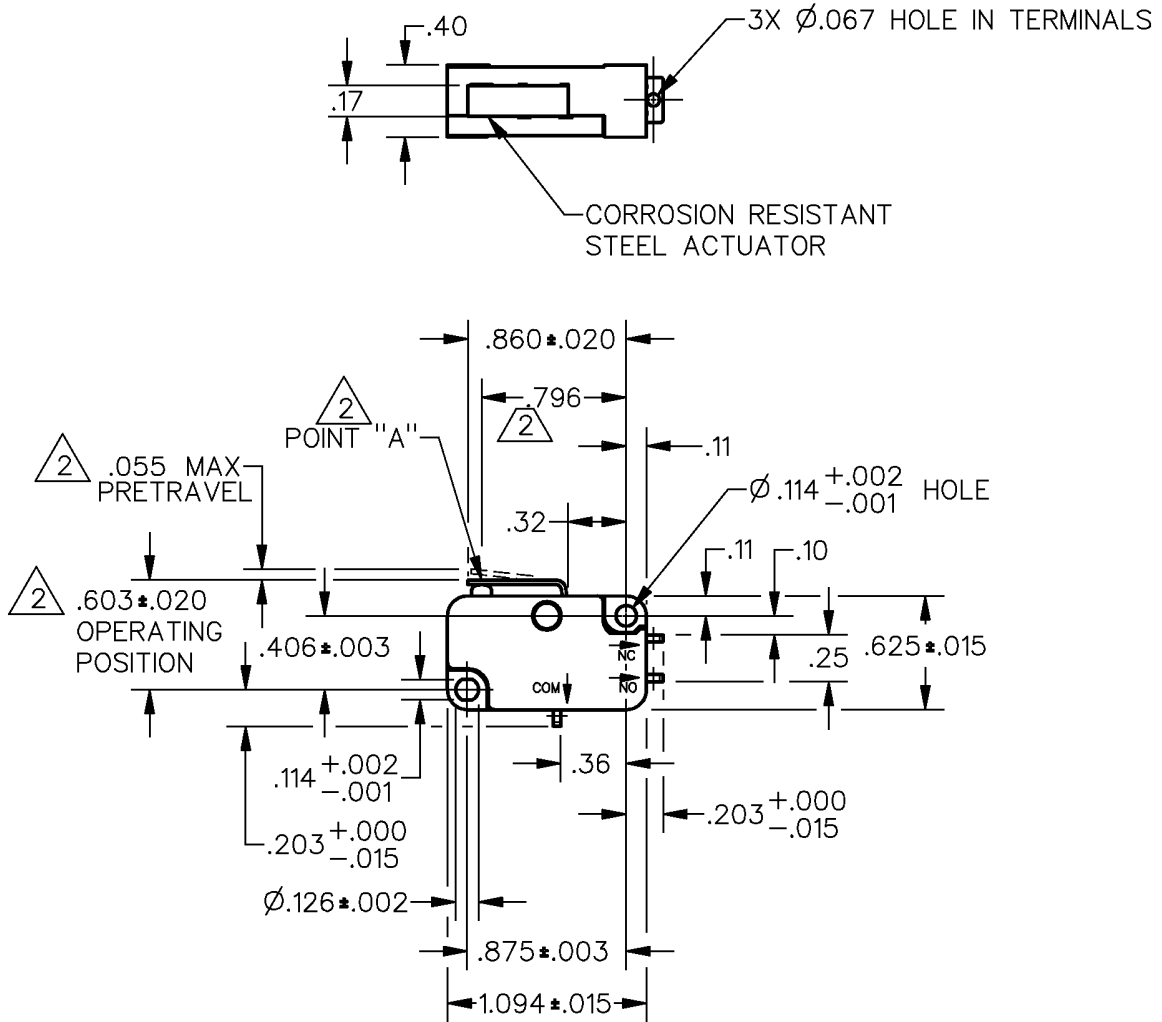
CHECK

CHECK

CHECK

CHECK

CHECK



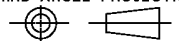
NOTES

- 1 - TERMINALS ARE SILVER PLATED
- 2 CHARACTERISTICS MEASURED AT POINT "A"
- 3 - MAXIMUM MECHANICAL DEAD BREAK OF .0031 CAN BE EXPECTED WITH THIS SWITCH CONSTRUCTION

ANSI Y14.5M-1982 APPLIES

THIS DRAWING COVERS A PROPRIETARY ITEM AND IS THE PROPERTY OF MICRO SWITCH, A DIVISION OF HONEYWELL. THIS DRAWING IS NOT TO BE COPIED OR USED WITHOUT THE APPROVAL OF MICRO SWITCH.

THIRD ANGLE PROJECTION



CHARACTERISTICS 2	ELECTRICAL DATA	SCALE FULL	DO NOT SCALE PRINT
OPERATING FORCE --- 271 GRAMS MAX	CONTACT ARRANGEMENT S P D T	UNLESS OTHERWISE SPECIFIED TOLERANCES ARE	
RELEASE FORCE --- 24 GRAMS MIN	25A, 277 VAC		
DIFFERENTIAL TRAVEL --- .012 MAX	1HP, 125 VAC	ONE PLACE (.0) ± .030	
OVERTRAVEL --- .032 MIN	2HP, 250 VAC	TWO PLACE (.00) ± .015	
RELEASE TRAVEL --- .007 MIN		THREE PLACE (.000) ± .005	
		ANGLES ±	
		WEIGHT	



DDM/CAD
 DRAWN
 DCS 15 NOV 96