

## Excellent Integrated System Limited

Stocking Distributor

Click to view price, real time Inventory, Delivery & Lifecycle Information:

[Honeywell Sensing and Productivity Solutions](#)  
[YZ-2RW82725551-D6](#)

For any questions, you can email us directly:

[sales@integrated-circuit.com](mailto:sales@integrated-circuit.com)

CATALOG LISTING  
**YZ-2RW82725551-D6**  
 PAGE 1 OF 1  
**M**  
 ISSUE 2  
 REVISIONS  
**A 200763**  
 CSL  
 10 JUL 00  
 REPLACES PR-24075  
 RELEASE NO.  
 X111533-YZ  
 CHECK  
 7 JUN 99  
 JAF  
 CHECK  
 7 JUN 99  
 G J W  
 DRAWN  
 FORMTEK

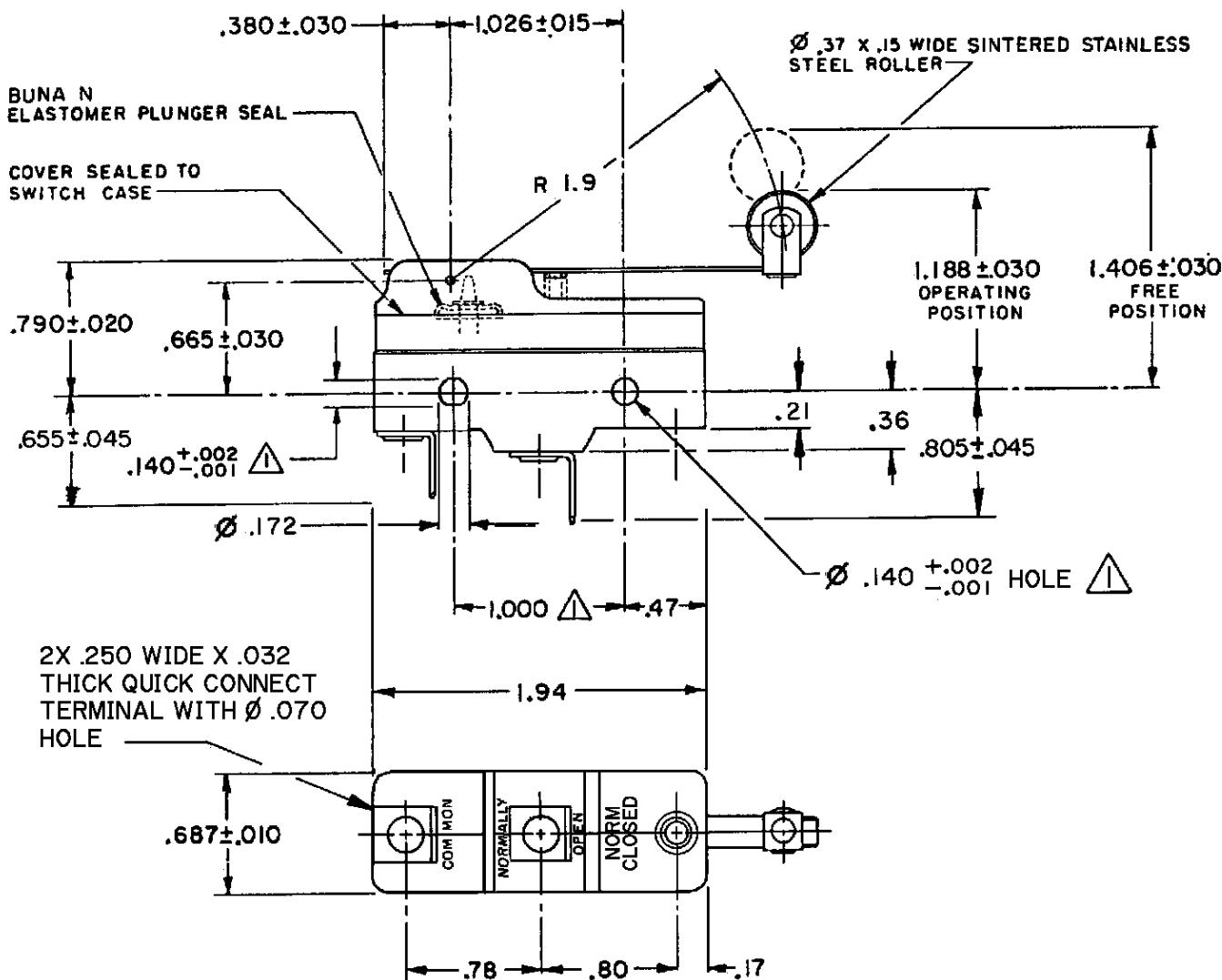
**MICRO SWITCH**  
 a Honeywell Division

FED. MFG. CODE 91929

**SWITCH - BASIC**

CATALOG LISTING

**YZ-2RW82725551-D6**

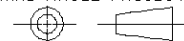


- NOTES**
- 1 MOUNTING HOLES WILL ACCEPT PINS OR SCREWS OF Ø .139 MAX ON 1.000 ±.002 CENTERS
  - 2 SEALED CONSTRUCTION PROVIDES SPLASH RESISTANCE
  - 3 CONTACT MATERIAL - GOLD ALLOY

ANSI Y14.5M-1982 APPLIES

THIS DRAWING COVERS A PROPRIETARY ITEM AND IS THE PROPERTY OF MICRO SWITCH, A DIVISION OF HONEYWELL. THIS DRAWING IS NOT TO BE COPIED OR USED WITHOUT THE APPROVAL OF MICRO SWITCH.

THIRD ANGLE PROJECTION



CHARACTERISTICS	ELECTRICAL DATA	SCALE	FULL	
		DO NOT SCALE PRINT		
OPERATING FORCE --- 3 1/2 OZ MAX	CONTACT ARRANGEMENT SPNO	UNLESS OTHERWISE SPECIFIED TOLERANCES ARE		
RELEASE FORCE --- 3/4 OZ MIN	L22 1A 125 VAC 	ONE PLACE (.0)	±.030	
DIFFERENTIAL TRAVEL --- .004 - .040	L288 L299 L307	TWO PLACE (.00)	±.015	
OVERTRAVEL --- .156 MIN	1A 250V  T85 25E3	THREE PLACE (.000)	±.005	
		ANGLES	±	
		WEIGHT	.076 LB	