

Excellent Integrated System Limited

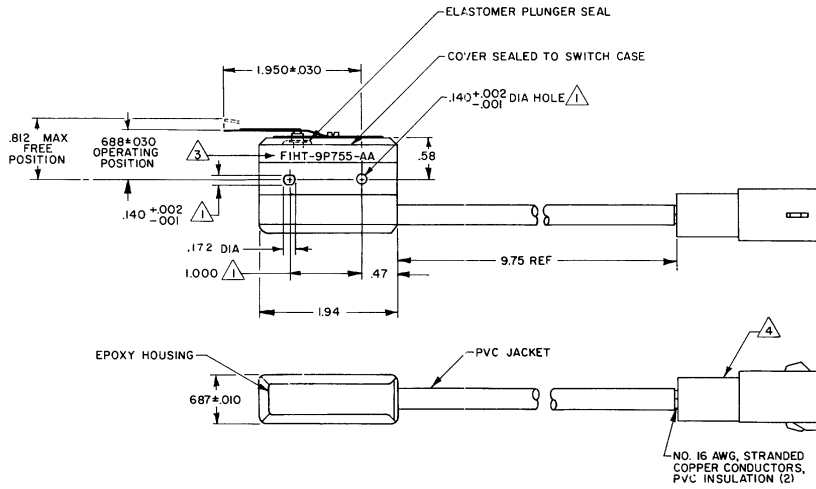
Stocking Distributor

Click to view price, real time Inventory, Delivery & Lifecycle Information:

[Honeywell Sensing and Productivity Solutions](#)
[YZ-3RL55517-W103](#)

For any questions, you can email us directly:

sales@integrated-circuit.com



- NOTES
- 1 MOUNTING HOLES WILL ACCEPT PINS OR SCREWS OF .139 MAX DIA ON 1.000±.002 CENTERS
 - 2 SELABD CONSTRUCTION PROVIDES SPLASH RESISTANCE
 - 3 FORD PART NUMBER AND LOGO APPEARS ON OPPOSITE SIDE OF SWITCH SHOWN
 - 4 TERMINAL CONNECTOR: PEC-PLASTICS ENG. DIV - CONNECTOR P/N E43B-14A624-CA
 ALTAIR INTERNATIONAL - TERMINALS P/N E8EB-14461-HA
 AUGAT AUTOMOTIVE-SPACER P/N EOAB-14A468-AA
 - 5 LEADWIRE ORIENTATION: COMMON TERMINAL - BLACK WIRE
 NORMALLY OPEN TERMINAL - WHITE WIRE

CHARACTERISTICS	ELECTRICAL DATA
OPERATING FORCE --- 9 OZ MAX	CONTACT ARRANGEMENT S P N O
RELEASE FORCE --- 1/2 OZ MIN	
DIFFERENTIAL TRAVEL --- .065 MAX	
DO NOT OVERTRAVEL MORE THAN --- .060	

THIS DRAWING COVERS A PROPRIETARY ITEM AND IS THE PROPERTY OF MICRO SWITCH, A DIVISION OF HONEYWELL THIS DRAWING IS NOT TO BE COPIED OR USED WITHOUT THE APPROVAL OF MICRO SWITCH

MICRO SWITCH
a Honeywell Division

SWITCH - BASIC

YZ-3RL55517-W103

780 MCG CODE 3123

THIRD ANGLE PROJECTION	
SCALE FULL	
DO NOT SCALE PRINT	
UNLESS OTHERWISE SPECIFIED TOLERANCES ARE	
ONE PLACE	(.0) ±.030
TWO PLACE	(.00) ±.015
THREE PLACE	(.000) ±.005
ANGLES	±
WEIGHT	

M YZ-3RL55517-W103
 REV 1
 DATE 11/15/88
 BY JMS
 CHECKED BY JMS
 APPROVED BY JMS
 10-15882-C
 B A B (B) MAR 80