

Excellent Integrated System Limited

Stocking Distributor

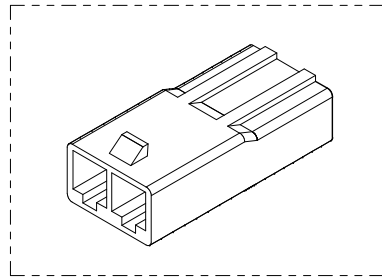
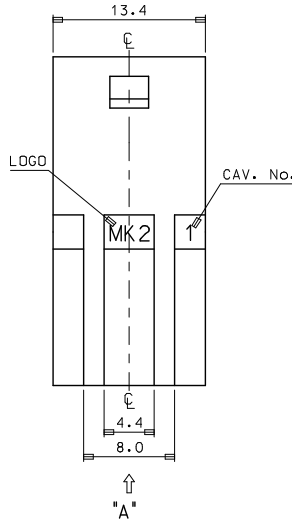
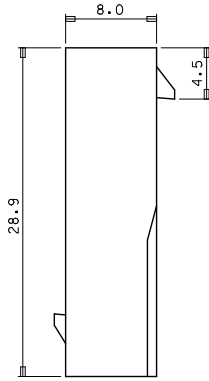
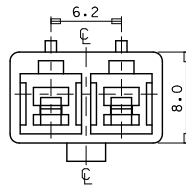
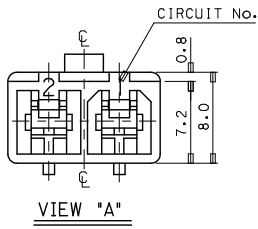
Click to view price, real time Inventory, Delivery & Lifecycle Information:

[Molex Connector Corporation](#)
[0351500204](#)

For any questions, you can email us directly:

sales@integrated-circuit.com

10 9 8 7 6 5 4 3 2 1



- NOTES
1. MATERIAL :SEE TABLE
 2. COLOR :SEE TABLE
 3. MATCHED HOUSING : 35151-021*
35150-029* (TPA)
 4. APPLIED TERMINAL : 35745-0*10

NO	PRODUCT		MATERIAL	
	PART NO	MATERIAL NO	COLOR	DESCRIPTION
1	35150-0200	351500200	NATURAL	PBT (UL94V-0)
2	35150-0202	351500202	RED	
3	35150-0204	351500204	BLUE	
4	35150-0209	351500209	NATURAL	PC/PET (UL94V-0)
5	35150-2209	351502209	RED	
6	35150-3209	351503209	YELLOW	
7	35150-4209	351504209	BLUE	

REVISED
EC NO: KOR2009-0026
DRAWN: HPAK01 2008/09/25
CHKD: WT. YANG 2008/11/25
APPR: TUNSIKKITH 2008/11/25

QUALITY SYMBOLS
▽=0
▽=0

	GENERAL TOLERANCES (UNLESS SPECIFIED)	
	mm	INCH
4 PLACES	± ---	± ---
3 PLACES	± ---	± ---
2 PLACES	± ---	± ---
1 PLACE	± 0.2	± ---
ANGULAR ± 1 °		

DIMENSION STYLE
MM ONLY

DRAWN BY JS.KANG DATE
CHECKED BY DATE
APPROVED BY DATE

MATERIAL NO. SEE TABLE
DOCUMENT NO. SD-35150-020*

SCALE 3:1
DESIGN UNITS METRIC
THIRD ANGLE PROJECTION

TITLE
6.2 PITCH W/W CONN
MALE HOUSING-2P(W/O EAR)

MOLEX INCORPORATED

SHEET NO. 1 OF 01

DRAFT WHERE APPLICABLE
MUST REMAIN
WITHIN DIMENSIONS

SIZE A3
THIS DRAWING CONTAINS INFORMATION THAT IS PROPRIETARY TO MOLEX INCORPORATED AND SHOULD NOT BE USED WITHOUT WRITTEN PERMISSION

9 8 7 6 5 4 3 2 1