

Excellent Integrated System Limited

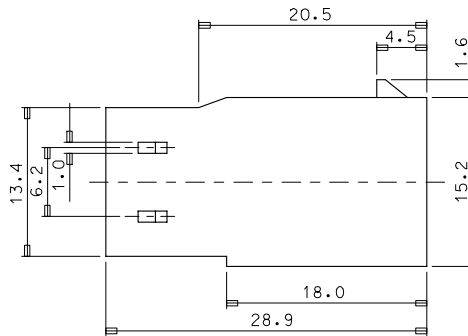
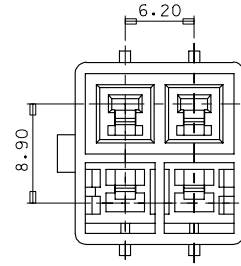
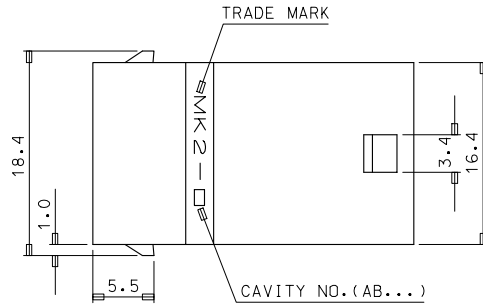
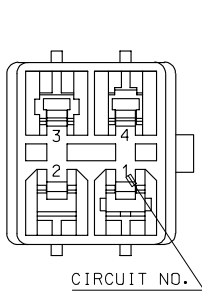
Stocking Distributor

Click to view price, real time Inventory, Delivery & Lifecycle Information:

[Molex Connector Corporation](#)
[0351500400](#)

For any questions, you can email us directly:

sales@integrated-circuit.com



NOTES

- MATED HOUSING: 35151-0410
- APPLICABLE TERMINAL: 35745-**** (1CKT)
35746-**** (3CKT)
35747-**** (2CKT)
35748-**** (4CKT)
- APPLICABLE T.P.A: 35150-0290

NO	PRODUCT		MATERIAL	
	PART NO	MATERIAL NO	COLOR	DESCRIPTION
1	35150-0400	351500400	NATURAL	PBT
2	35150-0404	351500404	BLUE	(UL94V-0)
3	35150-0409	351500409	NATURAL	PBT/PC(UL94V-0)

REVISED EC NO: KOR2008-0048 DRAWN: HJARKO1 2007/09/10 CHKDWT: YANG 2007/09/10 APPR: YUNSIKIM 2007/09/10	QUALITY SYMBOLS ▽=0 ▽=0	GENERAL TOLERANCES (UNLESS SPECIFIED)		DIMENSION STYLE MM ONLY	SCALE 3:1	DESIGN UNITS METRIC	THIRD ANGLE PROJECTION
		4 PLACES ± --- ± --- 3 PLACES ± --- ± --- 2 PLACES ± --- ± --- 1 PLACE ± 0.3 ± ---	INCH	DRAWN BY WY. YANG	DATE	TITLE 6.2 PITCH W/W MALE HOUSING-4P	
		ANGULAR ± 1 °		CHECKED BY BK. CHOI	DATE	MOLEX INCORPORATED	
		DRAFT WHERE APPLICABLE MUST REMAIN WITHIN DIMENSIONS		APPROVED BY	DATE	MATERIAL NO. SEE TABLE	
				DOCUMENT NO. SD-35150-0400	SHEET NO. 1 OF 01		