

## **Excellent Integrated System Limited**

Stocking Distributor

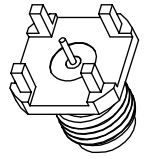
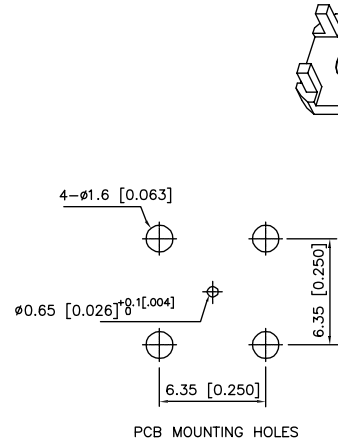
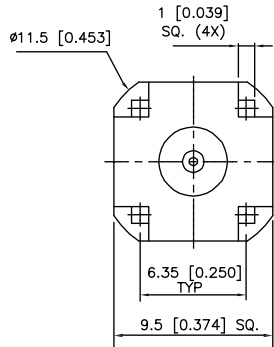
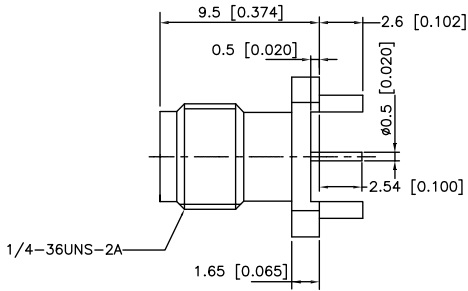
Click to view price, real time Inventory, Delivery & Lifecycle Information:

[Amphenol RF](#)  
[132401](#)

For any questions, you can email us directly:

[sales@integrated-circuit.com](mailto:sales@integrated-circuit.com)

REV.	DATE	DESCRIPTION
A	07/08/09	RELEASE TO MFG.



The connector interface meets MIL-STD-348

**ELECTRICAL CHARACTERISTICS:**

Characteristic impedance : 50Ω

Working voltage : 335V

Frequency range : DC-6.0GHz

Dielectric withstanding voltage : 1000V

Contact resistance : Center contact : ≤3mΩ

Outer contact : ≤2mΩ

Insulation resistance : ≥5000MΩ

High temp. Process Statement:

230℃ for 30 to 60 seconds and 230℃ for 10 seconds

This component and ITS homogeneous subcomponents

are RoHS compliant.

NO	DESCRIPTION	MATERIAL	FINISH	QTY	DO NOT SCALE DRAWING	APPROVALS	DATE	Amphenol Connex			
3	CENTER CONTACT	BERYLLIUM COPPER	GOLD	1	<small>UNLESS OTHERWISE SPECIFIED DIMENSIONS ARE IN MILLIMETERS. DIMENSIONS IN [ ] ARE IN INCHES AND FOR CUSTOMER REFERENCE ONLY.</small> <small>UNLESS OTHERWISE SPECIFIED TOLERANCES FOR MILLIMETERS ARE:</small> 0.5 - 8mm ± 0.20mm 8 - 30mm ± 0.40mm 30 - 120mm ± 0.50mm <small>UNLESS OTHERWISE SPECIFIED TOLERANCES FOR INCHES ARE:</small> .020 - .315 = ± 0.007" .315 - 1.180 = ± 0.015" 1.180 - 4.724 = ± 0.020"	DRAWN	CLEMENT	07/08/09	PART DESCRIPTION <b>SMA PCB RECEPTACLE, 0.250 IN SQ FOOTPRINT</b>		
2	INSULATOR	PTFE		1		CHECKED					
1	BODY	BRASS	GOLD	1		ISSUED			PART NO. <b>132401</b>		
						SHEET	1 OF 1		DWG. NO. 132401.DWG		
						CAD FILE	C:\132\132401.DWG		REV. A	SIZE A	SCALE NA