

Excellent Integrated System Limited

Stocking Distributor

Click to view price, real time Inventory, Delivery & Lifecycle Information:

[Vishay/Siliconix](#)
[DG9454EN-T1-E4](#)

For any questions, you can email us directly:

sales@integrated-circuit.com



DG9454

Vishay Siliconix

Compact, Low Power Consumption, Triple SPDT (Triple 2:1 Multiplexers)

DESCRIPTION

The DG9454 is a triple SPDT (triple 2:1 multiplexers) with enhanced performance on low power consumption, while guarantees 1.8 V logic compatible over the full operation voltage range.

The DG9454 is designed to operate from a + 2.7 V to + 13.2 V supply at V+, and + 2.5 V to + 5.5 V at VL.

The DG9454 is a high precision switch of low parasitic capacitance, low leakage, low charge injection, and fast switching speed.

Processed with advanced CMOS technology, the DG9454 conducts equally well in both directions, offers rail to rail analog signal handling and can be used both as multiplexers as well as de-multiplexers.

The advantages of DG9454 at size, weight, power consumption, and low voltage control capability make it ideal for portable consumer applications such as 3D glasses (3D goggles). Its precise switching, wide dynamic range, and low parasitic characters make it a high performance switch for healthcare, data acquisition, and instrument products.

The DG9454 operating temperature is specified from - 40 °C to + 85 °C and are available and the ultra compact 1.8 mm x 2.6 mm miniQFN16 packages.

As a committed partner to the community and the environment, Vishay Siliconix manufactures this product with lead (Pb)-free device terminations. DG9454 is offered in a miniQFN package. The miniQFN package has a nickel-palladium-gold device termination and is represented by the lead (Pb)-free "-E4" suffix. The nickel-palladium-gold device terminations meet all JEDEC standards for reflow and MSL ratings.

FEATURES

- Operates with V+ = 2.7 V to 13.2 V;
VL = 2.5 V to 5.5 V
- Guaranteed 1.8 V logic control at full V+ range
- Low power consumption, < 1 μA
- High bandwidth: 540 MHz
- Low charge injection over the full signal range (less than 0.9 pQ)
- Low switch capacitance (CS(off) 2 pF typ.)
- Good isolation and crosstalk performance (typ. - 65 dB at 10 MHz)
- Compact and light miniQFN16 package (1.8 mm x 2.6 mm)
- Compliant to RoHS Directive 2002/95/EC**
- Halogen-free according to IEC 61249-2-21 definition**

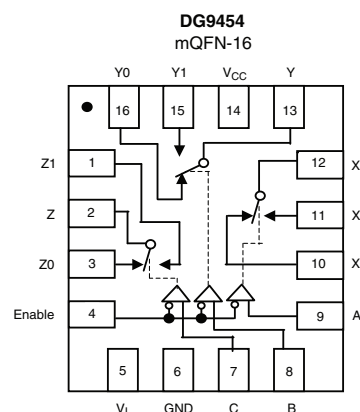


RoHS
COMPLIANT
HALOGEN
FREE

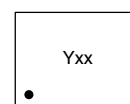
APPLICATIONS

- 3D glasses (goggles)
- Touch panels
- Data acquisition
- Medical and healthcare devices
- Control and automation equipments
- Test instruments

FUNCTIONAL BLOCK DIAGRAM AND PIN CONFIGURATION



Top View



Pin 1

Device Marking: 5xx for DG9454
(miniQFN16)

xx = Date/Lot Traceability Code

DG9454

Vishay Siliconix



TRUTH TABLE				
Enable Input	Select Inputs			On Switches
	C	B	A	DG9454
H	X	X	X	All Switches Open
L	L	L	L	X to X0, Y to Y0, Z to Z0
L	L	L	H	X to X1, Y to Y0, Z to Z0
L	L	H	L	X to X0, Y to Y1, Z to Z0
L	L	H	H	X to X1, Y to Y1, Z to Z0
L	H	L	L	X to X0, Y to Y0, Z to Z1
L	H	L	H	X to X1, Y to Y0, Z to Z1
L	H	H	L	X to X0, Y to Y1, Z to Z1
L	H	H	H	X to X1, Y to Y1, Z to Z1

ORDERING INFORMATION		
Temp. Range	Package	Part Number
DG9454		
- 40 °C to 125 °C ^a	16-Pin miniQFN	DG9454EN-T1-E4

Notes:

a. - 40 °C to 85 °C datasheet limits apply.

ABSOLUTE MAXIMUM RATINGS (T _A = 25 °C, unless otherwise noted)			
Parameter		Limit	Unit
Digital Inputs ^a , V _S , V _D , V _L		GND - 0.3 to (V ₊) + 0.3 or 30 mA, whichever occurs first	V
V ₊ to GND		14	
Continuous Current (Any terminal)		30	mA
Peak Current, S or D (Pulsed 1 ms, 10 % duty cycle)		100	
Storage Temperature		- 65 to 150	°C
Power Dissipation ^b	16-Pin miniQFN ^{c, d}	525	mW
Thermal Resistance ^d	16-Pin miniQFN ^d	152	°C/W
Latch-up (per JESD78)			mA

Notes:

 a. Signals on SX, DX, V_L or INX exceeding V₊ will be clamped by internal diodes. Limit forward diode current to maximum current ratings.

b. All leads welded or soldered to PC board.

c. Derate 6.6 mW/°C above 70 °C.

d. Manual soldering with iron is not recommended for leadless components. The miniQFN-16 is a leadless package. The end of the lead terminal is exposed copper (not plated) as a result of the singulation process in manufacturing. A solder fillet at the exposed copper lip cannot be guaranteed and is not required to ensure adequate bottom side solder interconnection.

SPECIFICATIONS FOR UNIPOLAR SUPPLIES									
Parameter	Symbol	Test Conditions Unless Otherwise Specified V _{CC} = + 12 V, V _L = 2.7 V V _{IN(A, B, C and enable)} = 1.6 V, 0.5 V ^a	Temp. ^b	Typ. ^c	- 40 °C to + 125 °C		- 40 °C to + 85 °C		Unit
					Min. ^d	Max. ^d	Min. ^d	Max. ^d	
Analog Switch									
Analog Signal Range ^e	V _{ANALOG}		Full		0	12	0	12	V
On-Resistance	R _{DS(on)}	I _S = 1 mA, V _D = 0.7 V, 6.0 V, 11.3 V	Room Full	80		120 143		120 137	Ω
On-Resistance Match	ΔR _{ON}	I _S = 1 mA, V _D = + 0.7 V	Room Full	4		7 10		7 8	
On-Resistance Flatness	R _{FLATNESS}	I _S = 1 mA, V _D = 0.7 V, 6.0 V, 11.3 V	Room Full	32		26 30		26 28	


DG9454

Vishay Siliconix

SPECIFICATIONS FOR UNIPOLAR SUPPLIES									
Parameter	Symbol	Test Conditions Unless Otherwise Specified $V_{CC} = +12\text{ V}$, $V_L = 2.7\text{ V}$ $V_{IN(A, B, C \text{ and enable})} = 1.6\text{ V}$, 0.5 V^a	Temp. ^b	Typ. ^c	-40 °C to +125 °C		-40 °C to +85 °C		Unit
					Min. ^d	Max. ^d	Min. ^d	Max. ^d	
Analog Switch									
Switch Off Leakage Current	$I_{S(off)}$	$V_+ = +13.2\text{ V}$, $V_L = 2.7\text{ V}$	Room Full	± 0.02	-1 -50	1 50	-1 -5	1 5	nA
	$I_{D(off)}$	$V_D = 1\text{ V}/12.2\text{ V}$, $V_S = 12.2\text{ V}/1\text{ V}$	Room Full	± 0.02	-1 -50	1 50	-1 -5	1 5	
Channel On Leakage Current	$I_{D(on)}$	$V_+ = +13.2\text{ V}$, $V_L = 2.7\text{ V}$ $V_D = V_S = 1\text{ V}/12.2\text{ V}$	Room Full	± 0.02	-1 -50	1 50	-1 -5	1 5	
Digital Control									
Logic Low Input Voltage	V_{INL}	$V_L = 2.7\text{ V}$	Full			0.5		0.5	V
Logic High Input Voltage	V_{INH}		Full		1.6		1.6		
Logic Low Input Current	I_L	V_{IN} A0, A1, A2 and enable under test = 0.5 V	Full	0.01	-1	1	-1	1	μA
Logic High Input current	I_H	V_{IN} A0, A1, A2 and enable above test = 1.6 V	Full	0.01	-1	1	-1	1	
Dynamic Characteristics									
Transition Time	t_{TRANS}	$R_L = 300\ \Omega$, $C_L = 35\text{ pF}$ see figure 1, 2, 3	Room Full	80		135 205		135 170	ns
Enable Turn-On Time	$t_{ON(EN)}$		Room Full	115		180 250		180 215	
Enable Turn-Off Time	$t_{OFF(EN)}$		Room Full	46		110 180		110 145	
Break-Before-Make Time Delay	t_D		Room Full	37	12		12		
Charge Injection ^e	Q	$C_L = 1\text{ nF}$, $R_{GEN} = 0\ \Omega$, $V_{GEN} = 0\text{ V}$	Full	0.86					pC
Off Isolation ^e	OIRR	$f = 1\text{ MHz}$, $R_L = 50\ \Omega$, $C_L = 5\text{ pF}$	100 kHz	Room	< -90				dB
			1 MHz	Room	-80				
10 MHz	Room		-61						
Crosstalk ^e	X_{TALK}		100 kHz	Room	< -90				
			1 MHz	Room	-81				
			10 MHz	Room	-65				
Bandwidth, -3dB ^e	BW	$R_L = 50\ \Omega$	Room	540				MHz	
Source Off Capacitance ^e	$C_{S(off)}$	$f = 1\text{ MHz}$	Room	2				pF	
Drain Off Capacitance ^e	$C_{D(off)}$		Room	3					
Channel On Capacitance ^e	$C_{D(on)}$		Room	6					
Total Harmonic Distortion ^e	THD	Signal = 1 V_{RMS} , 20 Hz to 20 kHz, $R_L = 600\ \Omega$	Room	0.01					%
Power Supply									
Power Supply Range	I_+	$V_{IN(A, B, C \text{ and enable})} = 0\text{ V}$ or $+12\text{ V}$	Room Full	0.05		1 10		1 10	μA
Ground Current	I_{GND}		Room Full	0.05	-1 -10		-1 -10		
Logic Supply Current	I_L	$V_L = 2.7\text{ V}$	Room Full	0.05		1 10		1 10	

Notes:

 a. V_{IN} = input voltage to perform proper function.

b. Room - 25 °C, Full = as determined by the operating temperature suffix.

c. Typical values are for DESIGN AID ONLY, not guaranteed nor subject to production testing.

d. The algebraic convention whereby the most negative value is a minimum and the most positive a maximum, is used in this data sheet.

e. Guaranteed by design, not subject to production test.

DG9454

Vishay Siliconix



SPECIFICATIONS FOR UNIPOLAR SUPPLIES									
Parameter	Symbol	Test Conditions Unless Otherwise Specified $V_{CC} = +5\text{ V}$, $V_L = 2.7\text{ V}$ $V_{IN(A, B, C \text{ and enable})} = 1.5\text{ V}$, 0.6 V^a	Temp. ^b	Typ. ^c	-40 °C to +125 °C		-40 °C to +85 °C		Unit
					Min. ^d	Max. ^d	Min. ^d	Max. ^d	
Analog Switch									
Analog Signal Range ^e	V_{ANALOG}		Full		0	5	0	5	V
On-Resistance	R_{ON}	$I_S = 1\text{ mA}$, $V_D = 0\text{ V}$, $+3.5\text{ V}$	Room Full	105		165 205		165 194	Ω
On-Resistance Match	ΔR_{ON}	$I_S = 1\text{ mA}$, $V_D = +3.5\text{ V}$	Room Full	3.2		8 13		8 10	
On-Resistance Flatness	$R_{FLATNESS}$	$I_S = 1\text{ mA}$, $V_D = 0\text{ V}$, $+3\text{ V}$	Room Full	17		26 30		26 28	
Switch Off Leakage Current	$I_{S(off)}$	$V_+ = +5.5\text{ V}$, $V_- = 0\text{ V}$ $V_D = 1\text{ V}/4.5\text{ V}$, $V_S = 4.5\text{ V}/1\text{ V}$	Room Full	± 0.02	-1 -50	1 50	-1 -5	1 5	nA
	$I_{D(off)}$		Room Full	± 0.02	-1 -50	1 50	-1 -5	1 5	
Channel On Leakage Current	$I_{D(on)}$	$V_+ = +5.5\text{ V}$, $V_- = 0\text{ V}$ $V_D = V_S = 1\text{ V}/4.5\text{ V}$	Room Full	± 0.02	-1 -50	1 50	-1 -5	1 5	
Digital Control									
$V_{IN(A, B, C \text{ and enable})}$ Low	V_{IL}	$V_L = 2.7\text{ V}$	Full			0.6		0.6	V
$V_{IN(A, B, C \text{ and enable})}$ High	V_{IH}	$V_L = 2.7\text{ V}$	Full		1.5		1.5		
Input Current, V_{IN} Low	I_L	$V_{IN(A, B, C \text{ and enable})}$ under test = 0.6 V	Full	0.01	-1	1	-1	1	μA
Input Current, V_{IN} High	I_H	$V_{IN(A, B, C \text{ and enable})}$ under test = 1.5 V	Full	0.01	-1	1	-1	1	
Dynamic Characteristics									
Transition Time	t_{TRANS}	$R_L = 300\ \Omega$, $C_L = 35\text{ pF}$ see figure 1, 2, 3	Room Full	96		175 250		175 210	ns
Enable Turn-On Time	t_{ON}		Room Full	200		295 365		295 330	
Enable Turn-Off Time	t_{OFF}		Room Full	60		155 225		155 190	
Break-Before-Make Time Delay	t_D		Room Full	50	20		20		
Charge Injection ^e	Q	$V_g = 0\text{ V}$, $R_g = 0\ \Omega$, $C_L = 1\text{ nF}$	Full	0.4					pC
Off Isolation ^e	OIRR	$R_L = 50\ \Omega$, $C_L = 5\text{ pF}$ $f = 100\text{ kHz}$	Room	< -90					dB
Channel-to-Channel Crosstalk ^e	X_{TALK}		Room	< -90					
Source Off Capacitance ^e	$C_{S(off)}$	$f = 1\text{ MHz}$	Room	2					pF
Drain Off Capacitance ^e	$C_{D(off)}$		Room	4					
Channel On Capacitance ^e	$C_{D(on)}$		Room	7					
Power Supply									
Power Supply Current	I_+	$V_{IN(A, B, C \text{ and enable})} = 0\text{ V}$ or 5 V	Room Full	0.05		1 10		1 10	μA
Ground Current	I_{GND}		Room Full	-0.05	-1 -10		-1 -10		
Logic Supply Current	I_L	$V_L = 2.7\text{ V}$	Room Full	0.05		1 10		1 10	

Notes:

 a. V_{IN} = input voltage to perform proper function.

b. Room - 25 °C, Full = as determined by the operating temperature suffix.

c. Typical values are for DESIGN AID ONLY, not guaranteed nor subject to production testing.

d. The algebraic convention whereby the most negative value is a minimum and the most positive a maximum, is used in this data sheet.

e. Guaranteed by design, not subject to production test.


DG9454

Vishay Siliconix

SPECIFICATIONS FOR UNIPOLAR SUPPLIES									
Parameter	Symbol	Test Conditions Unless Otherwise Specified $V_{CC} = +3\text{ V}$, $V_L = 2.7\text{ V}$ $V_{IN(A, B, C \text{ and enable})} = 1.5\text{ V}$, 0.6 V^a	Temp. ^b	Typ. ^c	-40 °C to +125 °C		-40 °C to +85 °C		Unit
					Min. ^d	Max. ^d	Min. ^d	Max. ^d	
Analog Switch									
Analog Signal Range ^e	V_{ANALOG}		Full		0	3	0	3	V
On-Resistance	$R_{DS(on)}$	$I_S = 1\text{ mA}$, $V_D = 1.5\text{ V}$	Room Full	171		265 310		265 289	Ω
Switch Off Leakage Current	$I_{S(off)}$	$V_+ = 3.3\text{ V}$, $V_L = 2.7\text{ V}$ $V_D = 0.3\text{ V}/3.0\text{ V}$, $V_S = 3.0\text{ V}/0.3\text{ V}$	Room Full	± 0.02	-1 -50	1 50	-1 -5	1 5	nA
	$I_{D(off)}$		Room Full	± 0.02	-1 -50	1 50	-1 -5	1 5	
Channel On Leakage Current	$I_{D(on)}$	$V_+ = 3.3\text{ V}$, $V_L = 2.7\text{ V}$ $V_S = V_D = 0.3\text{ V}/3.0\text{ V}$	Room Full	± 0.02	-1 -50	1 50	-1 -5	1 5	
Digital Control									
Logic Low Input Voltage	V_{INL}	$V_L = +2.7\text{ V}$	Full			0.6		0.6	V
Logic High Input Voltage	V_{INH}		Full		1.5		1.5		
Logic Low Input Current	I_L	$V_{IN} A0, A1, A2$ and enable under test = 0.6 V	Full	0.01	-1	1	-1	1	μA
Logic High Input Current	I_H	$V_{IN} A0, A1, A2$ and enable above test = 1.5 V	Full	0.01	-1	1	-1	1	
Dynamic Characteristics									
Transition Time	t_{TRANS}	$R_L = 300\ \Omega$, $C_L = 35\text{ pF}$ see figure 1, 2, 3	Room Full	151		270 355		270 315	ns
Enable Turn-On Time	$t_{ON(EN)}$		Room Full	390		510 610		510 565	
Enable Turn-Off Time	$t_{OFF(EN)}$		Room Full	90		220 320		220 275	
Break-Before-Make Time Delay	t_D		Room Full	90	35		35		
Charge Injection ^e	Q	$C_L = 1\text{ nF}$, $R_{GEN} = 0\ \Omega$, $V_{GEN} = 0\text{ V}$	Full	0.5					pC
Off Isolation ^e	OIRR	$f = 1\text{ MHz}$, $R_L = 50\ \Omega$, $C_L = 5\text{ pF}$	Room	< -90					dB
Crosstalk ^e	X_{TALK}		Room	< -90					
Source Off Capacitance ^e	$C_{S(off)}$	$f = 1\text{ MHz}$	Room	2					pF
Drain Off Capacitance ^e	$C_{D(off)}$		Room	4					
Channel On Capacitance ^e	$C_{D(on)}$		Room	7					
Power Supply									
Power Supply Range	I_+	$V_{IN(A, B, C \text{ and enable})} = 0\text{ V}$ or $+3\text{ V}$	Room Full	0.05		1 10		1 10	μA
Ground Current	I_{GND}		Room Full	0.05	-1 -10		-1 -10		
Logic Supply Current	I_L	$V_L = 2.7\text{ V}$	Room Full	0.05		1 10		1 10	

Notes:

- V_{IN} = input voltage to perform proper function.
- Room - 25 °C, Full = as determined by the operating temperature suffix.
- Typical values are for DESIGN AID ONLY, not guaranteed nor subject to production testing.
- The algebraic convention whereby the most negative value is a minimum and the most positive a maximum, is used in this data sheet.
- Guaranteed by design, not subject to production test.

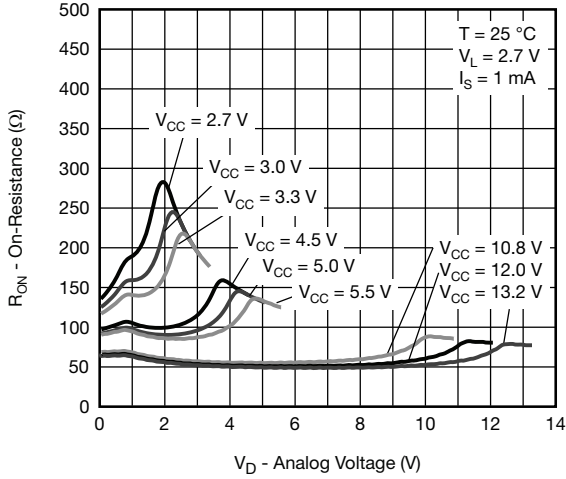
Stresses beyond those listed under "Absolute Maximum Ratings" may cause permanent damage to the device. These are stress ratings only, and functional operation of the device at these or any other conditions beyond those indicated in the operational sections of the specifications is not implied. Exposure to absolute maximum rating conditions for extended periods may affect device reliability.

DG9454

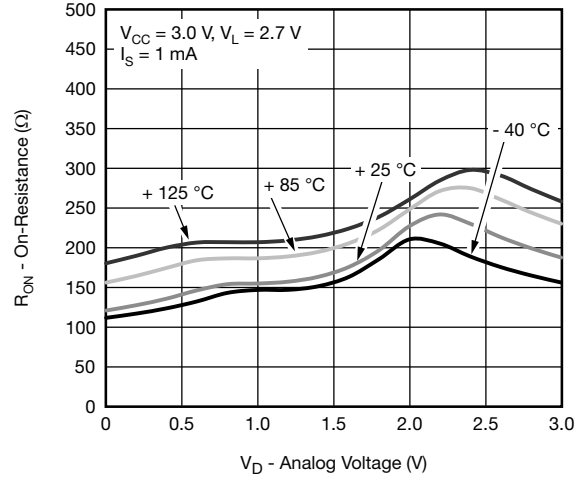
Vishay Siliconix



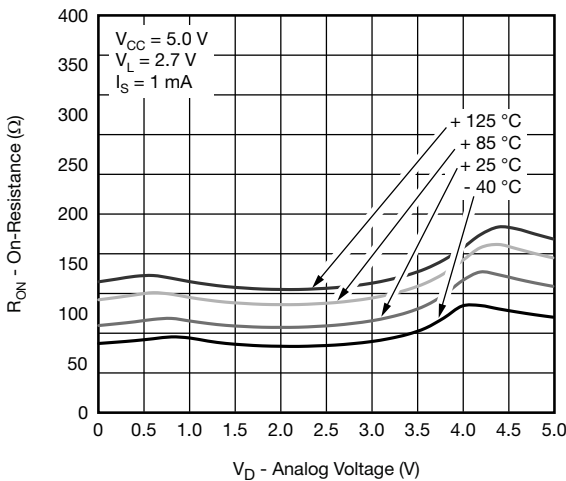
TYPICAL CHARACTERISTICS (25 °C, unless otherwise noted)



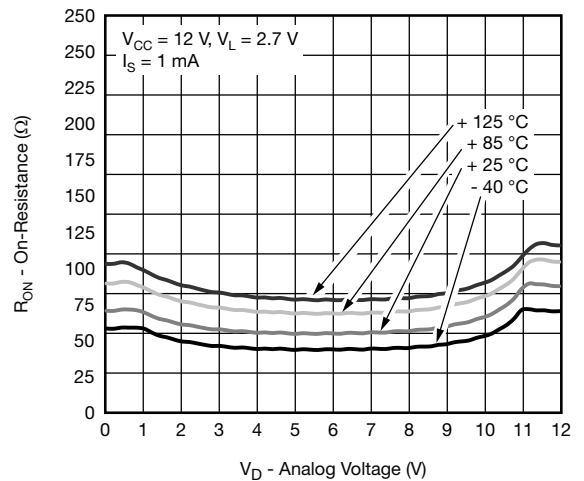
On-Resistance vs. V_D and Signal Supply Voltage



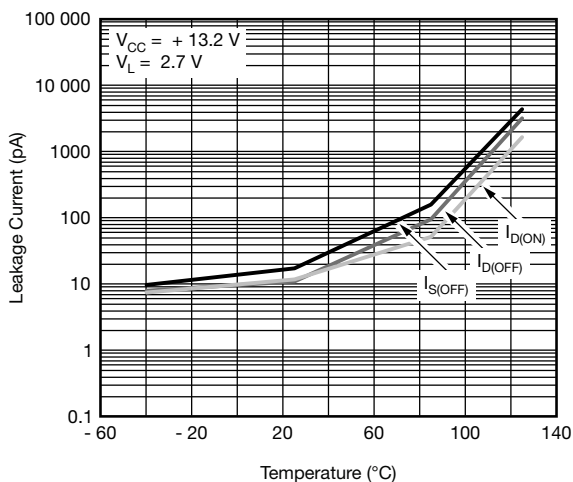
On-Resistance vs. Analog Voltage and Temperature



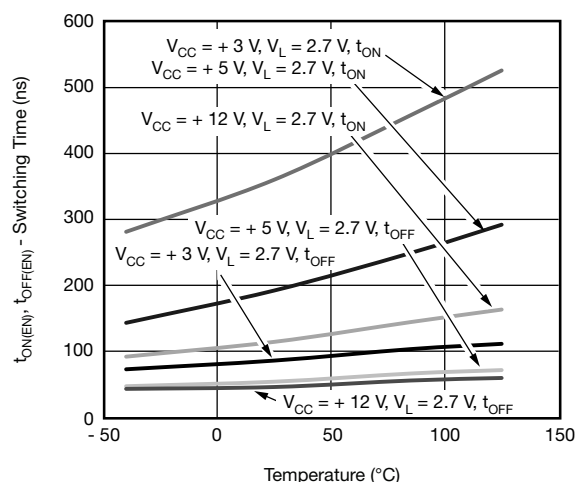
On-Resistance vs. Analog Voltage and Temperature



On-Resistance vs. Analog Voltage and Temperature



Leakage Current vs. Temperature



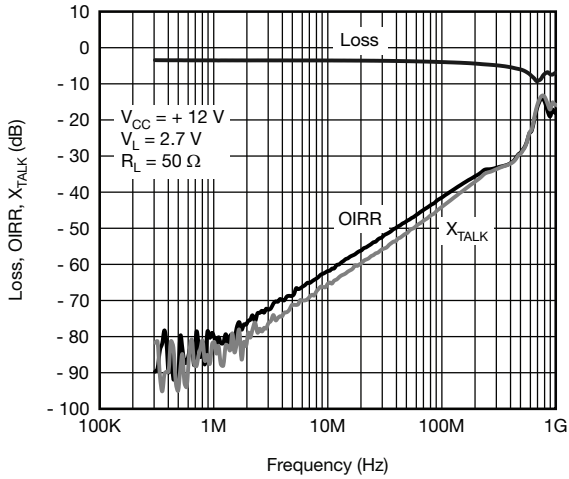
Switching Time vs. Temperature



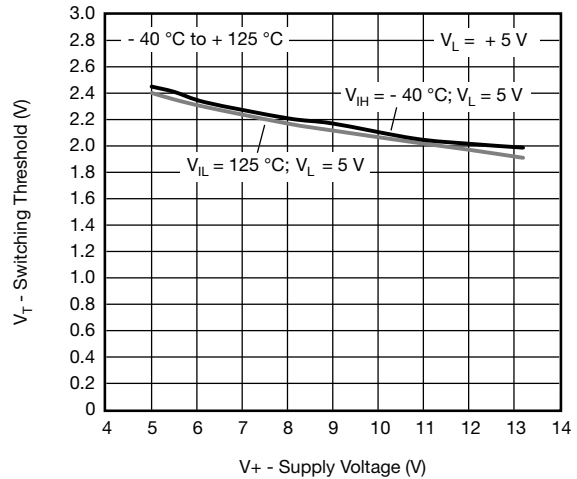
DG9454

Vishay Siliconix

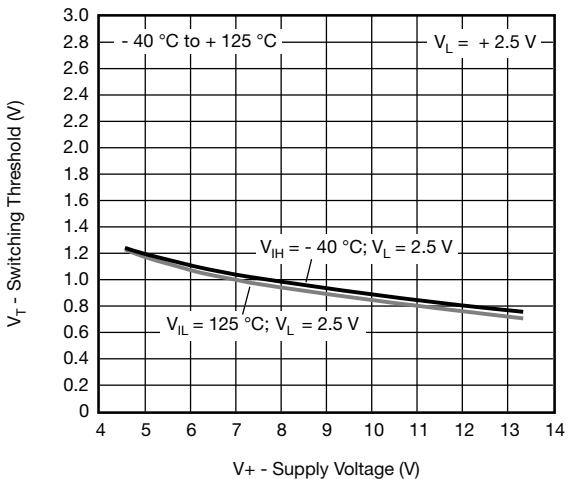
TYPICAL CHARACTERISTICS (25 °C, unless otherwise noted)



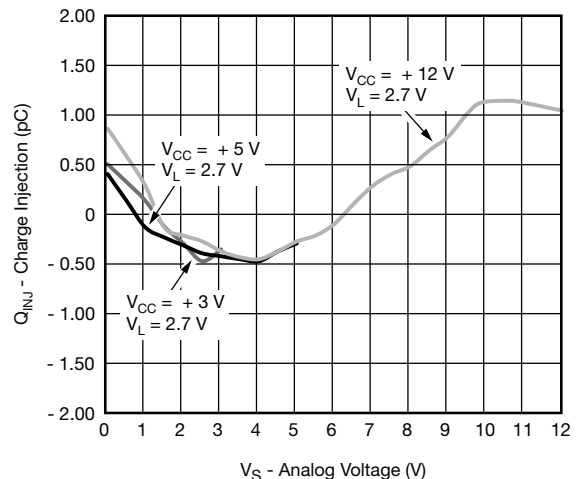
Insertion Loss, Off-Isolation, Crosstalk vs. Frequency



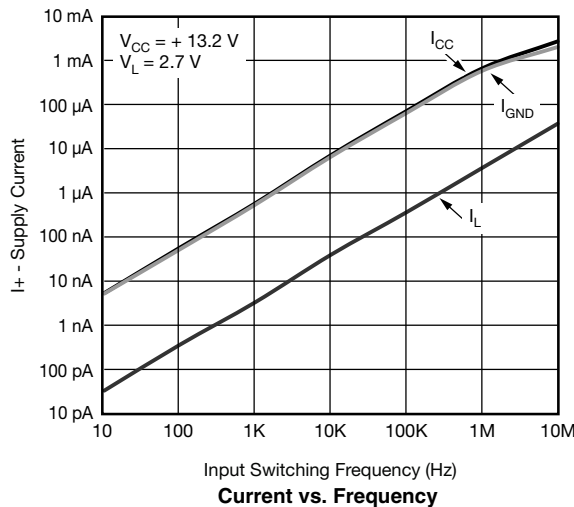
Switching Threshold vs. Logic Supply Voltage



Switching Threshold vs. Logic Supply Voltage



Charge Injection vs. Analog Voltage



Current vs. Frequency

DG9454

Vishay Siliconix



TEST CIRCUITS

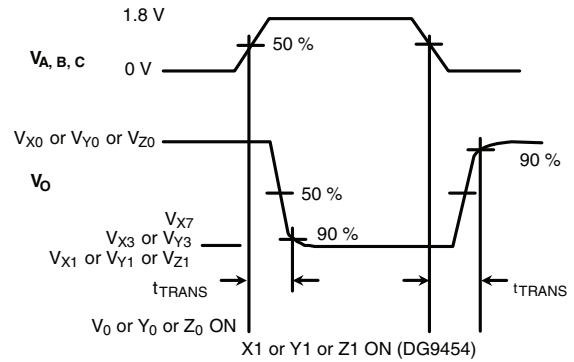
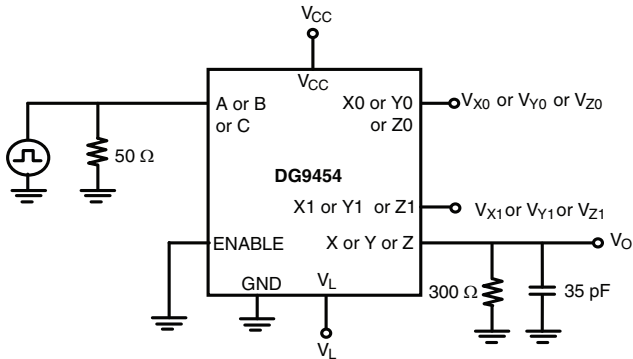


Figure 1. Transition Time

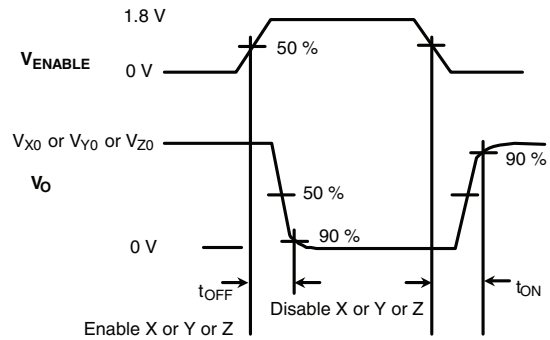
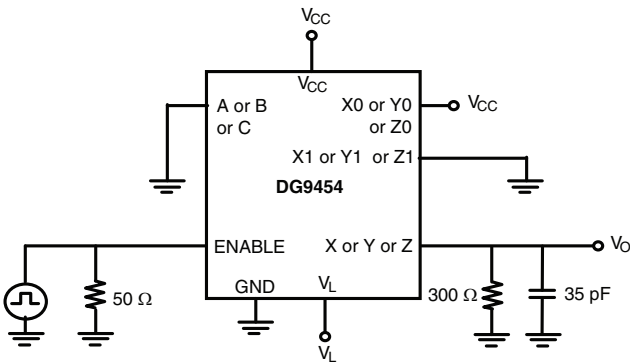


Figure 2. Enable Switching Time

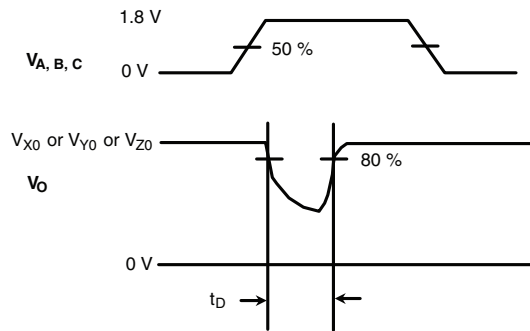
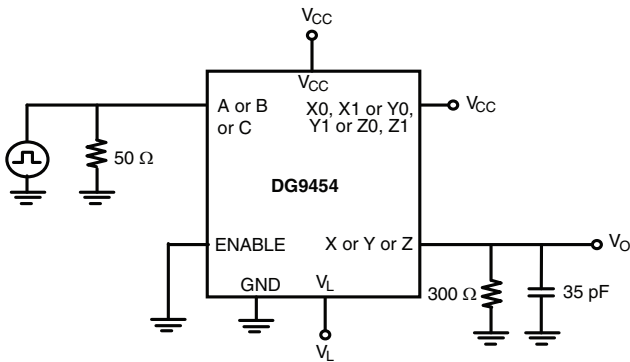


Figure 3. Break-Before-Make



TEST CIRCUITS

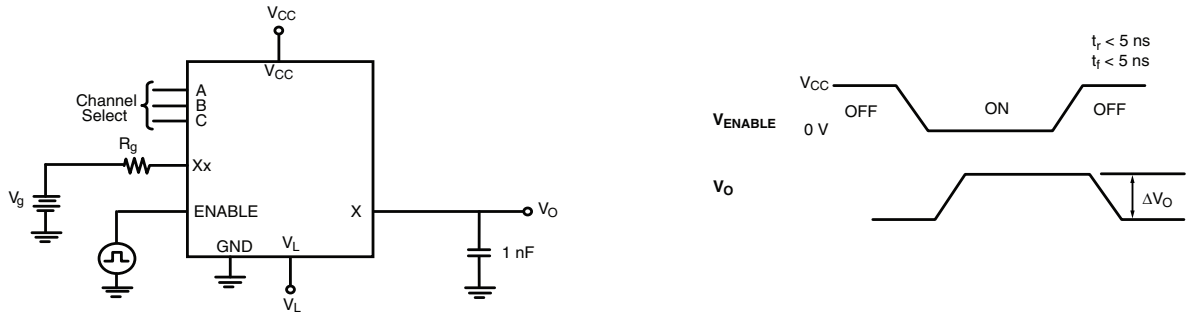


Figure 4. Charge Injection

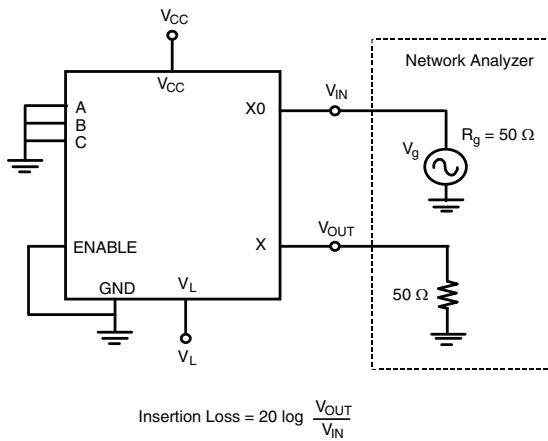


Figure 5. Insertion Loss

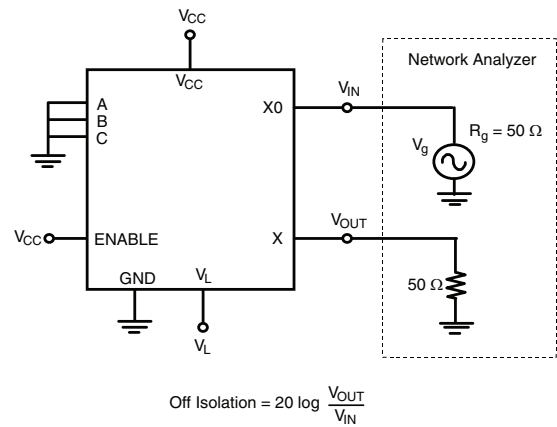


Figure 6. Off Isolation

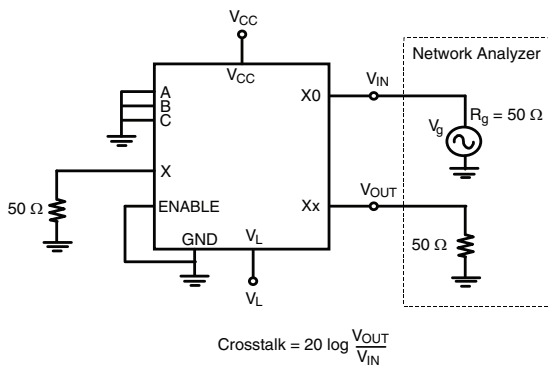


Figure 7. Crosstalk

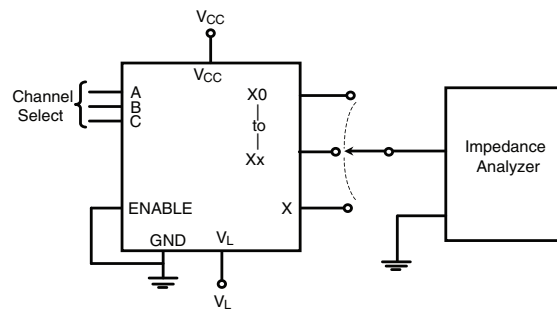


Figure 8. Source, Drain Capacitance

Vishay Siliconix maintains worldwide manufacturing capability. Products may be manufactured at one of several qualified locations. Reliability data for Silicon Technology and Package Reliability represent a composite of all qualified locations. For related documents such as package/tape drawings, part marking, and reliability data, see www.vishay.com/ppg?67185.

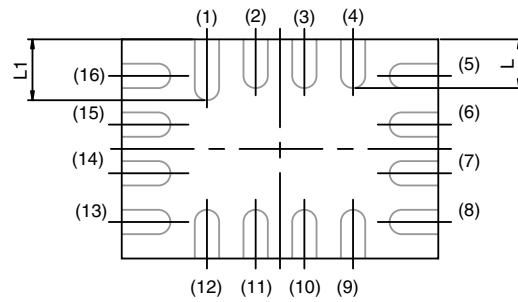
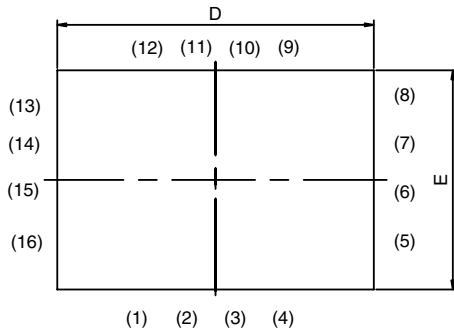


www.vishay.com

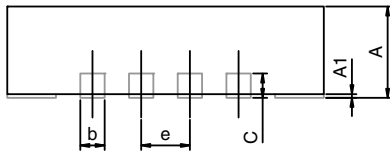
Package Information

Vishay Siliconix

miniQFN-16L



BACK SIDE VIEW



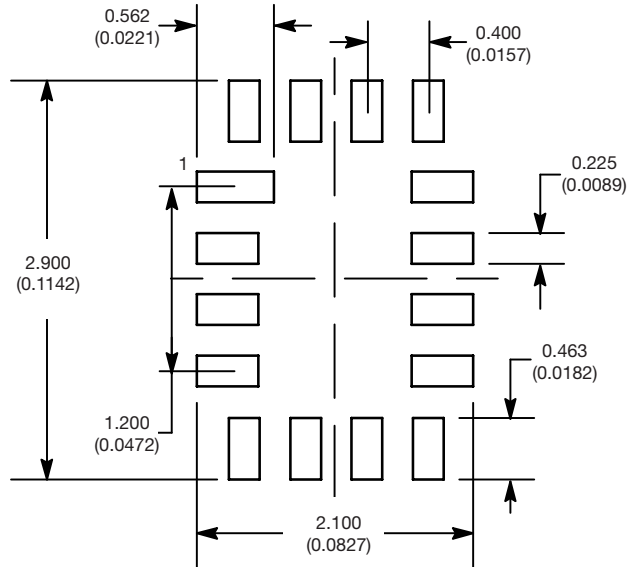
DIM	MILLIMETERS			INCHES		
	MIN.	NAM	MAX.	MIN.	NAM	MAX.
A	0.70	0.75	0.80	0.0275	0.0295	0.0315
A1	0	-	0.05	0	-	0.002
b	0.15	0.20	0.25	0.0059	0.0078	0.0098
C	0.15	0.20	0.25	0.0059	0.0078	0.0098
D	2.50	2.60	2.70	0.0984	0.1023	0.1063
E	1.70	1.80	1.90	0.0669	0.0708	0.0748
e	0.40 BSC			0.0157 BSC		
L	0.35	0.40	0.45	0.0137	0.0157	0.0177
L1	0.45	0.50	0.55	0.0177	0.0196	0.0216

ECN T16-0234-Rev. B, 09-May-16
 DWG: 5954



PAD Pattern
 Vishay Siliconix

RECOMMENDED MINIMUM PADS FOR MINI QFN 16L



Mounting Footprint
 Dimensions in mm (inch)



Disclaimer

ALL PRODUCT, PRODUCT SPECIFICATIONS AND DATA ARE SUBJECT TO CHANGE WITHOUT NOTICE TO IMPROVE RELIABILITY, FUNCTION OR DESIGN OR OTHERWISE.

Vishay Intertechnology, Inc., its affiliates, agents, and employees, and all persons acting on its or their behalf (collectively, "Vishay"), disclaim any and all liability for any errors, inaccuracies or incompleteness contained in any datasheet or in any other disclosure relating to any product.

Vishay makes no warranty, representation or guarantee regarding the suitability of the products for any particular purpose or the continuing production of any product. To the maximum extent permitted by applicable law, Vishay disclaims (i) any and all liability arising out of the application or use of any product, (ii) any and all liability, including without limitation special, consequential or incidental damages, and (iii) any and all implied warranties, including warranties of fitness for particular purpose, non-infringement and merchantability.

Statements regarding the suitability of products for certain types of applications are based on Vishay's knowledge of typical requirements that are often placed on Vishay products in generic applications. Such statements are not binding statements about the suitability of products for a particular application. It is the customer's responsibility to validate that a particular product with the properties described in the product specification is suitable for use in a particular application. Parameters provided in datasheets and / or specifications may vary in different applications and performance may vary over time. All operating parameters, including typical parameters, must be validated for each customer application by the customer's technical experts. Product specifications do not expand or otherwise modify Vishay's terms and conditions of purchase, including but not limited to the warranty expressed therein.

Except as expressly indicated in writing, Vishay products are not designed for use in medical, life-saving, or life-sustaining applications or for any other application in which the failure of the Vishay product could result in personal injury or death. Customers using or selling Vishay products not expressly indicated for use in such applications do so at their own risk. Please contact authorized Vishay personnel to obtain written terms and conditions regarding products designed for such applications.

No license, express or implied, by estoppel or otherwise, to any intellectual property rights is granted by this document or by any conduct of Vishay. Product names and markings noted herein may be trademarks of their respective owners.