

## Excellent Integrated System Limited

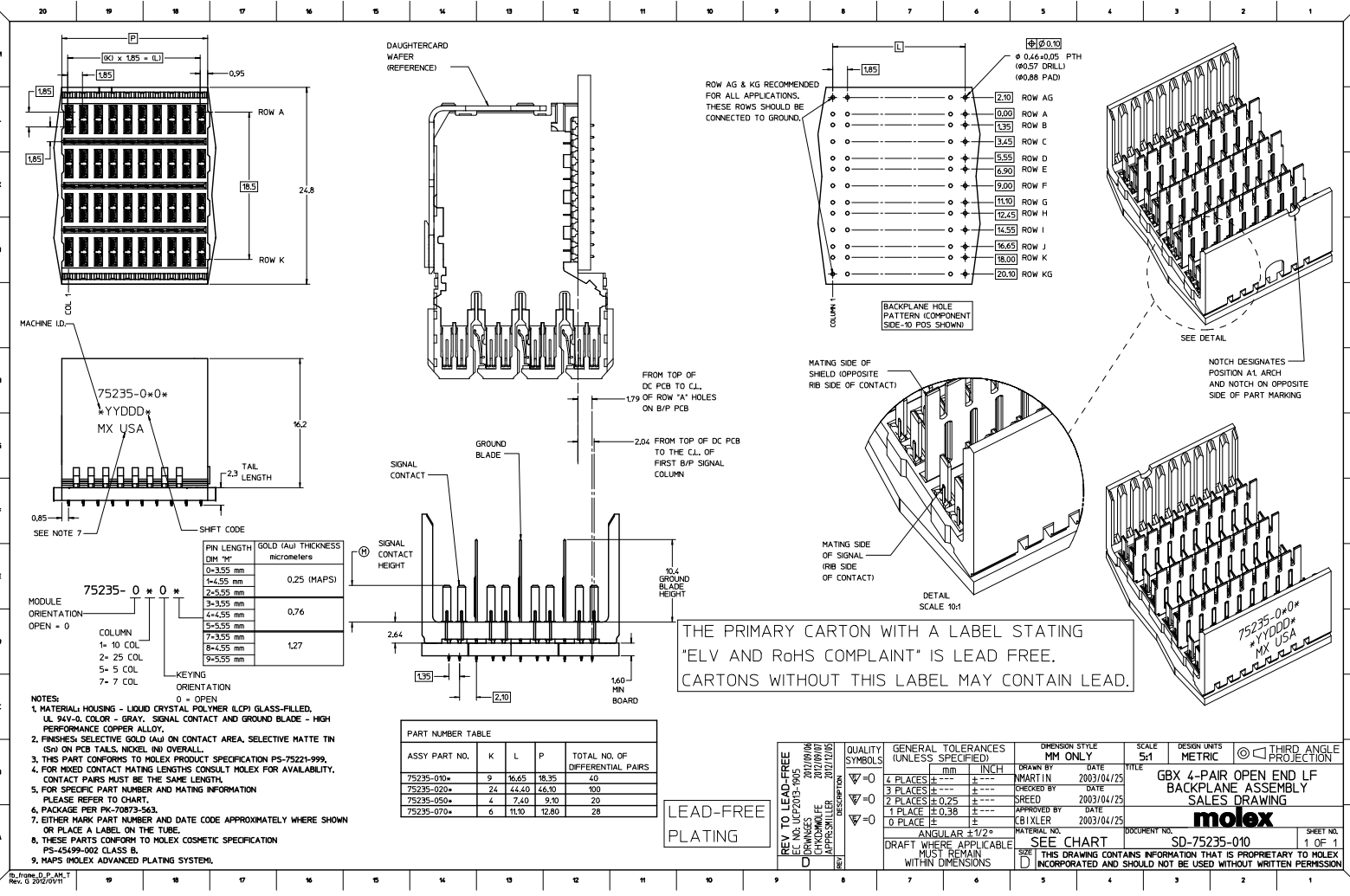
Stocking Distributor

Click to view price, real time Inventory, Delivery & Lifecycle Information:

[Molex Connector Corporation](#)  
[0752350203](#)

For any questions, you can email us directly:

[sales@integrated-circuit.com](mailto:sales@integrated-circuit.com)



| PIN LENGTH DIM "M" | GOLD (Au) THICKNESS micrometers |
|--------------------|---------------------------------|
| 0-355 mm           | 0.25 (MAPS)                     |
| 1-4.55 mm          |                                 |
| 2-555 mm           |                                 |
| 3-355 mm           | 0.76                            |
| 4-4.55 mm          |                                 |
| 5-555 mm           |                                 |
| 7-355 mm           |                                 |
| 8-4.55 mm          | 1.27                            |
| 9-555 mm           |                                 |

| PART NUMBER TABLE |    |       |       |                                 |
|-------------------|----|-------|-------|---------------------------------|
| ASSY PART NO.     | K  | L     | P     | TOTAL NO. OF DIFFERENTIAL PAIRS |
| 75235-010*        | 9  | 16.65 | 18.35 | 40                              |
| 75235-020*        | 24 | 44.40 | 46.30 | 100                             |
| 75235-050*        | 4  | 7.40  | 9.30  | 20                              |
| 75235-070*        | 6  | 11.0  | 12.80 | 28                              |

THE PRIMARY CARTON WITH A LABEL STATING "ELV AND RoHS COMPLAINT" IS LEAD FREE. CARTONS WITHOUT THIS LABEL MAY CONTAIN LEAD.

LEAD-FREE PLATING

| REV TO LEAD-FREE<br>EC NO. UFP203-045<br>DRAWINGS 207/09/06<br>CHECKED 207/09/07<br>APPROVED 207/07/05 | QUALITY SYMBOLS | GENERAL TOLERANCES (UNLESS SPECIFIED) |      | DIMENSION STYLE MM ONLY |            | SCALE 5:1   | DESIGN UNITS METRIC | THIRD ANGLE PROJECTION |
|--|-----------------|---------------------------------------|------|-------------------------|------------|---|---------------------|------------------------|
|  |                 | mm                                    | INCH | DRAWN BY                | DATE       |   |                     |                        |
| ∇=0  | 4 PLACES        | ±---                                  | ±--- | MARTIN                  | 2003/04/25 | GBX 4-PAIR OPEN END LF BACKPLANE ASSEMBLY SALES DRAWING   |                     |                        |
| ∇=0  | 3 PLACES        | ±---                                  | ±--- | CHECKED BY              | DATE       |   |                     |                        |
| ∇=0  | 2 PLACES        | ±0.25                                 | ±--- | SREED                   | 2003/04/25 |   |                     |                        |
| ∇=0  | 1 PLACE         | ±0.38                                 | ±--- | APPROVED BY             | DATE       |   |                     |                        |
|  | 0 PLACE         | ±                                     | ±    | CBIXLER                 | 2003/04/25 | <b>molex</b><br>DOCUMENT NO. SD-75235-010 SHEET NO. 1 OF 1  |                     |                        |
| DRAFT WHERE APPLICABLE MUST REMAIN WITHIN DIMENSIONS   |                 | ANGULAR ±1/2°                         |      | MATERIAL NO. SEE CHART  |            | THIS DRAWING CONTAINS INFORMATION THAT IS PROPRIETARY TO MOLEX INCORPORATED AND SHOULD NOT BE USED WITHOUT WRITTEN PERMISSION |                     |                        |