

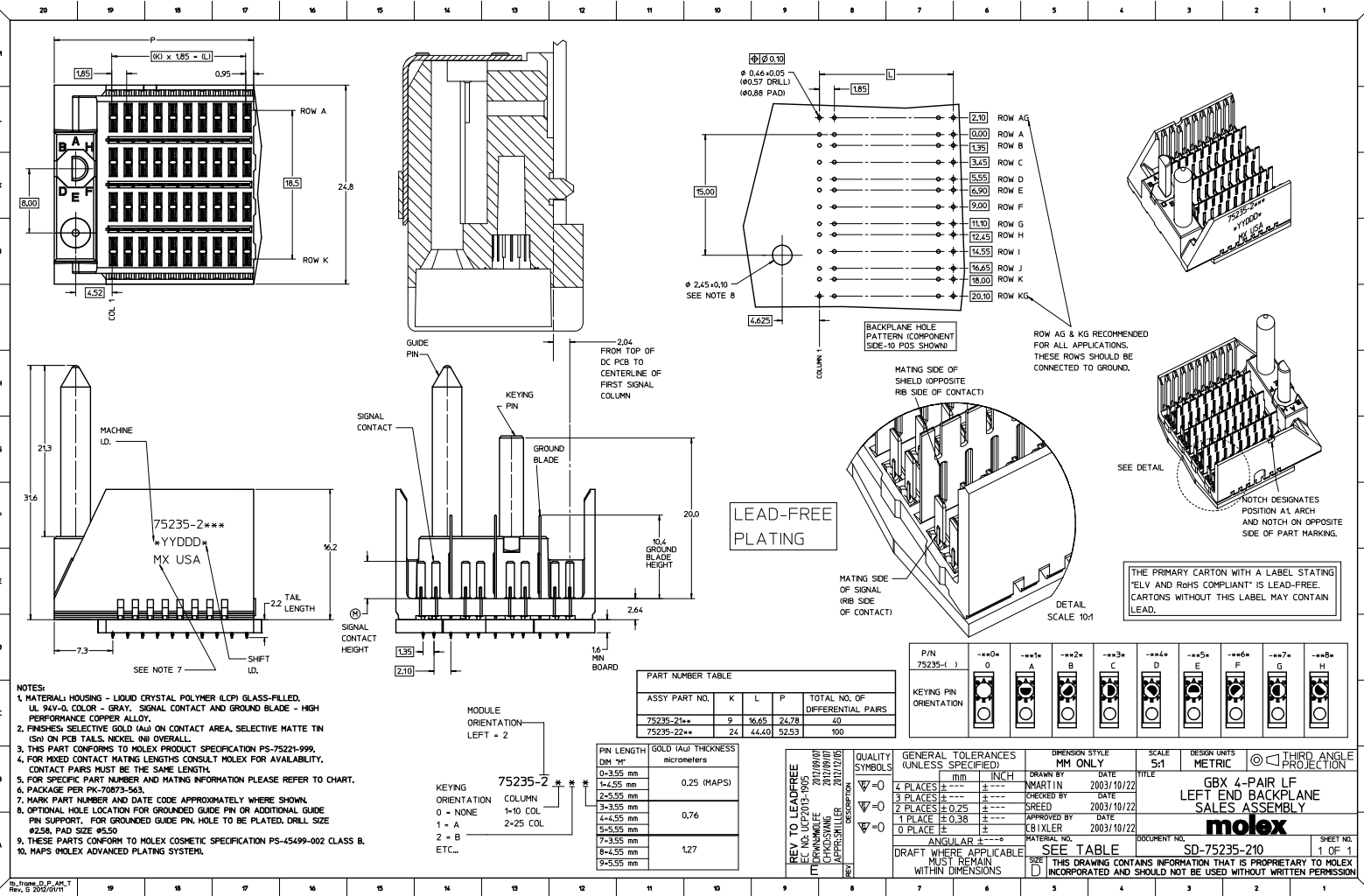
## Excellent Integrated System Limited

Stocking Distributor

Click to view price, real time Inventory, Delivery & Lifecycle Information:

[Molex Connector Corporation](#)  
[0752352179](#)

For any questions, you can email us directly:  
[sales@integrated-circuit.com](mailto:sales@integrated-circuit.com)



**NOTES:**  
 1. MATERIAL: HOUSING - LIQUID CRYSTAL POLYMER (LCP) GLASS-FILLED, UL 94V-0, COLOR - GRAY, SIGNAL CONTACT AND GROUND BLADE - HIGH PERFORMANCE COPPER ALLOY.  
 2. FINISHES: SELECTIVE GOLD (Au) ON CONTACT AREA, SELECTIVE MATTE TIN (Sn) ON PCB TAILS, NICKEL (Ni) OVERALL.  
 3. THIS PART CONFORMS TO MOLEX PRODUCT SPECIFICATION PS-75221-999.  
 4. FOR MIXED CONTACT MATING LENGTHS CONSULT MOLEX FOR AVAILABILITY, CONTACT PAIRS MUST BE THE SAME LENGTH.  
 5. FOR SPECIFIC PART NUMBER AND MATING INFORMATION PLEASE REFER TO CHART.  
 6. PACKAGE PER PK-70873-563.  
 7. MARK PART NUMBER AND DATE CODE APPROXIMATELY WHERE SHOWN.  
 8. OPTIONAL: HOLE LOCATION FOR GROUNDED GUIDE PIN OR ADDITIONAL GUIDE PIN SUPPORT, FOR GROUNDED GUIDE PIN, HOLE TO BE PLATED, DRILL SIZE #258, PAD SIZE #550.  
 9. THESE PARTS CONFORM TO MOLEX COSMETIC SPECIFICATION PS-45499-002 CLASS B.  
 10. MAPS: MOLEX ADVANCED PLATING SYSTEM.

PART NUMBER TABLE				
ASSY PART NO.	K	L	P	TOTAL NO. OF DIFFERENTIAL PAIRS
75235-21**	9	16.65	24.78	40
75235-22**	24	44.40	52.53	100

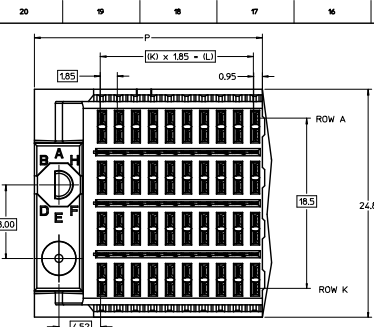
PIN LENGTH DIM "M"	GOLD (Au) THICKNESS micrometers
0-3.55 mm	
4-4.55 mm	0.25 (MAPS)
5-5.55 mm	
6-6.55 mm	0.76
7-7.55 mm	
8-8.55 mm	1.27
9-9.55 mm	

**REV TO LEAD-FREE**  
 EIC NO. UPTD 03-0405  
 DATE 2012/09/07  
 CHOWSHANG  
 APPROVED 2012/12/05  
 DATE

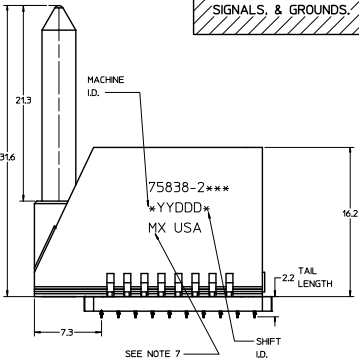
P/N	0	A	B	C	D	E	F	G	H
75235-1	0	A	B	C	D	E	F	G	H

QUALITY SYMBOLS	GENERAL TOLERANCES (UNLESS SPECIFIED)	DIMENSION STYLE	SCALE	DESIGN UNITS	THIRD ANGLE PROJECTION
∇=0	4 PLACES ±---	MM ONLY <td>5:1 <td>METRIC <td>☑</td> </td></td>	5:1 <td>METRIC <td>☑</td> </td>	METRIC <td>☑</td>	☑
∇=0	3 PLACES ±---				
∇=0	2 PLACES ±0.25				
∇=0	1 PLACE ±0.38				
∇=0	0 PLACE ±				

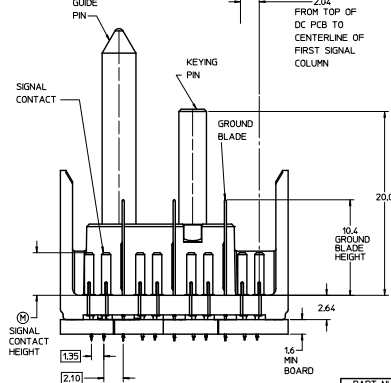
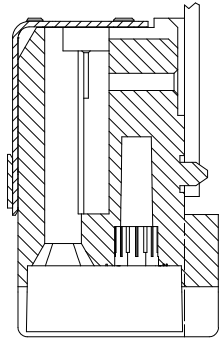
THE PRIMARY CARTON WITH A LABEL STATING "ELV AND RoHS COMPLIANT" IS LEAD-FREE. CARTONS WITHOUT THIS LABEL MAY CONTAIN LEAD.



LEAD-FREE  
PLATING ON  
SIGNALS, & GROUNDS.



- NOTES:
1. MATERIAL: HOUSING - LIQUID CRYSTAL POLYMER (LCP) GLASS-FILLED, UL 94V-0, COLOR - GRAY, SIGNAL CONTACT AND GROUND BLADE - HIGH PERFORMANCE COPPER ALLOY.
  2. FINISHES: SELECTIVE GOLD (Au) 0.25 (MAPS), 0.76, OR 1.27 micrometers THICKNESS ON CONTACT AREA, SELECTIVE MATTE TIN (Sn) ON PCB TAILS, NICKEL (Ni) OVERALL.
  3. THIS PART CONFORMS TO MOLEX PRODUCT SPECIFICATION PS-75231-999.
  4. FOR MIXED CONTACT MATING LENGTHS CONSULT MOLEX FOR AVAILABILITY, CONTACT Pairs MUST BE THE SAME LENGTH.
  5. FOR SPECIFIC PART NUMBER AND MATING INFORMATION PLEASE REFER TO CHART.
  6. PACKAGE PER PK-70873-563.
  7. EITHER MARK PART NUMBER AND DATE CODE APPROXIMATELY WHERE SHOWN OR PLACE A LABEL ON THE TUBE.
  8. OPTIONAL HOLE LOCATION FOR GROUNDED GUIDE PIN OR ADDITIONAL GUIDE PIN SUPPORT, FOR GROUNDED GUIDE PIN HOLE TO BE PLATED, DRILL SIZE #258, PAD SIZE #550.
  9. THESE PARTS CONFORM TO MOLEX COSMETIC SPECIFICATION PS-45499-02 CLASS B.

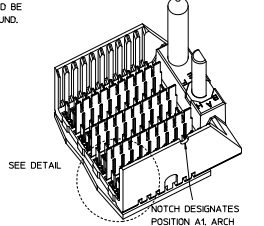
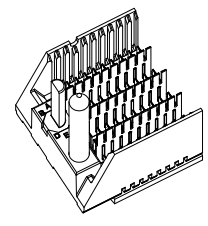
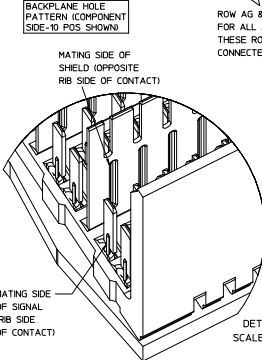
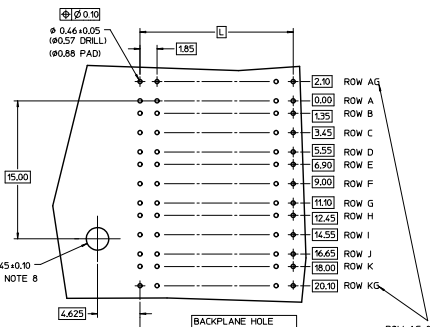


PART NUMBER TABLE				
ASSY PART NO.	K	L	P	TOTAL NO. OF DIFFERENTIAL PAIRS
75838-21**	9	16.65	24.78	40
75838-22**	24	44.40	52.53	100

PIN LENGTH	GOLD (Au) THICKNESS
DIM "M"	micrometers
0-3.55 mm	0.25
1-4.25 mm	
2-5.55 mm	
3-3.55 mm	0.76
4-4.55 mm	
7-3.55 mm	
8-4.55 mm	1.27
9-5.55 mm	

MODULE ORIENTATION LEFT = 2

KEYING ORIENTATION  
0 = NONE  
1 = A  
2 = B  
ETC.



NOTCH DESIGNATES POSITION A1 ARCH AND NOTCH ON OPPOSITE SIDE OF PART MARKING.

P/N	0	A	B	C	D	E	F	G	H
75838-( )	0	A	B	C	D	E	F	G	H

QUALITY SYMBOLS	GENERAL TOLERANCES (UNLESS SPECIFIED)	DIMENSION STYLE	SCALE	DESIGN UNITS	THIRD ANGLE PROJECTION
4 PLACES ±---+--- 3 PLACES ±---+--- 2 PLACES ±---+--- 1 PLACE ±---+--- 0 PLACE ±---+---	mm INCH ±---+--- ±---+--- ±---+--- ±---+---	MM ONLY	5:1	METRIC	THIRD ANGLE PROJECTION

ADD MAPS PLATING ECN 00102-3688 2007/05/16 CHOSMANVELLY 2007/05/16 APPROVALS

DRAFT WHERE APPLICABLE MUST REMAIN WITHIN DIMENSIONS

SEE TABLE

INCORPORATED AND SHOULD NOT BE USED WITHOUT WRITTEN PERMISSION

GBX 4-PAIR LEFT END BACKPLANE ASSEMBLY LEAD-FREE SALES DRAWING

**molex**

DOCUMENT NO. SD-75838-210

SHEET NO. 1 OF 1