

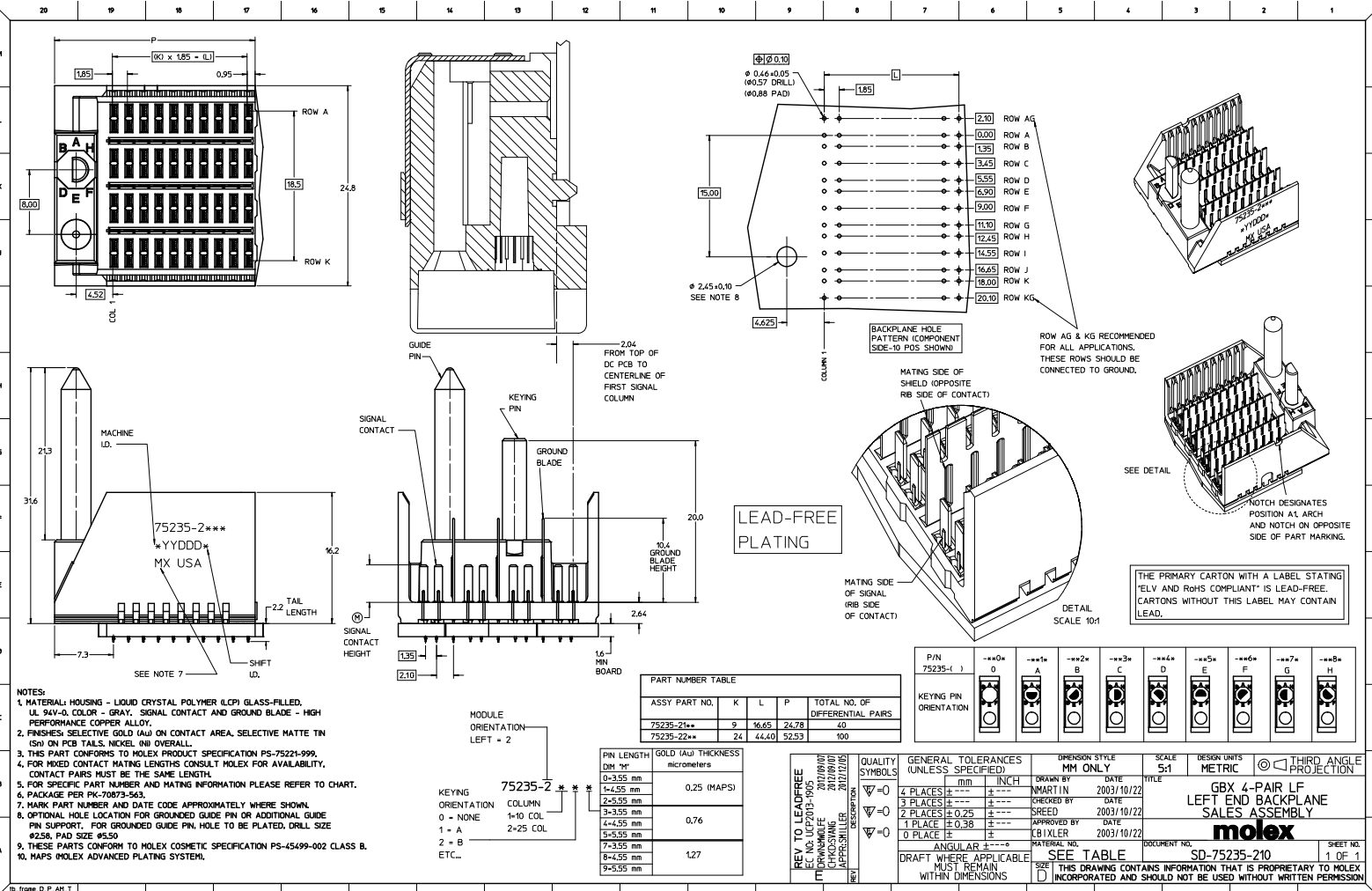
Excellent Integrated System Limited

Stocking Distributor

Click to view price, real time Inventory, Delivery & Lifecycle Information:

[Molex Connector Corporation](#)
[0752352223](#)

For any questions, you can email us directly:
sales@integrated-circuit.com



NOTES:
 1. MATERIAL: HOUSING - LIQUID CRYSTAL POLYMER (LCP) GLASS-FILLED, UL 94V-0, COLOR - GRAY, SIGNAL CONTACT AND GROUND BLADE - HIGH PERFORMANCE COPPER ALLOY.
 2. FINISHES: SELECTIVE GOLD (Au) ON CONTACT AREA, SELECTIVE MATTE TIN (Sn) ON PCB TAILS, NICKEL (Ni) OVERALL.
 3. THIS PART CONFORMS TO MOLEX PRODUCT SPECIFICATION PS-75221-999.
 4. FOR MIXED CONTACT MATING LENGTHS CONSULT MOLEX FOR AVAILABILITY, CONTACT PAIRS MUST BE THE SAME LENGTH.
 5. FOR SPECIFIC PART NUMBER AND MATING INFORMATION PLEASE REFER TO CHART.
 6. PACKAGE PER PK-70873-563.
 7. MARK PART NUMBER AND DATE CODE APPROXIMATELY WHERE SHOWN.
 8. OPTIONAL: HOLE LOCATION FOR GROUNDED GUIDE PIN OR ADDITIONAL GUIDE PIN SUPPORT, FOR GROUNDED GUIDE PIN, HOLE TO BE PLATED, DRILL SIZE #258, PAD SIZE #550.
 9. THESE PARTS CONFORM TO MOLEX COSMETIC SPECIFICATION PS-45499-002 CLASS B.
 10. MAPS: MOLEX ADVANCED PLATING SYSTEM.

PART NUMBER TABLE

ASSY PART NO.	K	L	P	TOTAL NO. OF DIFFERENTIAL PAIRS
75235-21**	9	16.65	24.78	40
75235-22**	24	44.40	52.53	100

PIN LENGTH DIM "M"	GOLD (Au) THICKNESS micrometers
0-3.55 mm	
3-4.55 mm	0.25 (MAPS)
4-5.55 mm	
5-6.55 mm	0.76
6-7.55 mm	
7-8.55 mm	1.27
8-9.55 mm	

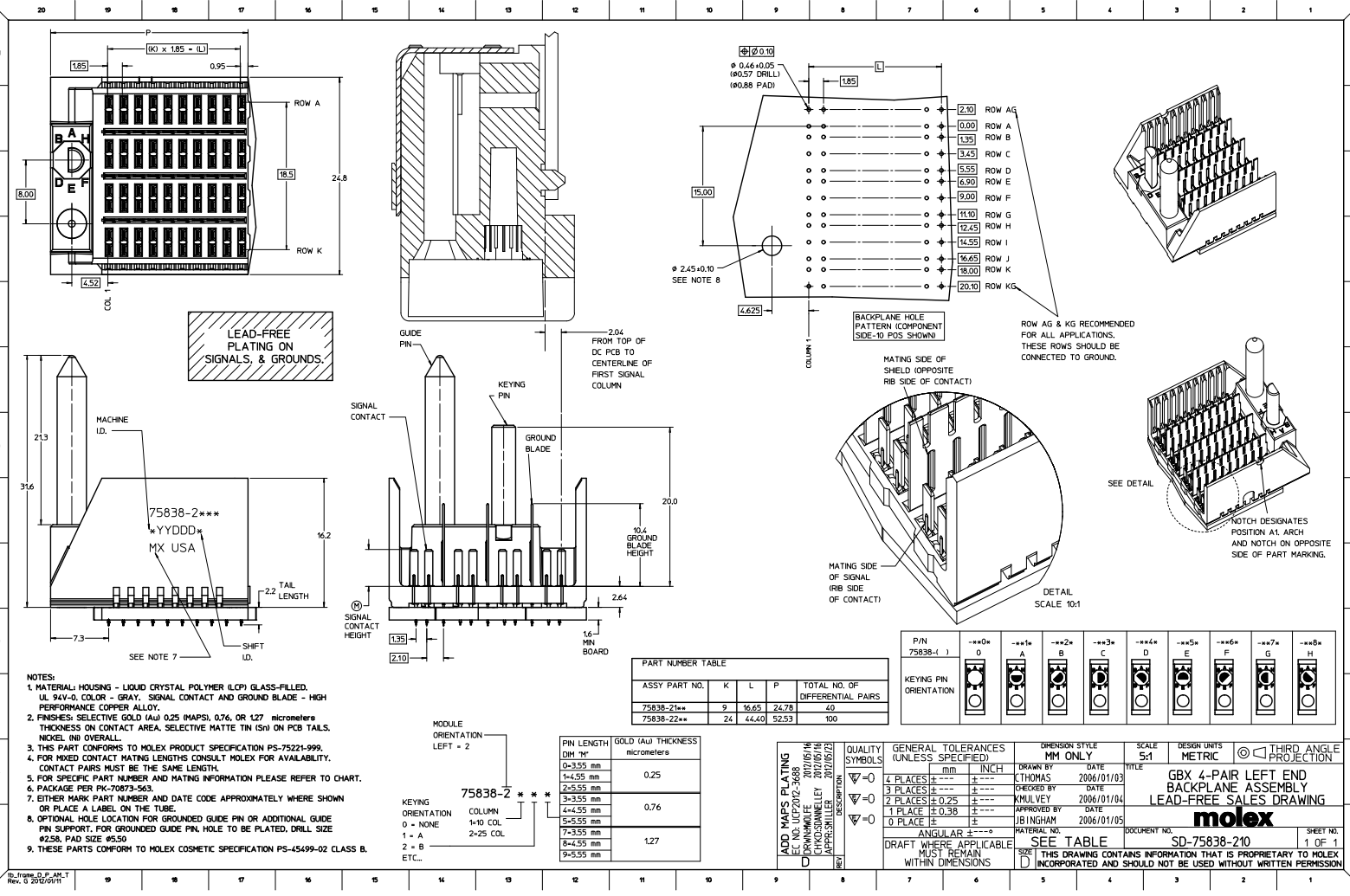
KEYING ORIENTATION

0 = NONE
 1 = A
 2 = B
 ETC...

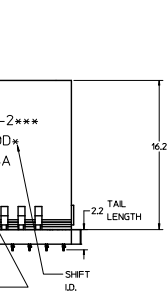
P/N	0	A	B	C	D	E	F	G	H
KEYING PIN ORIENTATION									

QUALITY SYMBOLS	GENERAL TOLERANCES (UNLESS SPECIFIED)	MM ONLY	INCH	DRAWN BY	DATE	TITLE
$\nabla=0$	4 PLACES ±---	±---	±---	MARTIN	2003/10/22	GBX 4-PAIR LF LEFT END BACKPLANE SALES ASSEMBLY
$\nabla=0$	3 PLACES ±---	±---	±---	SREED	2003/10/22	
$\nabla=0$	2 PLACES ±0.25	±---	±---	APPROVED BY	DATE	
$\nabla=0$	1 PLACE ±0.38	±---	±---	CBIXLER	2003/10/22	
	ANGULAR ±---	±---	±---			

THE PRIMARY CARTON WITH A LABEL STATING "ELV AND ROHS COMPLIANT" IS LEAD-FREE. CARTONS WITHOUT THIS LABEL MAY CONTAIN LEAD.



LEAD-FREE PLATING ON SIGNALS, & GROUNDS.



- NOTES:
1. MATERIAL: HOUSING - LIQUID CRYSTAL POLYMER (LCP) GLASS-FILLED, UL 94V-0, COLOR - GRAY, SIGNAL CONTACT AND GROUND BLADE - HIGH PERFORMANCE COPPER ALLOY.
 2. FINISHES: SELECTIVE GOLD (Au) 0.25 (MAPS), 0.76, OR 1.27 micrometers THICKNESS ON CONTACT AREA, SELECTIVE MATTE TIN (Sn) ON PCB TAILS, NICKEL (Ni) OVERALL.
 3. THIS PART CONFORMS TO MOLEX PRODUCT SPECIFICATION PS-75221-999.
 4. FOR MIXED CONTACT MATING LENGTHS CONSULT MOLEX FOR AVAILABILITY, CONTACT PAIRS MUST BE THE SAME LENGTH.
 5. FOR SPECIFIC PART NUMBER AND MATING INFORMATION PLEASE REFER TO CHART.
 6. PACKAGE PER PK-70873-563.
 7. EITHER MARK PART NUMBER AND DATE CODE APPROXIMATELY WHERE SHOWN OR PLACE A LABEL ON THE TUBE.
 8. OPTIONAL HOLE LOCATION FOR GROUNDED GUIDE PIN OR ADDITIONAL GUIDE PIN SUPPORT, FOR GROUNDED GUIDE PIN HOLE TO BE PLATED, DRILL SIZE #258, PAD SIZE #550.
 9. THESE PARTS CONFORM TO MOLEX COSMETIC SPECIFICATION PS-45499-02 CLASS B.

ASSY PART NO.	K	L	P	TOTAL NO. OF DIFFERENTIAL PAIRS
75838-21**	9	16.65	24.78	20
75838-22**	24	44.40	52.53	100

PIN LENGTH DIM "M"	GOLD (Au) THICKNESS micrometers
0-3.55 mm	0.25
1-4.25 mm	
2-5.55 mm	
3-3.55 mm	0.76
4-4.55 mm	
7-3.55 mm	
8-4.55 mm	1.27
9-5.55 mm	

ADD MAPS PLATING EC NO. ICP/2012-3688 DRAWN/DATE 20/05/16 CHKD/SANJEEVY 20/05/16 APPROVED/DATE 20/05/16

QUALITY SYMBOLS
 ∇=0
 ∇=0
 ∇=0

GENERAL TOLERANCES (UNLESS SPECIFIED)	MM	INCH
4 PLACES	±0.15	±0.006
3 PLACES	±0.25	±0.010
2 PLACES	±0.38	±0.015
1 PLACE	±0.51	±0.020
0 PLACES	±0.64	±0.025

OPERATION	DATE	TITLE
DRAWN BY	THOMAS	2006/10/03
CHECKED BY	DATE	
APPROVED BY	DATE	
APPROVED BY	DATE	

ANGULAR ±0.05

DRAFT WHERE APPLICABLE MUST REMAIN WITHIN DIMENSIONS

SEE TABLE

INCORPORATED AND SHOULD NOT BE USED WITHOUT WRITTEN PERMISSION

SCALE 5:1

DESIGN UNITS METRIC

THIRD ANGLE PROJECTION

DOCUMENT NO. SD-75838-210

SHEET NO. 1 OF 1

molex