

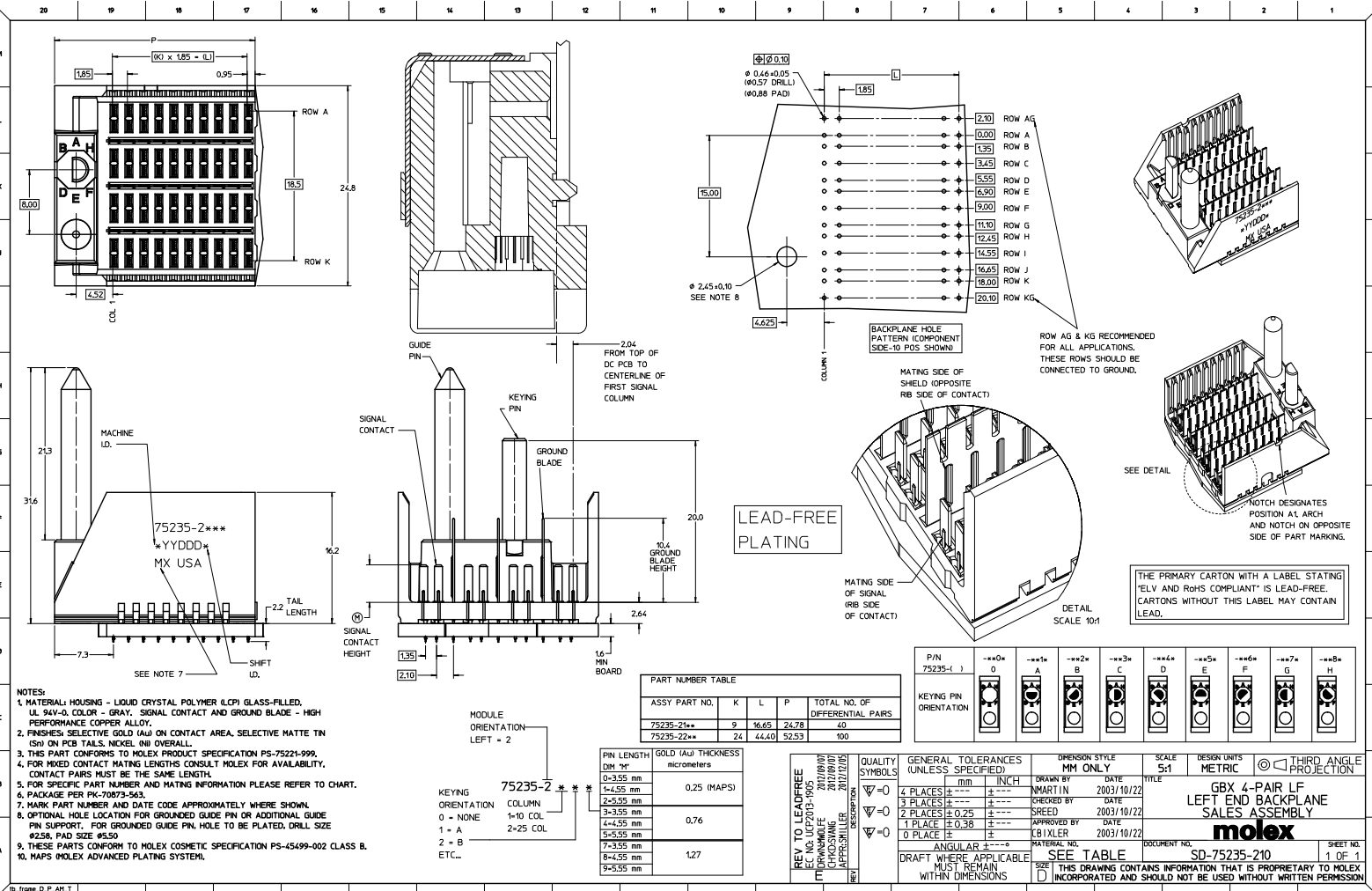
Excellent Integrated System Limited

Stocking Distributor

Click to view price, real time Inventory, Delivery & Lifecycle Information:

[Molex Connector Corporation](#)
[0752352228](#)

For any questions, you can email us directly:
sales@integrated-circuit.com

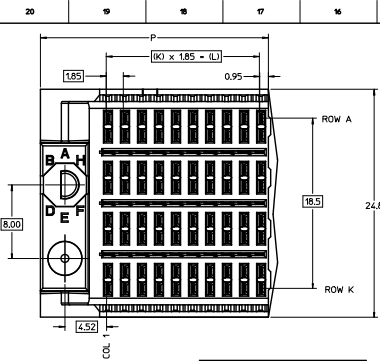


PART NUMBER TABLE				
ASSY PART NO.	K	L	P	TOTAL NO. OF DIFFERENTIAL PAIRS
75235-21**	9	16.65	24.78	40
75235-22**	24	44.40	52.53	100

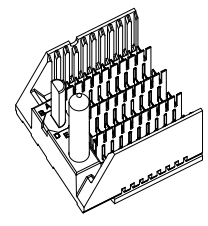
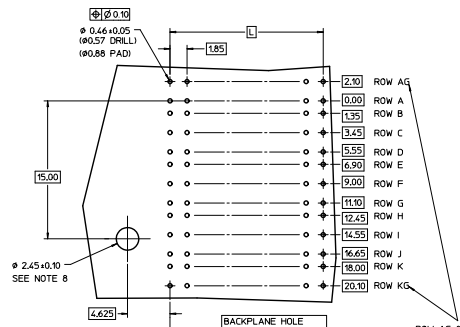
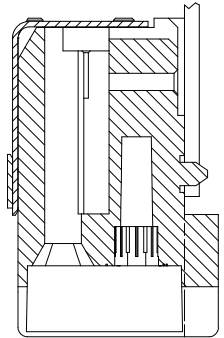
PIN LENGTH	GOLD (Au) THICKNESS
mm	micrometers
0-3.55 mm	0.25 (MAPS)
4-4.55 mm	0.25
5-5.55 mm	0.76
7-7.55 mm	1.27
8-8.55 mm	
9-9.55 mm	

P/N	0	A	B	C	D	E	F	G	H
75235-1	0	A	B	C	D	E	F	G	H

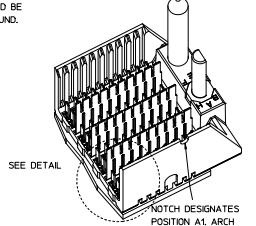
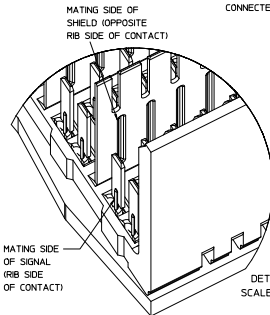
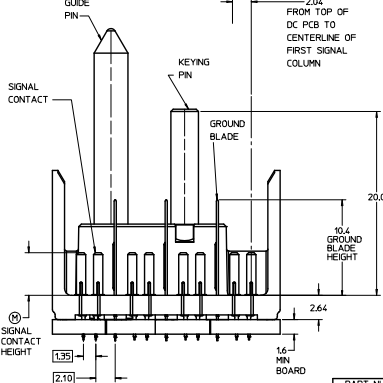
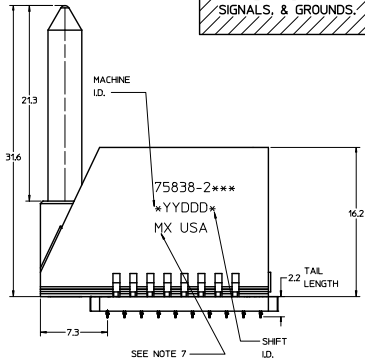
QUALITY SYMBOLS	GENERAL TOLERANCES (UNLESS SPECIFIED)		DIMENSION STYLE		SCALE	DESIGN UNITS	THIRD ANGLE PROJECTION
	mm	INCH	MM ONLY	INCH			
∇=0	4 PLACES ±---	±---	MARTIN	2003/10/22	5:1	METRIC	
∇=0	3 PLACES ±---	±---	SREED	2003/10/22			
∇=0	1 PLACE ±0.38	±---	CBIXLER	2003/10/22			
DRAFT WHERE APPLICABLE MUST REMAIN WITHIN DIMENSIONS		SEE TABLE		DOCUMENT NO.		molex SD-75235-210 SHEET NO. 1 OF 1	



LEAD-FREE
PLATING ON
SIGNALS, & GROUNDS.



ROW AG & KG RECOMMENDED FOR ALL APPLICATIONS. THESE ROWS SHOULD BE CONNECTED TO GROUND.



NOTCH DESIGNATES POSITION A1 ARCH AND NOTCH ON OPPOSITE SIDE OF PART MARKING.

- NOTES:
1. MATERIAL: HOUSING - LIQUID CRYSTAL POLYMER (LCP) GLASS-FILLED, UL 94V-0, COLOR - GRAY, SIGNAL CONTACT AND GROUND BLADE - HIGH PERFORMANCE COPPER ALLOY.
 2. FINISHES: SELECTIVE GOLD (Au) 0.25 (MAPS), 0.76, OR 1.27 micrometers THICKNESS ON CONTACT AREA, SELECTIVE MATTE TIN (Sn) ON PCB TAILS, NICKEL (Ni) OVERALL.
 3. THIS PART CONFORMS TO MOLEX PRODUCT SPECIFICATION PS-75221-999.
 4. FOR MIXED CONTACT MATING LENGTHS CONSULT MOLEX FOR AVAILABILITY, CONTACT Pairs MUST BE THE SAME LENGTH.
 5. FOR SPECIFIC PART NUMBER AND MATING INFORMATION PLEASE REFER TO CHART.
 6. PACKAGE PER PK-70873-563.
 7. EITHER MARK PART NUMBER AND DATE CODE APPROXIMATELY WHERE SHOWN OR PLACE A LABEL ON THE TUBE.
 8. OPTIONAL HOLE LOCATION FOR GROUNDED GUIDE PIN OR ADDITIONAL GUIDE PIN SUPPORT, FOR GROUNDED GUIDE PIN HOLE TO BE PLATED, DRILL SIZE #258, PAD SIZE #550.
 9. THESE PARTS CONFORM TO MOLEX COSMETIC SPECIFICATION PS-45499-02 CLASS B.

PART NUMBER TABLE				
ASSY PART NO.	K	L	P	TOTAL NO. OF DIFFERENTIAL PAIRS
75838-21**	9	16.65	24.78	20
75838-22**	24	44.40	52.53	100

P/N	0	1	2	3	4	5	6	7	8
75838-()	0	1	2	3	4	5	6	7	8

PIN LENGTH	GOLD (Au) THICKNESS
0-3.55 mm	0.25 micrometers
1-4.25 mm	
2-5.55 mm	
3-3.55 mm	0.76 micrometers
4-4.55 mm	
5-5.55 mm	
7-3.55 mm	
8-4.55 mm	1.27 micrometers
9-5.55 mm	

ADD MAPS PLATING ECN 00102-3688
DRAWN/DATE 2007/05/16
CHECKED/DATE CHOCOMELLE 2007/05/16
APPROVED/DATE APPRESHILLER 2007/05/16

QUALITY SYMBOLS	GENERAL TOLERANCES (UNLESS SPECIFIED)	DIMENSION STYLE	SCALE	DESIGN UNITS	THIRD ANGLE PROJECTION
∇=0	4 PLACES ±---+---	MM ONLY	5:1	METRIC	THIRD ANGLE PROJECTION
∇=0	3 PLACES ±---+---				
∇=0	2 PLACES ±---+---				
∇=0	1 PLACE ±---+---				
∇=0	0 PLACE ±---+---				

DRAWN BY THOMAS 2006/10/03
CHECKED BY X MULVEY 2006/01/04
APPROVED BY J BINGHAM 2006/01/05

TITLE: GBX 4-PAIR LEFT END BACKPLANE ASSEMBLY LEAD-FREE SALES DRAWING

molex

DOCUMENT NO. SD-75838-210
SHEET NO. 1 OF 1

SEE TABLE

THIS DRAWING CONTAINS INFORMATION THAT IS PROPRIETARY TO MOLEX INCORPORATED AND SHOULD NOT BE USED WITHOUT WRITTEN PERMISSION