

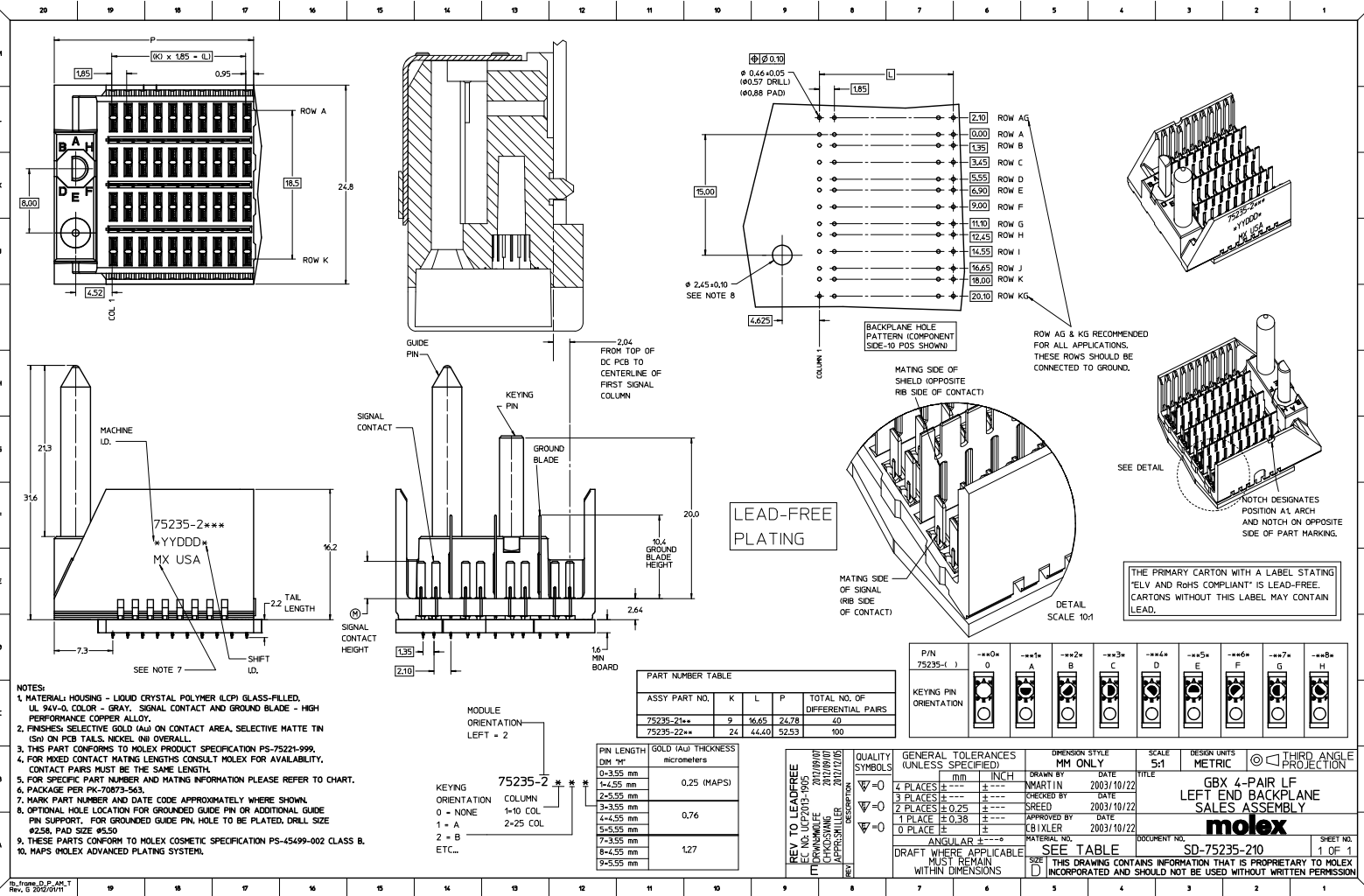
Excellent Integrated System Limited

Stocking Distributor

Click to view price, real time Inventory, Delivery & Lifecycle Information:

[Molex Connector Corporation](#)
[0752352245](#)

For any questions, you can email us directly:
sales@integrated-circuit.com



NOTES:

- MATERIAL: HOUSING - LIQUID CRYSTAL POLYMER (LCP) GLASS-FILLED, UL 94V-0, COLOR - GRAY, SIGNAL CONTACT AND GROUND BLADE - HIGH PERFORMANCE COPPER ALLOY.
- FINISHES: SELECTIVE GOLD (Au) ON CONTACT AREA, SELECTIVE MATTE TIN (Sn) ON PCB TAILS, NICKEL (Ni) OVERALL.
- THIS PART CONFORMS TO MOLEX PRODUCT SPECIFICATION PS-75221-999.
- FOR MIXED CONTACT MATING LENGTHS CONSULT MOLEX FOR AVAILABILITY, CONTACT PAIRS MUST BE THE SAME LENGTH.
- FOR SPECIFIC PART NUMBER AND MATING INFORMATION PLEASE REFER TO CHART.
- PACKAGE PER PK-70873-563.
- MARK PART NUMBER AND DATE CODE APPROXIMATELY WHERE SHOWN.
- OPTIONAL: HOLE LOCATION FOR GROUNDED GUIDE PIN OR ADDITIONAL GUIDE PIN SUPPORT, FOR GROUNDED GUIDE PIN, HOLE TO BE PLATED, DRILL SIZE #258, PAD SIZE #550.
- THESE PARTS CONFORM TO MOLEX COSMETIC SPECIFICATION PS-45499-002 CLASS B.
- HAPS: MOLEX ADVANCED PLATING SYSTEM.

PART NUMBER TABLE

ASSY PART NO.	K	L	P	TOTAL NO. OF DIFFERENTIAL PAIRS
75235-21**	9	16.65	24.78	40
75235-22**	24	44.40	52.53	100

PIN LENGTH DIM "M"	GOLD (Au) THICKNESS micrometers
0-3.55 mm	
4-4.55 mm	0.25 (MAPS)
5-5.55 mm	
6-6.55 mm	0.76
7-7.55 mm	
8-8.55 mm	1.27
9-9.55 mm	

KEYING ORIENTATION

0 = NONE
1 = A
2 = B
ETC...

P/N	0	A	B	C	D	E	F	G	H
75235-1	0	A	B	C	D	E	F	G	H

QUALITY SYMBOLS	GENERAL TOLERANCES (UNLESS SPECIFIED)	DIMENSION STYLE	SCALE	DESIGN UNITS	THIRD ANGLE PROJECTION
∇=0	4 PLACES ±---	MM ONLY <td>5:1 <td>METRIC <td>THIRD ANGLE PROJECTION</td> </td></td>	5:1 <td>METRIC <td>THIRD ANGLE PROJECTION</td> </td>	METRIC <td>THIRD ANGLE PROJECTION</td>	THIRD ANGLE PROJECTION
∇=0	3 PLACES ±---				
∇=0	2 PLACES ±0.25				
∇=0	1 PLACE ±0.38				
∇=0	0 PLACE ±				

REVISIONS

REV.	DATE	DESCRIPTION	APPROVED
1	2002/09/07	NEW PRODUCT	
2	2002/09/07	CHANGING APPROVALS	
3	2002/10/20	CHANGING APPROVALS	

QUALITY SYMBOLS

GENERAL TOLERANCES (UNLESS SPECIFIED)

DIMENSION STYLE: MM ONLY

SCALE: 5:1

DESIGN UNITS: METRIC

THIRD ANGLE PROJECTION

DRAFT WHERE APPLICABLE MUST REMAIN WITHIN DIMENSIONS

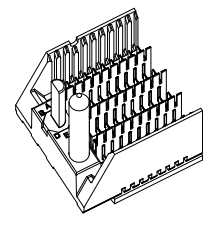
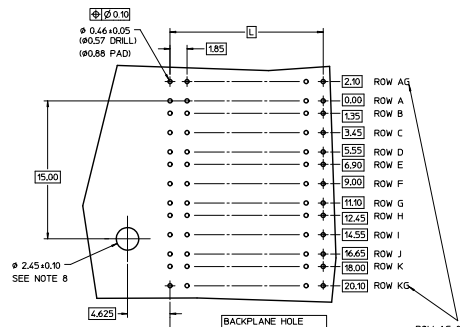
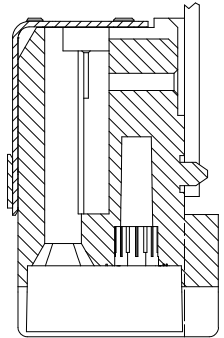
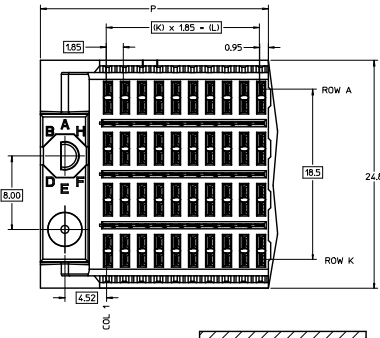
ANGULAR MATERIAL NO.

SEE TABLE

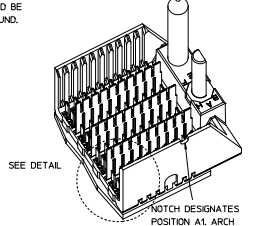
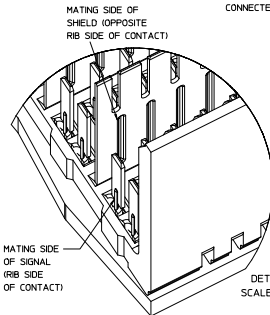
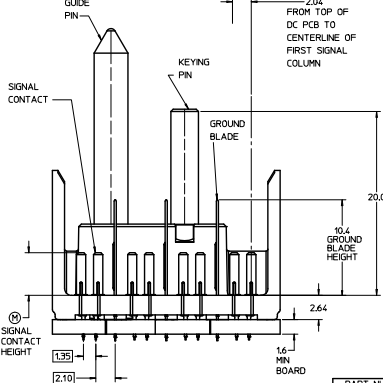
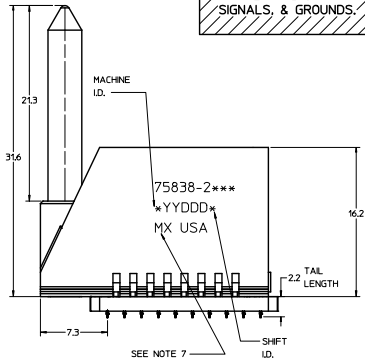
THIS DRAWING CONTAINS INFORMATION THAT IS PROPRIETARY TO MOLEX INCORPORATED AND SHOULD NOT BE USED WITHOUT WRITTEN PERMISSION

DOCUMENT NO. SD-75235-210

SHEET NO. 1 OF 1



LEAD-FREE PLATING ON SIGNALS, & GROUNDS.



NOTCH DESIGNATES POSITION A1 ARCH AND NOTCH ON OPPOSITE SIDE OF PART MARKING.

- NOTES:**
1. MATERIAL: HOUSING - LIQUID CRYSTAL POLYMER (LCP) GLASS-FILLED, UL 94V-0, COLOR - GRAY, SIGNAL CONTACT AND GROUND BLADE - HIGH PERFORMANCE COPPER ALLOY.
 2. FINISHES: SELECTIVE GOLD (Au) 0.25 (INAPS), 0.76, OR 1.27 micrometers THICKNESS ON CONTACT AREA, SELECTIVE MATTE TIN (Sn) ON PCB TAILS, NICKEL (Ni) OVERALL.
 3. THIS PART CONFORMS TO MOLEX PRODUCT SPECIFICATION PS-75231-999.
 4. FOR MIXED CONTACT MATING LENGTHS CONSULT MOLEX FOR AVAILABILITY, CONTACT PAIRS MUST BE THE SAME LENGTH.
 5. FOR SPECIFIC PART NUMBER AND MATING INFORMATION PLEASE REFER TO CHART.
 6. PACKAGE PER PK-70873-563.
 7. EITHER MARK PART NUMBER AND DATE CODE APPROXIMATELY WHERE SHOWN OR PLACE A LABEL ON THE TUBE.
 8. OPTIONAL HOLE LOCATION FOR GROUNDED GUIDE PIN OR ADDITIONAL GUIDE PIN SUPPORT, FOR GROUNDED GUIDE PIN HOLE TO BE PLATED, DRILL SIZE #258, PAD SIZE #550.
 9. THESE PARTS CONFORM TO MOLEX COSMETIC SPECIFICATION PS-45499-02 CLASS B.

PART NUMBER TABLE				
ASSY PART NO.	K	L	P	TOTAL NO. OF DIFFERENTIAL PAIRS
75838-21**	9	16.65	24.78	20
75838-22**	24	44.40	52.53	100

P/N	**0*	**1*	**2*	**3*	**4*	**5*	**6*	**7*	**8*
75838-()	0	A	B	C	D	E	F	G	H

PIN LENGTH	GOLD (Au) THICKNESS
DIM "M"	micrometers
0-3.55 mm	0.25
1-4.25 mm	
2-5.55 mm	
3-3.55 mm	0.76
4-4.55 mm	
7-3.55 mm	
8-4.55 mm	1.27
9-5.55 mm	

ADD MAPS PLATING
ECN 0752352245-3688
DRAWN/DATE 2007/05/16
CHKD/DATE 2007/05/16
APPROVED/DATE 2007/05/16

QUALITY SYMBOLS	GENERAL TOLERANCES (UNLESS SPECIFIED)	DIMENSION STYLE	SCALE	DESIGN UNITS	THIRD ANGLE PROJECTION
$\nabla=0$	4 PLACES ±---+---	MM ONLY	5:1	METRIC	
$\nabla=0$	3 PLACES ±---+---				
$\nabla=0$	2 PLACES ±0.25+---				
$\nabla=0$	1 PLACE ±0.38+---				
$\nabla=0$	0 PLACE ±---+---				

DRAWN BY	DATE	TITLE
THOMAS	2006/10/03	GBX 4-PAIR LEFT END BACKPLANE ASSEMBLY LEAD-FREE SALES DRAWING
CREATED BY	DATE	
KMULVEY	2006/01/04	
APPROVED BY	DATE	
J.BINGHAM	2006/01/05	

MODULE ORIENTATION
LEFT = 2

KEYING ORIENTATION
0 = NONE
1 = A
2 = B
ETC.

75838-2***

molex

DOCUMENT NO. SD-75838-210

SHEET NO. 1 OF 1