

Excellent Integrated System Limited

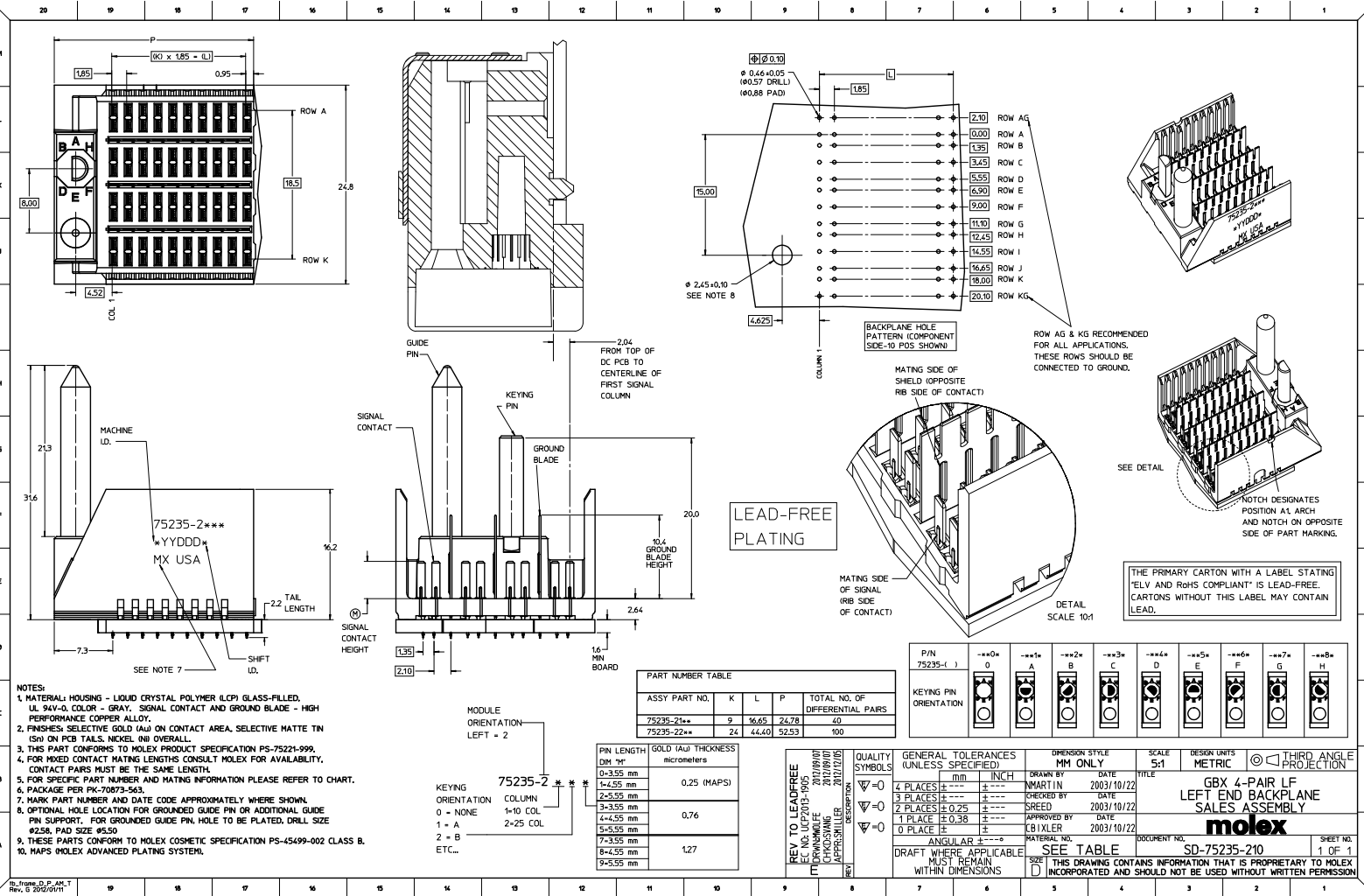
Stocking Distributor

Click to view price, real time Inventory, Delivery & Lifecycle Information:

[Molex Connector Corporation](#)
[0752352265](#)

For any questions, you can email us directly:

sales@integrated-circuit.com



NOTES:
 1. MATERIAL: HOUSING - LIQUID CRYSTAL POLYMER (LCP) GLASS-FILLED, UL 94V-0, COLOR - GRAY, SIGNAL CONTACT AND GROUND BLADE - HIGH PERFORMANCE COPPER ALLOY.
 2. FINISHES: SELECTIVE GOLD (Au) ON CONTACT AREA, SELECTIVE MATTE TIN (Sn) ON PCB TAILS, NICKEL (Ni) OVERALL.
 3. THIS PART CONFORMS TO MOLEX PRODUCT SPECIFICATION PS-75221-999.
 4. FOR MIXED CONTACT MATING LENGTHS CONSULT MOLEX FOR AVAILABILITY. CONTACT PAIRS MUST BE THE SAME LENGTH.
 5. FOR SPECIFIC PART NUMBER AND MATING INFORMATION PLEASE REFER TO CHART.
 6. PACKAGE PER PK-70873-563.
 7. MARK PART NUMBER AND DATE CODE APPROXIMATELY WHERE SHOWN.
 8. OPTIONAL: HOLE LOCATION FOR GROUNDED GUIDE PIN OR ADDITIONAL GUIDE PIN SUPPORT. FOR GROUNDED GUIDE PIN, HOLE TO BE PLATED, DRILL SIZE #258, PAD SIZE #550.
 9. THESE PARTS CONFORM TO MOLEX COSMETIC SPECIFICATION PS-45499-002 CLASS B.
 10. MAPS: MOLEX ADVANCED PLATING SYSTEM.

PART NUMBER TABLE				
ASSY PART NO.	K	L	P	TOTAL NO. OF DIFFERENTIAL PAIRS
75235-21**	9	16.65	24.78	40
75235-22**	24	44.40	52.53	100

PIN LENGTH DIM "M"	GOLD (Au) THICKNESS micrometers
0-3.55 mm	
4-4.55 mm	0.25 (MAPS)
5-5.55 mm	
6-6.55 mm	0.76
7-7.55 mm	
8-8.55 mm	1.27
9-9.55 mm	

REV TO LEAD-FREE	DATE	DESCRIPTION
1	2012/09/07	REVISION FOR LEAD-FREE
2	2012/09/07	CHANGING APPROVALS
3	2012/10/20	APPROVALS

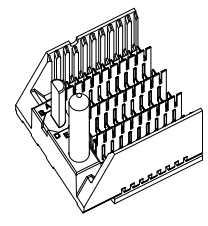
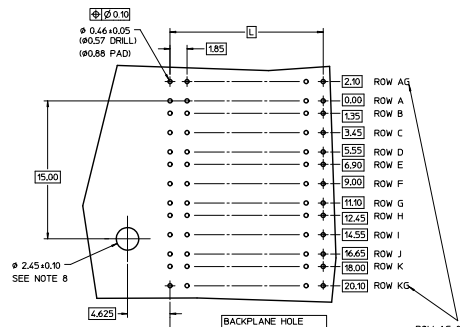
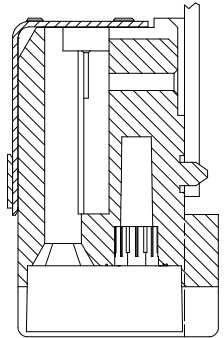
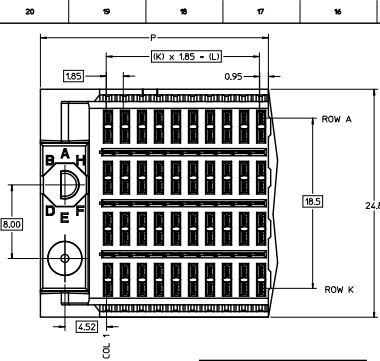
P/N	0	A	B	C	D	E	F	G	H
75235-1	0	A	B	C	D	E	F	G	H

QUALITY SYMBOLS	GENERAL TOLERANCES (UNLESS SPECIFIED)	DIMENSION STYLE	SCALE	DESIGN UNITS	THIRD ANGLE PROJECTION
∇=0	4 PLACES ±---	MM ONLY	5:1	METRIC	THIRD ANGLE PROJECTION
∇=0	3 PLACES ±---				
∇=0	2 PLACES ±0.25				
∇=0	1 PLACE ±0.38				
∇=0	0 PLACE ±---				

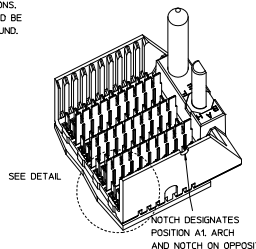
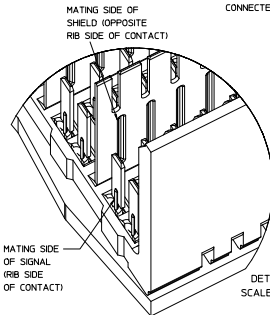
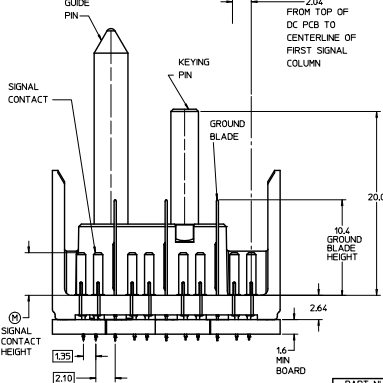
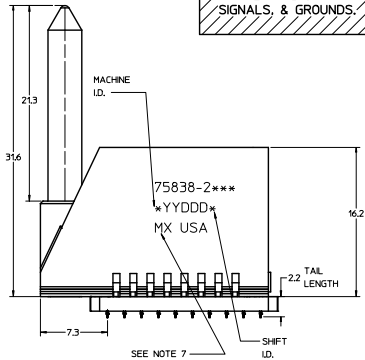
THE PRIMARY CARTON WITH A LABEL STATING "ELV AND RoHS COMPLIANT" IS LEAD-FREE. CARTONS WITHOUT THIS LABEL MAY CONTAIN LEAD.

GBX 4-PAIR LF LEFT END BACKPLANE SALES ASSEMBLY

molex
 DOCUMENT NO. SD-75235-210
 SHEET NO. 1 OF 1



LEAD-FREE PLATING ON SIGNALS, & GROUNDS.



- NOTES:
1. MATERIAL: HOUSING - LIQUID CRYSTAL POLYMER (LCP) GLASS-FILLED, UL 94V-0, COLOR - GRAY, SIGNAL CONTACT AND GROUND BLADE - HIGH PERFORMANCE COPPER ALLOY.
 2. FINISHES: SELECTIVE GOLD (Au) 0.25 (MAPS), 0.76, OR 1.27 micrometers THICKNESS ON CONTACT AREA, SELECTIVE MATTE TIN (Sn) ON PCB TAILS, NICKEL (Ni) OVERALL.
 3. THIS PART CONFORMS TO MOLEX PRODUCT SPECIFICATION PS-75231-999.
 4. FOR MIXED CONTACT MATING LENGTHS CONSULT MOLEX FOR AVAILABILITY, CONTACT Pairs MUST BE THE SAME LENGTH.
 5. FOR SPECIFIC PART NUMBER AND MATING INFORMATION PLEASE REFER TO CHART.
 6. PACKAGE PER PK-70873-563.
 7. EITHER MARK PART NUMBER AND DATE CODE APPROXIMATELY WHERE SHOWN OR PLACE A LABEL ON THE TUBE.
 8. OPTIONAL HOLE LOCATION FOR GROUNDED GUIDE PIN OR ADDITIONAL GUIDE PIN SUPPORT, FOR GROUNDED GUIDE PIN HOLE TO BE PLATED, DRILL SIZE #258, PAD SIZE #550.
 9. THESE PARTS CONFORM TO MOLEX COSMETIC SPECIFICATION PS-45499-02 CLASS B.

PART NUMBER TABLE				
ASSY PART NO.	K	L	P	TOTAL NO. OF DIFFERENTIAL PAIRS
75838-21**	9	16.65	24.78	20
75838-22**	24	44.40	52.53	100

P/N	**0*	**1*	**2*	**3*	**4*	**5*	**6*	**7*	**8*
75838-()	0	A	B	C	D	E	F	G	H

PIN LENGTH	GOLD (Au) THICKNESS
0-3.55 mm	0.25 micrometers
1-4.25 mm	
2-5.55 mm	
3-3.55 mm	0.76 micrometers
4-4.55 mm	
5-5.55 mm	
7-3.55 mm	
8-4.55 mm	
9-5.55 mm	1.27 micrometers

ADD MAPS PLATING ECN 00102-3688 DROWNDATE 2007/05/16 CHOCOMMELLY 2007/05/16 APPROVALS

QUALITY SYMBOLS	GENERAL TOLERANCES (UNLESS SPECIFIED)	DIMENSION STYLE	SCALE	DESIGN UNITS	THIRD ANGLE PROJECTION
∇=0	4 PLACES ±---+---	MM ONLY	5:1	METRIC	THIRD ANGLE PROJECTION
∇=0	3 PLACES ±---+---				
∇=0	2 PLACES ±---+---				
∇=0	1 PLACE ±---+---				
∇=0	0 PLACE ±---+---				

DRAWN BY: THOMAS DATE: 2006/10/03
 CHECKED BY: DATE:
 APPROVED BY: KMLVEY DATE: 2006/01/04
 J. BINGHAM DATE: 2006/01/05

molex

DOCUMENT NO. SD-75838-210 SHEET NO. 1 OF 1

THIS DRAWING CONTAINS INFORMATION THAT IS PROPRIETARY TO MOLEX INCORPORATED AND SHOULD NOT BE USED WITHOUT WRITTEN PERMISSION