

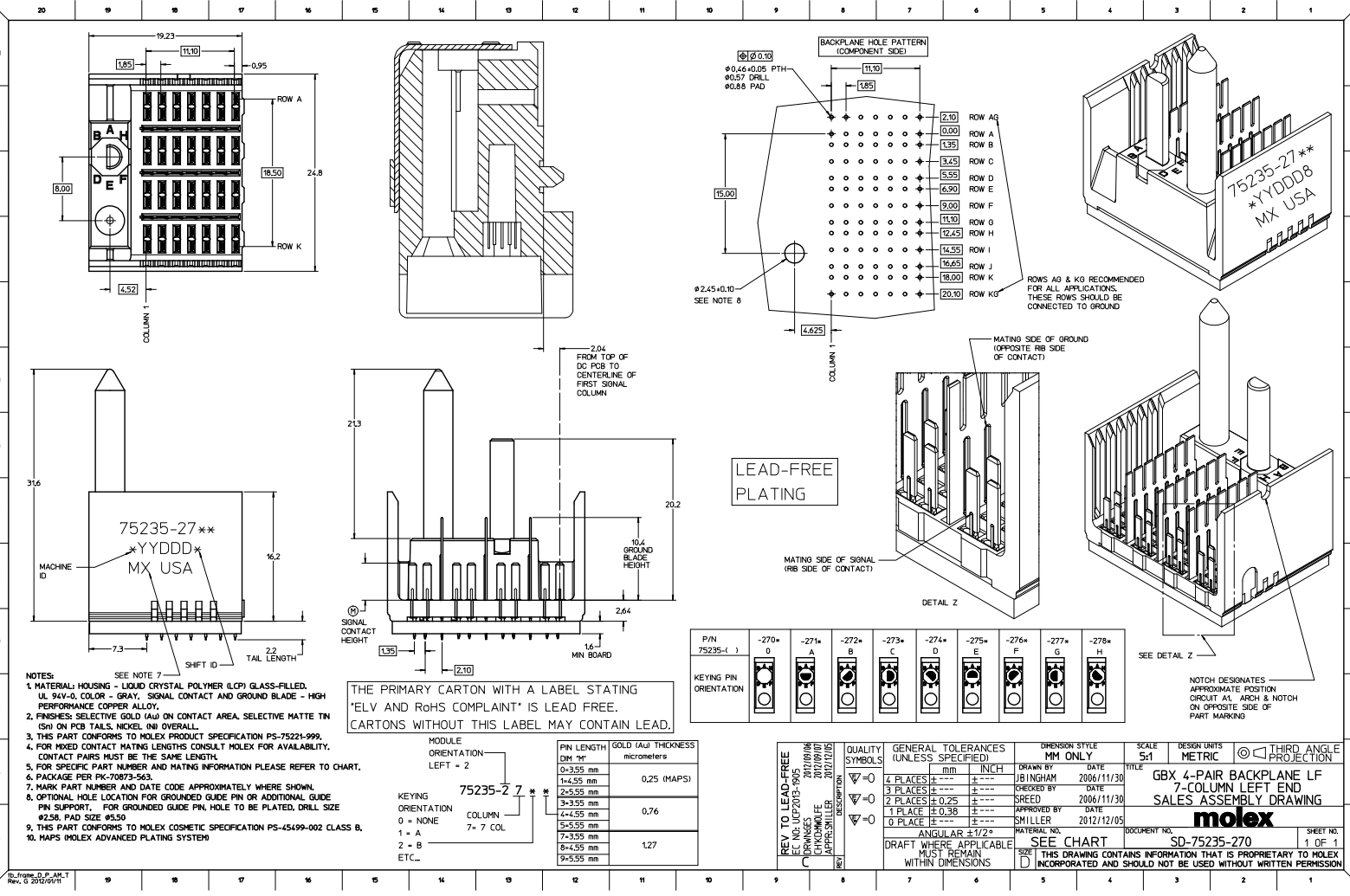
Excellent Integrated System Limited

Stocking Distributor

Click to view price, real time Inventory, Delivery & Lifecycle Information:

[Molex Connector Corporation](#)
[0752352738](#)

For any questions, you can email us directly:
sales@integrated-circuit.com



- NOTES:
1. MATERIAL: HOUSING - LIQUID CRYSTAL POLYMER (LCP) GLASS-FILLED, UL 94V-0, COLOR - GRAY, SIGNAL CONTACT AND GROUND BLADE - HIGH PERFORMANCE COPPER ALLOY.
 2. FINISHES: SELECTIVE GOLD (Au) ON CONTACT AREA, SELECTIVE MATTE TIN (Sn) ON PCB TAILS, NICKEL (Ni) OVERALL.
 3. THIS PART CONFORMS TO MOLEX PRODUCT SPECIFICATION PS-75221-999.
 4. FOR MIXED CONTACT MATING LENGTHS CONSULT MOLEX FOR AVAILABILITY. CONTACT PAIRS MUST BE THE SAME LENGTH.
 5. FOR SPECIFIC PART NUMBER AND MATING INFORMATION PLEASE REFER TO CHART.
 6. PACKAGE PER PK-70873-963.
 7. MARK PART NUMBER AND DATE CODE APPROXIMATELY WHERE SHOWN.
 8. OPTIONAL HOLE LOCATION FOR GROUNDED GUIDE PIN OR ADDITIONAL GUIDE PIN SUPPORT. FOR GROUNDED GUIDE PIN, HOLE TO BE PLATED, DRILL SIZE #258, PAD SIZE #650.
 9. THIS PART CONFORMS TO MOLEX COSMETIC SPECIFICATION PS-45499-002 CLASS B.
 10. MAPS (MOLEX ADVANCED PLATING SYSTEM)

THE PRIMARY CARTON WITH A LABEL STATING 'ELV AND RoHS COMPLIANT' IS LEAD FREE. CARTONS WITHOUT THIS LABEL MAY CONTAIN LEAD.

MODULE ORIENTATION	PIN LENGTH DIM "M"	GOLD (Au) THICKNESS micrometers
LEFT = 2	0-3.55 mm	0.25 (MAPS)
	1-4.55 mm	
	2-5.55 mm	0.76
	3-3.55 mm	
	4-4.55 mm	
	5-5.55 mm	1.27
	6-3.55 mm	
	7-4.55 mm	
	8-5.55 mm	
	9-5.55 mm	

PIN ORIENTATION	-270*	-271*	-272*	-273*	-274*	-275*	-276*	-277*	-278*
KEYING PIN ORIENTATION									

QUALITY SYMBOLS	GENERAL TOLERANCES (UNLESS SPECIFIED)		DIMENSION STYLE		SCALE	DESIGN UNITS	THIRD ANGLE PROJECTION
	mm	INCH	MM ONLY	INCH ONLY			
▽=0	4 PLACES ±	---	---	---	5:1	METRIC	---
▽=0	3 PLACES ±	---	---	---			---
▽=0	2 PLACES ±	0.25	---	---			---
▽=0	1 PLACE ±	0.38	---	---			---
▽=0	0 PLACE ±	---	---	---			---
DRAFT WHERE APPLICABLE MUST REMAIN WITHIN DIMENSIONS				MATERIAL NO. SEE CHART		DOCUMENT NO. SD-75235-270	
ANGULAR ±1/2°				DRAWN BY J.BINGHAM		DATE 2006/11/30	
CHECKED BY C.RODRIGUES				CHECKED BY SREED		DATE 2006/11/30	
APPROVED BY J.RODRIGUES				APPROVED BY SMILLER		DATE 2012/12/05	
REV TO LEAD-FREE				DRAWN BY		TITLE	
EC NO. UEP2013-905				DATE		GBX 4-PAIR BACKPLANE LF	
REV D				DATE		7-COLUMN LEFT END	
REV C				DATE		SALES ASSEMBLY DRAWING	
REV B				DATE		molex	
REV A				DATE		SHEET NO. 1 OF 1	