

## Excellent Integrated System Limited

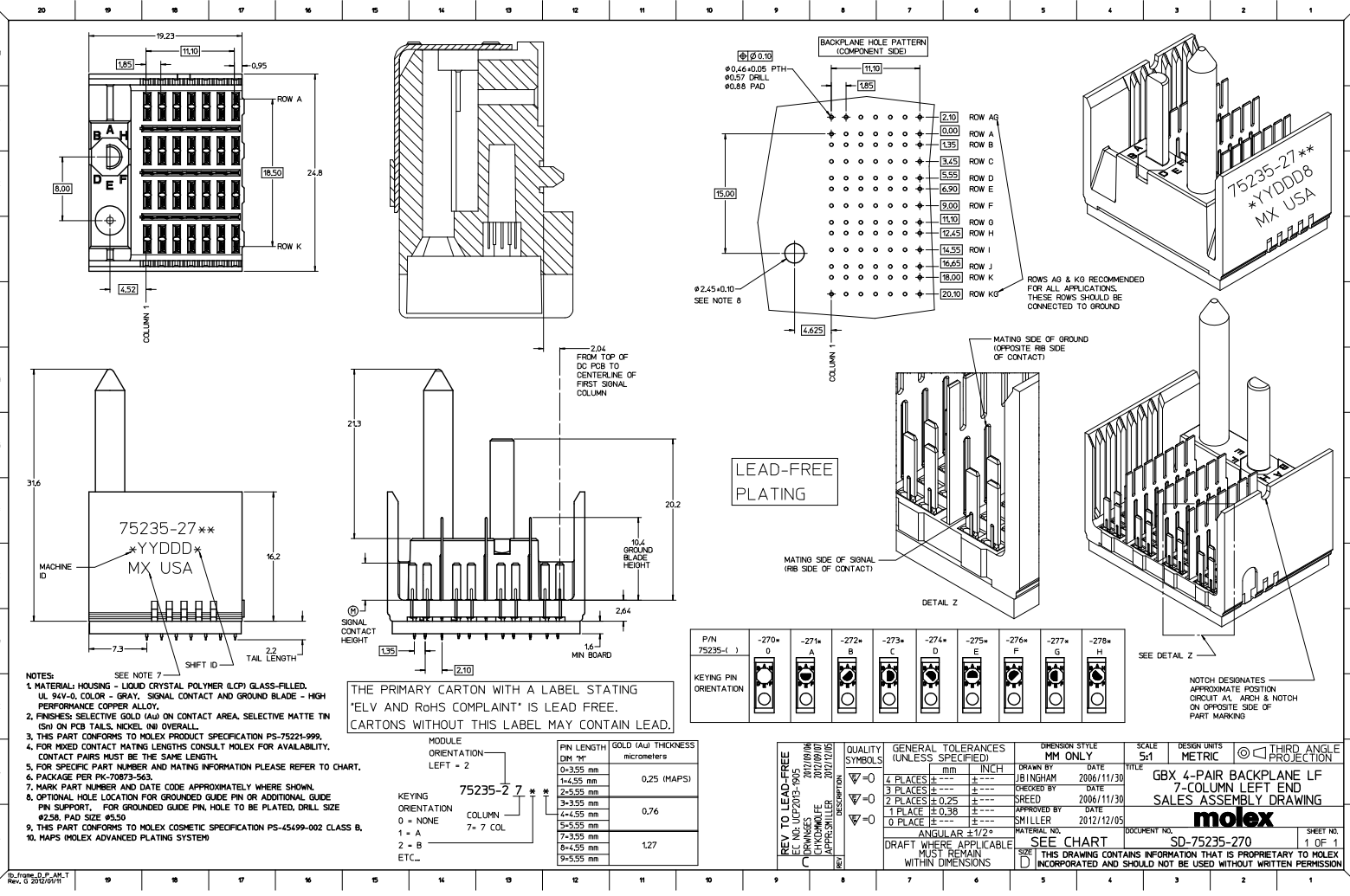
Stocking Distributor

Click to view price, real time Inventory, Delivery & Lifecycle Information:

[Molex Connector Corporation](#)  
[0752352768](#)

For any questions, you can email us directly:

[sales@integrated-circuit.com](mailto:sales@integrated-circuit.com)



**NOTES:**  
 1. MATERIAL: HOUSING - LIQUID CRYSTAL POLYMER (LCP) GLASS-FILLED, UL 94V-0, COLOR - GRAY, SIGNAL CONTACT AND GROUND BLADE - HIGH PERFORMANCE COPPER ALLOY.  
 2. FINISHES: SELECTIVE GOLD (Au) ON CONTACT AREA, SELECTIVE MATTE TIN (Sn) ON PCB TAILS, NICKEL (Ni) OVERALL.  
 3. THIS PART CONFORMS TO MOLEX PRODUCT SPECIFICATION PS-75221-999.  
 4. FOR MIXED CONTACT MATING LENGTHS CONSULT MOLEX FOR AVAILABILITY. CONTACT PAIRS MUST BE THE SAME LENGTH.  
 5. FOR SPECIFIC PART NUMBER AND MATING INFORMATION PLEASE REFER TO CHART.  
 6. PACKAGE PER PK-70873-963.  
 7. MARK PART NUMBER AND DATE CODE APPROXIMATELY WHERE SHOWN.  
 8. OPTIONAL HOLE LOCATION FOR GROUNDED GUIDE PIN OR ADDITIONAL GUIDE PIN SUPPORT. FOR GROUNDED GUIDE PIN, HOLE TO BE PLATED, DRILL SIZE #256, PAD SIZE #650.  
 9. THIS PART CONFORMS TO MOLEX COSMETIC SPECIFICATION PS-45499-002 CLASS B.  
 10. MAPS (MOLEX ADVANCED PLATING SYSTEM)

THE PRIMARY CARTON WITH A LABEL STATING 'ELV AND RoHS COMPLIANT\*' IS LEAD FREE. CARTONS WITHOUT THIS LABEL MAY CONTAIN LEAD.

MODULE ORIENTATION LEFT = 2		PIN LENGTH DIM "M"	GOLD (Au) THICKNESS micrometers
0 = NONE	1 = A	0-3.55 mm	0.25 (MAPS)
2 = B	7 = 7 COL	1-4.55 mm	
ETC...		2-5.55 mm	0.76
		3-3.55 mm	
		4-4.55 mm	1.27
		5-5.55 mm	
		6-4.55 mm	
		9-5.55 mm	

PIN 75235-( )	-270*	-271*	-272*	-273*	-274*	-275*	-276*	-277*	-278*
KEYING PIN ORIENTATION	0	A	B	C	D	E	F	G	H

QUALITY SYMBOLS	GENERAL TOLERANCES (UNLESS SPECIFIED)		DIMENSION STYLE		SCALE	DESIGN UNITS	THIRD ANGLE PROJECTION
	mm	INCH	MM ONLY	DATE			
▽=0	4 PLACES	±.00	±.00	DRAWN BY	5:1	METRIC	THIRD ANGLE PROJECTION
▽=0	3 PLACES	±.01	±.01	CHECKED BY			
▽=0	2 PLACES	±.025	±.010	SREED	2006/11/30		
▽=0	1 PLACE	±.038	±.015	APPROVED BY			
▽=0	0 PLACE	±.076	±.030	SMILLER	2012/12/05		
		ANGULAR ±1/2°		MATERIAL NO.			
		DRAFT WHERE APPLICABLE MUST REMAIN WITHIN DIMENSIONS		SEE CHART			
				THIS DRAWING CONTAINS INFORMATION THAT IS PROPRIETARY TO MOLEX INCORPORATED AND SHOULD NOT BE USED WITHOUT WRITTEN PERMISSION			

DOCUMENT NO. SD-75235-270  
 TITLE: GBX 4-PAIR BACKPLANE LF 7-COLUMN LEFT END SALES ASSEMBLY DRAWING  
 DATE: 2006/11/30  
 DRAWN BY: J BINGHAM  
 CHECKED BY: SREED  
 APPROVED BY: SMILLER  
 MATERIAL NO.:  
 SEE CHART  
 THIS DRAWING CONTAINS INFORMATION THAT IS PROPRIETARY TO MOLEX INCORPORATED AND SHOULD NOT BE USED WITHOUT WRITTEN PERMISSION