

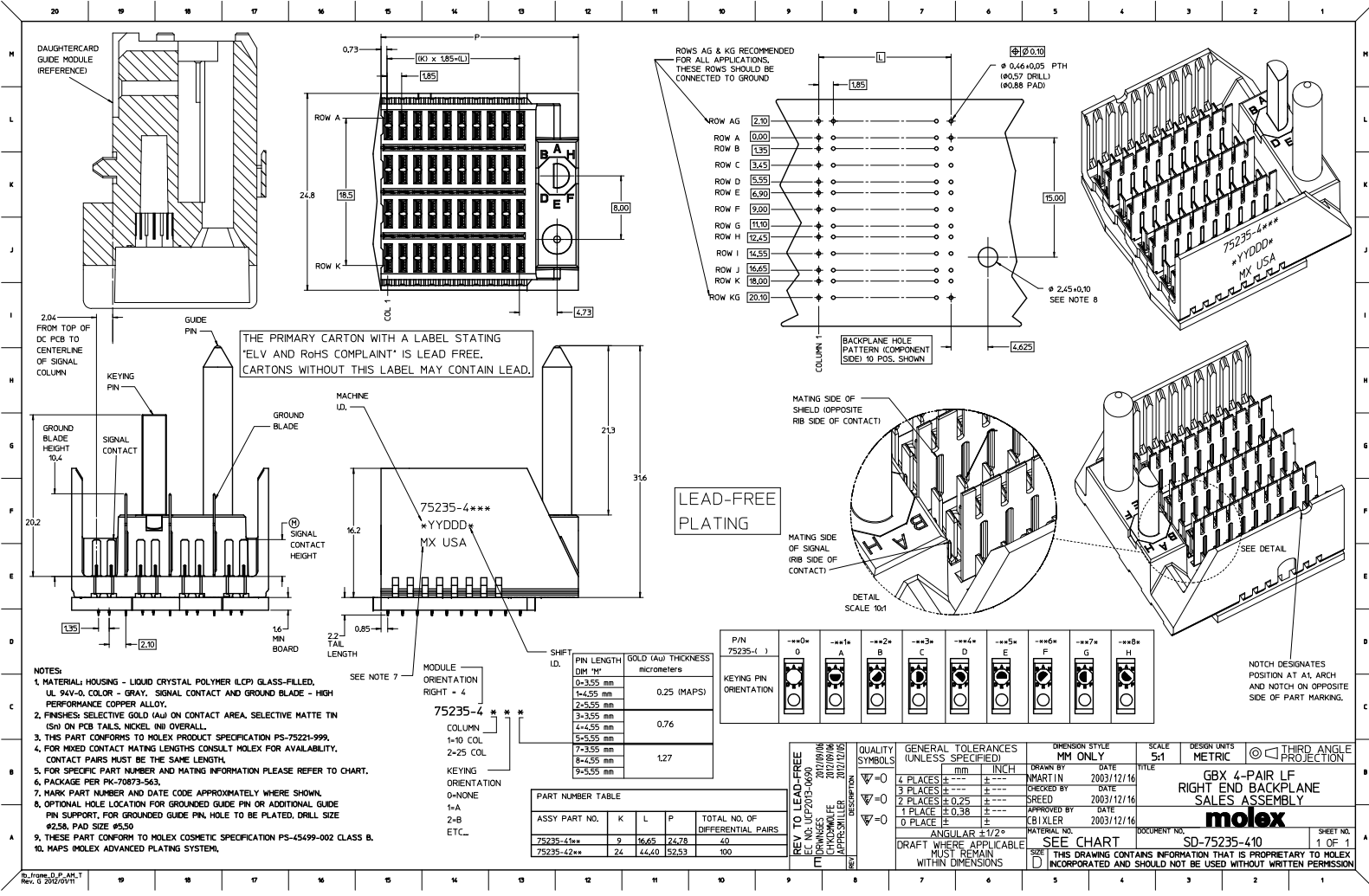
Excellent Integrated System Limited

Stocking Distributor

Click to view price, real time Inventory, Delivery & Lifecycle Information:

[Molex Connector Corporation](#)
[0752354117](#)

For any questions, you can email us directly:
sales@integrated-circuit.com



- NOTES:**
1. MATERIAL: HOUSING - LIQUID CRYSTAL POLYMER (LCP) GLASS-FILLED, UL 94V-0, COLOR - GRAY, SIGNAL CONTACT AND GROUND BLADE - HIGH PERFORMANCE COPPER ALLOY.
 2. FINISHES: SELECTIVE GOLD (Au) ON CONTACT AREA, SELECTIVE MATTE TIN (Sn) ON PCB TAILS, NICKEL (Ni) OVERALL.
 3. THIS PART CONFORMS TO MOLEX PRODUCT SPECIFICATION PS-75221-999.
 4. FOR MATED CONTACT MATING LENGTHS CONSULT MOLEX FOR AVAILABILITY. CONTACT PAIRS MUST BE THE SAME LENGTH.
 5. FOR SPECIFIC PART NUMBER AND MATING INFORMATION PLEASE REFER TO CHART.
 6. PACKAGE PER PK-70873-563.
 7. MARK PART NUMBER AND DATE CODE APPROXIMATELY WHERE SHOWN.
 8. OPTIONAL HOLE LOCATION FOR GROUNDED GUIDE PIN OR ADDITIONAL GUIDE PIN SUPPORT. FOR GROUNDED GUIDE PIN HOLE TO BE PLATED, DRILL SIZE #25, PAD SIZE #50.
 9. THESE PART CONFORM TO MOLEX COSMETIC SPECIFICATION PS-45499-002 CLASS B.
 10. MAPS IMOLEX ADVANCED PLATING SYSTEM.

PIN LENGTH DIM "M"	GOLD (Au) THICKNESS micrometers
0-3.55 mm	0.25 (MAPS)
1-4.25 mm	
2-5.55 mm	0.76
3-3.55 mm	
4-4.55 mm	
5-5.55 mm	
7-3.55 mm	1.27
8-4.55 mm	
9-5.55 mm	

ASSY PART NO.	K	L	P	TOTAL NO. OF DIFFERENTIAL PAIRS
75235-41**	9	16.65	24.78	40
75235-42**	24	44.40	52.53	100

P/N	0	1	2	3	4	5	6	7	8
75235-()									
KEYING PIN ORIENTATION									

QUALITY SYMBOLS	GENERAL TOLERANCES (UNLESS SPECIFIED)	DIMENSION STYLE	SCALE	DESIGN UNITS	THIRD ANGLE PROJECTION
∇=0	4 PLACES ±--- ±---	MM ONLY	5:1	METRIC	
∇=0	3 PLACES ±--- ±---				
∇=0	2 PLACES ±0.25 ±---				
∇=0	1 PLACE ±0.38 ±---				
∇=0	0 PLACE ± ±---				
	ANGULAR ±1/2°				

REV. TO LEAD-FREE	QUALITY SYMBOLS	GENERAL TOLERANCES (UNLESS SPECIFIED)	DIMENSION STYLE	SCALE	DESIGN UNITS	THIRD ANGLE PROJECTION
REV. TO LEAD-FREE	∇=0	4 PLACES ±--- ±---	MM ONLY	5:1	METRIC	
REV. TO LEAD-FREE	∇=0	3 PLACES ±--- ±---				
REV. TO LEAD-FREE	∇=0	2 PLACES ±0.25 ±---				
REV. TO LEAD-FREE	∇=0	1 PLACE ±0.38 ±---				
REV. TO LEAD-FREE	∇=0	0 PLACE ± ±---				
REV. TO LEAD-FREE		ANGULAR ±1/2°				

GBX 4-PAIR LF
RIGHT END BACKPLANE
SALES ASSEMBLY

molex

DOCUMENT NO. SD-75235-410

SHEET NO. 1 OF 1