

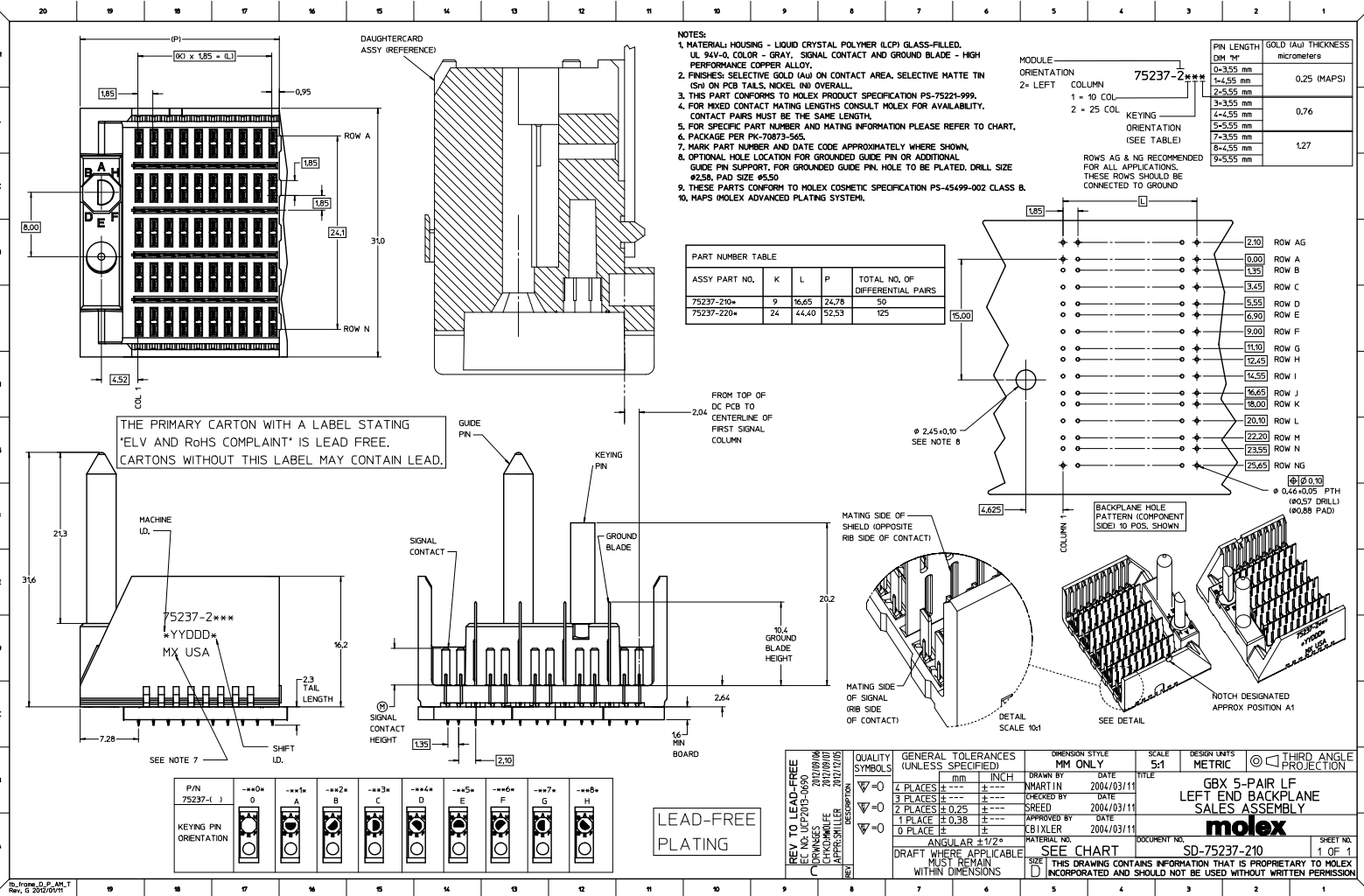
Excellent Integrated System Limited

Stocking Distributor

Click to view price, real time Inventory, Delivery & Lifecycle Information:

[Molex Connector Corporation](#)
[0752372104](#)

For any questions, you can email us directly:
sales@integrated-circuit.com



- NOTES:**
1. MATERIAL: HOUSING - LIQUID CRYSTAL POLYMER (LCP) GLASS-FILLED, UL 94V-0, COLOR - GRAY, SIGNAL CONTACT AND GROUND BLADE - HIGH PERFORMANCE COPPER ALLOY.
 2. FINISHES: SELECTIVE GOLD (Au) ON CONTACT AREA, SELECTIVE MATTE TIN (Sn) ON PCB TAILS, NICKEL (Ni) OVERALL.
 3. THIS PART CONFORMS TO MOLEX PRODUCT SPECIFICATION PS-75221-999.
 4. FOR MIXED CONTACT MATING LENGTHS CONSULT MOLEX FOR AVAILABILITY. CONTACT PAIRS MUST BE THE SAME LENGTH.
 5. FOR SPECIFIC PART NUMBER AND MATING INFORMATION PLEASE REFER TO CHART.
 6. PACKAGE PER PW-70873-565.
 7. MARK PART NUMBER AND DATE CODE APPROXIMATELY WHERE SHOWN.
 8. OPTIONAL HOLE LOCATION FOR GROUNDED GUIDE PIN OR ADDITIONAL GUIDE PIN SUPPORT. FOR GROUNDED GUIDE PIN, HOLE TO BE PLATED, DRILL SIZE #0.58, PAD SIZE #0.50.
 9. THESE PARTS CONFORM TO MOLEX COSMETIC SPECIFICATION PS-45499-002 CLASS B.
 10. MAPS (MOLEX ADVANCED PLATING SYSTEM).

MODULE ORIENTATION
2= LEFT

COLUMN
1 = 10 COL
2 = 25 COL

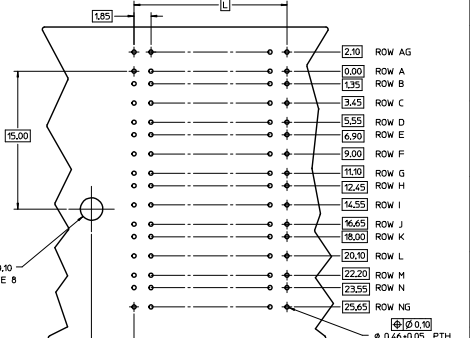
KEYING ORIENTATION (SEE TABLE)

ROWS AG & NG RECOMMENDED FOR ALL APPLICATIONS. THESE ROWS SHOULD BE CONNECTED TO GROUND

| PIN LENGTH DIM "M" | GOLD (Au) THICKNESS micrometers |
|--------------------|---------------------------------|
| 0-3.95 mm | 0.25 (MAPS) |
| 4-5.5 mm | |
| 2-5.55 mm | 0.76 |
| 3-3.55 mm | |
| 4-4.55 mm | |
| 5-5.55 mm | 1.27 |
| 7-3.55 mm | |
| 8-4.55 mm | |
| 9-5.55 mm | |

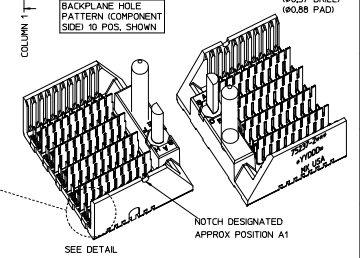
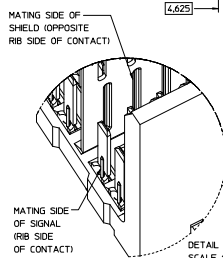
PART NUMBER TABLE

| ASSY PART NO. | K | L | P | TOTAL NO. OF DIFFERENTIAL PAIRS |
|---------------|----|-------|-------|---------------------------------|
| 75237-210* | 9 | 16.65 | 24.78 | 50 |
| 75237-220* | 24 | 44.40 | 52.53 | 125 |



2.04
2.04

FROM TOP OF DC PCB TO CENTERLINE OF FIRST SIGNAL COLUMN



| P/N | **0* | **1* | **2* | **3* | **4* | **5* | **6* | **7* | **8* |
|---------|------|------|------|------|------|------|------|------|------|
| 75237-1 | 0 | A | B | C | D | E | F | G | H |

KEYING PIN ORIENTATION

| QUALITY SYMBOLS | GENERAL TOLERANCES (UNLESS SPECIFIED) | | DIMENSION STYLE | | SCALE | DESIGN LIMITS | THIRD ANGLE PROJECTION |
|-----------------|---------------------------------------|------|-----------------|------------|-------|---------------|------------------------|
| | mm | INCH | MM ONLY | INCH | | | |
| ∇=0 | 4 PLACES ±--- | ±--- | MARTIN | DATE | 5:1 | METRIC | |
| ∇=0 | 3 PLACES ±--- | ±--- | CHECKED BY | DATE | | | |
| ∇=0 | 2 PLACES ±0.25 | ±--- | APPROVED BY | DATE | | | |
| ∇=0 | 1 PLACE ±0.38 | ±--- | APPROVED BY | DATE | | | |
| ∇=0 | 0 PLACE ± | ±--- | CBI XLER | 2004/03/11 | | | |

MATERIAL: NG

ANGULAR ±1/2°

DRAFT WHERE APPLICABLE MUST REMAIN WITHIN DIMENSIONS

SEE CHART

DOCUMENT NO. SD-75237-210

SHEET NO. 1 OF 1

GBX 5-PAIR LF LEFT END BACKPLANE SALES ASSEMBLY

molex