

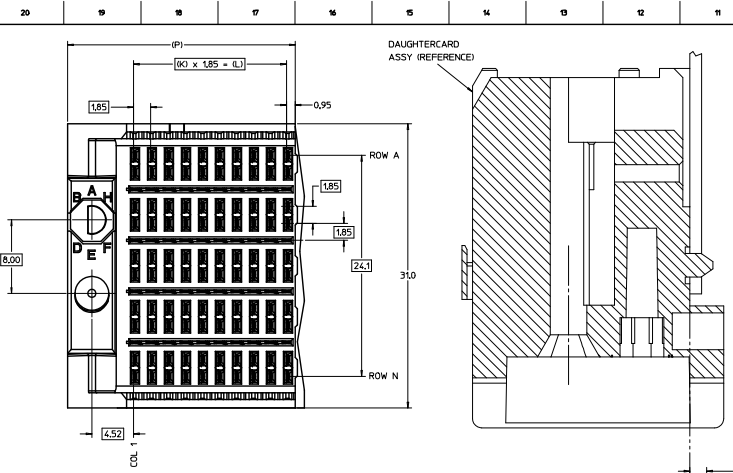
## Excellent Integrated System Limited

Stocking Distributor

Click to view price, real time Inventory, Delivery & Lifecycle Information:

[Molex Connector Corporation](#)  
[0752372143](#)

For any questions, you can email us directly:  
[sales@integrated-circuit.com](mailto:sales@integrated-circuit.com)



- NOTES:
- MATERIAL: HOUSING - LIQUID CRYSTAL POLYMER (LCP) GLASS-FILLED, UL 94V-0, COLOR - GRAY, SIGNAL CONTACT AND GROUND BLADE - HIGH PERFORMANCE COPPER ALLOY.
  - FINISHES: SELECTIVE GOLD (Au) ON CONTACT AREA, SELECTIVE MATTE TIN (Sn) ON PCB TAILS, NICKEL (Ni) OVERALL.
  - THIS PART CONFORMS TO MOLEX PRODUCT SPECIFICATION PS-75221-999.
  - FOR MIXED CONTACT MATING LENGTHS CONSULT MOLEX FOR AVAILABILITY, CONTACT PAIRS MUST BE THE SAME LENGTH.
  - FOR SPECIFIC PART NUMBER AND MATING INFORMATION PLEASE REFER TO CHART.
  - PACKAGE PER PW-70873-565.
  - MARK PART NUMBER AND DATE CODE APPROXIMATELY WHERE SHOWN.
  - OPTIONAL HOLE LOCATION FOR GROUNDED GUIDE PIN OR ADDITIONAL GUIDE PIN SUPPORT, FOR GROUNDED GUIDE PIN, HOLE TO BE PLATED, DRILL SIZE #0.58, PAD SIZE #0.50.
  - THESE PARTS CONFORM TO MOLEX COSMETIC SPECIFICATION PS-45499-002 CLASS B.
  - MAPS (MOLEX ADVANCED PLATING SYSTEM).

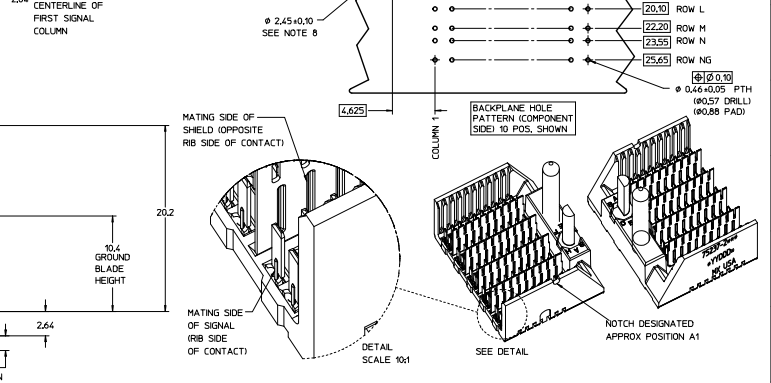
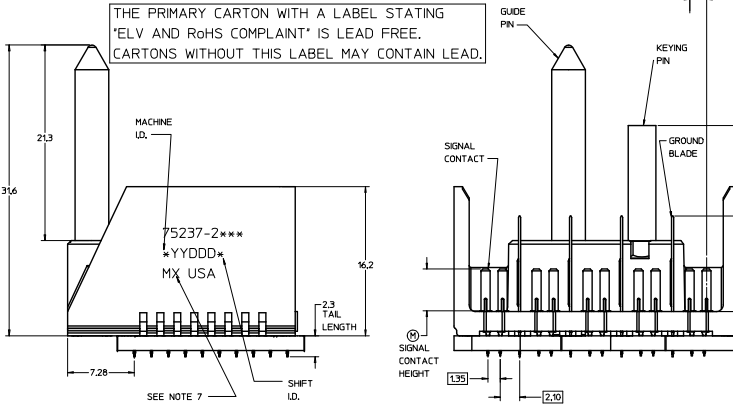
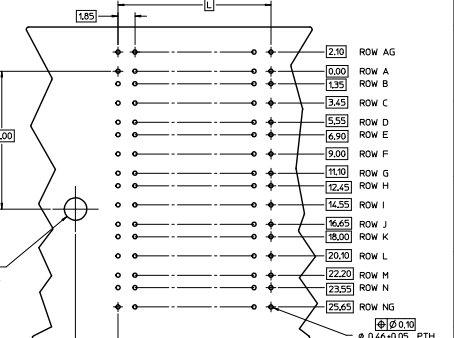
MODULE ORIENTATION  
2= LEFT

COLUMN	KEYING ORIENTATION (SEE TABLE)	PIN LENGTH DIM "m"	GOLD (Au) THICKNESS micrometers
1 = 10 COL		0-3.95 mm	0.25 (MAPS)
2 = 25 COL		4-5.55 mm	
		2-5.55 mm	0.76
		3-3.55 mm	
		4-4.55 mm	
		5-5.55 mm	
		7-3.55 mm	
		8-4.55 mm	1.27
		9-5.55 mm	

ROWS AG & NG RECOMMENDED FOR ALL APPLICATIONS. THESE ROWS SHOULD BE CONNECTED TO GROUND

PART NUMBER TABLE

ASSY PART NO.	K	L	P	TOTAL NO. OF DIFFERENTIAL PAIRS
75237-210*	9	16.65	24.78	50
75237-220*	24	44.40	52.53	125



KEYING PIN ORIENTATION

P/N	---0*	---1*	---2*	---3*	---4*	---5*	---6*	---7*	---8*
75237-1	0	A	B	C	D	E	F	G	H

LEAD-FREE PLATING

REV. TO LEAD-FREE ECN NO. LCP2013-0090 C DOWNSHIFTS 2012/09/06 CHROMIUM PLATE 2012/09/07 APPROVALS 2012/07/05 REV. 1	QUALITY SYMBOLS	GENERAL TOLERANCES (UNLESS SPECIFIED)	DIMENSION STYLE	SCALE	DESIGN LIMITS	THIRD ANGLE PROJECTION
	4 PLACES ±0.15	mm	MM ONLY	5:1	METRIC	
	3 PLACES ±0.25	INCH				
	2 PLACES ±0.38					
DRAWN BY: NMARTIN		DATE: 2004/03/11		TITLE: GBX 5-PAIR LF LEFT END BACKPLANE SALES ASSEMBLY		SHEET NO. 1 OF 1
CHECKED BY: SREED		DATE: 2004/03/11		APPROVED BY: CBIXLER		
APPROVED BY: CBIXLER		DATE: 2004/03/11		MATERIAL NO. SEE CHART		
DRAFT WHERE APPLICABLE MUST REMAIN WITHIN DIMENSIONS		ANGULAR ±1/2°		DOCUMENT NO. SD-75237-210		
THIS DRAWING CONTAINS INFORMATION THAT IS PROPRIETARY TO MOLEX INCORPORATED AND SHOULD NOT BE USED WITHOUT WRITTEN PERMISSION						