

Excellent Integrated System Limited

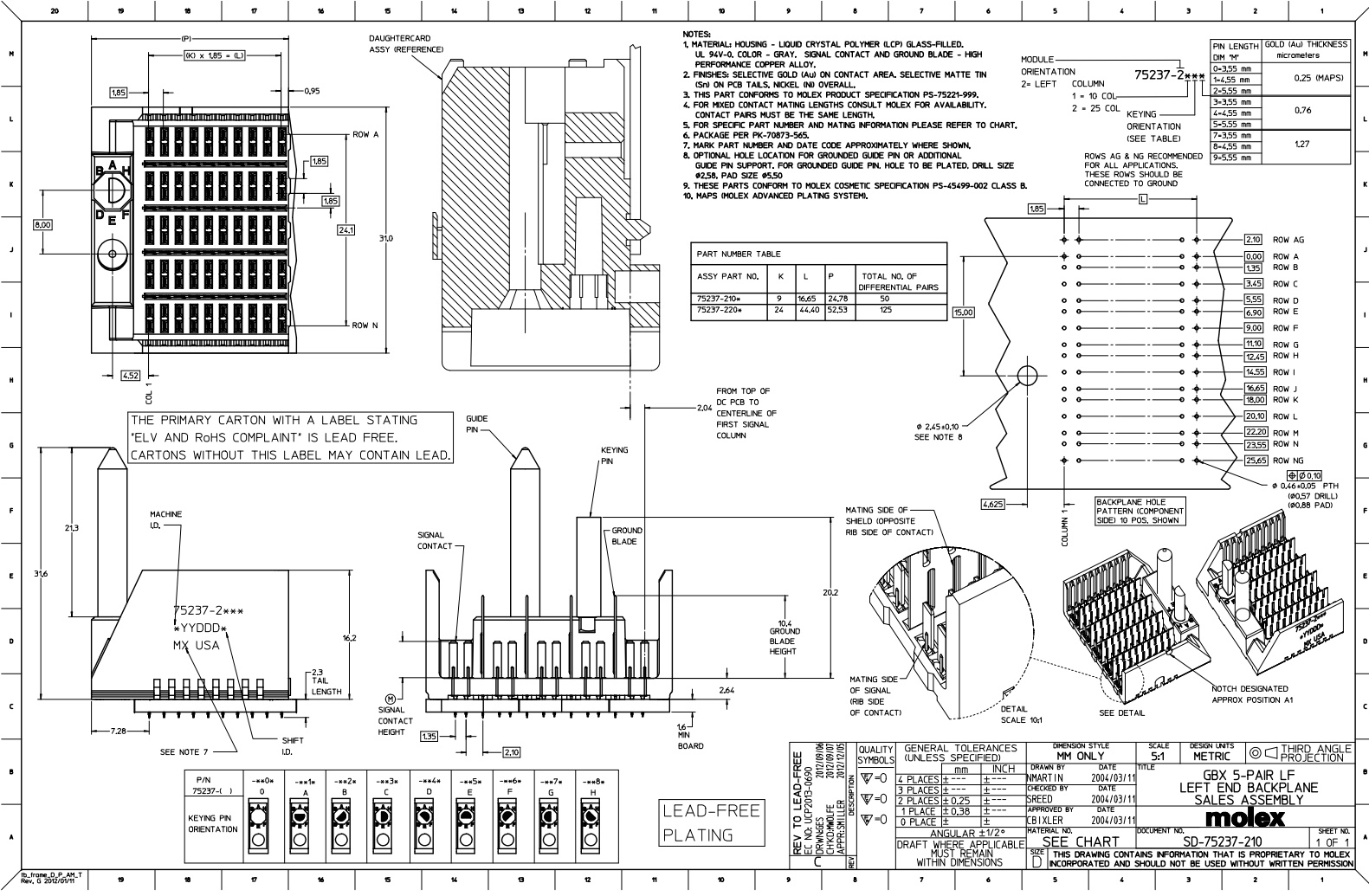
Stocking Distributor

Click to view price, real time Inventory, Delivery & Lifecycle Information:

[Molex Connector Corporation](#)
[0752372214](#)

For any questions, you can email us directly:

sales@integrated-circuit.com



| QUALITY SYMBOLS | GENERAL TOLERANCES (UNLESS SPECIFIED) | | DIMENSION STYLE | | SCALE | DESIGN LIMITS | THIRD ANGLE PROJECTION |
|-----------------|---------------------------------------|------|-----------------|------|-------|---------------|------------------------|
| | mm | INCH | MM ONLY | INCH | | | |
| $\nabla=0$ | 4 PLACES \pm | --- | MARTIN | DATE | 5:1 | METRIC | |
| $\nabla=0$ | 3 PLACES \pm | --- | CHECKED BY | DATE | | | |
| $\nabla=0$ | 2 PLACES \pm | --- | APPROVED BY | DATE | | | |
| $\nabla=0$ | 1 PLACE \pm | --- | APPROVED BY | DATE | | | |
| $\nabla=0$ | 0 PLACE \pm | --- | APPROVED BY | DATE | | | |

REV. TO LEAD-FREE
 EC: 04/2013
 C: 02/2013
 CHROMIUM: 2012/09/17
 APPROVALS: 2012/07/05

QUALITY SYMBOLS
 $\nabla=0$
 $\nabla=0$
 $\nabla=0$

GENERAL TOLERANCES (UNLESS SPECIFIED)
 4 PLACES \pm ---
 3 PLACES \pm ---
 2 PLACES \pm ---
 1 PLACE \pm ---
 0 PLACE \pm ---

DIMENSION STYLE
 MM ONLY

SCALE
 5:1

DESIGN LIMITS
 METRIC

THIRD ANGLE PROJECTION

DRAWN BY: DATE
 CHECKED BY: DATE
 APPROVED BY: DATE

MATERIAL: SEE CHART
 ANGLE: $\pm 1/2^\circ$

DRAFT WHERE APPLICABLE MUST REMAIN WITHIN DIMENSIONS

DOCUMENT NO.: SD-75237-210
 SHEET NO.: 1 OF 1

INCORPORATED AND SHOULD NOT BE USED WITHOUT WRITTEN PERMISSION

| P/N | KEYING ORIENTATION |
|---------|--------------------|
| 75237-1 | 0 |
| 0 | A |
| 1 | B |
| 2 | C |
| 3 | D |
| 4 | E |
| 5 | F |
| 6 | G |
| 7 | H |
| 8 | |