

## Excellent Integrated System Limited

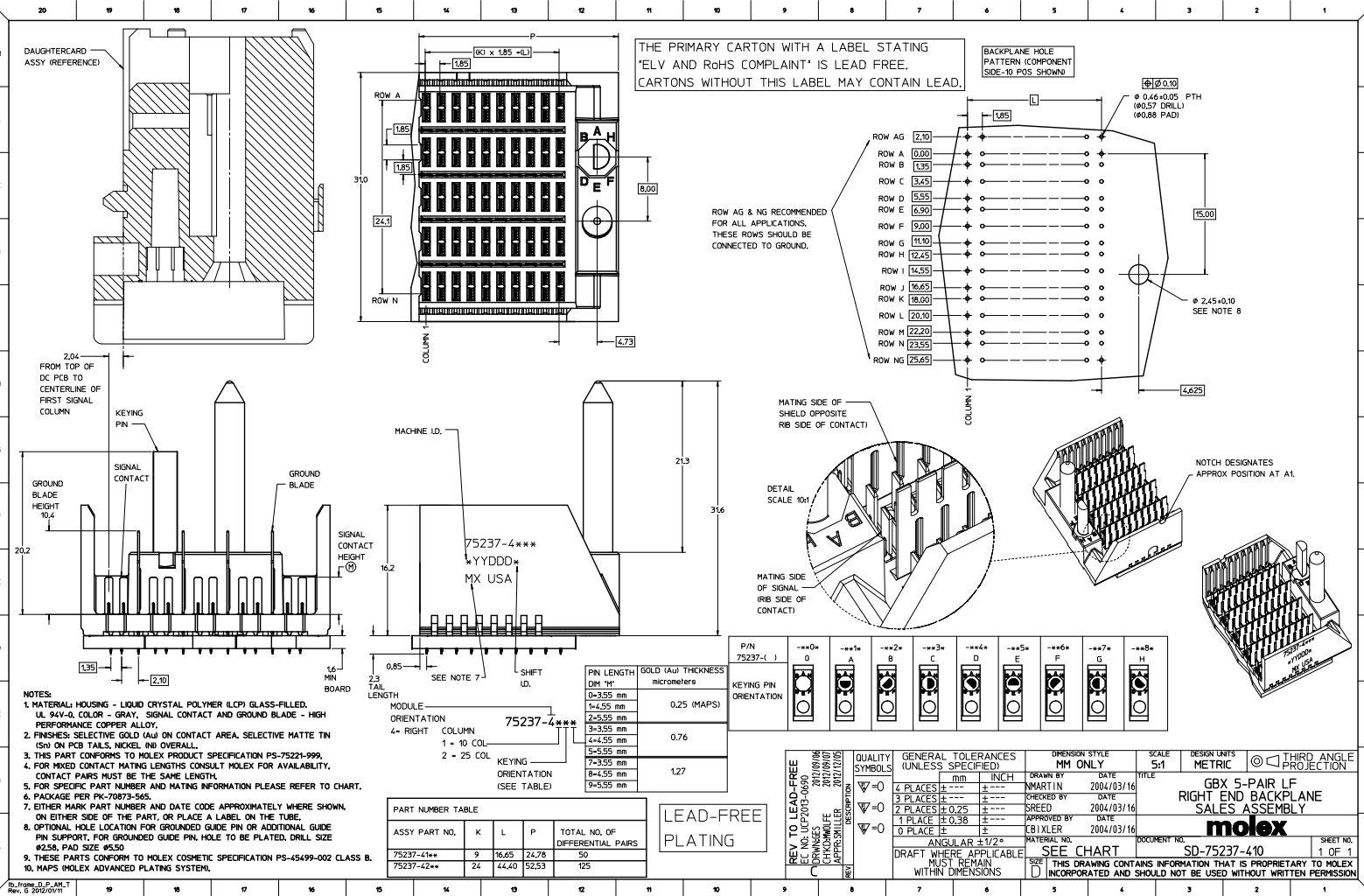
Stocking Distributor

Click to view price, real time Inventory, Delivery & Lifecycle Information:

[Molex Connector Corporation](#)  
[0752374125](#)

For any questions, you can email us directly:

[sales@integrated-circuit.com](mailto:sales@integrated-circuit.com)



THE PRIMARY CARTON WITH A LABEL STATING "ELV AND RoHS COMPLIANT" IS LEAD FREE. CARTONS WITHOUT THIS LABEL MAY CONTAIN LEAD.

BACKPLANE HOLE PATTERN (COMPONENT SIDE-10 POS SHOWN)

ROW AG & NG RECOMMENDED FOR ALL APPLICATIONS. THESE ROWS SHOULD BE CONNECTED TO GROUND.

MATING SIDE OF SHIELD OPPOSITE RIB SIDE OF CONTACT

DETAIL SCALE 10x

MATING SIDE OF SIGNAL (RIB SIDE OF CONTACT)

NOTCH DESIGNATES APPROX POSITION AT AL

- NOTES:**
1. MATERIAL: HOUSING - LIQUID CRYSTAL POLYMER (LCP) GLASS-FILLED, UL 94V-0, COLOR - GRAY, SIGNAL CONTACT AND GROUND BLADE - HIGH PERFORMANCE COPPER ALLOY.
  2. FINISHES: SELECTIVE GOLD (Au) ON CONTACT AREA, SELECTIVE MATTE TIN (Sn) ON PCB TAILS, NICKEL (Ni) OVERALL.
  3. THIS PART CONFORMS TO MOLEX PRODUCT SPECIFICATION PS-75221-999.
  4. FOR MIXED CONTACT MATING LENGTHS CONSULT MOLEX FOR AVAILABILITY, CONTACT PAIRS MUST BE THE SAME LENGTH.
  5. FOR SPECIFIC PART NUMBER AND MATING INFORMATION PLEASE REFER TO CHART.
  6. PACKAGE PER PK-70873-565.
  7. EITHER MARK PART NUMBER AND DATE CODE APPROXIMATELY WHERE SHOWN, ON EITHER SIDE OF THE PART, OR PLACE A LABEL ON THE TUBE.
  8. OPTIONAL HOLE LOCATION FOR GROUNDED GUIDE PIN OR ADDITIONAL GUIDE PIN SUPPORT. FOR GROUNDED GUIDE PIN HOLE TO BE PLATED, DRILL SIZE #258, PAD SIZE #550.
  9. THESE PARTS CONFORM TO MOLEX COSMETIC SPECIFICATION PS-45499-002 CLASS B.
  10. MAPS (MOLEX ADVANCED PLATING SYSTEM).

PIN LENGTH DIM "I"	GOLD (Au) THICKNESS micrometers
0-3.95 mm	0.25 (MAPS)
4-4.55 mm	
5-5.55 mm	0.76
6-6.55 mm	
7-7.55 mm	1.27
8-8.55 mm	
9-9.55 mm	

P/N	0	1	2	3	4	5	6	7	8
75237-1									

PART NUMBER TABLE				
ASSY PART NO.	K	L	P	TOTAL NO. OF DIFFERENTIAL PAIRS
75237-41**	9	16.65	24.78	50
75237-42**	24	44.40	52.53	125

LEAD-FREE PLATING

<b>REV TO LEAD-FREE</b> EC NO. UPE2013-0690 DRAWINGS: 2012/09/06 CHECKED: 2012/09/07 APPROVED: 2012/07/05 PREPARED:	<b>QUALITY SYMBOLS</b> ∇=0 ∇=0 ∇=0	<b>GENERAL TOLERANCES (UNLESS SPECIFIED)</b> 4 PLACES ±0.15 mm 3 PLACES ±0.25 mm 2 PLACES ±0.38 mm 1 PLACE ±0.38 mm	<b>DIMENSION STYLE</b> MM ONLY	<b>SCALE</b> 5:1	<b>DESIGN UNITS</b> METRIC	<b>THIRD ANGLE PROJECTION</b>	
	<b>DRAFT WHERE APPLICABLE MUST REMAIN WITHIN DIMENSIONS</b>	<b>ANGULAR ±1/2°</b>	<b>MATERIAL NO.</b> SEE CHART	<b>DATE</b> 2004/03/16	<b>TITLE</b> GBX 5-PAIR LF RIGHT END BACKPLANE SALES ASSEMBLY	<b>DATE</b> 2004/03/16	<b>DATE</b> 2004/03/16
	<b>APPROVED BY</b> CBIHLER	<b>APPROVED BY</b> CBIHLER	<b>APPROVED BY</b> CBIHLER	<b>APPROVED BY</b> CBIHLER	<b>APPROVED BY</b> CBIHLER	<b>APPROVED BY</b> CBIHLER	<b>APPROVED BY</b> CBIHLER
	<b>MOLEX</b>	<b>MOLEX</b>	<b>MOLEX</b>	<b>MOLEX</b>	<b>MOLEX</b>	<b>MOLEX</b>	<b>MOLEX</b>