

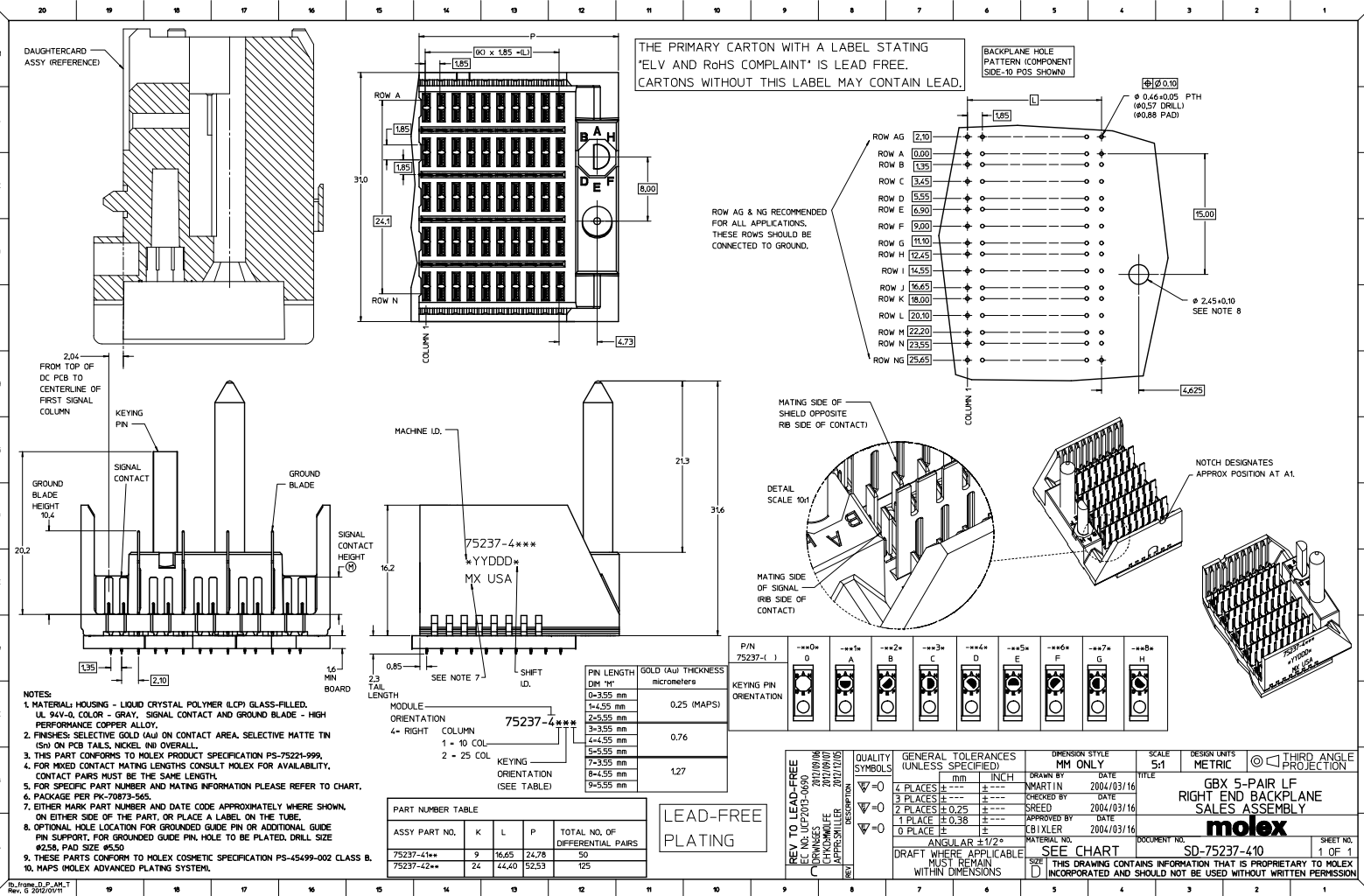
Excellent Integrated System Limited

Stocking Distributor

Click to view price, real time Inventory, Delivery & Lifecycle Information:

[Molex Connector Corporation](#)
[0752374215](#)

For any questions, you can email us directly:
sales@integrated-circuit.com



THE PRIMARY CARTON WITH A LABEL STATING "ELV AND RoHS COMPLIANT" IS LEAD FREE. THESE ROWS SHOULD BE CONNECTED TO GROUND. CARTONS WITHOUT THIS LABEL MAY CONTAIN LEAD.

BACKPLANE HOLE PATTERN (COMPONENT SIDE-10 POS SHOWN)

ROW AG & NG RECOMMENDED FOR ALL APPLICATIONS. THESE ROWS SHOULD BE CONNECTED TO GROUND.

MATING SIDE OF SHIELD OPPOSITE RIB SIDE OF CONTACT

DETAIL SCALE 10x

MATING SIDE OF SIGNAL (RIB SIDE OF CONTACT)

NOTCH DESIGNATES APPROX POSITION AT AL

- NOTES:**
1. MATERIAL: HOUSING - LIQUID CRYSTAL POLYMER (LCP) GLASS-FILLED, UL 94V-0, COLOR - GRAY, SIGNAL CONTACT AND GROUND BLADE - HIGH PERFORMANCE COPPER ALLOY.
 2. FINISHES: SELECTIVE GOLD (Au) ON CONTACT AREA, SELECTIVE MATTE TIN (Sn) ON PCB TAILS, NICKEL (Ni) OVERALL.
 3. THIS PART CONFORMS TO MOLEX PRODUCT SPECIFICATION PS-75221-999.
 4. FOR MIXED CONTACT MATING LENGTHS CONSULT MOLEX FOR AVAILABILITY, CONTACT PAIRS MUST BE THE SAME LENGTH.
 5. FOR SPECIFIC PART NUMBER AND MATING INFORMATION PLEASE REFER TO CHART.
 6. PACKAGE PER PK-70873-565.
 7. EITHER MARK PART NUMBER AND DATE CODE APPROXIMATELY WHERE SHOWN, ON EITHER SIDE OF THE PART, OR PLACE A LABEL ON THE TUBE.
 8. OPTIONAL HOLE LOCATION FOR GROUNDED GUIDE PIN OR ADDITIONAL GUIDE PIN SUPPORT. FOR GROUNDED GUIDE PIN HOLE TO BE PLATED, DRILL SIZE #258, PAD SIZE #550.
 9. THESE PARTS CONFORM TO MOLEX COSMETIC SPECIFICATION PS-45499-002 CLASS B.
 10. MAPS (MOLEX ADVANCED PLATING SYSTEM).

PIN LENGTH DMT #1	GOLD (Au) THICKNESS micrometers
0-3.95 mm	0.25 (MAPS)
1-4.55 mm	
2-5.55 mm	
3-5.55 mm	
4-5.55 mm	0.76
5-5.55 mm	
7-3.95 mm	
8-4.55 mm	1.27
9-5.55 mm	

P/N	0	1	2	3	4	5	6	7	8
75237-4									

PART NUMBER TABLE				
ASSY PART NO.	K	L	P	TOTAL NO. OF DIFFERENTIAL PAIRS
75237-41**	9	16.65	24.78	50
75237-42**	24	44.40	52.53	125

LEAD-FREE PLATING

REV TO LEAD-FREE
EC NO. UFP2013-0690
DRAWINGS: 2012/09/06
CHECKED: 2012/09/07
APPROVED: 2012/07/05

QUALITY SYMBOLS	GENERAL TOLERANCES (UNLESS SPECIFIED)	MM ONLY	SCALE	DESIGN UNITS	THIRD ANGLE PROJECTION
∇=0	4 PLACES ±---	INCH	5:1	METRIC	
∇=0	3 PLACES ±---	---			
∇=0	2 PLACES ±0.25	---			
∇=0	1 PLACE ±0.38	---			
	ANGULAR ±1/2°				

DRAWN BY	DATE	TITLE
MMARTIN	2004/03/16	GBX 5-PAIR LF RIGHT END BACKPLANE SALES ASSEMBLY
CHECKED BY	DATE	
SREED	2004/03/16	
APPROVED BY	DATE	
CBIXLER	2004/03/16	

molex

DOCUMENT NO. SD-75237-410 SHEET NO. 1 OF 1