

Excellent Integrated System Limited

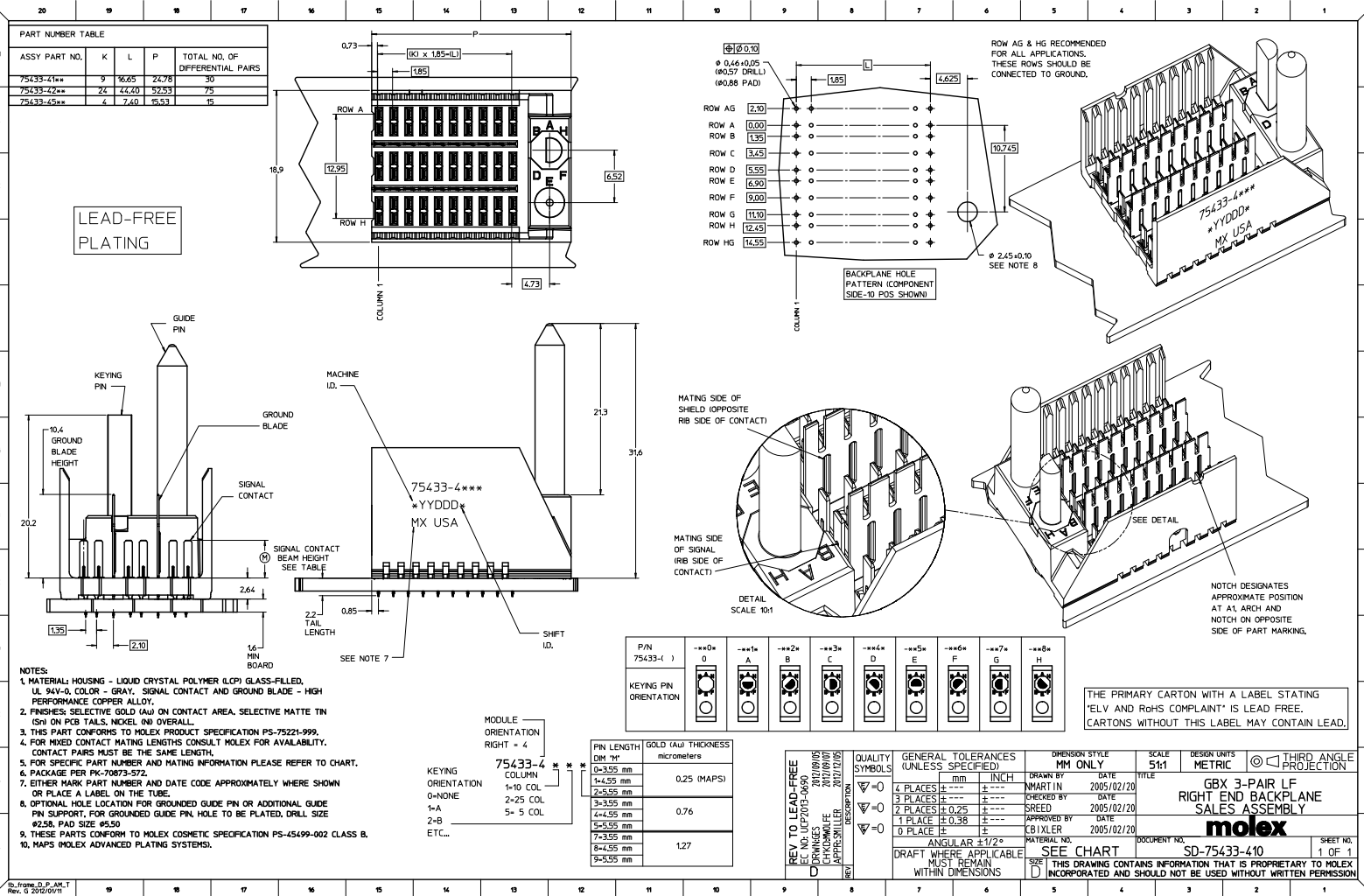
Stocking Distributor

Click to view price, real time Inventory, Delivery & Lifecycle Information:

[Molex Connector Corporation](#)
[0754334203](#)

For any questions, you can email us directly:

sales@integrated-circuit.com



PART NUMBER TABLE

ASSY PART NO.	K	L	P	TOTAL NO. OF DIFFERENTIAL PAIRS
75433-41**	9	16.05	24.78	30
75433-42**	24	44.40	52.53	75
75433-45**	4	7.40	15.53	16

LEAD-FREE PLATING

- NOTES:
1. MATERIAL: HOUSING - LIQUID CRYSTAL POLYMER (LCP) GLASS-FILLED, UL 94V-0, COLOR - GRAY. SIGNAL CONTACT AND GROUND BLADE - HIGH PERFORMANCE COPPER ALLOY.
 2. FINISHES: SELECTIVE GOLD (Au) ON CONTACT AREA, SELECTIVE MATTE TIN (Sn) ON PCB TAILS, NICKEL (Ni) OVERALL.
 3. THIS PART CONFORMS TO MOLEX PRODUCT SPECIFICATION PS-75221-999.
 4. FOR MIXED CONTACT MATING LENGTHS CONSULT MOLEX FOR AVAILABILITY. CONTACT PAIRS MUST BE THE SAME LENGTH.
 5. FOR SPECIFIC PART NUMBER AND MATING INFORMATION PLEASE REFER TO CHART.
 6. PACKAGE PER PK-70873-572.
 7. EITHER MARK PART NUMBER AND DATE CODE APPROXIMATELY WHERE SHOWN OR PLACE A LABEL ON THE TUBE.
 8. OPTIONAL HOLE LOCATION FOR GROUNDED GUIDE PIN OR ADDITIONAL GUIDE PIN SUPPORT, FOR GROUNDED GUIDE PIN, HOLE TO BE PLATED, DRILL SIZE #258, PAD SIZE #559.
 9. THESE PARTS CONFORM TO MOLEX COSMETIC SPECIFICATION PS-45499-002 CLASS B.
 10. MAPS (MOLEX ADVANCED PLATING SYSTEMS).

KEYING ORIENTATION RIGHT - 4

KEYING ORIENTATION	COLUMN	1-10 COL.	2-25 COL.	5-5 COL.
0-NONE	1-10 COL.	2-25 COL.	5-5 COL.	
1-A				
2-B				
ETC...				

PIN LENGTH (M)	GOLD (Au) THICKNESS (micrometers)
0-3.55 mm	0.25 (MAPS)
1-4.55 mm	
2-5.55 mm	
3-5.55 mm	0.76
4-4.55 mm	
5-5.55 mm	
7-3.55 mm	
8-4.55 mm	1.27
9-5.55 mm	

P/N	---0	---1	---2	---3	---4	---5	---6	---7	---8
75433(-)	0	A	B	C	D	E	F	G	H
KEYING PIN ORIENTATION									

THE PRIMARY CARTON WITH A LABEL STATING 'ELV AND RoHS COMPLIANT' IS LEAD FREE. CARTONS WITHOUT THIS LABEL MAY CONTAIN LEAD.

REV TO LEAD-FREE EC NO. UFP203-0620 D 2/07/05 CHICKWILE 2/07/05 APPROVALS: 2/07/05 REV	QUALITY SYMBOLS ∇=0 ∇=1 ∇=0	GENERAL TOLERANCES (UNLESS SPECIFIED) 4 PLACES ±--- mm 3 PLACES ±--- INCH 2 PLACES ±0.25 1 PLACE ±0.38 0 PLACE ± ANGULAR ±1/2°	DIMENSION STYLE MM ONLY	SCALE 5:1	DESIGN UNITS METRIC	THIRD ANGLE PROJECTION	
	DRAWN BY NMARTIN	DATE 2005/02/20	CHECKED BY SREED	DATE 2005/02/20	APPROVED BY CBIXLER	DATE 2005/02/20	MATERIAL NO. SEE CHART
	DRAFT WHERE APPLICABLE MUST REMAIN WITHIN DIMENSIONS						

GBX 3-PAIR LF
 RIGHT END BACKPLANE
 SALES ASSEMBLY
molex
 DOCUMENT NO. SD-75433-410
 SHEET NO. 1 OF 1