

## Excellent Integrated System Limited

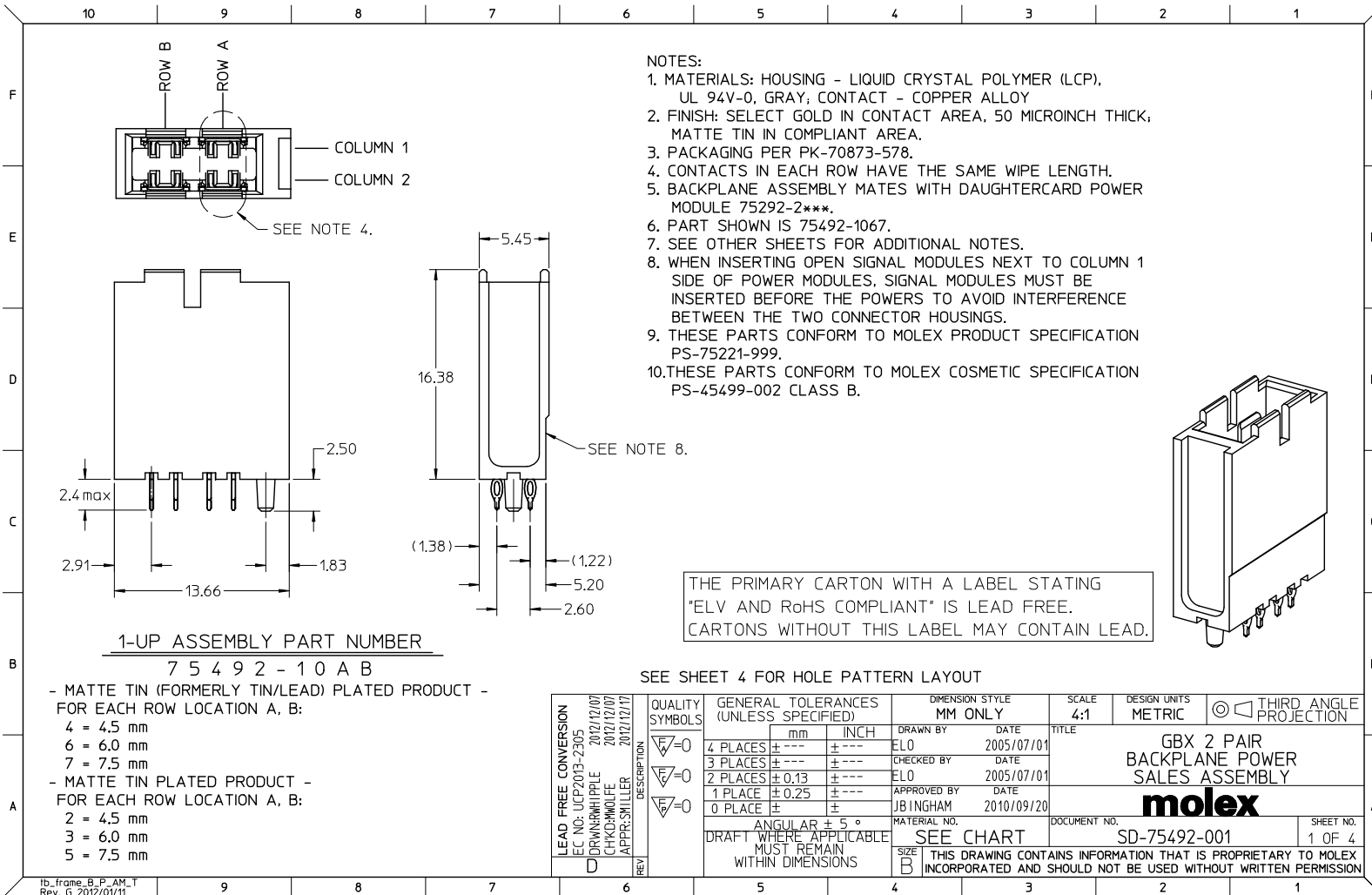
Stocking Distributor

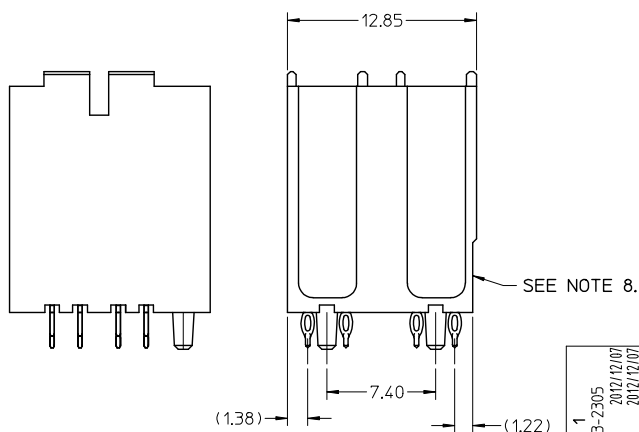
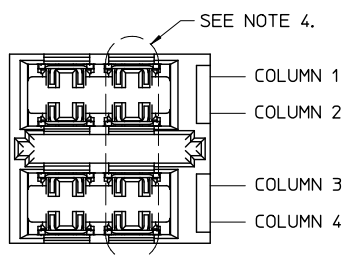
Click to view price, real time Inventory, Delivery & Lifecycle Information:

[Molex Connector Corporation](#)  
[0754921044](#)

For any questions, you can email us directly:

[sales@integrated-circuit.com](mailto:sales@integrated-circuit.com)





2-UP ASSEMBLY PART NUMBER

7 5 4 9 2 - 2 0 A B

- MATTE TIN (FORMERLY TIN/LEAD) PLATED PRODUCT -  
FOR EACH ROW LOCATION A, B:

4 = 4.5 mm

6 = 6.0 mm

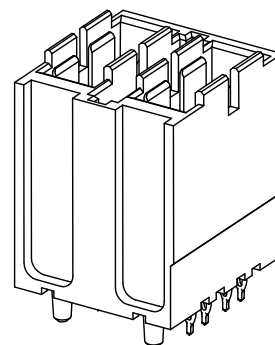
7 = 7.5 mm

- MATTE TIN PLATED PRODUCT -  
FOR EACH ROW LOCATION A, B:

2 = 4.5 mm

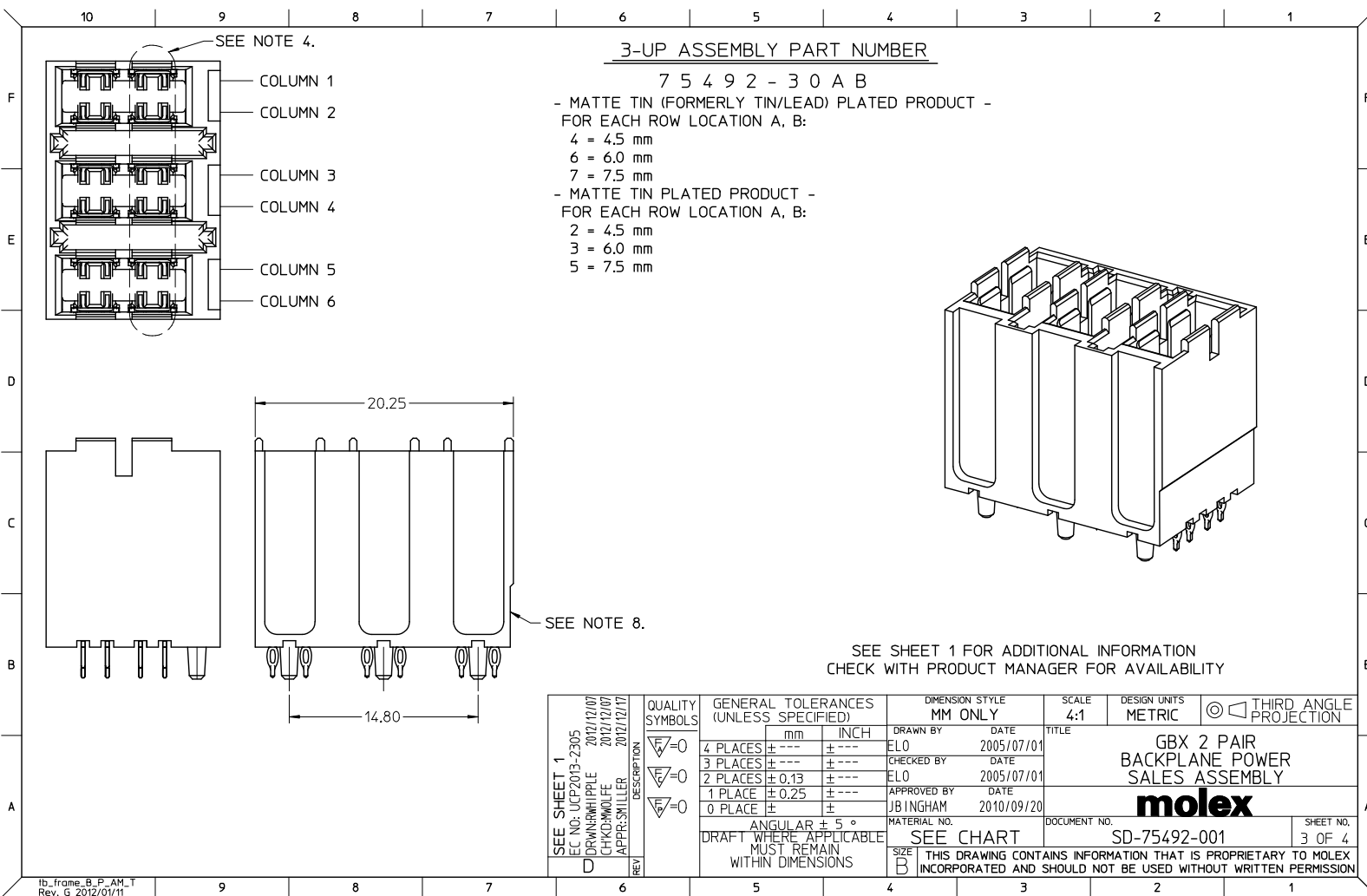
3 = 6.0 mm

5 = 7.5 mm



SEE SHEET 1 FOR ADDITIONAL INFORMATION  
CHECK WITH PRODUCT MANAGER FOR AVAILABILITY

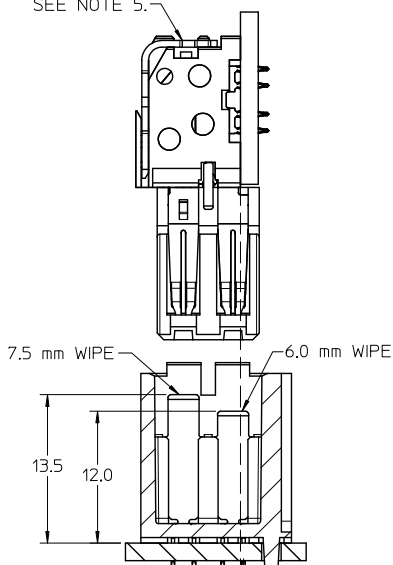
SEE SHEET 1	EC NO: UCP2013-2305 DRAWN BY: DR/IN/HP/LE 2012/12/07 CHKD BY: CH/KH/W/LE 2012/12/07 APPR BY: SM/LLER 2012/12/17	DESCRIPTION	QUALITY SYMBOLS	GENERAL TOLERANCES (UNLESS SPECIFIED)				DIMENSION STYLE		SCALE	DESIGN UNITS	THIRD ANGLE PROJECTION			
				mm		INCH		MM ONLY		4:1	METRIC				
				4 PLACES	±	---	±	---	ELO	2005/07/01	TITLE GBX 2 PAIR BACKPLANE POWER SALES ASSEMBLY  <b>molex</b>  DOCUMENT NO. SD-75492-001				
				3 PLACES	±	---	±	---	CHECKED BY	DATE					
				2 PLACES	±	0.13	±	---	ELO	2005/07/01					
				1 PLACE	±	0.25	±	---	APPROVED BY	DATE					
				0 PLACE	±		±		JB INGHAM	2010/09/20					
				ANGULAR ± 5 °				MATERIAL NO.		SHEET NO. 2 OF 4					
				DRAFT WHERE APPLICABLE				SEE CHART							
				MUST REMAIN WITHIN DIMENSIONS											
REV				SIZE B		THIS DRAWING CONTAINS INFORMATION THAT IS PROPRIETARY TO MOLEX INCORPORATED AND SHOULD NOT BE USED WITHOUT WRITTEN PERMISSION									



**HOLE PATTERN FOR 1-UP ASSEMBLY**

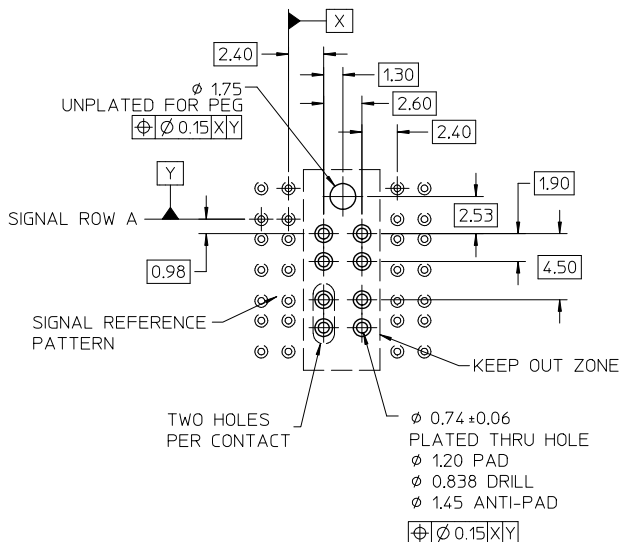
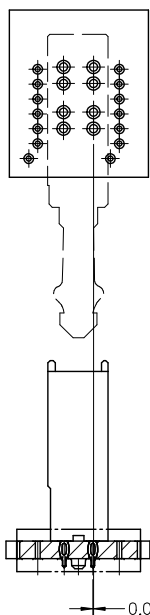
- 1.) ADD 7.40 FROM CENTERLINES OF PEG FOR MULTIPLE UP ASSEMBLIES
- 2.) USE 5.55 FROM CENTERLINE TO CENTERLINE OF PEG FOR INDIVIDUAL POWER MODULES STACKED NEXT TO EACH OTHER.


SEE NOTE 5.



SEE NOTE 6.

0.27  
DC BOARD EDGE TO  
CENTERLINE OF BP TAIL



SEE SHEET 1 EC NO: UCP2013-2305 DRAWN BY: EL0 CHECKED BY: EL0 APPROVED BY: JB INGHAM DATE: 2012/12/07 DATE: 2012/12/07 DATE: 2010/09/20	DESCRIPTION	QUALITY SYMBOLS	GENERAL TOLERANCES (UNLESS SPECIFIED)				DIMENSION STYLE MM ONLY		SCALE 4:1	DESIGN UNITS METRIC	 THIRD ANGLE PROJECTION
			mm		INCH		DRAWN BY EL0	DATE 2005/07/01	TITLE GBX 2 PAIR BACKPLANE POWER SALES ASSEMBLY		
			4 PLACES ± --- ± ---				CHECKED BY EL0		DATE 2005/07/01		
			3 PLACES ± --- ± ---				APPROVED BY JB INGHAM		DATE 2010/09/20		
			2 PLACES ± 0.13 ± ---				MATERIAL NO.		DOCUMENT NO.		
			1 PLACE ± 0.25 ± ---				SD-75492-001		SHEET NO. 4 OF 4		
			0 PLACE ± ± ---				THIS DRAWING CONTAINS INFORMATION THAT IS PROPRIETARY TO MOLEX INCORPORATED AND SHOULD NOT BE USED WITHOUT WRITTEN PERMISSION				
			ANGULAR ± 5°								
			DRAFT WHERE APPLICABLE MUST REMAIN WITHIN DIMENSIONS								
			SEE CHART								