

Excellent Integrated System Limited

Stocking Distributor

Click to view price, real time Inventory, Delivery & Lifecycle Information:

[Molex Connector Corporation](#)
[0755486156](#)

For any questions, you can email us directly:

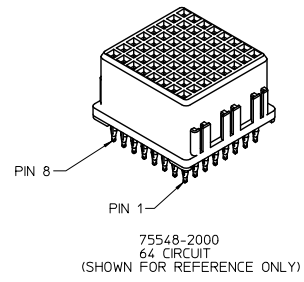
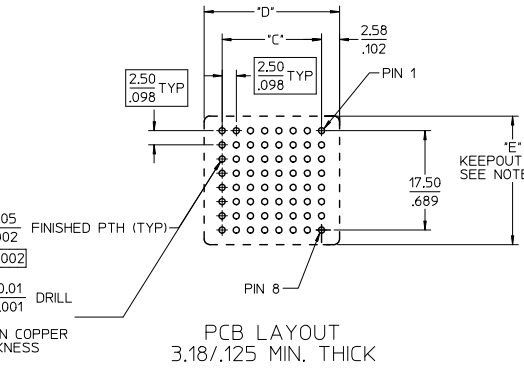
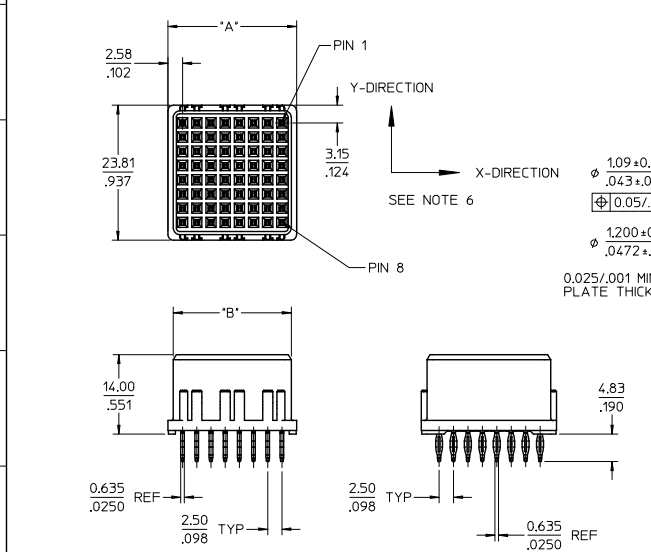
sales@integrated-circuit.com

PART NUMBER	CIRCUIT SIZE	DIM "A"	DIM "B"	DIM "C"	DIM "D"	MATING MODULE
75548-6000	64	22.66/.892	20.76/.817	17.50/.689	27.50/1.08	75568-1000
75548-6056	56	20.16/.794	18.26/.719	15.00/.591	25.00/.984	75568-1056
75548-6048	48	17.66/.695	15.26/.620	12.50/.492	22.50/.885	75568-1048
75548-6040	40	15.16/.597	13.26/.522	10.00/.394	20.00/.787	75568-1040
75548-6032	32	12.66/.498	10.76/.424	7.50/.295	17.50/.689	75568-1032
75548-6024	24	10.16/.400	8.26/.325	5.00/.197	15.00/.590	75568-1024

PLATING

30µ IN MIN SELECT HARD GOLD IN CONTACT AREA WITH 100µ IN MIN SELECT TIN IN TAIL AREA OVER 50µ IN MIN NICKEL OVERALL

- NOTES:
- MATERIALS:
 - HOUSING: 30% GLASS FILLED, LCP 94V-0, COLOR: BLACK
 - TERMINALS: COPPER ALLOY
 - PLATING: PER ES-88 - SEE CHART
 - LUBRICATION: EB1 IN CONTACT AREA
 - SEE CHART FOR REFERENCE DOCUMENTS
 - AVERAGE INSERTION FORCE INTO PCB IS 8.2 Kg/18 LBS PER TAIL
 - MODULE ASSEMBLY IS RoHS COMPLIANT
 - GATHERABILITY: ±0.65/.026 X-DIRECTION
±1.30/.051 Y-DIRECTION
 - TERMINAL RETENTION INTO HOUSING 0.45 Kg/1.0 LB
 - KEEPOUT ZONE DIMENSION "E":
25.00/.984 ON PCB SURFACE
26.00/1.024 AT 3.50/1.38 ABOVE PCB SURFACE
46.00/1.811 AT 9.00/3.54 ABOVE PCB SURFACE
 - RECEPTACLE MATES WITH PLUG ASSEMBLY: 75568-5***



REFERENCE DOCUMENTS

PS-75431-999	PRODUCT SPECIFICATION: PERFORMANCE AND RATINGS
SD-75541-***	MODULE CONFIGURATION DRAWING
AS-75541-0000	APPLICATION SPECIFICATION

QUALITY SYMBOLS	GENERAL TOLERANCES (UNLESS SPECIFIED)		DIMENSION STYLE		SCALE	DESIGN UNITS	THIRD ANGLE PROJECTION
	mm	INCH	MM/IN	DATE			
▽=0	4 PLACES ±	---	DRAWN BY	2005/04/11	2:1	METRIC	EXTREME POWERMASS SIGNAL MODULE RECEPTACLE
▽=0	3 PLACES ±	±.008	CHECKED BY	DATE			
▽=0	2 PLACES ±	0.20 ±.013	APPROVED BY	DATE	molex		SD-75548-100
▽=0	1 PLACE ±	0.33 ±	MATERIAL NO.	DOCUMENT NO.	SHEET NO.		
▽=0	0 PLACE ±	±	ANGULAR ±1/2°	DATE	1 OF 1		

REMOVE TIN/LEAD
EC NO: UCP2015-4551
DRAWN BY: ADIRANWIPPLE 2013/04/10
CHECKED BY: CHIKKABANDRA 2014/02/20
APPROVED BY: APPR:SMILLER 2014/04/14

ANGULAR ±1/2°
DRAFT WHERE APPLICABLE MUST REMAIN WITHIN DIMENSIONS

SEE CHART

THIS DRAWING CONTAINS INFORMATION THAT IS PROPRIETARY TO MOLEX INCORPORATED AND SHOULD NOT BE USED WITHOUT WRITTEN PERMISSION