

## Excellent Integrated System Limited

Stocking Distributor

Click to view price, real time Inventory, Delivery & Lifecycle Information:

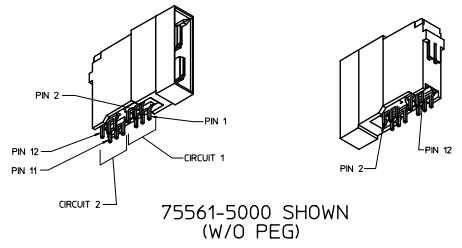
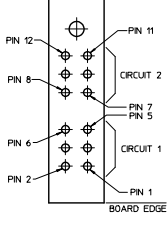
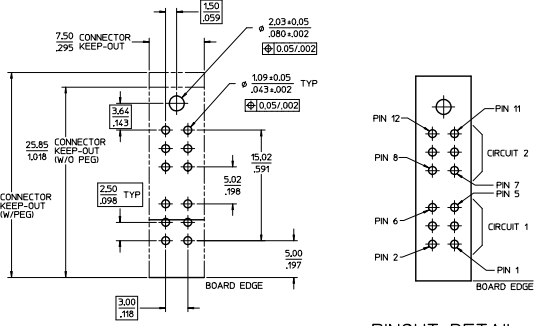
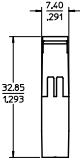
[Molex Connector Corporation](#)  
[0755615000](#)

For any questions, you can email us directly:

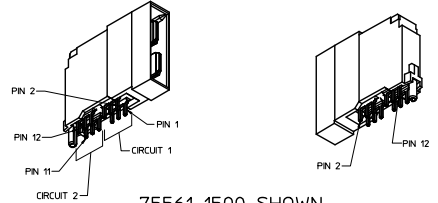
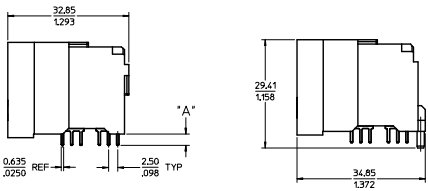
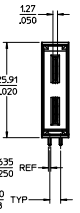
[sales@integrated-circuit.com](mailto:sales@integrated-circuit.com)

| PART NUMBER | DESCRIPTION            | DIM "A" PC TAIL LENGTH | PLATING  |
|-------------|------------------------|------------------------|--|
| 75561-5000  | SHORT PC TAIL - NO PEG | 3.07/.121              | 30µ INCH MIN SELECT HARD GOLD IN CONTACT AREA WITH 100µ INCH MN SELECT TIN IN TAIL AREA OVER 50µ INCH MIN NICKEL OVERALL |
| 75561-5001  | LONG PC TAIL - NO PEG  | 3.81/.150              |  |
| 75561-1500  | SHORT PC TAIL - PEG    | 3.07/.121              | 30µ INCH MIN SELECT HARD GOLD IN CONTACT AREA WITH 100µ INCH MN SELECT TIN IN TAIL AREA OVER 50µ INCH MIN NICKEL OVERALL |
| 75561-1501  | LONG PC TAIL - PEG     | 3.81/.150              |  |

- NOTES:
- MATERIALS:  
- HOUSING: 30% GLASS FILLED, LCP 94V-0, COLOR: BLACK  
- TERMINALS: COPPER ALLOY  
- PLATING: PER ES-88 - SEE CHART
  - SEE CHART FOR REFERENCE DOCUMENTS
  - PLUG MATES WITH RECEPTACLE ASSEMBLIES: 75545-5000 & 75545-5001
  - MODULE IS DESIGNED FOR SOLDERING TO THE PCB
  - MODULE ASSEMBLY IS RoHS COMPLIANT
  - GATHERABILITY: +0.65/.026 X-DIRECTION  
+1.30/.051 Y-DIRECTION



75561-5000 SHOWN (W/O PEG)



75561-1500 SHOWN (W/PEG)

75561-500\* SHOWN (W/O PEG)

SAME AS 75561-500\* EXCEPT AS SHOWN

| REFERENCE DOCUMENTS |  |
|---------------------|--|
| PS-75431-999        | PRODUCT SPECIFICATION: PERFORMANCE AND RATINGS |
| SD-75555-***        | FINAL ASSEMBLY CONFIGURATION DRAWING           |

| QUALITY SYMBOLS | GENERAL TOLERANCES (UNLESS SPECIFIED) | DIMENSION STYLE |      | SCALE | DESIGN UNITS | THIRD ANGLE PROJECTION |
|-----------------|---------------------------------------|-----------------|------|-------|--------------|------------------------|
|                 |                                       | MM              | INCH |       |              |                        |
| ∇=0             | 4 PLACES ±.000                        | mm              | INCH | 2:1   | METRIC       | ⊕                      |
| ∇=0             | 3 PLACES ±.008                        |                 |      |       |              |                        |
| ∇=0             | 2 PLACES ±0.20                        |                 |      |       |              |                        |
| ∇=0             | 1 PLACE ±0.33                         |                 |      |       |              |                        |
| ∇=0             | ANGULAR ±1/2°                         |                 |      |       |              |                        |

|                               |                  |                      |                  |                                      |
|-------------------------------|------------------|----------------------|------------------|--------------------------------------|
| CONTRACT MGR. MARGARET GIBNEY | DATE: 2010/10/18 | DRAWN BY: ADRIAN MOL | DATE: 2005/04/19 | TITLE: POWERMASS 80 AMP MODULE, PLUG |
| EC NO. UEP2005-2716           | DATE: 2010/10/18 | CHECKED BY: MDATA    | DATE: 2005/04/19 |                                      |
| DRW. NO. 2010/10/18           | DATE: 2010/10/18 | APPROVED BY: APATEL  | DATE: 2010/10/18 |                                      |
| CHK. NO. 2010/10/18           | DATE: 2010/10/18 |                      |                  |                                      |
| APP. NO. 2010/10/18           | DATE: 2010/10/18 |                      |                  |                                      |
| REV. NO. 2010/10/18           | DATE: 2010/10/18 |                      |                  |                                      |

|              |           |   |              |           |        |
|--------------|-----------|---|--------------|-----------|--------|
| MATERIAL NO. | SEE CHART | DOCUMENT NO.  | SD-75561-100 | SHEET NO. | 1 OF 1 |
| SIZE         | D         | THIS DRAWING CONTAINS INFORMATION THAT IS PROPRIETARY TO MOLEX INCORPORATED AND SHOULD NOT BE USED WITHOUT WRITTEN PERMISSION |              |           |        |