

## **Excellent Integrated System Limited**

Stocking Distributor

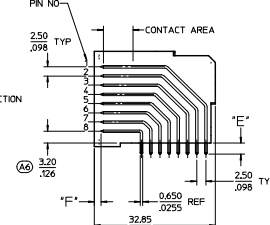
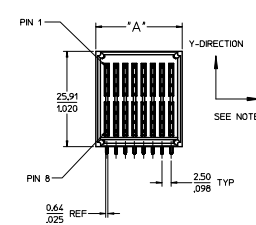
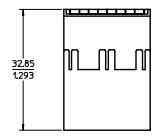
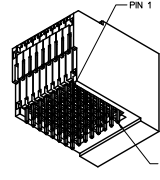
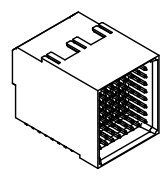
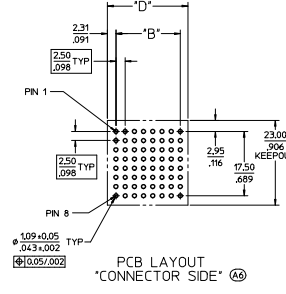
Click to view price, real time Inventory, Delivery & Lifecycle Information:

[Molex Connector Corporation](#)  
[0755685048](#)

For any questions, you can email us directly:  
[sales@integrated-circuit.com](mailto:sales@integrated-circuit.com)

PART NUMBER	CIRCUIT SIZE	DIM 'A'	DIM 'B'	DIM 'D'	DIM 'E' TAIL	DIM 'F' PIN	MATING MODULE	PLATING
75568-5000	64	23.50/925	17.50/689	27.50/108	3.07±0.10/ .12±.004	2.51/099	75548-6000	30µ INCH MIN SELECT HARD GOLD IN CONTACT AREA WITH 100µ INCH MIN SELECT TIN IN TAIL AREA OVER 50µ INCH MIN NICKEL OVERALL
75568-5056	56	21.00/827	15.00/591	25.00/984			75548-6056	
75568-5048	48	18.50/728	12.50/492	22.50/885			75548-6048	
75568-5040	40	16.00/630	10.00/394	20.00/787			75548-6040	
75568-5032	32	13.50/531	7.50/295	17.50/689	3.07±0.10/ .12±.004	2.80/110 PIN 8	75548-6032	
75568-5024	24	11.00/433	5.00/197	15.00/590			75548-6024	
75568-5100	64	23.50/925	17.50/689	27.50/108			75548-6000	
75568-5156	56	21.00/827	15.00/591	25.00/984			75548-6056	
75568-5148	48	18.50/728	12.50/492	22.50/885	3.07±0.10/ .12±.004	1.80/071 PINS 1-7	75548-6048	
75568-5140	40	16.00/630	10.00/394	20.00/787			75548-6040	
75568-5132	32	13.50/531	7.50/295	17.50/689			75548-6032	
75568-5124	24	11.00/433	5.00/197	15.00/590			75548-6024	
75568-5200	64	23.50/925	17.50/689	27.50/108	3.84±0.10/ .15±.004	2.51/099	75548-6000	
75568-5256	56	21.00/827	15.00/591	25.00/984			75548-6056	
75568-5248	48	18.50/728	12.50/492	22.50/885			75548-6048	
75568-5240	40	16.00/630	10.00/394	20.00/787			75548-6040	
75568-5232	32	13.50/531	7.50/295	17.50/689	3.84±0.10/ .15±.004	2.51/099	75548-6032	
75568-5224	24	11.00/433	5.00/197	15.00/590			75548-6024	

- NOTES:
- MATERIALS:
    - HOUSING: 30% GLASS FILLED LCP 94V-0, COLOR: BLACK
    - TERMINALS: COPPER ALLOY
    - PLATING: PER ES-88 - SEE CHART
    - LUBRICATION: EBI IN CONTACT AREA
  - SEE CHART FOR REFERENCE DOCUMENTS
  - MODULE IS DESIGNED FOR SOLDERING TO THE PCB
  - MODULE ASSEMBLY IS RQHS COMPLIANT
  - PLUG MATES WITH RECEPTACLE ASSEMBLIES: 75548-6\*\*\*
  - GATHERABILITY: +0.45/0.26 X-DIRECTION  
+1.30/0.91 Y-DIRECTION



75568-1000 64 CIRCUIT (SHOWN FOR REFERENCE ONLY)

REFERENCE DOCUMENTS	
PS-75431-999	PRODUCT SPECIFICATION: PERFORMANCE AND RATINGS
SD-75555-***	MODULE CONFIGURATION DRAWING

UPDATE PART NO. EC NO. IEP2005-284 DR/ANANDHIA 205/11/25 CH/CHANDRA 205/11/25 APP/PR/132/08 APPROVED REV	QUALITY SYMBOLS	GENERAL TOLERANCES (UNLESS SPECIFIED)	DIMENSION STYLE	SCALE	DESIGN UNITS	THIRD ANGLE PROJECTION
	4 PLACES ±.008 3 PLACES ±.008 2 PLACES ±0.20 ±.013 1 PLACE ±0.33 ±.013 ANGULAR ±1/2°	mm INCH	MM/IN	2:1	METRIC	
	DRAWN BY ADRA/INOL CHECKED BY M/ATA APPROVED BY APATEL DATE 2005/04/11 DATE 2005/04/11 DATE 2005/04/11	TITLE	EXTREME POWERMASS SIGNAL MODULE, PLUG			
	MATERIAL NO. SD-75568-100 DOCUMENT NO. 1 OF 1					