

## Excellent Integrated System Limited

Stocking Distributor

Click to view price, real time Inventory, Delivery & Lifecycle Information:

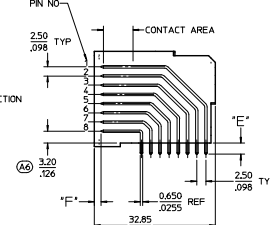
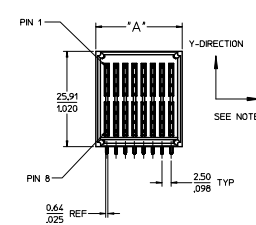
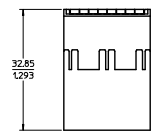
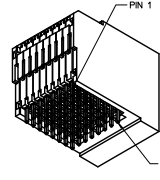
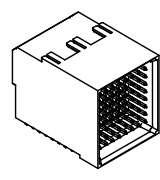
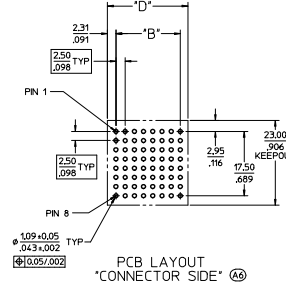
[Molex Connector Corporation](#)  
[0755685200](#)

For any questions, you can email us directly:

[sales@integrated-circuit.com](mailto:sales@integrated-circuit.com)

PART NUMBER	CIRCUIT SIZE	DIM 'A'	DIM 'B'	DIM 'D'	DIM 'E' TAIL	DIM 'F' PIN	MATING MODULE	PLATING
75568-5000	64	23.50/925	17.50/689	27.50/108	3.07±0.10/ .12±.004	2.51/099	75548-6000	30W INCH MIN SELECT HARD GOLD IN CONTACT AREA WITH 100W INCH MIN SELECT TIN IN TAIL AREA OVER 50W INCH MIN NICKEL OVERALL
75568-5056	56	21.00/827	15.00/591	25.00/984			75548-6056	
75568-5048	48	18.50/728	12.50/492	22.50/885			75548-6048	
75568-5040	40	16.00/630	10.00/394	20.00/787			75548-6040	
75568-5032	32	13.50/531	7.50/295	17.50/689	3.07±0.10/ .12±.004	2.80/110 PIN 8	75548-6032	
75568-5024	24	11.00/433	5.00/197	15.00/590			75548-6024	
75568-5100	64	23.50/925	17.50/689	27.50/108			75548-6000	
75568-5156	56	21.00/827	15.00/591	25.00/984			75548-6056	
75568-5148	48	18.50/728	12.50/492	22.50/885	3.07±0.10/ .12±.004	1.80/071 PINS 1-7	75548-6048	
75568-5140	40	16.00/630	10.00/394	20.00/787			75548-6040	
75568-5132	32	13.50/531	7.50/295	17.50/689			75548-6032	
75568-5124	24	11.00/433	5.00/197	15.00/590			75548-6024	
75568-5200	64	23.50/925	17.50/689	27.50/108	3.84±0.10/ .15±.004	2.51/099	75548-6000	
75568-5256	56	21.00/827	15.00/591	25.00/984			75548-6056	
75568-5248	48	18.50/728	12.50/492	22.50/885			75548-6048	
75568-5240	40	16.00/630	10.00/394	20.00/787			75548-6040	
75568-5232	32	13.50/531	7.50/295	17.50/689	3.84±0.10/ .15±.004	2.51/099	75548-6032	
75568-5224	24	11.00/433	5.00/197	15.00/590			75548-6024	

- NOTES:
- MATERIALS:
    - HOUSING: 30% GLASS FILLED LCP 94V-0, COLOR: BLACK
    - TERMINALS: COPPER ALLOY
    - PLATING: PER ES-88 - SEE CHART
    - LUBRICATION: EBI IN CONTACT AREA
  - SEE CHART FOR REFERENCE DOCUMENTS
  - MODULE IS DESIGNED FOR SOLDERING TO THE PCB
  - MODULE ASSEMBLY IS RQHS COMPLIANT
  - PLUG MATES WITH RECEPTACLE ASSEMBLIES: 75548-6\*\*\*
  - GATHERABILITY: +0.45/0.26 X-DIRECTION  
+1.30/0.91 Y-DIRECTION



75568-1000 64 CIRCUIT (SHOWN FOR REFERENCE ONLY)

UPDATE PART NO. DEC 10/12/2005-284 DR/ANANDRA 205/11/25 CH/CHANDRA 205/11/25 APP/PS/13/08 APPROVED/13/08 REV	QUALITY SYMBOLS	GENERAL TOLERANCES (UNLESS SPECIFIED)	DIMENSION STYLE	SCALE	DESIGN UNITS	THIRD ANGLE PROJECTION	
	4 PLACES ±.008 3 PLACES ±.008 2 PLACES ±0.20 ±.013 1 PLACE ±0.33 ±.013 ANGULAR ±1/2°	mm INCH --- --- ±.008 ±.008 ±0.20 ±.013 ±.013 ±.013	MM/IN	2:1	METRIC	DRAWN BY ADRA/INOL CHECKED BY MATA APPROVED BY APATEL DATE 2005/04/11 DATE 2005/04/11 DATE 2005/04/11	TITLE EXTREME POWERMASS SIGNAL MODULE, PLUG MOLEX INCORPORATED
	DRAFT WHERE APPLICABLE MUST REMAIN WITHIN DIMENSIONS	SEE CHART THIS DRAWING CONTAINS INFORMATION THAT IS PROPRIETARY TO MOLEX INCORPORATED AND SHOULD NOT BE USED WITHOUT WRITTEN PERMISSION	MATERIAL NO. SD-75568-100	DOCUMENT NO. 1 OF 1			
	REFERENCE DOCUMENTS PS-75431-999 PRODUCT SPECIFICATION: PERFORMANCE AND RATINGS SD-75555-*** MODULE CONFIGURATION DRAWING						