

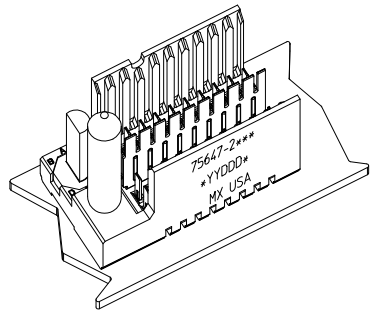
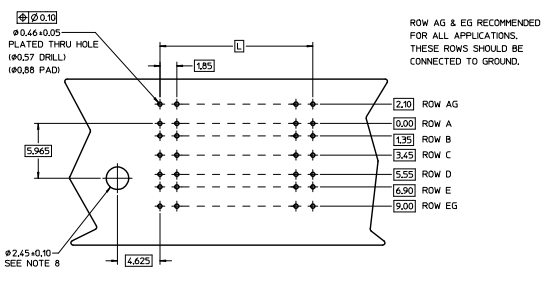
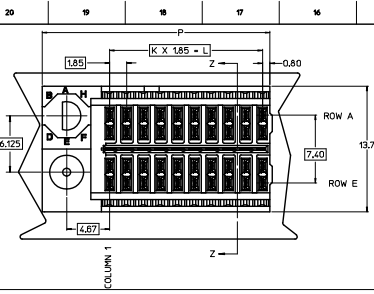
Excellent Integrated System Limited

Stocking Distributor

Click to view price, real time Inventory, Delivery & Lifecycle Information:

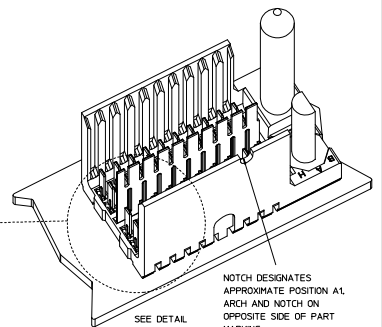
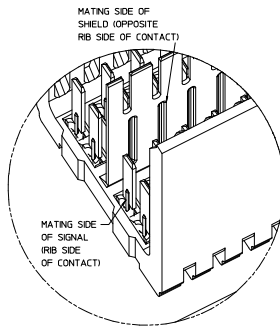
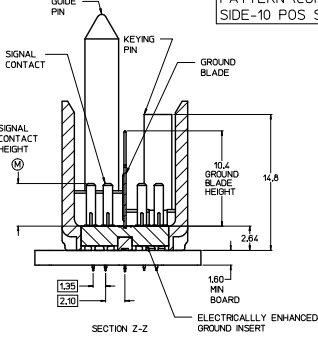
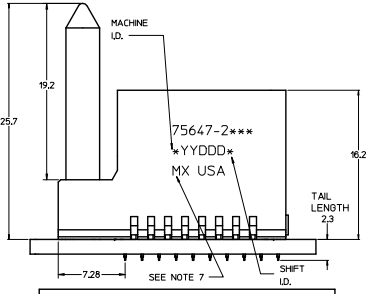
[Molex Connector Corporation](#)
[0756472104](#)

For any questions, you can email us directly:
sales@integrated-circuit.com



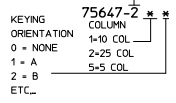
THE PRIMARY CARTON WITH A LABEL STATING "ELV AND RoHS COMPLAINT" IS LEAD FREE. CARTONS WITHOUT THIS LABEL MAY CONTAIN LEAD.

BACKPLANE HOLE PATTERN (COMPONENT SIDE-10 POS SHOWN)

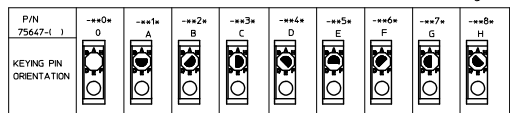


PART NUMBER TABLE				
ASSY PART NO.	K	L	P	TOTAL NO. OF DIFFERENTIAL PAIRS
75647-25**	4	7.40	15.53	10
75647-21**	9	16.65	24.78	20
75647-22**	24	44.40	52.53	50

- NOTES:
- MATERIAL: HOUSING - LIQUID CRYSTAL POLYMER (LCP) GLASS-FILLED, UL 94V-0. COLOR - GRAY. ELECTRICALLY ENHANCED GROUND INSERT; CONDUCTIVE RESIN, COLOR - RED. SIGNAL CONTACT AND GROUND BLADE - HIGH PERFORMANCE COPPER ALLOY.
 - FINISHES: SELECTIVE GOLD (Au) ON CONTACT AREA. SELECTIVE MATTE TIN (Sn) ON PCB TAILS, NICKEL INI OVERALL.
 - THESE PARTS CONFORM TO MOLEX PRODUCT SPECIFICATION PS-7521-999.
 - FOR MATED CONTACT MATING LENGTHS CONSULT MOLEX FOR AVAILABILITY. CONTACT PAIRS MUST BE THE SAME LENGTH.
 - FOR SPECIFIC PART NUMBER AND MATING INFORMATION PLEASE REFER TO CHART.
 - PACKAGE PER PK-70973-505S.
 - MARK PART NUMBER AND DATE CODE APPROXIMATELY WHERE SHOWN.
 - OPTIONAL HOLE LOCATION FOR GROUNDED GUIDE PIN OR ADDITIONAL GUIDE PIN SUPPORT. FOR GROUNDED GUIDE PIN HOLE TO BE PLATED, DRILL SIZE #25S. PAD SIZE #550.
 - THESE PARTS CONFORM TO MOLEX COSMETIC SPECIFICATION PS-45499-002 CLASS B.
 - MAPS (MOLEX ADVANCED PLATING SYSTEM).



PIN LENGTH	GOLD (Au) THICKNESS
mm	micrometers
0-3.95 mm	0.25 (MAPS)
1-4.95 mm	
2-5.95 mm	
3-3.95 mm	0.76
4-4.95 mm	
5-5.95 mm	
6-4.95 mm	1.27
9-5.95 mm	



LEAD-FREE PLATING

QUALITY SYMBOLS	GENERAL TOLERANCES (UNLESS SPECIFIED)		DIMENSION STYLE		SCALE	DESIGN UNITS	THIRD ANGLE PROJECTION
	mm	INCH	MM ONLY	INCH ONLY			
∇=0	4 PLACES ±---	±---	DRAWN BY	DATE	5:1	METRIC	
∇=0	3 PLACES ±---	±---	JB INGHAM	2006/10/11/19			
∇=0	2 PLACES ±0.25	±---	CHECKED BY	DATE			
	1 PLACE ±0.38	±---	KMULVEY	2006/10/11/19			
	0 PLACE ±---	±---	APPROVED BY	DATE			
			SMILLER	2012/12/05			
			ANGULAR ±1/2°				
			DRAFT WHERE APPLICABLE MUST REMAIN WITHIN DIMENSIONS				
			SEE CHART				
			THIS DRAWING CONTAINS INFORMATION THAT IS PROPRIETARY TO MOLEX INCORPORATED AND SHOULD NOT BE USED WITHOUT WRITTEN PERMISSION				