

## Excellent Integrated System Limited

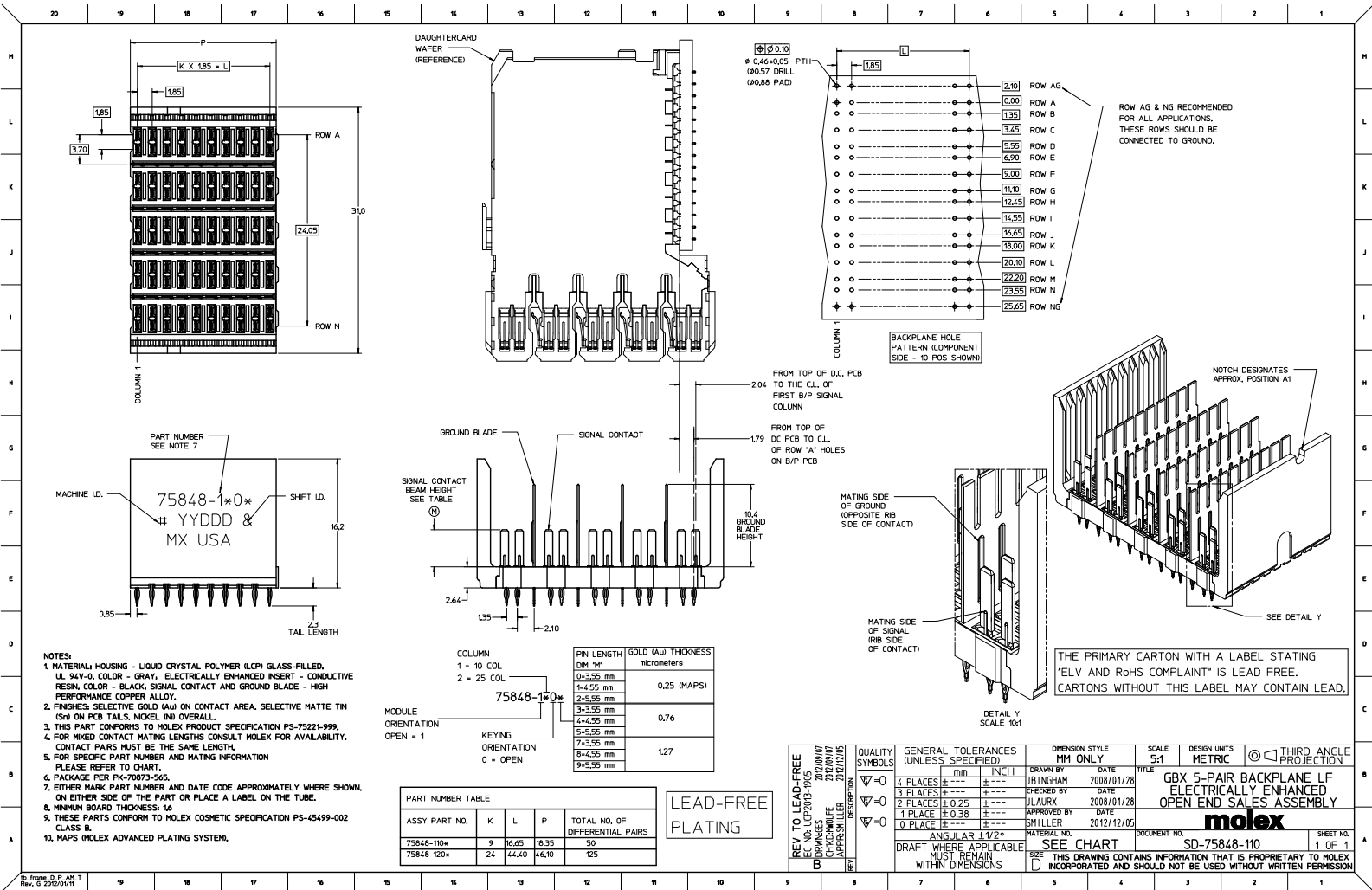
Stocking Distributor

Click to view price, real time Inventory, Delivery & Lifecycle Information:

[Molex Connector Corporation](#)  
[0758481205](#)

For any questions, you can email us directly:

[sales@integrated-circuit.com](mailto:sales@integrated-circuit.com)



- NOTES:**
- MATERIAL: HOUSING - LIQUID CRYSTAL POLYMER (LCP) GLASS-FILLED, UL 94V-0, COLOR - GRAY, ELECTRICALLY ENHANCED INSERT - CONDUCTIVE RESIN, COLOR - BLACK, SIGNAL CONTACT AND GROUND BLADE - HIGH PERFORMANCE COPPER ALLOY;
  - FINISHES: SELECTIVE GOLD (Au) ON CONTACT AREA, SELECTIVE MATTE TIN (Sn) ON PCB TAILS, NICKEL (Ni) OVERALL;
  - THIS PART CONFORMS TO MOLEX PRODUCT SPECIFICATION PS-75221-999;
  - FOR MIXED CONTACT MATING LENGTHS CONSULT MOLEX FOR AVAILABILITY, CONTACT PAIRS MUST BE THE SAME LENGTH;
  - FOR SPECIFIC PART NUMBER AND MATING INFORMATION PLEASE REFER TO CHART;
  - PACKAGE PER PK-70073-565;
  - EITHER MARK PART NUMBER AND DATE CODE APPROXIMATELY WHERE SHOWN, ON EITHER SIDE OF THE PART OR PLACE A LABEL ON THE TUBE;
  - MINIMUM BOARD THICKNESS: 1.6;
  - THESE PARTS CONFORM TO MOLEX COSMETIC SPECIFICATION PS-45499-002 CLASS B;
  - MAPS (MOLEX ADVANCED PLATING SYSTEM).

PIN LENGTH	GOLD (Au) THICKNESS
DIM "M"	micrometers
0-3.55 mm	0.25 (MAPS)
1-4.55 mm	
2-5.55 mm	0.76
3-3.55 mm	
4-4.55 mm	
5-5.55 mm	1.27
6-4.55 mm	
9-5.55 mm	

PART NUMBER TABLE			
ASSY PART NO.	K	L	P
75848-110*	9	16.65	18.35
75848-120*	24	44.40	46.10

**LEAD-FREE PLATING**

Rev. 0 of Part 1 Rev. 0 2009/01/11