

## Excellent Integrated System Limited

Stocking Distributor

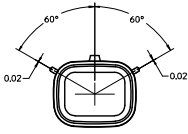
Click to view price, real time Inventory, Delivery & Lifecycle Information:

[Molex Connector Corporation](#)  
[0759001142](#)

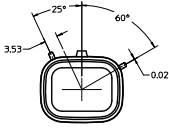
For any questions, you can email us directly:

[sales@integrated-circuit.com](mailto:sales@integrated-circuit.com)

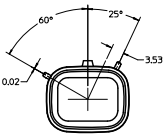
**CUSTOMER SHROUD DESIGN DETAILS**



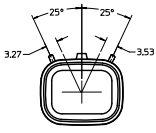
**KEYING OPTION "A"**  
SUGGESTED COLOR: BLACK



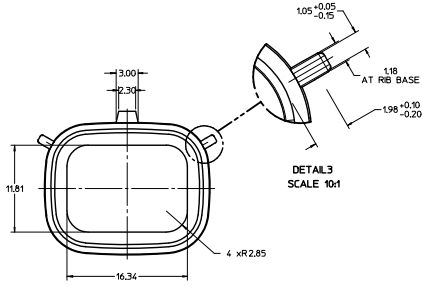
**KEYING OPTION "B"**  
SUGGESTED COLOR: GREY



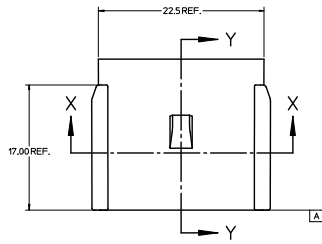
**KEYING OPTION "C"**  
SUGGESTED COLOR: BROWN



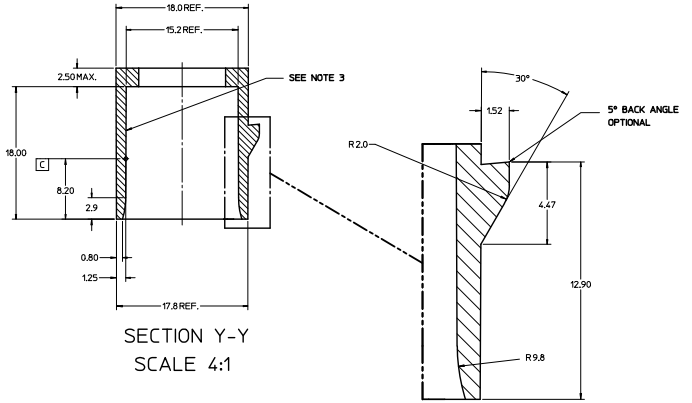
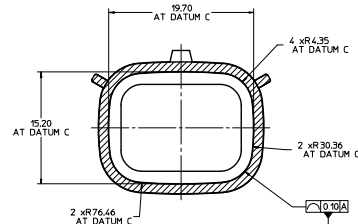
**KEYING OPTION "D"**  
SUGGESTED COLOR: GREEN



**DETAIL 3**  
SCALE 10:1



**SECTION X-X**  
SCALE 4:1



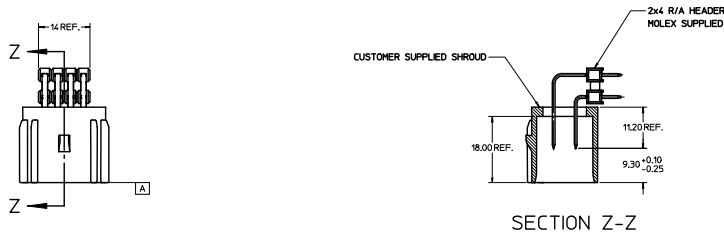
**SECTION Y-Y**  
SCALE 4:1

**DETAIL 2**  
SCALE 10:1

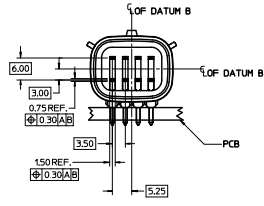
**NOTES:**

1. REFER TO MOLEX SALES DRAWING SD-75900-001 FOR THE R/A HEADER ASSEMBLY PRODUCT DETAILS AND RECOMMENDED PCB LAYOUT.
2. KEYING OPTIONS A-D AND SUGGESTED COLORS COMPLY TO THE POLARIZATION STANDARDS ESTABLISHED FOR MATING WITH A MX150 FEMALE CONNECTOR.
3. INTERIOR SHROUD SURFACE MUST BE FREE OF DEFECTS AND PARTING LINES ALL AROUND TO ENSURE PROPER SEALING OF THE MATING MX150 FEMALE CONNECTOR.
4. A FULL SHROUD ON THE MATING CONNECTOR IS REQUIRED TO INSURE THE HEADER SHROUD POLARIZATION FEATURES (OPTIONS A-D) WILL FUNCTION PROPERLY. THE FULL SHROUD ALSO PREVENTS SCOPING DAMAGE TO THE HEADER CONTACTS.
5. PERMISSIBLE DRAFT ANGLE 0.25/(0.04/0.015) MAXIMUM.
6. RADI ON ALL CORNERS SHOWN SHARP OR ALL UNSPECIFIED RADI 0.25 EXCEPT AS NOTED.
7. DIMENSIONS SHOWN ABOUT A CENTERLINE ARE SYMMETRICAL ABOUT THAT CENTERLINE WITHIN HALF THE SPECIFIED TOLERANCE.

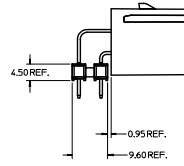
|   |  |   |  |                            |                              |  |                    |
|---|--|---|--|----------------------------|------------------------------|--|--------------------|
| <b>CHANGE CLASS</b><br>EC INCL 07/2012-03/2016<br>B<br>CHNG: DR/AN/ARG/SA<br>APPR: L/OMRELL<br>DATE: 2011/09/16 | QUALITY SYMBOLS<br>▽=0<br>▽=0                              | GENERAL TOLERANCES (UNLESS SPECIFIED):<br>4 PLACES ±---+---<br>3 PLACES ±---+---<br>2 PLACES ±0.10+---<br>1 PLACE ±0.2+---<br>ANGULAR ±1/2° | DIMENSION STYLE<br>MM ONLY   | SCALE<br>2:1               | DESIGN UNITS<br>METRIC       | THIRD ANGLE PROJECTION                                     |                    |
|   | DRAWN BY<br>DRUSLA<br>04/26/10                             | CHECKED BY<br>JCOMERC I<br>04/26/10   | APPROVED BY<br>JCOMERC I<br>04/26/10   | MATERIAL NO.<br>75900-2040 | DOCUMENT NO.<br>AS-75900-204 | APPLICATION SPEC<br>2X4 MX150 R/A HEADER<br>SHROUD DETAILS | MOLEX INCORPORATED |
|   | DRAFT WHERE APPLICABLE<br>MUST REMAIN<br>WITHIN DIMENSIONS | SIZE<br>D   | THIS DRAWING CONTAINS INFORMATION THAT IS PROPRIETARY TO MOLEX<br>INCORPORATED AND SHOULD NOT BE USED WITHOUT WRITTEN PERMISSION | SHEET NO.<br>1 OF 2        |                              |  |                    |
|   |  |   |  |                            |                              |  |                    |



SECTION Z-Z



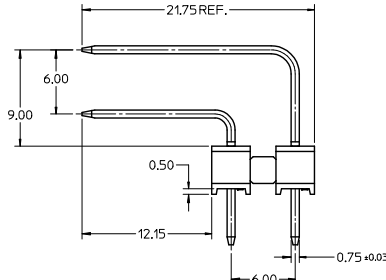
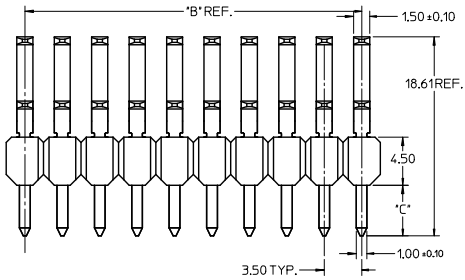
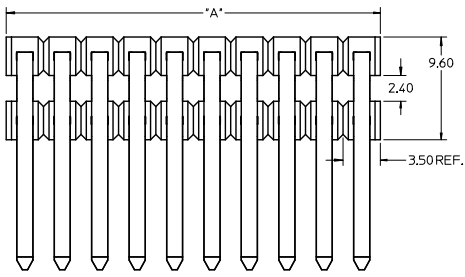
HEADER APPLICATION DETAILS



NOTES:

- ADHERENCE TO THE HEADER APPLICATION DETAILS IS IMPERATIVE TO ENSURE PROPOER SHROUD SEALING AND CONTACT ALIGNMENT WHEN MATED WITH A MX150 FEMALE CONNECTOR.

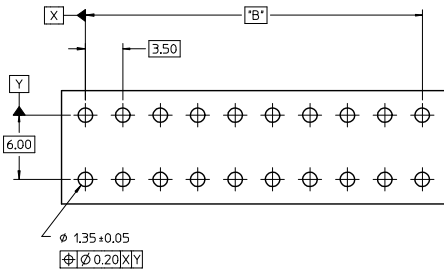
|   |   |   |   |              |              |                        |  |
|---|---|---|---|--------------|--------------|------------------------|--|
| ENTER DESCRIPTION<br>EC NO. UEP202-0866<br>DRAWN BY ROSA 2011/09/16<br>CHKC:<br>APPL. JOMERL 2011/09/16<br>REV: | QUALITY SYMBOLS   | GENERAL TOLERANCES (UNLESS SPECIFIED)   | DIMENSION STYLE   | SCALE        | DESIGN UNITS | THIRD ANGLE PROJECTION |  |
|   | 4 PLACES ±0<br>3 PLACES ±0<br>2 PLACES ±0.10<br>1 PLACE ±0.2<br>ANGULAR ±1/2° | mm INCH<br>+--- +---<br>+--- +---<br>+--- +---<br>+--- +---<br>±1/2°  | DRAWN BY DATE<br>DROSLA 04/26/07<br>CHECKED BY DATE<br>JCOMERC 04/26/07<br>APPROVED BY DATE<br>JCOMERC 04/26/07 | MM ONLY      | 2:1          | METRIC                 | <input checked="" type="checkbox"/> THIRD ANGLE PROJECTION |
|   | DRAFT WHERE APPLICABLE MUST REMAIN WITHIN DIMENSIONS                          | MATERIAL NO.  | 75900-2040  | DOCUMENT NO. | AS-75900-204 | SHEET NO.              | 2 OF 2   |
|   | SIZE D  | THIS DRAWING CONTAINS INFORMATION THAT IS PROPRIETARY TO MOLEX INCORPORATED AND SHOULD NOT BE USED WITHOUT WRITTEN PERMISSION |   |              |              |                        |  |



**NOTES:**

1. TERMINAL MAT'L: ALLOY C26000, CARTRIDGE BRASS
2. WAFER MAT'L: 30% GLASS FILLED LCP, 94V-0, COLOR BLACK.
3. TERMINAL PLATING:  
 OPTION 4 - 1.5µm MIN MATTE TIN OVERALL OVER 1.25µm NICKEL OVERALL  
 OPTION 1 - 2.5µm MIN MATTE TIN OVERALL OVER 1.25µm NICKEL OVERALL  
 OPTION 2 - 1.25µm NICKEL OVERALL 2.5µm MIN SELECT MATTE TIN PC TAIL AREA 0.05-0.25µm SELECT GOLD CONTACT AREA  
 OPTION 3 - 1.25µm NICKEL OVERALL 2.5µm MIN SELECT MATTE TIN PC TAIL AREA 0.75µm SELECT GOLD CONTACT AREA
4. HEADER ASSEMBLIES ARE TUBE PACKAGED PER PK-36518-351.

| PKT SIZE | PLATING OPTION | MATERIAL NUMBER | *A* DIM | *B* DIM  | *C* DIM | MATERIAL NUMBER | *A* DIM | *B* DIM  | *C* DIM |
|----------|----------------|-----------------|---------|----------|---------|-----------------|---------|----------|---------|
| 2 x 2    | 1              | 75900-1121      | 7.0     | 3.50 REF |         | 75900-1122      | 7.0     | 3.50 REF |         |
|          | 2              | 75900-1221      |         |          |         | 75900-1222      |         |          |         |
|          | 3              | 75900-1321      |         |          |         | 75900-1322      |         |          |         |
|          | 4              | 75900-1421      |         |          |         | 75900-1422      |         |          |         |
| 2 x 3    | 1              | 75900-1131      | 10.5    | 7.00     |         | 75900-1132      | 10.5    | 7.00     |         |
|          | 2              | 75900-1231      |         |          |         | 75900-1232      |         |          |         |
|          | 3              | 75900-1331      |         |          |         | 75900-1332      |         |          |         |
|          | 4              | 75900-1431      |         |          |         | 75900-1432      |         |          |         |
| 2 x 4    | 1              | 75900-1141      | 14.0    | 10.50    |         | 75900-1142      | 14.0    | 10.50    |         |
|          | 2              | 75900-1241      |         |          |         | 75900-1242      |         |          |         |
|          | 3              | 75900-1341      |         |          |         | 75900-1342      |         |          |         |
|          | 4              | 75900-1441      |         |          |         | 75900-1442      |         |          |         |
| 2 x 5    | 1              | 75900-1151      | 17.5    | 14.00    | 3.05    | 75900-1152      | 17.5    | 14.00    | 4.75    |
|          | 2              | 75900-1251      |         |          |         | 75900-1252      |         |          |         |
|          | 3              | 75900-1351      |         |          |         | 75900-1352      |         |          |         |
|          | 4              | 75900-1451      |         |          |         | 75900-1452      |         |          |         |
| 2 x 6    | 1              | 75900-1161      | 21.0    | 17.50    |         | 75900-1162      | 21.0    | 17.50    |         |
|          | 2              | 75900-1261      |         |          |         | 75900-1262      |         |          |         |
|          | 3              | 75900-1361      |         |          |         | 75900-1362      |         |          |         |
|          | 4              | 75900-1461      |         |          |         | 75900-1462      |         |          |         |
| 2 x 8    | 1              | 75900-1181      | 28.0    | 24.50    |         | 75900-1182      | 28.0    | 24.50    |         |
|          | 2              | 75900-1281      |         |          |         | 75900-1282      |         |          |         |
|          | 3              | 75900-1381      |         |          |         | 75900-1382      |         |          |         |
|          | 4              | 75900-1481      |         |          |         | 75900-1482      |         |          |         |
| 2 x 10   | 1              | 75900-1101      | 35.0    | 31.50    |         | 75900-1102      | 35.0    | 31.50    |         |
|          | 2              | 75900-1201      |         |          |         | 75900-1202      |         |          |         |
|          | 3              | 75900-1301      |         |          |         | 75900-1302      |         |          |         |
|          | 4              | 75900-1401      |         |          |         | 75900-1402      |         |          |         |



RECOMMENDED PCB LAYOUT

| PK SPEC UPDATED<br>EC NO: 2016-0115<br>DRAWN: BR02<br>CHKD:<br>APPR: KPRASAD | DESCRIPTION<br>2016/05/16<br>2016/06/03 | QUALITY SYMBOLS                        | GENERAL TOLERANCES (UNLESS SPECIFIED)   | DIMENSION STYLE | SCALE        | DESIGN UNITS  | THIRD ANGLE PROJECTION |      |      |          |      |      |          |       |      |         |       |      |         |      |      |         |     |
|--|---|--|---|-----------------|--------------|---|------------------------|------|------|----------|------|------|----------|-------|------|---------|-------|------|---------|------|------|---------|-----|
|  |   | $\nabla=0$<br>$\nabla=0$<br>$\nabla=0$ | <table border="1"> <thead> <tr> <th></th> <th>mm</th> <th>INCH</th> </tr> </thead> <tbody> <tr> <td>4 PLACES</td> <td>±---</td> <td>±---</td> </tr> <tr> <td>3 PLACES</td> <td>±---</td> <td>±---</td> </tr> <tr> <td>2 PLACES</td> <td>±0.13</td> <td>±---</td> </tr> <tr> <td>1 PLACE</td> <td>±0.25</td> <td>±---</td> </tr> <tr> <td>0 PLACE</td> <td>±---</td> <td>±---</td> </tr> </tbody> </table> |                 | mm           | INCH  | 4 PLACES               | ±--- | ±--- | 3 PLACES | ±--- | ±--- | 2 PLACES | ±0.13 | ±--- | 1 PLACE | ±0.25 | ±--- | 0 PLACE | ±--- | ±--- | MM ONLY | 4:1 |
|  | mm                                      | INCH                                   |   |                 |              |   |                        |      |      |          |      |      |          |       |      |         |       |      |         |      |      |         |     |
| 4 PLACES   | ±---                                    | ±---                                   |   |                 |              |   |                        |      |      |          |      |      |          |       |      |         |       |      |         |      |      |         |     |
| 3 PLACES   | ±---                                    | ±---                                   |   |                 |              |   |                        |      |      |          |      |      |          |       |      |         |       |      |         |      |      |         |     |
| 2 PLACES   | ±0.13                                   | ±---                                   |   |                 |              |   |                        |      |      |          |      |      |          |       |      |         |       |      |         |      |      |         |     |
| 1 PLACE  | ±0.25                                   | ±---                                   |   |                 |              |   |                        |      |      |          |      |      |          |       |      |         |       |      |         |      |      |         |     |
| 0 PLACE  | ±---                                    | ±---                                   |   |                 |              |   |                        |      |      |          |      |      |          |       |      |         |       |      |         |      |      |         |     |
| REV  |   | ANGULAR ±1/2°                          | DRAFT WHERE APPLICABLE MUST REMAIN WITHIN DIMENSIONS  | DATE            | TITLE        | <b>molex</b><br>MX150 RIGHT ANGLE DUAL ROW UNSHROUDED HEADER ASSEMBLY |                        |      |      |          |      |      |          |       |      |         |       |      |         |      |      |         |     |
| MATERIAL NO.   |   | SEE CHART                              | SIZE  | DATE            | DOCUMENT NO. | SD-75900-001<br>SHEET NO. 1 OF 1                                      |                        |      |      |          |      |      |          |       |      |         |       |      |         |      |      |         |     |