

## Excellent Integrated System Limited

Stocking Distributor

Click to view price, real time Inventory, Delivery & Lifecycle Information:

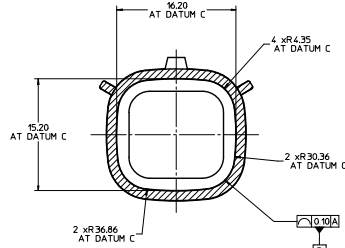
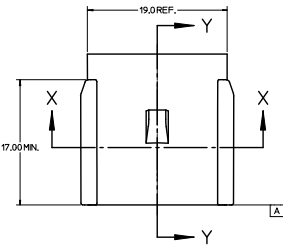
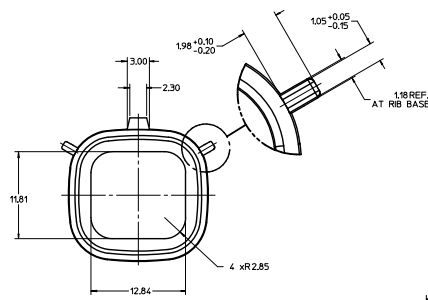
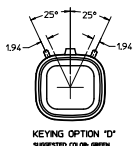
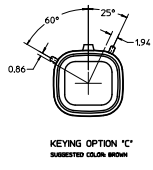
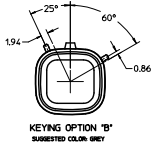
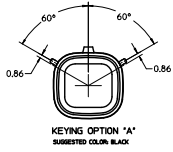
[Molex Connector Corporation](#)  
[0759001331](#)

For any questions, you can email us directly:

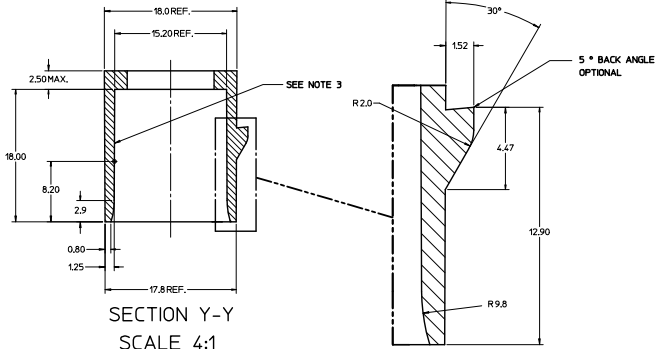
[sales@integrated-circuit.com](mailto:sales@integrated-circuit.com)

**CUSTOMER SHROUD DESIGN DETAILS**

- NOTES:
1. REFER TO MOLEX SALES DRAWING SD-75900-001 FOR THE R/A HEADER ASSEMBLY PRODUCT DETAILS AND RECOMMENDED PCB LAYOUT.
  2. KEYING OPTIONS A-D AND SUGGESTED COLORS COMPLY TO THE POLARIZATION STANDARDS ESTABLISHED FOR MATING WITH A MX150 FEMALE CONNECTOR.
  3. INTERIOR SHROUD SURFACE MUST BE FREE OF DEFECTS AND PARTING LINES ALL AROUND TO ENSURE PROPER SEALING OF THE MATING MX150 FEMALE CONNECTOR.
  4. A FULL SHROUD ON THE MATING CONNECTOR IS REQUIRED TO INSURE THE HEADER SHROUD POLARIZATION FEATURES (OPTIONS A-D) WILL FUNCTION PROPERLY. THE FULL SHROUD ALSO PREVENTS SCOPING DAMAGE TO THE HEADER CONTACTS.
  5. PERMISSIBLE DRAFT ANGLE 0.25/0.04/0.015 MAXIMUM.
  6. RADI ON ALL CORNERS SHOWN SHARP OR ALL UNSPECIFIED RADI 0.25 EXCEPT AS NOTED.
  7. DIMENSIONS SHOWN ABOUT A CENTERLINE ARE SYMMETRICAL ABOUT THAT CENTERLINE WITHIN HALF THE SPECIFIED TOLERANCE.

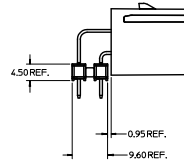
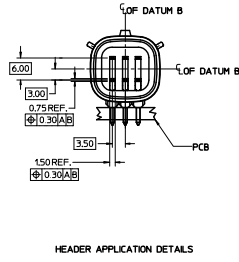
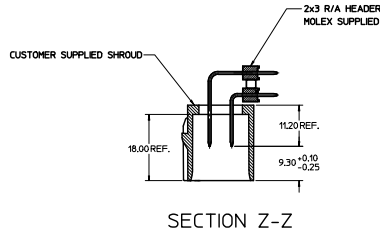
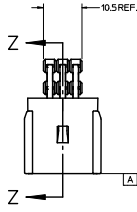


SECTION X-X  
SCALE 4:1



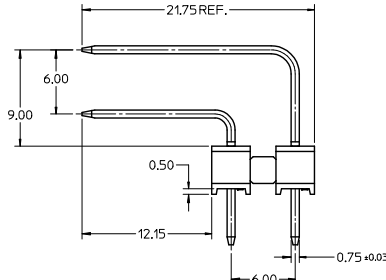
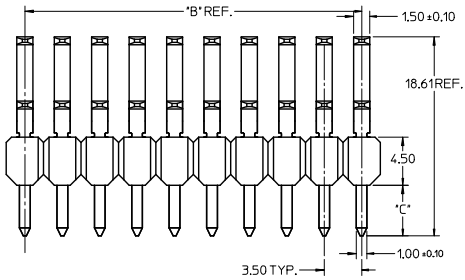
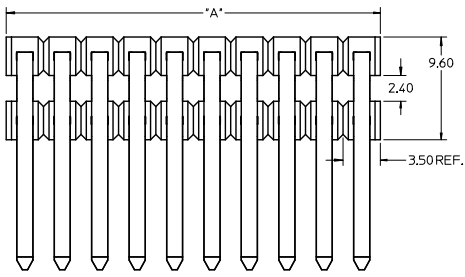
SECTION Y-Y  
SCALE 4:1

|  |  |                                       |   |   |   |  |
|--|--|---------------------------------------|---|---|---|--|
| <b>CHANGE CLASS</b><br>EC INCL 07/2012-08/2016<br>B<br>CHNO: 2011/09/16<br>APPR: LOMRELL<br>DESIGNED BY: | QUALITY SYMBOLS  | GENERAL TOLERANCES (UNLESS SPECIFIED) | DIMENSION STYLE                               | SCALE   | DESIGN UNITS  | THIRD ANGLE PROJECTION                                     |
|  | 4 PLACES ±0.10<br>3 PLACES ±0.15<br>2 PLACES ±0.20<br>1 PLACE ±0.30<br>ANGULAR ±1/2° | MM ONLY                               | 2:1   | METRIC  | DRAWN BY: DRUSLA<br>DATE: 04/26/07<br>CHECKED BY: JCOMERC I<br>DATE: 04/26/07<br>APPROVED BY: JCOMERC I<br>DATE: 04/26/07 | APPLICATION SPEC<br>2X3 MX150 R/A HEADER<br>SHROUD DETAILS |
|  | MATERIAL NO: 75900-2030<br>DRAFT WHERE APPLICABLE MUST REMAIN WITHIN DIMENSIONS      | MOLEX INCORPORATED                    | DOCUMENT NO: AS-75900-203<br>SHEET NO: 1 OF 2 | THIS DRAWING CONTAINS INFORMATION THAT IS PROPRIETARY TO MOLEX INCORPORATED AND SHOULD NOT BE USED WITHOUT WRITTEN PERMISSION |   |  |



NOTES:  
1. ADHERENCE TO THE HEADER APPLICATION DETAILS IS IMPERATIVE TO ENSURE PROPOER SHROUD SEALING AND CONTACT ALIGNMENT WHEN MATED WITH A MX150 FEMALE CONNECTOR.

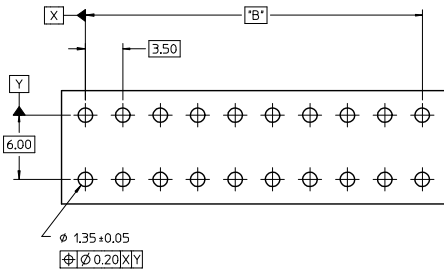
|   |  |   |                                      |                                  |                              |                     |
|---|--|---|--------------------------------------|----------------------------------|------------------------------|---------------------|
| <b>ENTER DESCRIPTION</b><br>EC NO. UEP202-0866<br>DRAWN BY ROSA 2011/09/16<br>CHECKED APPEL/08/16<br>APPROVED/08/16<br>REV. 1 | <b>QUALITY SYMBOLS</b><br>▽=0<br>▽=0                       | <b>GENERAL TOLERANCES (UNLESS SPECIFIED)</b><br>mm INCH<br>4 PLACES ±.004 ±.001<br>3 PLACES ±.005 ±.002<br>2 PLACES ±.010 ±.004<br>1 PLACE ±.020 ±.008<br>ANGULAR ±1/2° | <b>DIMENSION STYLE</b><br>MM ONLY    | SCALE 2:1<br>DESIGN UNITS METRIC | THIRD ANGLE PROJECTION       |                     |
|   | DRAWN BY DATE<br>DROSLA 04/26/07                           | CHECKED BY DATE<br>JCOMERC 04/26/07   | APPROVED BY DATE<br>JCOMERC 04/26/07 | MATERIAL NO.<br>75900-2030       | DOCUMENT NO.<br>AS-75900-203 | SHEET NO.<br>2 OF 2 |
|   | APPLICATION SPEC<br>2X3 MX150 R/A HEADER<br>SHROUD DETAILS |   |                                      |                                  |                              |                     |
|   | MOLEX INCORPORATED   |   |                                      |                                  |                              |                     |



**NOTES:**

1. TERMINAL MAT'L: ALLOY C26000, CARTRIDGE BRASS
2. WAFER MAT'L: 30% GLASS FILLED LCP, 94V-0, COLOR BLACK.
3. TERMINAL PLATING:  
 OPTION 4 - 1.5µm MIN MATTE TIN OVERALL OVER 1.25µm NICKEL OVERALL  
 OPTION 1 - 2.5µm MIN MATTE TIN OVERALL OVER 1.25µm NICKEL OVERALL  
 OPTION 2 - 1.25µm NICKEL OVERALL 2.5µm MIN SELECT MATTE TIN PC TAIL AREA 0.05-0.25µm SELECT GOLD CONTACT AREA  
 OPTION 3 - 1.25µm NICKEL OVERALL 2.5µm MIN SELECT MATTE TIN PC TAIL AREA 0.75µm SELECT GOLD CONTACT AREA
4. HEADER ASSEMBLIES ARE TUBE PACKAGED PER PK-36518-351.

| PKT SIZE | PLATING OPTION | MATERIAL NUMBER | *A* DIM | *B* DIM  | *C* DIM | MATERIAL NUMBER | *A* DIM | *B* DIM  | *C* DIM |
|----------|----------------|-----------------|---------|----------|---------|-----------------|---------|----------|---------|
| 2 x 2    | 1              | 75900-1121      | 7.0     | 3.50 REF |         | 75900-1122      | 7.0     | 3.50 REF |         |
|          | 2              | 75900-1221      |         |          |         | 75900-1222      |         |          |         |
|          | 3              | 75900-1321      |         |          |         | 75900-1322      |         |          |         |
|          | 4              | 75900-1421      |         |          |         | 75900-1422      |         |          |         |
| 2 x 3    | 1              | 75900-1131      | 10.5    | 7.00     |         | 75900-1132      | 10.5    | 7.00     |         |
|          | 2              | 75900-1231      |         |          |         | 75900-1232      |         |          |         |
|          | 3              | 75900-1331      |         |          |         | 75900-1332      |         |          |         |
|          | 4              | 75900-1431      |         |          |         | 75900-1432      |         |          |         |
| 2 x 4    | 1              | 75900-1141      | 14.0    | 10.50    |         | 75900-1142      | 14.0    | 10.50    |         |
|          | 2              | 75900-1241      |         |          |         | 75900-1242      |         |          |         |
|          | 3              | 75900-1341      |         |          |         | 75900-1342      |         |          |         |
|          | 4              | 75900-1441      |         |          |         | 75900-1442      |         |          |         |
| 2 x 5    | 1              | 75900-1151      | 17.5    | 14.00    | 3.05    | 75900-1152      | 17.5    | 14.00    | 4.75    |
|          | 2              | 75900-1251      |         |          |         | 75900-1252      |         |          |         |
|          | 3              | 75900-1351      |         |          |         | 75900-1352      |         |          |         |
|          | 4              | 75900-1451      |         |          |         | 75900-1452      |         |          |         |
| 2 x 6    | 1              | 75900-1161      | 21.0    | 17.50    |         | 75900-1162      | 21.0    | 17.50    |         |
|          | 2              | 75900-1261      |         |          |         | 75900-1262      |         |          |         |
|          | 3              | 75900-1361      |         |          |         | 75900-1362      |         |          |         |
|          | 4              | 75900-1461      |         |          |         | 75900-1462      |         |          |         |
| 2 x 8    | 1              | 75900-1181      | 28.0    | 24.50    |         | 75900-1182      | 28.0    | 24.50    |         |
|          | 2              | 75900-1281      |         |          |         | 75900-1282      |         |          |         |
|          | 3              | 75900-1381      |         |          |         | 75900-1382      |         |          |         |
|          | 4              | 75900-1481      |         |          |         | 75900-1482      |         |          |         |
| 2 x 10   | 1              | 75900-1101      | 35.0    | 31.50    |         | 75900-1102      | 35.0    | 31.50    |         |
|          | 2              | 75900-1201      |         |          |         | 75900-1202      |         |          |         |
|          | 3              | 75900-1301      |         |          |         | 75900-1302      |         |          |         |
|          | 4              | 75900-1401      |         |          |         | 75900-1402      |         |          |         |



RECOMMENDED PCB LAYOUT

| PK SPEC UPDATED<br>EC NO: 2016-0115<br>DRAWN: BR02<br>CHKD:<br>APPV: KPRASAD | DESCRIPTION<br>2016/05/16<br>2016/06/03 | QUALITY SYMBOLS                        | GENERAL TOLERANCES (UNLESS SPECIFIED)   | DIMENSION STYLE | SCALE        | DESIGN UNITS  | THIRD ANGLE PROJECTION |      |      |          |      |      |          |       |      |         |       |      |         |      |      |         |     |
|--|---|--|---|-----------------|--------------|---|------------------------|------|------|----------|------|------|----------|-------|------|---------|-------|------|---------|------|------|---------|-----|
|  |   | $\nabla=0$<br>$\nabla=0$<br>$\nabla=0$ | <table border="1"> <thead> <tr> <th></th> <th>mm</th> <th>INCH</th> </tr> </thead> <tbody> <tr> <td>4 PLACES</td> <td>±---</td> <td>±---</td> </tr> <tr> <td>3 PLACES</td> <td>±---</td> <td>±---</td> </tr> <tr> <td>2 PLACES</td> <td>±0.13</td> <td>±---</td> </tr> <tr> <td>1 PLACE</td> <td>±0.25</td> <td>±---</td> </tr> <tr> <td>0 PLACE</td> <td>±---</td> <td>±---</td> </tr> </tbody> </table> |                 | mm           | INCH  | 4 PLACES               | ±--- | ±--- | 3 PLACES | ±--- | ±--- | 2 PLACES | ±0.13 | ±--- | 1 PLACE | ±0.25 | ±--- | 0 PLACE | ±--- | ±--- | MM ONLY | 4:1 |
|  | mm                                      | INCH                                   |   |                 |              |   |                        |      |      |          |      |      |          |       |      |         |       |      |         |      |      |         |     |
| 4 PLACES   | ±---                                    | ±---                                   |   |                 |              |   |                        |      |      |          |      |      |          |       |      |         |       |      |         |      |      |         |     |
| 3 PLACES   | ±---                                    | ±---                                   |   |                 |              |   |                        |      |      |          |      |      |          |       |      |         |       |      |         |      |      |         |     |
| 2 PLACES   | ±0.13                                   | ±---                                   |   |                 |              |   |                        |      |      |          |      |      |          |       |      |         |       |      |         |      |      |         |     |
| 1 PLACE  | ±0.25                                   | ±---                                   |   |                 |              |   |                        |      |      |          |      |      |          |       |      |         |       |      |         |      |      |         |     |
| 0 PLACE  | ±---                                    | ±---                                   |   |                 |              |   |                        |      |      |          |      |      |          |       |      |         |       |      |         |      |      |         |     |
| REV  |   | ANGULAR ±1/2°                          | DRAFT WHERE APPLICABLE MUST REMAIN WITHIN DIMENSIONS  | DATE            | TITLE        | <b>molex</b><br>MX150 RIGHT ANGLE DUAL ROW UNSHROUDED HEADER ASSEMBLY |                        |      |      |          |      |      |          |       |      |         |       |      |         |      |      |         |     |
| MATERIAL NO.   |   | SEE CHART                              | SIZE  | DATE            | DOCUMENT NO. | SD-75900-001<br>SHEET NO. 1 OF 1                                      |                        |      |      |          |      |      |          |       |      |         |       |      |         |      |      |         |     |