

## Excellent Integrated System Limited

Stocking Distributor

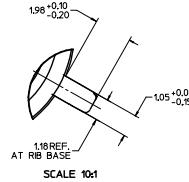
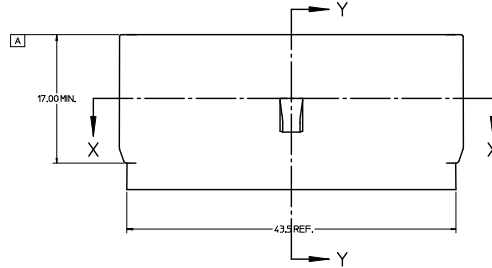
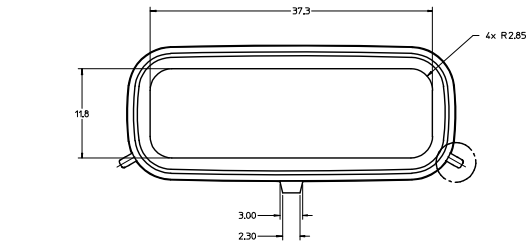
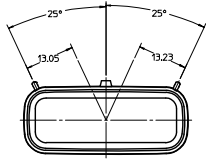
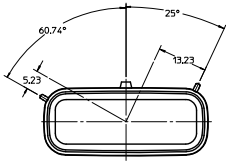
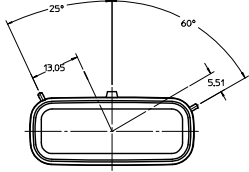
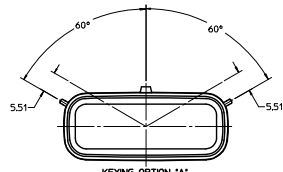
Click to view price, real time Inventory, Delivery & Lifecycle Information:

[Molex Connector Corporation](#)  
[0759001401](#)

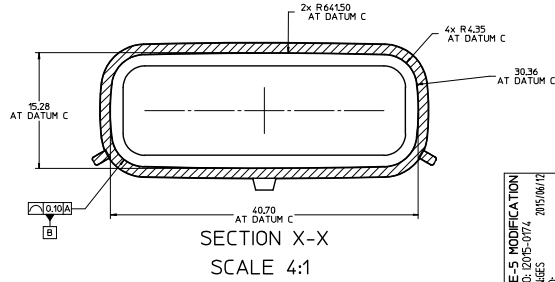
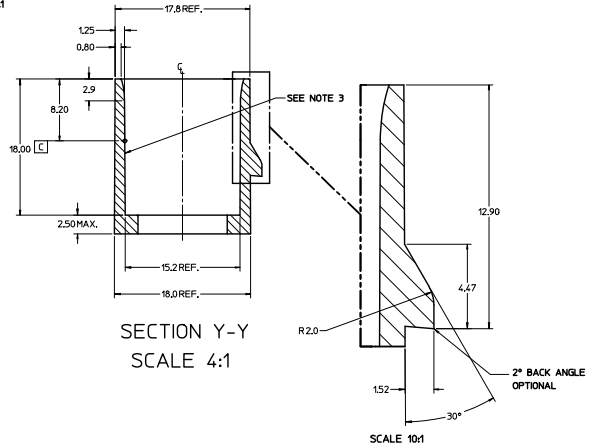
For any questions, you can email us directly:

[sales@integrated-circuit.com](mailto:sales@integrated-circuit.com)

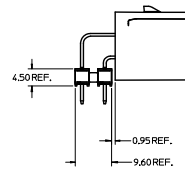
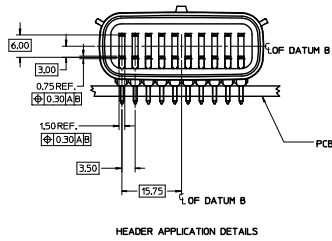
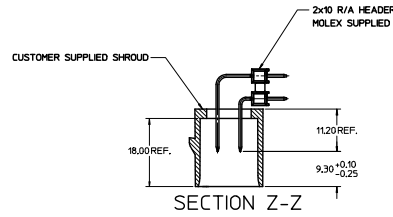
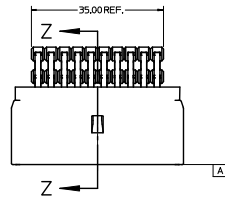
## CUSTOMER SHROUD DESIGN DETAILS



- NOTES:
1. REFER TO MOLEX SALES DRAWING SD-75900-001 FOR THE R/A HEADER ASSEMBLY PRODUCT DETAILS AND RECOMMENDED PCB LAYOUT.
  2. KEYING OPTIONS A-D AND SUGGESTED COLORS COMPLY TO THE POLARIZATION STANDARDS ESTABLISHED FOR MATING WITH A MX150 FEMALE CONNECTOR.
  3. INTERIOR SHROUD SURFACE MUST BE FREE OF DEFECTS AND PARTING LINES ALL AROUND TO ENSURE PROPER SEALING OF THE MATING MX150 FEMALE CONNECTOR.
  4. A FULL SHROUD ON THE MATING CONNECTOR IS REQUIRED TO INSURE THE HEADER SHROUD POLARIZATION FEATURES (OPTIONS A-D) WILL FUNCTION PROPERLY. THE FULL SHROUD ALSO PREVENTS SCOOP DAMAGE TO THE HEADER CONTACTS.
  5. PERMISSIBLE DRAFT ANGLE 0.25° MAXIMUM.
  6. RADI ON ALL CORNERS SHOWN SHARP OR ALL UNSPECIFIED RADI 0.25 EXCEPT AS NOTED.
  7. DIMENSIONS SHOWN ABOUT A CENTERLINE ARE SYMMETRICAL ABOUT THAT CENTERLINE WITHIN HALF THE SPECIFIED TOLERANCE.

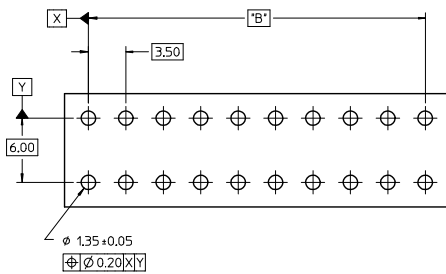
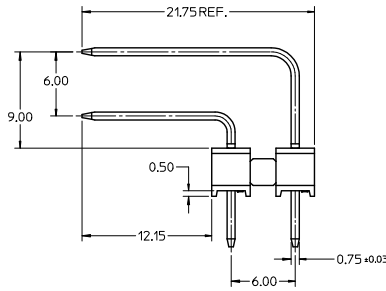
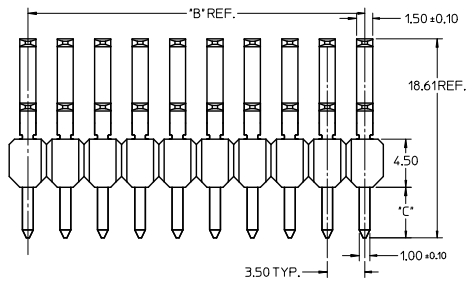
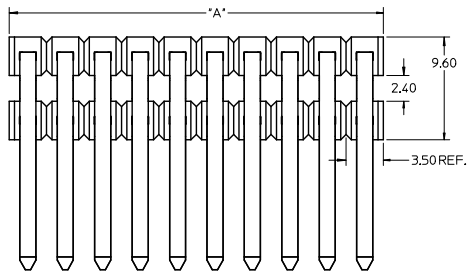


NOTES		QUALITY SYMBOLS		GENERAL TOLERANCES (UNLESS SPECIFIED)		DIMENSION STYLE		SCALE		DESIGN UNITS		THIRD ANGLE PROJECTION	
NOTE 5: MODIFICATION EQ. NO. 0205-074 CHGK: [ ] APPROVED: [ ] DATE: 2015/06/12	DESCRIPTION 2015/07/24	QUALITY SYMBOLS [ ] [ ] [ ] [ ] [ ]	GENERAL TOLERANCES (UNLESS SPECIFIED) 2 PLACES ± --- 3 PLACES ± --- 2 PLACES ± 0.10 1 PLACE ± 0.2 0 PLACE ± ---	mm INCH ± --- ± --- ± --- ± --- ± ---	DIMENSION STYLE MM ONLY DATE 04/26/07 DRAWN BY DROSCA CHECKED BY JCOMERC I APPROVED BY JCOMERC I DATE 04/26/07	SCALE 2:1 DATE 04/26/07	DESIGN UNITS METRIC	THIRD ANGLE PROJECTION	TITLE APPLICATION SPEC 2X10 MX150 R/A HEADER SHROUD DETAILS <b>molex</b>	DOCUMENT NO. 75900-2100 AS-75900-210	SHEET NO. 1 OF 2	THIS DRAWING CONTAINS INFORMATION THAT IS PROPRIETARY TO MOLEX INCORPORATED AND SHOULD NOT BE USED WITHOUT WRITTEN PERMISSION	MATERIAL NO. 75900-2100



NOTES:  
1. ADHERENCE TO THE HEADER APPLICATION DETAILS IS IMPERATIVE TO ENSURE PROPER SHROUD SEALING AND CONTACT ALIGNMENT WHEN MATED WITH A MX150 FEMALE CONNECTOR.

SEE SHEET 1 NO. 2105-0174 FOR DIMENSIONS CHNG	03/04/02	03/05/07	APPROVAL	DESCRIPTION	QUALITY SYMBOLS	GENERAL TOLERANCES (UNLESS SPECIFIED)	DIMENSION STYLE MM ONLY		SCALE 2:1	DESIGN UNITS METRIC	THIRD ANGLE PROJECTION	
						▽=0	mm INCH	DRAWN BY DATE	TITLE			
						4 PLACES ±0.10 ±0.004	07/01/07	APPLICATION SPEC				
						3 PLACES ±0.10 ±0.004	07/01/07	2X10 MX150 R/A HEADER				
						2 PLACES ±0.10 ±0.004	07/01/07	SHROUD DETAILS				
						1 PLACE ±0.2 ±0.008	07/01/07	molex				
						0 PLACES ± ±	07/01/07	DOCUMENT NO.				
						ANGULAR ±1/2°	75900-2100	AS-75900-210				
						DRAFT WHERE APPLICABLE MUST REMAIN WITHIN DIMENSIONS	SIZE	THIS DRAWING CONTAINS INFORMATION THAT IS PROPRIETARY TO MOLEX INCORPORATED AND SHOULD NOT BE USED WITHOUT WRITTEN PERMISSION				
						PREP	SHEET NO. 2 OF 2					



RECOMMENDED PCB LAYOUT

## NOTES:

1. TERMINAL MAT'L: ALLOY C26000, CARTRIDGE BRASS
2. WAFER MAT'L: 30% GLASS FILLED LCP, 94V-0, COLOR BLACK.
3. TERMINAL PLATING:  
OPTION 4 - 1.5µm MIN MATTE TIN OVERALL OVER 1.25µm NICKEL OVERALL  
OPTION 1 - 2.5µm MIN MATTE TIN OVERALL OVER 1.25µm NICKEL OVERALL  
OPTION 2 - 1.25µm NICKEL OVERALL 2.5µm MIN SELECT MATTE TIN PC TAIL  
AREA 0.05-0.25µm SELECT GOLD CONTACT AREA  
OPTION 3 - 1.25µm NICKEL OVERALL 2.5µm MIN SELECT MATTE TIN PC TAIL  
AREA 0.75µm SELECT GOLD CONTACT AREA
4. HEADER ASSEMBLIES ARE TUBE PACKAGED PER PK-36518-351.

2 x 2	1	75900-1121	7.0	3.50 REF	3.05	75900-1122	7.0	3.50 REF	4.75
	2	75900-1221				75900-1222			
	3	75900-1321				75900-1322			
	4	75900-1421				75900-1422			
2 x 3	1	75900-1131	10.5	7.00		75900-1132	10.5	7.00	
	2	75900-1231				75900-1232			
	3	75900-1331				75900-1332			
	4	75900-1431				75900-1432			
2 x 4	1	75900-1141	14.0	10.50		75900-1142	14.0	10.50	
	2	75900-1241				75900-1242			
	3	75900-1341			75900-1342				
	4	75900-1441			75900-1442				
2 x 5	1	75900-1151	17.5	14.00	75900-1152	17.5	14.00		
	2	75900-1251			75900-1252				
	3	75900-1351			75900-1352				
	4	75900-1451			75900-1452				
2 x 6	1	75900-1161	21.0	17.50	75900-1162	21.0	17.50		
	2	75900-1261			75900-1262				
	3	75900-1361			75900-1362				
	4	75900-1461			75900-1462				
2 x 8	1	75900-1181	28.0	24.50	75900-1182	28.0	24.50		
	2	75900-1281			75900-1282				
	3	75900-1381			75900-1382				
	4	75900-1481			75900-1482				
2 x 10	1	75900-1101	35.0	31.50	75900-1102	35.0	31.50		
	2	75900-1201			75900-1202				
	3	75900-1301			75900-1302				
	4	75900-1401			75900-1402				
CKT SIZE	PLATING OPTION	MATERIAL NUMBER	'A' DIM	'B' DIM	'C' DIM	MATERIAL NUMBER	'A' DIM	'B' DIM	'C' DIM

P/L SPEC UPDATED EC NO: 12076-0015 DRAWING NO: 20160402 CHKD: APPR:KPRASAD	2016/05/16 2016/06/03	DESCRIPTION REV	QUALITY SYMBOLS ▽=0 ▽=0 ▽=0	GENERAL TOLERANCES (UNLESS SPECIFIED)		DIMENSION STYLE MM ONLY		SCALE 4:1	DESIGN UNITS METRIC	THIRD ANGLE PROJECTION	
						DRAWN BY TMC/LELL	DATE 1/25/06	TITLE MX150 RIGHT ANGLE DUAL ROW UNSHROUDED HEADER ASSEMBLY			
				mm		INCH					
				4 PLACES ±---		CHECKED BY TMC/LELL		DATE 1/25/06			
				3 PLACES ±---		APPROVED BY BANAK I S		DATE 1/25/06			
				2 PLACES ±0.13							
				1 PLACE ±0.25							
				0 PLACE ±							
				ANGULAR ±1/2°		MATERIAL NO.		DOCUMENT NO.			
				DRAFT WHERE APPLICABLE MUST REMAIN WITHIN DIMENSIONS		SEE CHART SIZE A2		SD-75900-001		SHEET NO. 1 OF 1	
								THIS DRAWING CONTAINS INFORMATION THAT IS PROPRIETARY TO MOLEX INCORPORATED AND SHOULD NOT BE USED WITHOUT WRITTEN PERMISSION			