

Excellent Integrated System Limited

Stocking Distributor

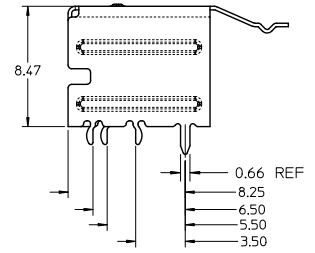
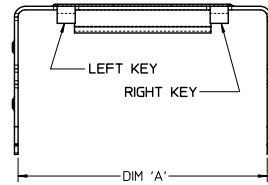
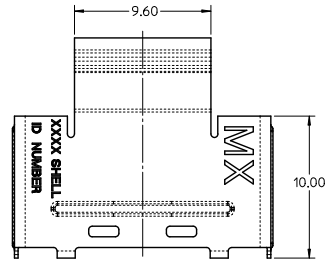
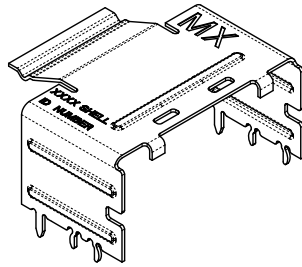
Click to view price, real time Inventory, Delivery & Lifecycle Information:

[Molex Connector Corporation](#)
[0760105141](#)

For any questions, you can email us directly:

sales@integrated-circuit.com

RETENTION FIT SHELL



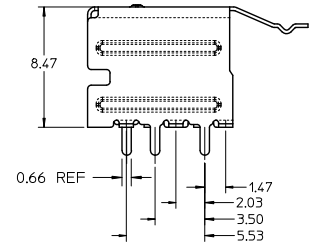
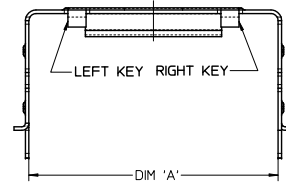
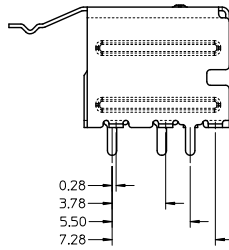
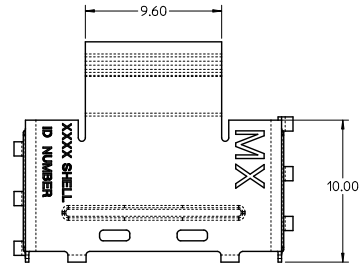
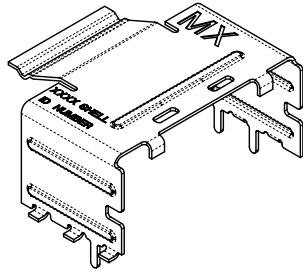
- NOTES:
1. MATERIAL: SILVER NICKEL, THICKNESS: 0.250/0.254
 2. TO BE USED WITH CONNECTOR SERIES 75586, CABLE SERIES 79575/74563/79576/74573/79536/74562/74569/74586
 3. PACKAGED PER PACKAGING SPECIFICATION PK-76010-001
 4. DATE CODE WILL APPEAR ON SHIPPING CARTON ONLY

| ITEM NUMBER | CIRCUIT SIZE | DIM 'A' | KEY |
|-------------|--------------|---------|-----------|
| 76010-5000 | 26 | 13.55 | LEFT |
| 76010-5010 | 26 | 13.55 | RIGHT |
| 76010-5020 | 26 | 13.55 | DUAL |
| 76010-5100 | 36 | 17.55 | LEFT |
| 76010-5110 | 36 | 17.55 | RIGHT |
| 76010-5120 | 36 | 17.55 | DUAL |
| 76010-5030 | 26 | 13.55 | UNIVERSAL |
| 76010-5130 | 36 | 17.55 | UNIVERSAL |
| 76010-5200 | 50 | 23.15 | LEFT |
| 76010-5210 | 50 | 23.15 | RIGHT |
| 76010-5220 | 50 | 23.15 | DUAL |
| 76010-5300 | 68 | 30.35 | LEFT |
| 76010-5310 | 68 | 30.35 | RIGHT |
| 76010-5320 | 68 | 30.35 | DUAL |
| 76010-5230 | 50 | 23.15 | UNIVERSAL |
| 76010-5330 | 68 | 30.35 | UNIVERSAL |

UNIVERSAL = NO KEY

| | | | | | | | | |
|--|-------------------------------|---|------------------------|---|--|--------------|------------------------|------------------------|
| ADD REF DIMENSION EC NO: UCP2072-1865 DRW: KLANG 2011/12/09 CHKD: APRI: MBANKIS 2011/12/09 APPR: MBANKIS | QUALITY SYMBOLS ▽=0 ▽=0 | GENERAL TOLERANCES (UNLESS SPECIFIED) | | DIMENSION STYLE MM ONLY | | SCALE 5:1 | DESIGN UNITS METRIC | THIRD ANGLE PROJECTION |
| | | 4 PLACES ± --- ± --- | DRAWN BY JLSWENSON | DATE 2006/02/16 | TITLE I-PASS SHELL RIGHT ANGLE INTERNAL CABLE | | | |
| | | 3 PLACES ± 0.13 ± --- | CHECKED BY KLANG | DATE 2006/02/16 | MOLEX INCORPORATED | | | |
| | | 2 PLACES ± 0.13 ± --- 1 PLACE ± 0.25 ± --- ANGULAR ± 1/2° | APPROVED BY MBANKIS | DATE 2006/02/16 | MATERIAL NO. SEE CHART DOCUMENT NO. SD-76010-001 | | | |
| DRAFT WHERE APPLICABLE MUST REMAIN WITHIN DIMENSIONS | | SIZE C | | THIS DRAWING CONTAINS INFORMATION THAT IS PROPRIETARY TO MOLEX INCORPORATED AND SHOULD NOT BE USED WITHOUT WRITTEN PERMISSION | | | | SHEET NO. 1 OF 7 |

SMT SHELL



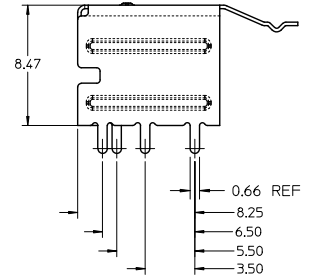
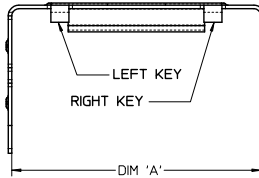
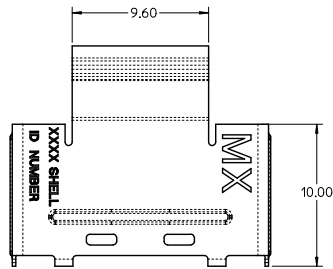
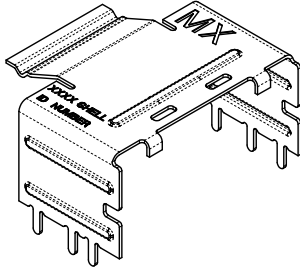
| ITEM NUMBER | CIRCUIT SIZE | DIM 'A' | KEY |
|-------------|--------------|---------|-----------|
| 76010-5001 | 26 | 13.55 | LEFT |
| 76010-5011 | 26 | 13.55 | RIGHT |
| 76010-5021 | 26 | 13.55 | DUAL |
| 76010-5101 | 36 | 17.55 | LEFT |
| 76010-5111 | 36 | 17.55 | RIGHT |
| 76010-5121 | 36 | 17.55 | DUAL |
| 76010-5031 | 26 | 13.55 | UNIVERSAL |
| 76010-5131 | 36 | 17.55 | UNIVERSAL |
| 76010-5201 | 50 | 23.15 | LEFT |
| 76010-5211 | 50 | 23.15 | RIGHT |
| 76010-5221 | 50 | 23.15 | DUAL |
| 76010-5301 | 68 | 30.35 | LEFT |
| 76010-5311 | 68 | 30.35 | RIGHT |
| 76010-5321 | 68 | 30.35 | DUAL |
| 76010-5231 | 50 | 23.15 | UNIVERSAL |
| 76010-5331 | 68 | 30.35 | UNIVERSAL |

UNIVERSAL = NO KEY

iPass™ IS A TRADEMARK OF MOLEX

| | | | | | | | | | |
|--|-------------------------------|---|-----------------------|----------------------------|----------------------|----------------|---|--|--|
| SEE SHEET 1 EC NO: UCP2012-1863 DRAWN BY: DRW:KLANG CHKD: APPR:MBANKI S 2011/12/09 2011/12/09 | QUALITY SYMBOLS ▽=0 ▽=0 | GENERAL TOLERANCES (UNLESS SPECIFIED) | | DIMENSION STYLE MM ONLY | | SCALE 5:1 | DESIGN UNITS METRIC | THIRD ANGLE PROJECTION | |
| | | 4 PLACES ± 0.13 ± --- | 3 PLACES ± 0.13 ± --- | 2 PLACES ± 0.13 ± --- | 1 PLACE ± 0.25 ± --- | ANGULAR ± 1/2° | DRAWN BY: JLSWENSON CHECKED BY: KLANG APPROVED BY: MBANKI S | DATE: 2006/02/16 DATE: 2006/02/16 DATE: 2006/02/16 | TITLE I-PASS SHELL RIGHT ANGLE INTERNAL CABLE |
| | | DRAFT WHERE APPLICABLE MUST REMAIN WITHIN DIMENSIONS | | SEE CHART | | MATERIAL NO. | MOLEX INCORPORATED | | SHEET NO. 2 OF 7 |
| | | THIS DRAWING CONTAINS INFORMATION THAT IS PROPRIETARY TO MOLEX INCORPORATED AND SHOULD NOT BE USED WITHOUT WRITTEN PERMISSION | | | | | | | |

THROUGH HOLE SHELL
(PART NUMBERS ON SHEET 4)



iPass™ IS A TRADEMARK OF MOLEX

| | | | | | | | | |
|---|-------------------------------|---|--------------------------|----------------------------|--|------------------------------|------------------------|------------------------|
| SEE SHEET 1 EC NO: UCP2072-1663 DRW/KL/KLANG 2011/12/09 CHKD: APPR: MBANKAKIS 2011/12/09 C1 | QUALITY SYMBOLS ▽=0 ▽=0 | GENERAL TOLERANCES (UNLESS SPECIFIED) | | DIMENSION STYLE MM ONLY | | SCALE 5:1 | DESIGN UNITS METRIC | THIRD ANGLE PROJECTION |
| | | 4 PLACES ± --- ± --- | DRAWN BY JLSWENSON | DATE 2006/02/16 | TITLE I-PASS SHELL RIGHT ANGLE INTERNAL CABLE | | | |
| | | 3 PLACES ± 0.13 ± --- | CHECKED BY KLANG | DATE 2006/02/16 | MOLEX INCORPORATED | | | |
| | | 2 PLACES ± 0.13 ± --- 1 PLACE ± 0.25 ± --- ANGULAR ± 1/2° | APPROVED BY MBANKAKIS | DATE 2006/02/16 | MATERIAL NO. SEE CHART | DOCUMENT NO. SD-76010-001 | SHEET NO. 3 OF 7 | |
| DRAFT WHERE APPLICABLE MUST REMAIN WITHIN DIMENSIONS | | THIS DRAWING CONTAINS INFORMATION THAT IS PROPRIETARY TO MOLEX INCORPORATED AND SHOULD NOT BE USED WITHOUT WRITTEN PERMISSION | | | | | | |

THROUGH HOLE SHELL (PART NUMBERS)

| ITEM NUMBER | CIRCUIT SIZE | DIM 'A' | DIM 'B' | KEY |
|-------------|--------------|---------|---------|-----------|
| 76010-5002 | 26 | 13.55 | 1.96 | LEFT |
| 76010-5012 | 26 | 13.55 | 1.96 | RIGHT |
| 76010-5022 | 26 | 13.55 | 1.96 | DUAL |
| 76010-5102 | 36 | 17.55 | 1.96 | LEFT |
| 76010-5112 | 36 | 17.55 | 1.96 | RIGHT |
| 76010-5122 | 36 | 17.55 | 1.96 | DUAL |
| 76010-5032 | 26 | 13.55 | 1.96 | UNIVERSAL |
| 76010-5132 | 36 | 17.55 | 1.96 | UNIVERSAL |
| 76010-5103 | 36 | 17.55 | 2.79 | LEFT |
| 76010-5113 | 36 | 17.55 | 2.79 | RIGHT |
| 76010-5123 | 36 | 17.55 | 2.79 | DUAL |
| 76010-5133 | 36 | 17.55 | 2.79 | UNIVERSAL |
| 76010-5104 | 36 | 17.55 | 3.18 | LEFT |
| 76010-5114 | 36 | 17.55 | 3.18 | RIGHT |
| 76010-5124 | 36 | 17.55 | 3.18 | DUAL |
| 76010-5134 | 36 | 17.55 | 3.18 | UNIVERSAL |
| 76010-5141 | 36 | 17.55 | 3.56 | LEFT |
| 76010-5151 | 36 | 17.55 | 3.56 | RIGHT |
| 76010-5161 | 36 | 17.55 | 3.56 | DUAL |
| 76010-5171 | 36 | 17.55 | 3.56 | UNIVERSAL |
| 76010-5202 | 50 | 23.15 | 1.96 | LEFT |
| 76010-5212 | 50 | 23.15 | 1.96 | RIGHT |
| 76010-5222 | 50 | 23.15 | 1.96 | DUAL |
| 76010-5302 | 68 | 30.35 | 1.96 | LEFT |
| 76010-5312 | 68 | 30.35 | 1.96 | RIGHT |
| 76010-5322 | 68 | 30.35 | 1.96 | DUAL |
| 76010-5232 | 50 | 23.15 | 1.96 | UNIVERSAL |
| 76010-5332 | 68 | 30.35 | 1.96 | UNIVERSAL |

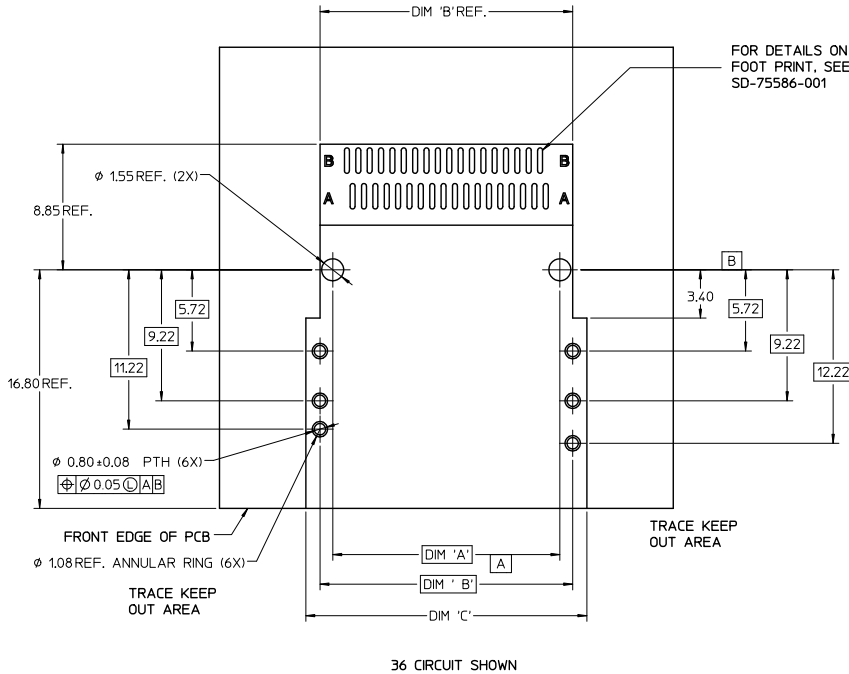
| ITEM NUMBER | CIRCUIT SIZE | DIM 'A' | DIM 'B' | KEY |
|-------------|--------------|---------|---------|-----------|
| 76010-5003 | 26 | 13.55 | 2.79 | LEFT |
| 76010-5013 | 26 | 13.55 | 2.79 | RIGHT |
| 76010-5023 | 26 | 13.55 | 2.79 | DUAL |
| 76010-5033 | 26 | 13.55 | 2.79 | UNIVERSAL |
| 76010-5004 | 26 | 13.55 | 3.18 | LEFT |
| 76010-5014 | 26 | 13.55 | 3.18 | RIGHT |
| 76010-5024 | 26 | 13.55 | 3.18 | DUAL |
| 76010-5034 | 26 | 13.55 | 3.18 | UNIVERSAL |
| 76010-5203 | 50 | 23.15 | 2.79 | LEFT |
| 76010-5213 | 50 | 23.15 | 2.79 | RIGHT |
| 76010-5223 | 50 | 23.15 | 2.79 | DUAL |
| 76010-5233 | 50 | 23.15 | 2.79 | UNIVERSAL |
| 76010-5204 | 50 | 23.15 | 3.18 | LEFT |
| 76010-5214 | 50 | 23.15 | 3.18 | RIGHT |
| 76010-5224 | 50 | 23.15 | 3.18 | DUAL |
| 76010-5234 | 50 | 23.15 | 3.18 | UNIVERSAL |
| 76010-5303 | 68 | 30.35 | 2.79 | LEFT |
| 76010-5313 | 68 | 30.35 | 2.79 | RIGHT |
| 76010-5323 | 68 | 30.35 | 2.79 | DUAL |
| 76010-5333 | 68 | 30.35 | 2.79 | UNIVERSAL |
| 76010-5304 | 68 | 30.35 | 3.18 | LEFT |
| 76010-5314 | 68 | 30.35 | 3.18 | RIGHT |
| 76010-5324 | 68 | 30.35 | 3.18 | DUAL |
| 76010-5334 | 68 | 30.35 | 3.18 | UNIVERSAL |

UNIVERSAL = NO KEY

iPass™ IS A TRADEMARK OF MOLEX

| | | | | | | |
|---|-----------------|--|---|--|------------------|--|
| SEE SHEET 1 EC NO: UCP2072-1663 DRAWN BY: DRINKLANG CHKD: APPR: MBANKA I S 2011/12/09 2011/12/09 DESCRIPTION REV | QUALITY SYMBOLS | GENERAL TOLERANCES (UNLESS SPECIFIED) | DIMENSION STYLE | SCALE | DESIGN UNITS | THIRD ANGLE PROJECTION |
| | ▽=0 ▽=0 | 4 PLACES ± --- ± --- 3 PLACES ± 0.13 ± --- 2 PLACES ± 0.13 ± --- 1 PLACE ± 0.25 ± --- ANGULAR ± 1/2° | MM ONLY | 5:1 | METRIC | I-PASS SHELL RIGHT ANGLE INTERNAL CABLE |
| | | | DRAWN BY: JLSWENSON CHECKED BY: KLANG APPROVED BY: MBANKA I S MATERIAL NO. | DATE: 2006/02/16 DATE: 2006/02/16 DATE: 2006/02/16 | | MOLEX INCORPORATED |
| | | DRAFT WHERE APPLICABLE MUST REMAIN WITHIN DIMENSIONS | SEE CHART SIZE C | DOCUMENT NO. SD-76010-001 | SHEET NO. 4 OF 7 | THIS DRAWING CONTAINS INFORMATION THAT IS PROPRIETARY TO MOLEX INCORPORATED AND SHOULD NOT BE USED WITHOUT WRITTEN PERMISSION |

RIGHT ANGLE RETENTION FIT AND THROUGH HOLE SHELL PCB FOOT PRINT

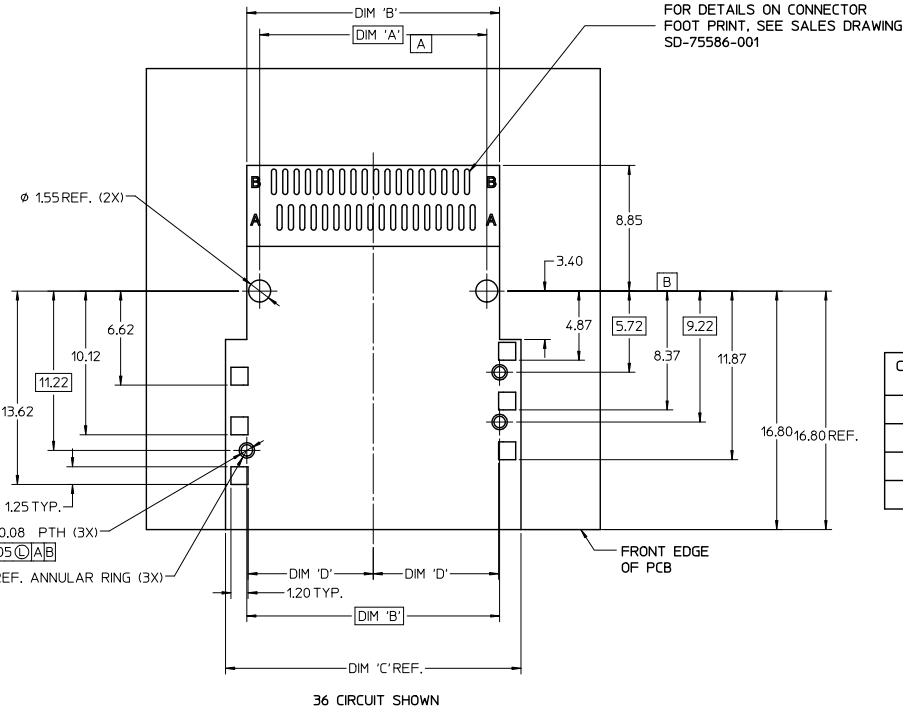


| CIRCUIT SIZE | CONNECTOR PEG TO PEG | SHELL PEG TO PEG | SHELL FOOT PRINT WIDTH |
|--------------|----------------------|------------------|------------------------|
| | DIM 'A' | DIM 'B' | DIM 'C' |
| 26 | 12.00 | 13.80 | 16.80 |
| 36 | 16.00 | 17.80 | 20.80 |
| 50 | 21.60 | 23.40 | 25.40 |
| 68 | 28.80 | 30.60 | 32.60 |

iPass™ IS A TRADEMARK OF MOLEX

| | | | | | | |
|---|--|---|---|--|------------------|---|
| SEE SHEET 1 EC NO: UCP2072-1663 DRAWN BY: DRWINKLANG CHKD: APPL:MBANKA1S C1 2011/12/09 2011/12/09 | QUALITY SYMBOLS | GENERAL TOLERANCES (UNLESS SPECIFIED) | DIMENSION STYLE | SCALE | DESIGN UNITS | THIRD ANGLE PROJECTION |
| | ▽=0 ▽=0 | mm INCH 4 PLACES ± --- ± --- 3 PLACES ± 0.13 ± --- 2 PLACES ± 0.13 ± --- 1 PLACE ± 0.25 ± --- ANGULAR ± 1/2° | MM ONLY DRAWN BY: JLSWENSON CHECKED BY: KLANG APPROVED BY: MBANKA1S MATERIAL NO. SEE CHART | DATE: 2006/02/16 DATE: 2006/02/16 DATE: 2006/02/16 | 5:1 METRIC | I-PASS SHELL RIGHT ANGLE INTERNAL CABLE MOLEX INCORPORATED SD-76010-001 |
| | DRAFT WHERE APPLICABLE MUST REMAIN WITHIN DIMENSIONS | SIZE C | THIS DRAWING CONTAINS INFORMATION THAT IS PROPRIETARY TO MOLEX INCORPORATED AND SHOULD NOT BE USED WITHOUT WRITTEN PERMISSION | | SHEET NO. 5 OF 7 | |
| | | | | | | |

RIGHT ANGLE SMT SHELL PCB FOOT PRINT

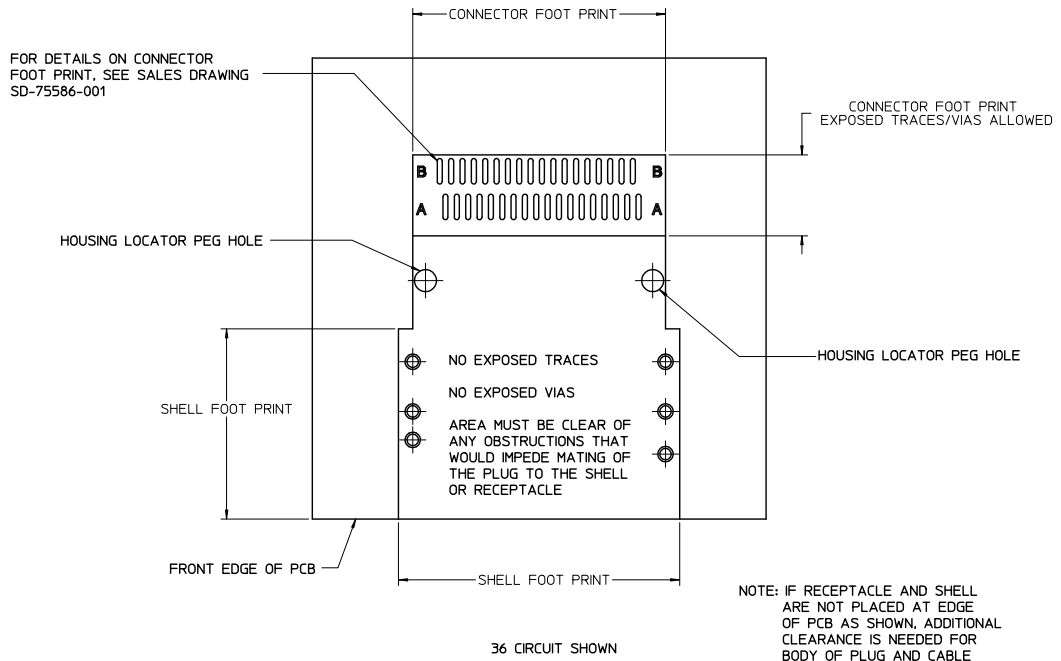


| | CONNECTOR PEG TO PEG | SHELL PEG TO PEG | SHELL FOOT PRINT WIDTH | CENTERLINE TO PAD EDGE |
|--------------|----------------------|------------------|------------------------|------------------------|
| CIRCUIT SIZE | DIM 'A' | DIM 'B' | DIM 'C' | DIM 'D' |
| 26 | 12.00 | 13.80 | 16.80 | 6.825 |
| 36 | 16.00 | 17.80 | 20.80 | 8.825 |
| 50 | 21.60 | 23.40 | 26.40 | 11.625 |
| 68 | 28.80 | 30.60 | 33.60 | 15.225 |

iPass™ IS A TRADEMARK OF MOLEX

| | | | | | | | | | |
|--|-------------------------------|---------------------------------------|----------------|---|-------------|---------------------|---|------------------------|--|
| SEE SHEET 1 EC NO: UCP2072-1663 DRAWN BY: DRWINKLANG CHKD: APPLR:MBANKA1S DATE: 2011/12/09 | QUALITY SYMBOLS ▽=0 ▽=0 | GENERAL TOLERANCES (UNLESS SPECIFIED) | | DIMENSION STYLE MM ONLY | | SCALE 5:1 | DESIGN UNITS METRIC | THIRD ANGLE PROJECTION | |
| | | 4 PLACES ± --- ± --- | mm | INCH | DRAWN BY | DATE | I-PASS SHELL RIGHT ANGLE INTERNAL CABLE | | |
| | | 3 PLACES ± 0.13 ± --- | | | JLSWENSON | 2006/02/16 | | | |
| | | 2 PLACES ± 0.13 ± --- | | | CHECKED BY | DATE | MOLEX INCORPORATED | | |
| 1 PLACE ± 0.25 ± --- | | | KLANG | 2006/02/16 | | | | | |
| | | | ANGULAR ± 1/2° | | APPROVED BY | DATE | MOLEX INCORPORATED | | |
| | | | | | MBANKA1S | 2006/02/16 | MOLEX INCORPORATED | | |
| DRAFT WHERE APPLICABLE MUST REMAIN WITHIN DIMENSIONS | | MATERIAL NO. SEE CHART | | DOCUMENT NO. SD-76010-001 | | SHEET NO. 6 OF 7 | | | |
| | | SIZE C | | THIS DRAWING CONTAINS INFORMATION THAT IS PROPRIETARY TO MOLEX INCORPORATED AND SHOULD NOT BE USED WITHOUT WRITTEN PERMISSION | | | | | |

RIGHT ANGLE SHELL PCB FOOT PRINT DESCRIPTIONS



NOTE: IF RECEPTACLE AND SHELL ARE NOT PLACED AT EDGE OF PCB AS SHOWN, ADDITIONAL CLEARANCE IS NEEDED FOR BODY OF PLUG AND CABLE

iPass™ IS A TRADEMARK OF MOLEX

| | | | | | | |
|--|-----------------|---|--|-------|---|---|
| SEE SHEET 1 EC NO: UCP2072-1863 DRW: KLANG 2011/12/09 CHKD: APPL: MBANKA S 2011/12/09 C1 REV | QUALITY SYMBOLS | GENERAL TOLERANCES (UNLESS SPECIFIED) | DIMENSION STYLE | SCALE | DESIGN UNITS | THIRD ANGLE PROJECTION |
| | ▽=0 ▽=0 | mm INCH 4 PLACES ± --- ± --- 3 PLACES ± 0.13 ± --- 2 PLACES ± 0.13 ± --- 1 PLACE ± 0.25 ± --- ANGULAR ± 1/2° | MM ONLY | 5:1 | METRIC | I-PASS SHELL RIGHT ANGLE INTERNAL CABLE |
| | | DRAFT WHERE APPLICABLE MUST REMAIN WITHIN DIMENSIONS | DRAWN BY: JLSWENSON DATE: 2006/02/16 CHECKED BY: KLANG DATE: 2006/02/16 APPROVED BY: MBANKA S DATE: 2006/02/16 | | | MOLEX INCORPORATED MOLEX |
| | | | MATERIAL NO. SEE CHART SIZE C | | DOCUMENT NO. SD-76010-001 SHEET NO. 7 OF 7 | |