

Excellent Integrated System Limited

Stocking Distributor

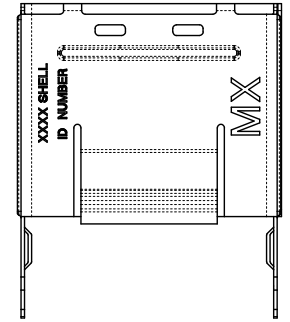
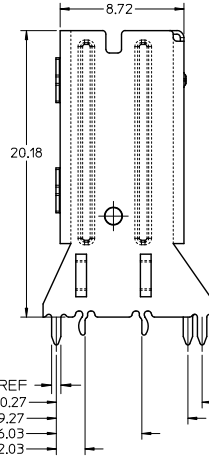
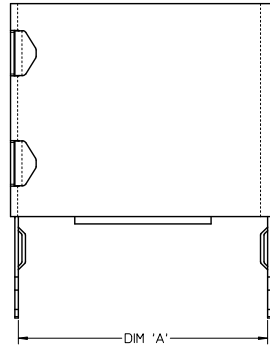
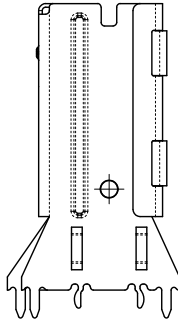
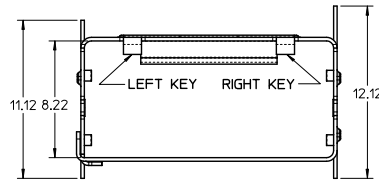
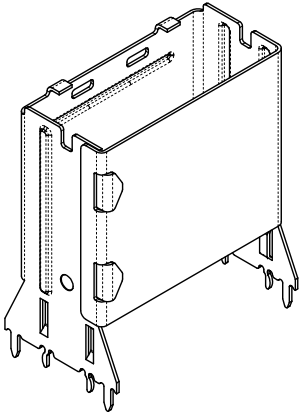
Click to view price, real time Inventory, Delivery & Lifecycle Information:

[Molex Connector Corporation](#)
[0760107132](#)

For any questions, you can email us directly:

sales@integrated-circuit.com

RETENTION FIT SHELL



ITEM NUMBER	CIRCUIT SIZE	DIM 'A'	KEY
76010-5005	26	13.55	LEFT
76010-5015	26	13.55	RIGHT
76010-5025	26	13.55	DUAL
76010-5105	36	17.55	LEFT
76010-5115	36	17.55	RIGHT
76010-5125	36	17.55	DUAL
76010-5205	50	23.15	LEFT
76010-5215	50	23.15	RIGHT
76010-5225	50	23.15	DUAL
76010-5305	68	30.35	LEFT
76010-5315	68	30.35	RIGHT
76010-5325	68	30.35	DUAL
76010-5035	26	13.55	UNIVERSAL
76010-5135	36	17.55	UNIVERSAL
76010-5235	50	23.15	UNIVERSAL
76010-5335	68	30.35	UNIVERSAL

UNIVERSAL = NO KEY

NOTES:

1. MATERIAL: SILVER NICKEL, THICKNESS: 0.250/0.254

2. TO BE USED WITH CONNECTOR SERIES: 75577

MATES WITH CABLE SERIES:

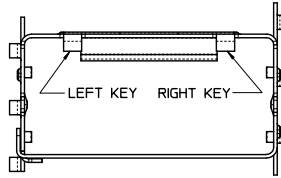
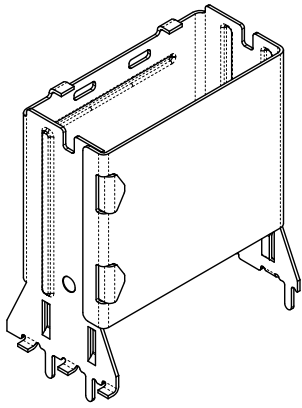
79575/74563/79576/74573/79536/74562/74569/74586

3. PACKAGED PER PACKAGING SPECIFICATION PK-76010-002

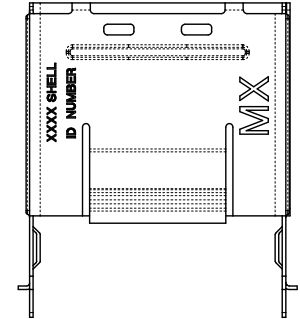
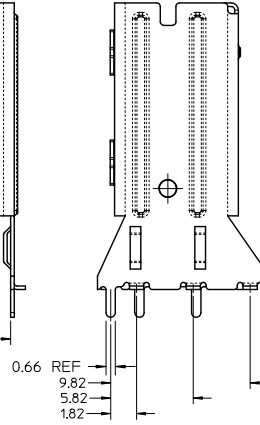
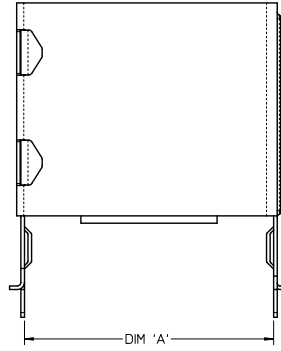
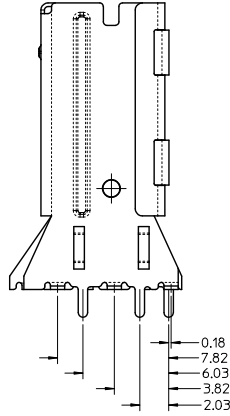
4. DATE CODE WILL APPEAR ON SHIPPING CARTON ONLY

iPass™ IS A TRADEMARK OF MOLEX

ADD REF DIMENSION EC NO: UCP2012-1863 DRAWN BY: KLK CHKD: MBANAK I S C1	2011/12/09 2011/12/09 MBANAK I S	DESCRIPTION ▽=0 ▽=0	QUALITY SYMBOLS	GENERAL TOLERANCES (UNLESS SPECIFIED)		DIMENSION STYLE MM ONLY		SCALE 5:1	DESIGN UNITS METRIC	THIRD ANGLE PROJECTION	TITLE SALES DRAWING IPASS VERTICAL SHELL INTERNAL CABLE MOLEX INCORPORATED	DOCUMENT NO. SD-76010-002	SHEET NO. 1 OF 7
				mm	INCH	DRAWN BY KLK	DATE 22/02/05						
				4 PLACES ± 0.13	± 0.005	CHECKED BY JSWENSON	DATE 22/02/05						
				3 PLACES ± 0.13	± 0.005	APPROVED BY MBANAK I S	DATE 22/02/05						
				2 PLACES ± 0.13	± 0.010								
				1 PLACE ± 0.25	± 0.010								
				ANGULAR ± 1/2°									
				DRAFT WHERE APPLICABLE MUST REMAIN WITHIN DIMENSIONS		SEE CHART							
						SIZE		THIS DRAWING CONTAINS INFORMATION THAT IS PROPRIETARY TO MOLEX INCORPORATED AND SHOULD NOT BE USED WITHOUT WRITTEN PERMISSION					





SMT SHELL

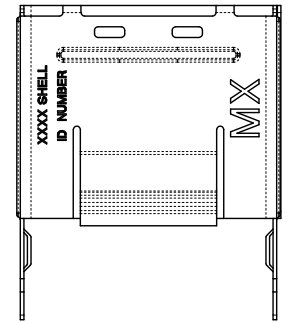
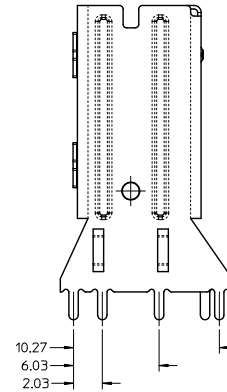
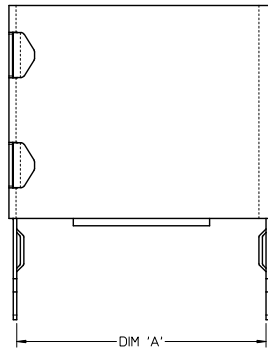
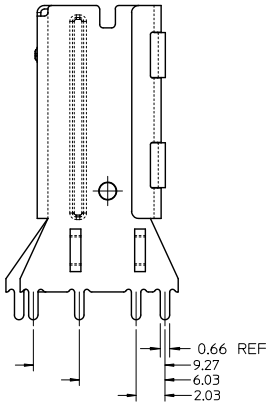
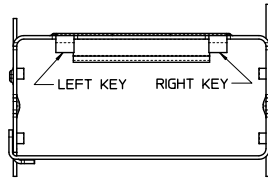
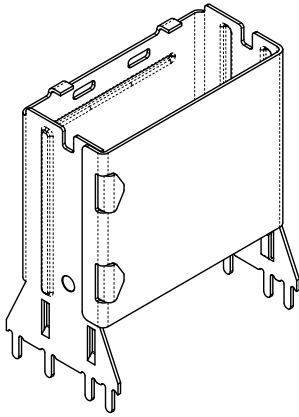


ITEM NUMBER	CIRCUIT SIZE	DIM 'A'	KEY
76010-5006	26	13.55	LEFT
76010-5016	26	13.55	RIGHT
76010-5026	26	13.55	DUAL
76010-5106	36	17.55	LEFT
76010-5116	36	17.55	RIGHT
76010-5126	36	17.55	DUAL
76010-5206	50	23.15	LEFT
76010-5216	50	23.15	RIGHT
76010-5226	50	23.15	DUAL
76010-5306	68	30.35	LEFT
76010-5316	68	30.35	RIGHT
76010-5326	68	30.35	DUAL
76010-5036	26	13.55	UNIVERSAL
76010-5136	36	17.55	UNIVERSAL
76010-5236	50	23.15	UNIVERSAL
76010-5336	68	30.35	UNIVERSAL


UNIVERSAL = NO KEY

SEE SHEET 1 EC NO: UCP2072-1863 DRAWN: KLK CHKD: MBANAK I S APPR: MBANAK I S C1	2011/12/09 2011/12/09 DESCRIPTION REV	QUALITY SYMBOLS ▽=0 ▽=0	GENERAL TOLERANCES (UNLESS SPECIFIED)				DIMENSION STYLE MM ONLY		SCALE 5:1	DESIGN UNITS METRIC	 THIRD ANGLE PROJECTION		
			mm		INCH		DRAWN BY	DATE	TITLE SALES DRAWING IPASS VERTICAL SHELL INTERNAL CABLE MOLEX INCORPORATED SD-76010-002				
			4 PLACES ±---		±---		KLK	22/02/05					
			3 PLACES ±0.13		±---		CHECKED BY	DATE					
			2 PLACES ±0.13		±---		JSWENSON	22/02/05					
			1 PLACE ±0.25		±---		APPROVED BY	DATE					
			ANGULAR ±1/2°				MBANAK I S	22/02/05		MOLEX INCORPORATED			
			DRAFT WHERE APPLICABLE MUST REMAIN WITHIN DIMENSIONS				MATERIAL NO.		DOCUMENT NO.		SHEET NO.		
							SEE CHART		SD-76010-002		2 OF 7		
							SIZE C		THIS DRAWING CONTAINS INFORMATION THAT IS PROPRIETARY TO MOLEX INCORPORATED AND SHOULD NOT BE USED WITHOUT WRITTEN PERMISSION				

THROUGH HOLE SHELL (PART NUMBERS ON SHEET 4)



iPass™ IS A TRADEMARK OF MOLEX

SEE SHEET 1 EC NO: UCP2072-1863 DRAWN BY: KLK CHKD: MBANAK I S APPR: MBANAK I S 2011/12/09	DESCRIPTION	QUALITY SYMBOLS ▽=0 ▽=0	GENERAL TOLERANCES (UNLESS SPECIFIED)				DIMENSION STYLE		SCALE	DESIGN UNITS	THIRD ANGLE PROJECTION		
							MM ONLY		5:1	METRIC			
			mm		INCH		DRAWN BY	DATE	TITLE				
			4 PLACES ± 0.13		± 0.005		KLANG	22/02/05	SALES DRAWING IPASS VERTICAL SHELL INTERNAL CABLE				
			3 PLACES ± 0.13		± 0.005		CHECKED BY	DATE					
			2 PLACES ± 0.13		± 0.005		JSWENSON	22/02/05	MOLEX INCORPORATED				
			1 PLACE ± 0.25		± 0.010		APPROVED BY	DATE					
			ANGULAR ± 1/2°				MBANAK I S	22/02/05	MOLEX INCORPORATED				
							MATERIAL NO.	DOCUMENT NO.					
							SEE CHART		SHEET NO. 3 OF 7				
						THIS DRAWING CONTAINS INFORMATION THAT IS PROPRIETARY TO MOLEX INCORPORATED AND SHOULD NOT BE USED WITHOUT WRITTEN PERMISSION							

THROUGH HOLE SHELL (PART NUMBERS)

ITEM NUMBER	CIRCUIT SIZE	DIM 'A'	DIM 'B'	KEY
76010-5007	26	13.55	1.96	LEFT
76010-5017	26	13.55	1.96	RIGHT
76010-5027	26	13.55	1.96	DUAL
76010-5107	36	17.55	1.96	LEFT
76010-5117	36	17.55	1.96	RIGHT
76010-5127	36	17.55	1.96	DUAL
76010-5207	50	23.15	1.96	LEFT
76010-5217	50	23.15	1.96	RIGHT
76010-5227	50	23.15	1.96	DUAL
76010-5307	68	30.35	1.96	LEFT
76010-5317	68	30.35	1.96	RIGHT
76010-5327	68	30.35	1.96	DUAL
76010-5037	26	13.55	1.96	UNIVERSAL
76010-5137	36	17.55	1.96	UNIVERSAL
76010-5237	50	23.15	1.96	UNIVERSAL
76010-5337	68	30.35	1.96	UNIVERSAL
76010-7101	36	17.55	2.79	LEFT
76010-7111	36	17.55	2.79	RIGHT
76010-7121	36	17.55	2.79	DUAL
76010-7131	36	17.55	2.79	UNIVERSAL
76010-7102	36	17.55	3.18	LEFT
76010-7112	36	17.55	3.18	RIGHT
76010-7122	36	17.55	3.18	DUAL
76010-7132	36	17.55	3.18	UNIVERSAL
76010-7103	36	17.55	3.56	LEFT
76010-7113	36	17.55	3.56	RIGHT
76010-7123	36	17.55	3.56	DUAL
76010-7133	36	17.55	3.56	UNIVERSAL

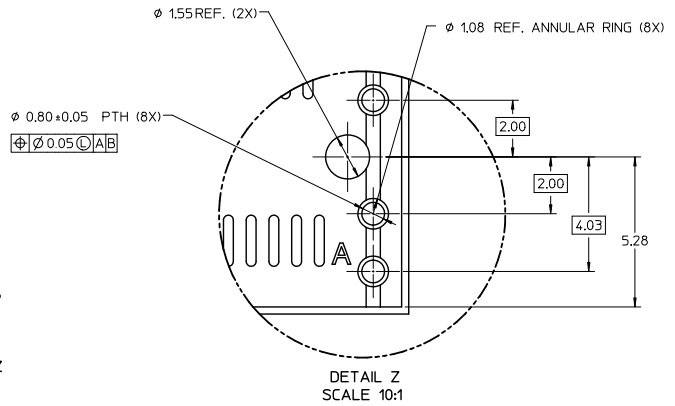
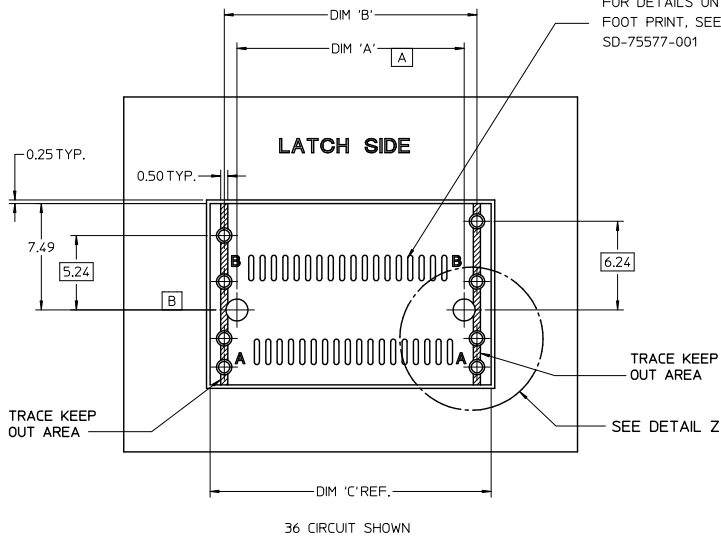
ITEM NUMBER	CIRCUIT SIZE	DIM 'A'	DIM 'B'	KEY
76010-7401	26	13.55	2.79	LEFT
76010-7411	26	13.55	2.79	RIGHT
76010-7421	26	13.55	2.79	DUAL
76010-7431	26	13.55	2.79	UNIVERSAL
76010-7402	26	13.55	3.18	LEFT
76010-7412	26	13.55	3.18	RIGHT
76010-7422	26	13.55	3.18	DUAL
76010-7432	26	13.55	3.18	UNIVERSAL
76010-7201	50	23.15	2.79	LEFT
76010-7211	50	23.15	2.79	RIGHT
76010-7221	50	23.15	2.79	DUAL
76010-7231	50	23.15	2.79	UNIVERSAL
76010-7202	50	23.15	3.18	LEFT
76010-7212	50	23.15	3.18	RIGHT
76010-7222	50	23.15	3.18	DUAL
76010-7232	50	23.15	3.18	UNIVERSAL
76010-7301	68	30.35	2.79	LEFT
76010-7311	68	30.35	2.79	RIGHT
76010-7321	68	30.35	2.79	DUAL
76010-7331	68	30.35	2.79	UNIVERSAL
76010-7302	68	30.35	3.18	LEFT
76010-7312	68	30.35	3.18	RIGHT
76010-7322	68	30.35	3.18	DUAL
76010-7332	68	30.35	3.18	UNIVERSAL

UNIVERSAL = NO KEY

SEE SHEET 1 EC NO: UCP2072-1863 DRAWN BY: DRWINKLANG 2011/12/09 CHKD: APPR: MBANAK I S 2011/12/09 REV: C1		QUALITY SYMBOLS ▼=0 ▽=0	GENERAL TOLERANCES (UNLESS SPECIFIED)		DIMENSION STYLE MM ONLY		SCALE 5:1	DESIGN UNITS METRIC	THIRD ANGLE PROJECTION	
			4 PLACES ± --- ± --- 3 PLACES ± 0.13 ± --- 2 PLACES ± 0.13 ± --- 1 PLACE ± 0.25 ± ---		DRAWN BY: KLANG DATE: 22/02/05 CHECKED BY: JSWENSON DATE: 22/02/05 APPROVED BY: MBANAK I S DATE: 22/02/05		TITLE SALES DRAWING IPASS VERTICAL SHELL INTERNAL CABLE		MOLEX INCORPORATED	
			ANGULAR ± 1/2°		MATERIAL NO.		DOCUMENT NO.		SHEET NO.	
			DRAFT WHERE APPLICABLE MUST REMAIN WITHIN DIMENSIONS		SEE CHART		SD-76010-002		4 OF 7	
THIS DRAWING CONTAINS INFORMATION THAT IS PROPRIETARY TO MOLEX INCORPORATED AND SHOULD NOT BE USED WITHOUT WRITTEN PERMISSION										



VERTICAL RETENTION FIT AND THROUGH HOLE SHELL PCB FOOT PRINT

FOR DETAILS ON CONNECTOR
FOOT PRINT, SEE SALES DRAWING
SD-75577-001

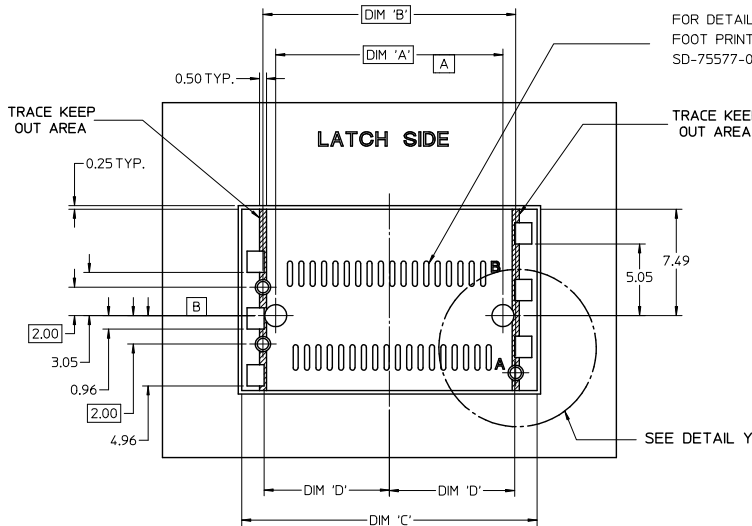


	PEG TO PEG	SHELL PEG TO PEG	SHELL FOOTPRINT WIDTH
CIRCUIT SIZE	DIM 'A'	DIM 'B'	DIM 'C'
26	12.00	13.80	15.80
36	16.00	17.80	19.80
50	21.60	23.40	25.40
68	28.80	30.60	32.60

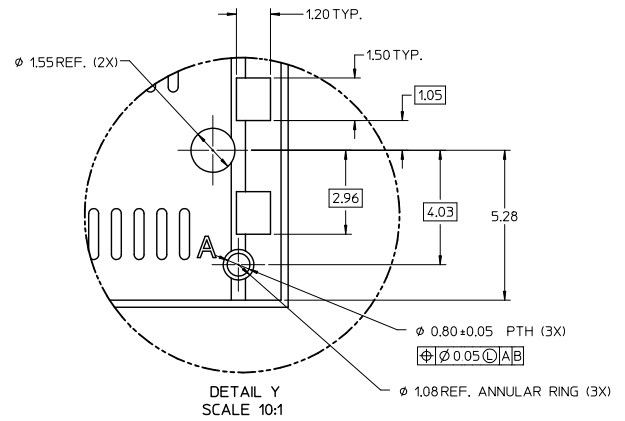
iPass™ IS A TRADEMARK OF MOLEX

SEE SHEET 1 EC NO: UCP2072-1863 DRAWN: KLK CHKD: MBANAKIS APPR: MBANAKIS DATE: 2011/12/09 DESCRIPTION:	QUALITY SYMBOLS ▽=0 ▽=0	GENERAL TOLERANCES (UNLESS SPECIFIED)		DIMENSION STYLE MM ONLY		SCALE 5:1	DESIGN UNITS METRIC	 THIRD ANGLE PROJECTION	
				DRAWN BY KLK	DATE 22/02/05	TITLE SALES DRAWING IPASS VERTICAL SHELL INTERNAL CABLE			
				CHECKED BY JWSNENSON	DATE 22/02/05				
				APPROVED BY	DATE				
				MBANAKIS		22/02/05	 MOLEX INCORPORATED		
				MATERIAL NO.		DOCUMENT NO.	SD-76010-002		
				SEE CHART		SHEET NO. 5 OF 7			
				SIZE C		THIS DRAWING CONTAINS INFORMATION THAT IS PROPRIETARY TO MOLEX INCORPORATED AND SHOULD NOT BE USED WITHOUT WRITTEN PERMISSION			

VERTICAL SMT SHELL PCB FOOT PRINT



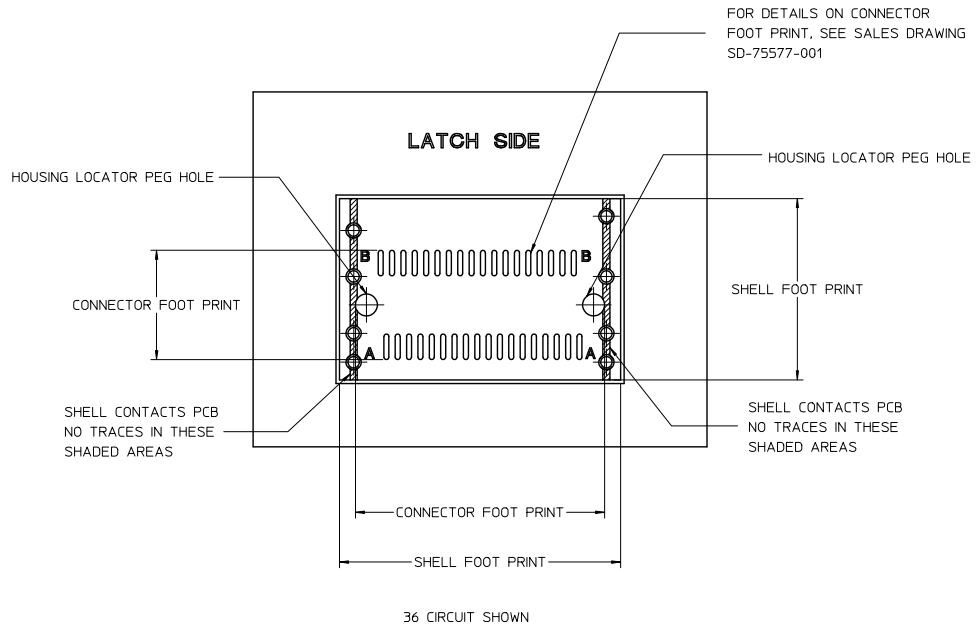
36 CIRCUIT SHOWN



	PEG TO PEG	SHELL PEG TO PEG	SHELL FOOTPRINT WIDTH CENTERLINE TO PAD EDGE	
CIRCUIT SIZE	DIM 'A'	DIM 'B'	DIM 'C'	DIM 'D'
26	12.00	13.80	16.80	6.825
36	16.00	17.80	20.80	8.825
50	21.60	23.40	26.40	11.625
68	28.80	30.60	33.60	15.225

SEE SHEET 1 EC NO: UCP2012-1863 DRAWN BY: DRINKLANG CHKD: APPR: MBANKI S 2011/12/09 DESCRIPTION:	QUALITY SYMBOLS	GENERAL TOLERANCES (UNLESS SPECIFIED)		DIMENSION STYLE MM ONLY		SCALE 5:1	DESIGN UNITS METRIC	THIRD ANGLE PROJECTION		
	▽=0	mm INCH		DRAWN BY DATE		TITLE				
	▽=0	4 PLACES ± 0.13 ± 0.005		KLANK 22/02/05		SALES DRAWING				
		3 PLACES ± 0.13 ± 0.005		CHECKED BY DATE		IPASS VERTICAL SHELL				
		2 PLACES ± 0.13 ± 0.005		JSWENSON 22/02/05		INTERNAL CABLE				
		1 PLACE ± 0.25 ± 0.010		APPROVED BY DATE		MOLEX INCORPORATED				
		ANGULAR ± 1/2°		MBANKI S 22/02/05		molex				
		DRAFT WHERE APPLICABLE MUST REMAIN WITHIN DIMENSIONS		MATERIAL NO. SEE CHART		DOCUMENT NO. SD-76010-002		SHEET NO. 6 OF 7		
				SIZE		THIS DRAWING CONTAINS INFORMATION THAT IS PROPRIETARY TO MOLEX INCORPORATED AND SHOULD NOT BE USED WITHOUT WRITTEN PERMISSION				

VERTICAL SHELL PCB FOOT PRINT DESCRIPTIONS



iPass™ IS A TRADEMARK OF MOLEX

SEE SHEET 1 EC NO: UCP2072-1863 DRAWN BY: DRWINKLANG CHKD: MBANAKIS C1	21/12/09	2011/12/09	QUALITY SYMBOLS	GENERAL TOLERANCES (UNLESS SPECIFIED)		DIMENSION STYLE MM ONLY		SCALE 5:1	DESIGN UNITS METRIC	THIRD ANGLE PROJECTION	
	▽=0			mm INCH		DRAWN BY DATE		TITLE			
	▽=0			4 PLACES ±.--- ±.---		KLANG 22/02/05		SALES DRAWING			
				3 PLACES ±.13 ±.---		CHECKED BY DATE		IPASS VERTICAL SHELL			
				2 PLACES ±.13 ±.---		JSWENSON 22/02/05		INTERNAL CABLE			
				1 PLACE ±.25 ±.---		APPROVED BY DATE		MOLEX MOLEX INCORPORATED			
				ANGULAR ±1/2°		MBANAKIS 22/02/05		DOCUMENT NO.		SHEET NO.	
				DRAFT WHERE APPLICABLE		SEE CHART		SD-76010-002		7 OF 7	
				MUST REMAIN WITHIN DIMENSIONS		SIZE		THIS DRAWING CONTAINS INFORMATION THAT IS PROPRIETARY TO MOLEX INCORPORATED AND SHOULD NOT BE USED WITHOUT WRITTEN PERMISSION			
						C					