

## Excellent Integrated System Limited

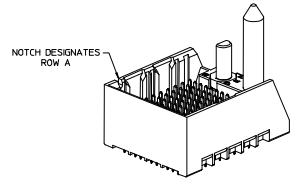
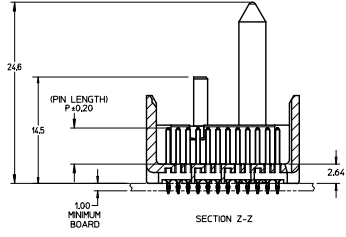
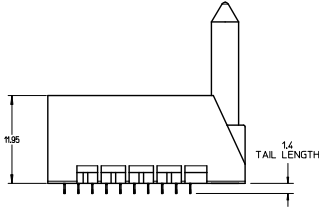
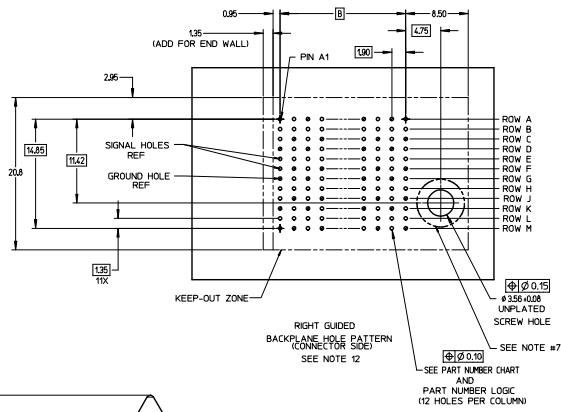
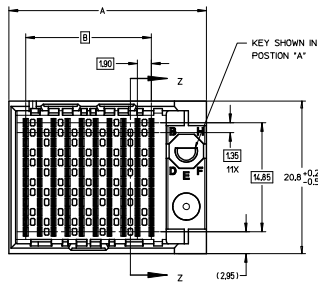
Stocking Distributor

Click to view price, real time Inventory, Delivery & Lifecycle Information:

[Molex Connector Corporation](#)  
[0761555107](#)

For any questions, you can email us directly:

[sales@integrated-circuit.com](mailto:sales@integrated-circuit.com)

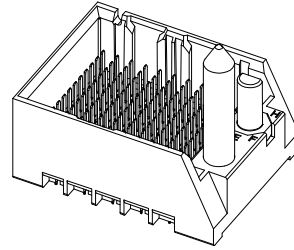


- NOTES:
1. MATERIALS: HOUSING - LIQUID CRYSTAL POLYMER (LCP) GLASS-FILLED, UL94V-0  
TERMINALS - HIGH PERFORMANCE COPPER ALLOY  
NICKEL OVERALL.
  2. FINISH: 30μ MN GOLD IN CONTACT AREA, SELECTIVE TN ON PCB TAILS.
  3. REFER TO MOLEX PRODUCT SPECIFICATION PS-76060-999 FOR PERFORMANCE SPECIFICATIONS AND ADDITIONAL PCB INFORMATION.
  4. THIS PART CONFORMS TO CLASS B REQUIREMENTS OF MOLEX COSMETIC SPEC PS-45499-002.
  5. PACKAGE PER PK-70873-757.
  6. SEE SHEETS 2 & 3 FOR PART NUMBERS AND BOARD RELATIONSHIPS.
  7. FOR GROUNDED GUIDE PINS USE DIA. 3.56 +/- 0.08 (PTH) DIA. 3.66 (DRILL) AND DIA. 6.5 (PAD).
  8. MATES WITH IMPACT DC SERIES NO. 76160.
  9. KEEP OUT ZONE FOR BP HOUSING LENGTH INCLUDES AN ADDITIONAL 10MM TO ACCOMMODATE FOR SPACE REQUIRED BY DC FRONT HOUSING.
  10. REFER TO MOLEX PCB ROUTING GUIDE AS-76060-990 FOR ANTI PAD AND ROUTING RECOMMENDATIONS.
  11. CONNECTORS SUPPLIED WITH A 2-56 UNC-2A SCREW.
  12. THESE DIMENSIONS REPRESENT THE AREA NEEDED TO ACCOMMODATE CONNECTOR INSERTION AND REPAIR ON THE PC BOARD. THIS IS REFERRED TO AS THE "CONNECTOR KEEP OUT ZONE" AND DOES NOT REPRESENT THE ACTUAL PERIMETER OF THE CONNECTOR. WHEN LAYING OUT A PC BOARD FOR CONNECTORS STACKED TOGETHER, USE A 10mm PROGRESSION.

|   |  |   |  |   |   |   |
|---|--|---|--|---|---|---|
| CONVERT TO LEAD-FREE<br>EC NS: UPE2003-2078<br>DRAWN: IBARRA 2007/11/26<br>CHECKED: B. NGUYEN 2007/12/18<br>APPROVED: J. NGUYEN 2007/12/21<br>(REV) | QUALITY SYMBOLS<br>∇=0<br>∇=0<br>∇=0                           | GENERAL TOLERANCES (UNLESS SPECIFIED)<br>mm INCH<br>4 PLACES ±.05 ±.002<br>3 PLACES ±.03 ±.001<br>2 PLACES ±.02 ±.001<br>1 PLACE ±.01 ±.001<br>0 PLACE ±.00 ±.000 | DIMENSION STYLE<br>MM ONLY<br>DRAWN BY MSANDBERG 2007/11/26<br>CHECKED BY JLAURX 2007/11/26<br>APPROVED BY JLAURX 2010/10/15 | SCALE 4:1<br>DESIGN UNITS METRIC<br>THIRD ANGLE PROJECTION  | TITLE<br>IMPACT 4 PAIR HEADER<br>RIGHT GUIDED ASSEMBLY<br>SALES DRAWING<br><b>molex</b> | DOCUMENT NO. SD-76155-003<br>SHEET NO. 1 OF 3 |
|   | DRAFT WHERE APPLICABLE MUST REMAIN WITHIN DIMENSIONS           |   | WATERMARK NO. SEE TABLE  | THIS DRAWING CONTAINS INFORMATION THAT IS PROPRIETARY TO MOLEX INCORPORATED AND SHOULD NOT BE USED WITHOUT WRITTEN PERMISSION |   |   |
|   | INCORPORATED AND SHOULD NOT BE USED WITHOUT WRITTEN PERMISSION |   |  |   |   |   |

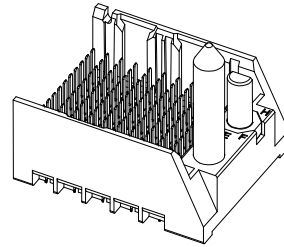
PART NUMBER TABLE

| MATERIAL NUMBER | # OF COLUMNS | # OF DIFF PAIR | DIM 'A' | DIM 'B' | GUIDE RIGHT<br>END WALL<br>OPTION |
|-----------------|--------------|----------------|---------|---------|-----------------------------------|
| 76155-*3**      | 6            | 24             | 19.3    | 9.50    |                                   |
| 76155-*8**      | 8            | 32             | 23.1    | 13.30   |                                   |
| 76155-*1**      | 10           | 40             | 26.9    | 17.10   |                                   |
| 76155-*6**      | 16           | 64             | 38.3    | 28.50   |                                   |



GUIDE RIGHT  
END WALL  
OPTION

| MATERIAL NUMBER | # OF COLUMNS | # OF DIFF PAIR | DIM 'A' | DIM 'B' | GUIDE RIGHT<br>OPEN WALL<br>OPTION |
|-----------------|--------------|----------------|---------|---------|------------------------------------|
| 76155-*3**      | 6            | 24             | 17.9    | 9.50    |                                    |
| 76155-*8**      | 8            | 32             | 21.7    | 13.30   |                                    |
| 76155-*1**      | 10           | 40             | 25.5    | 17.10   |                                    |
| 76155-*6**      | 16           | 64             | 36.9    | 28.50   |                                    |



GUIDE RIGHT  
OPEN WALL  
OPTION

PART NUMBER LOGIC

76155-\*\*\*\*

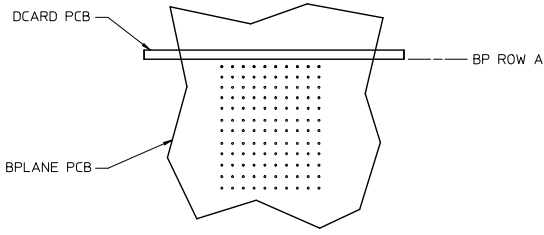
MODULE TYPE  
5 = GUIDE RIGHT, TIN  
9 = GUIDE RIGHT END WALL, TIN

# OF COLUMNS  
1 = 10 COL  
3 = 6 COL  
6 = 16 COL  
8 = 8 COL

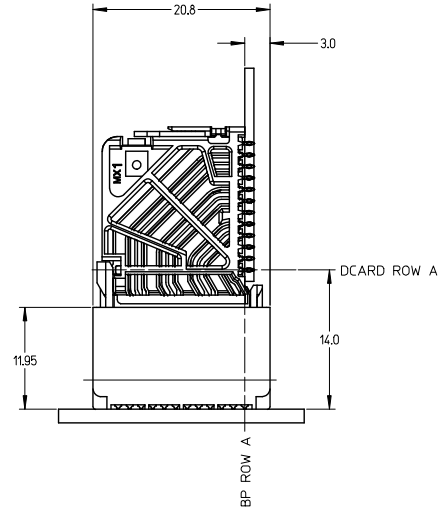
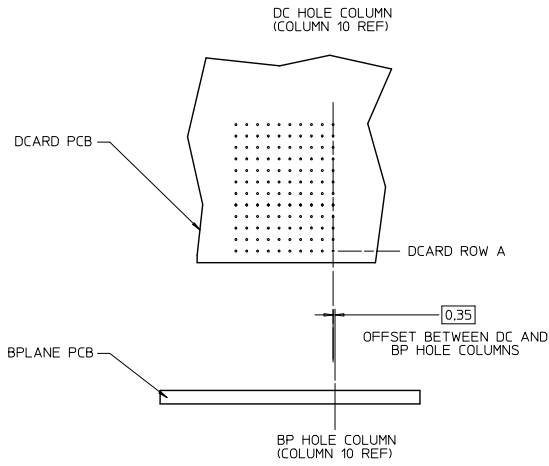
PIN LENGTH (P)  
3 = 4.50 (SHORT COMPLIANT, 0.46±0.05 PTH)  
4 = 4.90 (SHORT COMPLIANT, 0.46±0.05 PTH)  
5 = 5.50 (SHORT COMPLIANT, 0.46±0.05 PTH)  
6 = 4.50 (MICRO COMPLIANT, 0.39±0.05 PTH)  
7 = 4.90 (MICRO COMPLIANT, 0.39±0.05 PTH)  
8 = 5.50 (MICRO COMPLIANT, 0.39±0.05 PTH)

KEY ORIENTATION  
0 = NO KEY  
1 = A  
2 = B  
3 = C  
4 = D  
5 = E  
6 = F  
7 = G  
8 = H

|   |                                      |  |  |                                       |  |   |                        |                        |  |
|---|--------------------------------------|--|--|---------------------------------------|--|---|------------------------|------------------------|--|
| SEE SHEET 1<br>EC NO: UCPE2013-2078<br>DRAWN BY: IBARRA 2012/11/28<br>CHKD BY: NIGRAM 2012/12/18<br>APPR: MILLER 2012/12/13   | QUALITY SYMBOLS<br>∇=0<br>∇=0<br>∇=0 | GENERAL TOLERANCES (UNLESS SPECIFIED)                |  | DIMENSION STYLE<br>MM ONLY            |  | SCALE<br>3:1  | DESIGN UNITS<br>METRIC | THIRD ANGLE PROJECTION |  |
|   |                                      | 4 PLACES ± --- ± ---                                 |  | DRAWN BY DATE<br>MSANDBERG 2007/19/07 |  | TITLE<br>IMPACT 4 PAIR HEADER<br>RIGHT GUIDED ASSEMBLY<br>SALES DRAWING |                        |                        |  |
|   |                                      | 3 PLACES ± --- ± ---                                 |  | CHECKED BY DATE<br>JLAURX 2007/19/07  |  |   |                        |                        |  |
|   |                                      | 2 PLACES ± 0.13 ± ---                                |  | APPROVED BY DATE<br>JLAURX 2010/10/15 |  |   |                        |                        |  |
| 1 PLACE ± 0.25 ± ---  |                                      | ANGULAR ± 1/2°                                       |  | MATERIAL NO.                          |  | DOCUMENT NO.  |                        | SHEET NO.              |  |
| 0 PLACE ± ±   |                                      | DRAFT WHERE APPLICABLE MUST REMAIN WITHIN DIMENSIONS |  | SEE TABLE                             |  | SD-76155-003  |                        | 2 OF 3                 |  |
| THIS DRAWING CONTAINS INFORMATION THAT IS PROPRIETARY TO MOLEX INCORPORATED AND SHOULD NOT BE USED WITHOUT WRITTEN PERMISSION |                                      |  |  |                                       |  |   |                        |                        |  |



IMPACT 4 PAIR  
BOARD RELATIONSHIPS



|   |   |  |   |                            |                    |   |                        |  |
|---|---|--|---|----------------------------|--------------------|---|------------------------|--|
| SEE SHEET 1<br>EC NO: UCF2019-2078<br>DRAWN BY: TIBARRA 2012/11/28<br>CHKD: BINGHAM 2012/12/18<br>APPR: MILLER 2012/12/31 | QUALITY SYMBOLS<br>∇=0<br>∇=0<br>∇=0  | GENERAL TOLERANCES (UNLESS SPECIFIED)  |   | DIMENSION STYLE<br>MM ONLY |                    | SCALE<br>2:1  | DESIGN UNITS<br>METRIC | THIRD ANGLE PROJECTION   |
|   |   | 4 PLACES ± --- ± ---<br>3 PLACES ± --- ± ---<br>2 PLACES ± 0.13 ± ---<br>1 PLACE ± 0.25 ± ---<br>0 PLACE ± ± | mm INCH<br>± --- ± ---<br>± --- ± ---<br>± --- ± ---<br>± --- ± --- | DRAWN BY<br>MSANDBERG      | DATE<br>2007/19/07 | TITLE<br>IMPACT 4 PAIR HEADER<br>RIGHT GUIDED ASSEMBLY<br>SALES DRAWING |                        | molex  |
| REV<br>G  | DESCRIPTION<br>IMPACT 4 PAIR HEADER<br>RIGHT GUIDED ASSEMBLY<br>SALES DRAWING | ANGULAR ±1/2°<br>DRAFT WHERE APPLICABLE<br>MUST REMAIN<br>WITHIN DIMENSIONS                                  |   | MATERIAL NO.<br>SEE TABLE  |                    | DOCUMENT NO.<br>SD-76155-003  | SHEET NO.<br>3 OF 3    | THIS DRAWING CONTAINS INFORMATION THAT IS PROPRIETARY TO MOLEX<br>INCORPORATED AND SHOULD NOT BE USED WITHOUT WRITTEN PERMISSION |