

## Excellent Integrated System Limited

Stocking Distributor

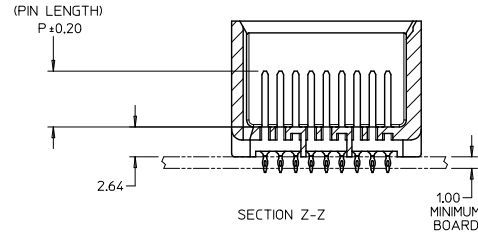
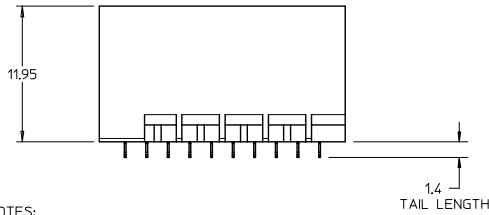
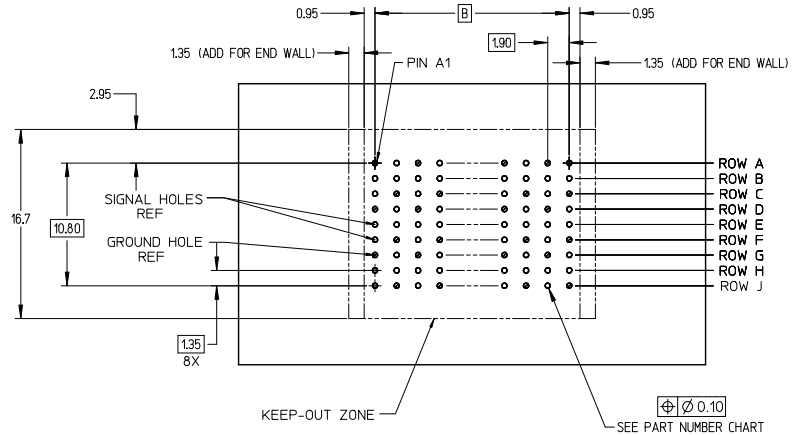
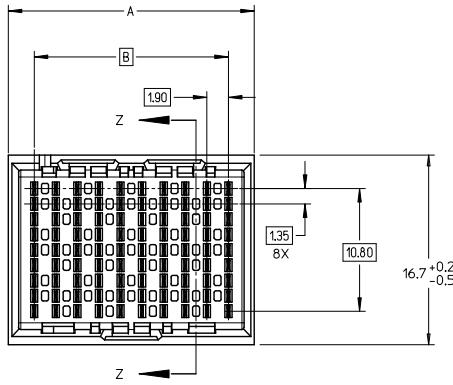
Click to view price, real time Inventory, Delivery & Lifecycle Information:

[Molex Connector Corporation](#)  
[0761650826](#)

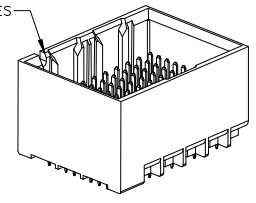
For any questions, you can email us directly:

[sales@integrated-circuit.com](mailto:sales@integrated-circuit.com)

13 12 11 10 9 8 7 6 5 4 3 2 1



UNGUIDED BACKPLANE HOLE PATTERN (CONNECTOR SIDE) SEE NOTE 9



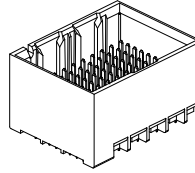
- NOTES:
- MATERIALS: HOUSING - LIQUID CRYSTAL POLYMER (LCP)  
GLASS-FILLED, UL94V-0  
TERMINALS - HIGH PERFORMANCE COPPER ALLOY
  - FINISH: 30μ MIN GOLD IN CONTACT AREA.  
SELECTIVE TIN ON PCB TAILS.  
NICKEL OVERALL.
  - REFER TO MOLEX PRODUCT SPECIFICATION PS-76060-999 FOR PERFORMANCE SPECIFICATIONS AND ADDITIONAL PCB INFORMATION.
  - THIS PART CONFORMS TO CLASS B REQUIREMENTS OF MOLEX COSMETIC SPEC PS-45499-002.
  - PARTS PACKAGED PER PK-70873-7700.
  - SEE SHEETS 2 & 3 FOR PART NUMBERS AND BOARD RELATIONSHIPS.
  - MATES WITH IMPACT DC SERIES NO. 76170.
  - REFER TO MOLEX PCB ROUTING GUIDE AS-76060-990 FOR ANTIPAD AND ROUTING RECOMMENDATIONS.
  - \*THESE DIMENSIONS REPRESENT THE AREA NEEDED TO ACCOMMODATE CONNECTOR INSERTION AND REPAIR ON THE PC BOARD. THIS IS REFERRED TO AS THE "CONNECTOR KEEP OUT ZONE" AND DOES NOT REPRESENT THE ACTUAL PERIMETER OF THE CONNECTOR. WHEN LAYING OUT A PC BOARD FOR CONNECTORS STACKED TOGETHER, USE A 1.9mm PROGRESSION.\*

|  |                     |  |                       |   |                    |  |                                     |                            |  |
|--|---------------------|--|-----------------------|---|--------------------|--|-------------------------------------|----------------------------|--|
| CONVERT TO LEAD-FREE<br>EC NO: UCP2015-2078<br>DRAWN: IBARRA 2017/11/28<br>CHKD: BINGHAM 2017/12/18<br>APPR: MILLER 2017/12/31 | QUALITY SYMBOLS<br> | GENERAL TOLERANCES (UNLESS SPECIFIED)                |                       | DIMENSION STYLE<br><b>MM ONLY</b>   |                    | SCALE<br><b>4:1</b>  | DESIGN UNITS<br><b>METRIC</b>       | THIRD ANGLE PROJECTION     |  |
|  |                     | 4 PLACES ± --- ± ---                                 | 3 PLACES ± --- ± ---  | DRAWN BY<br>MSANDBERG   | DATE<br>2007/06/18 | TITLE<br><b>IMPACT BP 3 PAIR UNGUIDED ASSEMBLY SALES DRAWING</b> |                                     |                            |  |
|  |                     | 3 PLACES ± --- ± ---                                 | 2 PLACES ± 0.13 ± --- | CHECKED BY<br>JLAURX  | DATE<br>2007/06/18 | molex  |                                     |                            |  |
|  |                     | 1 PLACE ± 0.25 ± ---                                 | 0 PLACE ± ± ---       | APPROVED BY<br>JLAURX   | DATE<br>2010/10/15 | MATERIAL NO.<br><b>SEE TABLE</b>                                 | DOCUMENT NO.<br><b>SD-76165-001</b> | SHEET NO.<br><b>1 OF 3</b> |  |
| ANGLULAR ±1/2°   |                     | DRAFT WHERE APPLICABLE MUST REMAIN WITHIN DIMENSIONS |                       | THIS DRAWING CONTAINS INFORMATION THAT IS PROPRIETARY TO MOLEX INCORPORATED AND SHOULD NOT BE USED WITHOUT WRITTEN PERMISSION |                    |  |                                     |                            |  |

12 11 10 9 8 7 6 5 4 3 2 1

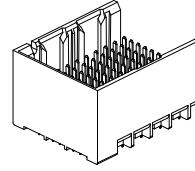
PART NUMBER TABLE

| MATERIAL NUMBER    | # OF COLUMNS | # OF DIFF PAIR | DIM 'A' | DIM 'B' | DUAL END WALL OPTION |
|--------------------|--------------|----------------|---------|---------|----------------------|
| 76165- <b>*32*</b> | 6            | 18             | 14.1    | 9.50    |                      |
| 76165- <b>*82*</b> | 8            | 24             | 17.9    | 13.30   |                      |
| 76165- <b>*12*</b> | 10           | 30             | 21.7    | 17.10   |                      |
| 76165- <b>*62*</b> | 16           | 48             | 33.1    | 28.50   |                      |



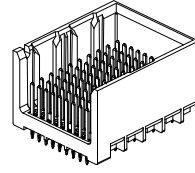
DUAL END WALL OPTION

| MATERIAL NUMBER    | # OF COLUMNS | # OF DIFF PAIR | DIM 'A' | DIM 'B' | LEFT END WALL OPTION |
|--------------------|--------------|----------------|---------|---------|----------------------|
| 76165- <b>*31*</b> | 6            | 18             | 12.7    | 9.50    |                      |
| 76165- <b>*81*</b> | 8            | 24             | 16.5    | 13.30   |                      |
| 76165- <b>*11*</b> | 10           | 30             | 20.3    | 17.10   |                      |
| 76165- <b>*61*</b> | 16           | 48             | 31.7    | 28.50   |                      |



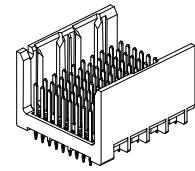
LEFT END WALL OPTION

| MATERIAL NUMBER    | # OF COLUMNS | # OF DIFF PAIR | DIM 'A' | DIM 'B' | RIGHT END WALL OPTION |
|--------------------|--------------|----------------|---------|---------|-----------------------|
| 76165- <b>*33*</b> | 6            | 18             | 12.7    | 9.50    |                       |
| 76165- <b>*83*</b> | 8            | 24             | 16.5    | 13.30   |                       |
| 76165- <b>*13*</b> | 10           | 30             | 20.3    | 17.10   |                       |
| 76165- <b>*63*</b> | 16           | 48             | 31.7    | 28.50   |                       |



RIGHT END WALL OPTION

| MATERIAL NUMBER    | # OF COLUMNS | # OF DIFF PAIR | DIM 'A' | DIM 'B' | OPEN WALL OPTION |
|--------------------|--------------|----------------|---------|---------|------------------|
| 76165- <b>*30*</b> | 6            | 18             | 11.3    | 9.50    |                  |
| 76165- <b>*80*</b> | 8            | 24             | 15.1    | 13.30   |                  |
| 76165- <b>*10*</b> | 10           | 30             | 18.9    | 17.10   |                  |
| 76165- <b>*60*</b> | 16           | 48             | 30.4    | 28.50   |                  |



OPEN WALL OPTION

PART NUMBER LOGIC

76165-\*\*\*\*

MODULE TYPE  
1 = UNGUIDED, TIN

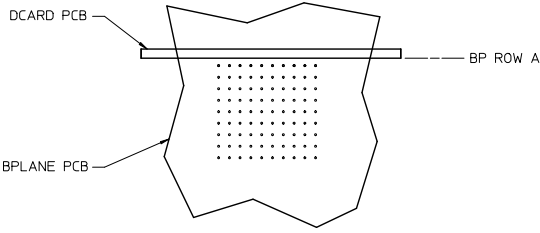
PIN LENGTH (P)

- 3 = 4.50 (SHORT COMPLIANT, 0.46±0.05 PTH)
- 4 = 4.90 (SHORT COMPLIANT, 0.46±0.05 PTH)
- 5 = 5.50 (SHORT COMPLIANT, 0.46±0.05 PTH)
- 6 = 4.50 (MICRO COMPLIANT, 0.39±0.05 PTH)
- 7 = 4.90 (MICRO COMPLIANT, 0.39±0.05 PTH)
- 8 = 5.50 (MICRO COMPLIANT, 0.39±0.05 PTH)

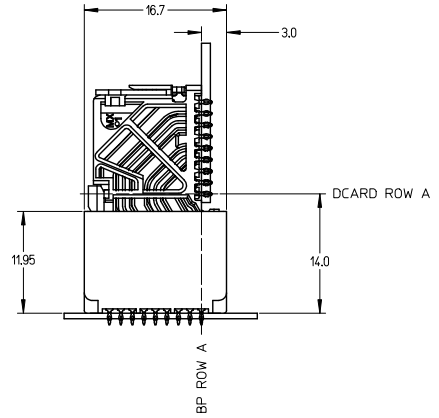
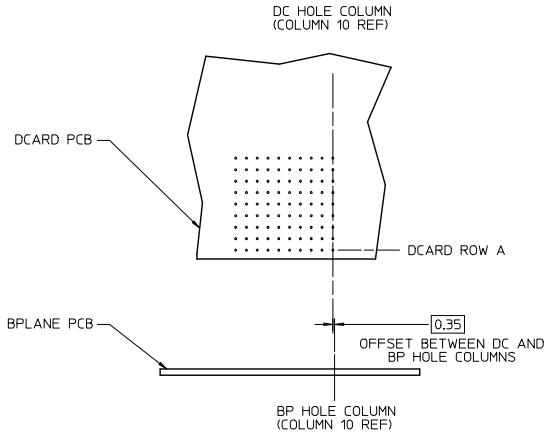
- END WALL OPTIONS
- 0 = OPEN ENDS
  - 1 = LEFT END WALL
  - 2 = DUAL END WALL
  - 3 = RIGHT END WALL

- # OF COLUMNS
- 1 = 10 COL
  - 3 = 6 COL
  - 6 = 16 COL
  - 8 = 8 COL

|  |                                      |                                       |    |                            |             |   |  |                        |  |
|--|--------------------------------------|---------------------------------------|----|----------------------------|-------------|---|--|------------------------|--|
| SEE SHEET 1<br>EC NO: UCP2013-2078<br>DRAWN BY: BARBA<br>CHKD: B. INGHAM<br>APPR: MILLER<br>2012/11/28<br>2012/12/18<br>2012/12/31 | QUALITY SYMBOLS<br>∇=0<br>∇=0<br>∇=0 | GENERAL TOLERANCES (UNLESS SPECIFIED) |    | DIMENSION STYLE<br>MM ONLY |             | SCALE<br>2.5:1  | DESIGN UNITS<br>METRIC   | THIRD ANGLE PROJECTION |  |
|  |                                      | 4 PLACES ± --- ± ---                  | mm | INCH                       | DRAWN BY    | DATE  | TITLE<br>IMPACT BP 3 PAIR UNGUIDED ASSEMBLY SALES DRAWING<br><b>molex</b><br>DOCUMENT NO. SD-76165-001<br>SHEET NO. 2 OF 3 |                        |  |
|  |                                      | 3 PLACES ± --- ± ---                  |    |                            | CHECKED BY  | DATE  |  |                        |  |
|  |                                      | 2 PLACES ± 0.13 ± ---                 |    |                            | APPROVED BY | DATE  |  |                        |  |
| 1 PLACE ± 0.25 ± ---   |                                      |                                       |    |                            |             |   |  |                        |  |
| 0 PLACE ± ±  |                                      |                                       |    |                            |             |   |  |                        |  |
|  |                                      | ANGULAR ± 1/2°                        |    | MATERIAL NO.               |             | DOCUMENT NO.  |  | SHEET NO.              |  |
| DRAFT WHERE APPLICABLE MUST REMAIN WITHIN DIMENSIONS   |                                      | SEE TABLE                             |    | SIZE C                     |             | THIS DRAWING CONTAINS INFORMATION THAT IS PROPRIETARY TO MOLEX INCORPORATED AND SHOULD NOT BE USED WITHOUT WRITTEN PERMISSION |  |                        |  |



IMPACT 3 PAIR  
BOARD RELATIONSHIPS



|   |                                      |  |             |                            |              |              |  |                        |  |  |
|---|--------------------------------------|--|-------------|----------------------------|--------------|--------------|--|------------------------|--|--|
| SEE SHEET 1<br>EC NO: UCP2015-2078<br>DRAWN BY: TIBARRA 2012/11/28<br>CHKD: B INGHAM 2012/12/18<br>APPR: SMILLER 2012/12/21   | QUALITY SYMBOLS<br>∇=0<br>∇=0<br>∇=0 | GENERAL TOLERANCES (UNLESS SPECIFIED)                |             | DIMENSION STYLE<br>MM ONLY |              | SCALE<br>3:1 | DESIGN UNITS<br>METRIC                                 | THIRD ANGLE PROJECTION |  |  |
|   |                                      |  | mm          | INCH                       | DRAWN BY     | DATE         | TITLE  |                        |  |  |
|   |                                      | 4 PLACES   | ±---        | ±---                       | MSANDBERG    | 2007/06/18   | IMPACT BP 3 PAIR<br>UNGUIDED ASSEMBLY<br>SALES DRAWING |                        |  |  |
|   |                                      | 3 PLACES   | ±---        | ±---                       | CHECKED BY   | DATE         |  |                        |  |  |
| 2 PLACES  | ±0.13                                | ±---   | JLAURX      | 2007/06/18                 |              |              |  |                        |  |  |
| 1 PLACE   | ±0.25                                | ±---   | APPROVED BY | DATE                       |              |              |  |                        |  |  |
| 0 PLACE   | ±                                    | ±  | JLAURX      | 2010/10/15                 | MATERIAL NO. | DOCUMENT NO. | SHEET NO.  |                        |  |  |
| ANGULAR ±1/2°   |                                      | DRAFT WHERE APPLICABLE MUST REMAIN WITHIN DIMENSIONS |             | SEE TABLE                  |              | SD-76165-001 |  | 3 OF 3                 |  |  |
| THIS DRAWING CONTAINS INFORMATION THAT IS PROPRIETARY TO MOLEX INCORPORATED AND SHOULD NOT BE USED WITHOUT WRITTEN PERMISSION |                                      |  |             |                            |              |              |  |                        |  |  |